

VALLCO TOWN CENTER

OWNER: VALLCO PROPERTY GROUP LLC
 889 PASEO DEL SOL, PALO ALTO, CA 94304
 T: 650-241-1100

ARCHITECTURE: RAFAEL VINELY ARCHITECTS
 20 UNDAUN STREET, NEW YORK, NY 10013
 T: 212-604-0000

ARCHITECTURE: RAFAEL VINELY ARCHITECTS
 1000 N. WOLFE ROAD, CORPUS CHRISTI, TX 78404
 T: 409-407-7000

LANDSCAPE ARCHITECTURE: J.A. HARRINGTON LTD.
 190 S. INDEPENDENCE AVE., SUITE 1100, PHILADELPHIA, PA 19106
 T: 215-440-0000

CIVIL: SANDOZ CIVIL ENGINEERS SURVEYING PLANNERS INC.
 1700 S. WINCHESTER BLVD., SUITE 200, CARROLLTON, TX 75006
 T: 409-436-0000

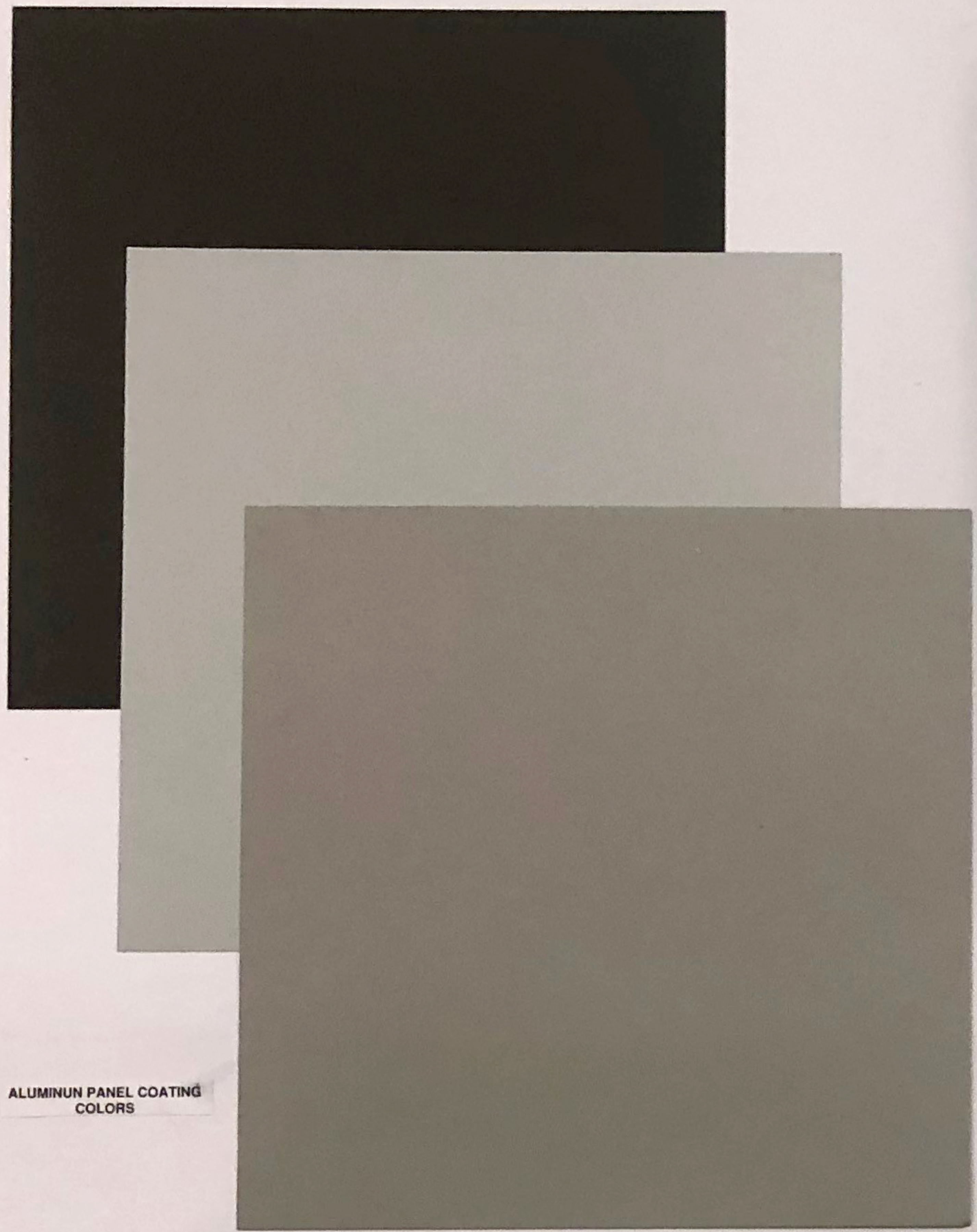
TRANSPORTATION ENGINEERING: AMUP NORTH AMERICA, LTD.
 860 MICHIGAN STREET, SUITE 100, SAN FRANCISCO, CA 94108
 T: 415-367-8445

LIGHTING: ONE LIXX STUDIO
 100 WEST 20TH STREET, 10TH FLOOR, NEW YORK, NY 10011
 T: 877-331-0190

SIGNAGE: EX-IT
 1001 JEN KEN SUITE 1000, PHILADELPHIA, PA 19102
 T: 215-581-1900

PARKING ENGINEERING: WATRO DESIGN INC.
 2008 GATEWAY PLACE, SUITE 300, SAN JOSE, CA 95128
 T: 408-300-7000

WASTE MANAGEMENT: CONSULTA INTERNATIONAL
 100 NORTH BRAND BLVD, STE 710, GLENDALE, CA 91201
 T: 626-441-1700



ALUMINUM PANEL COATING COLORS



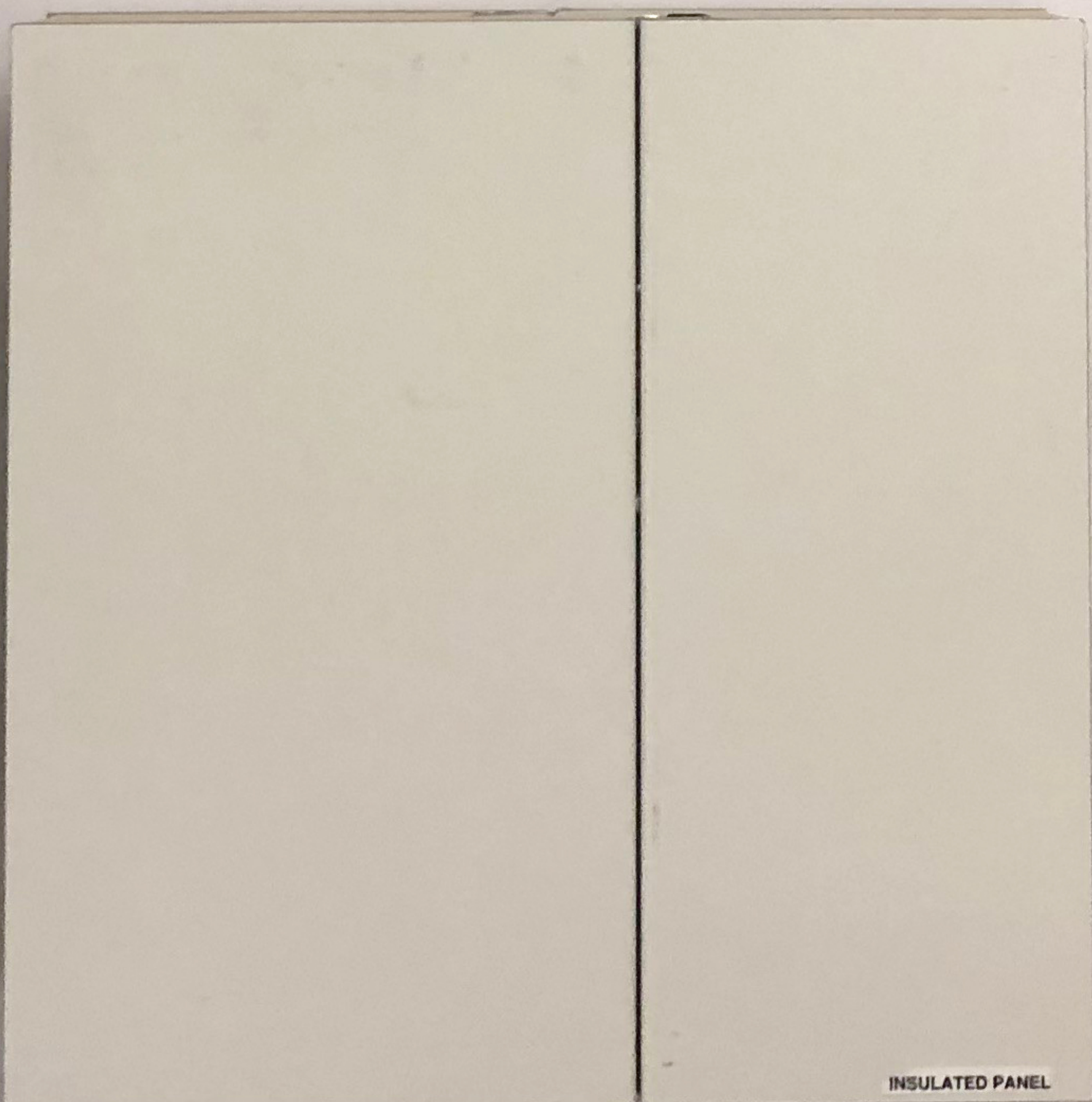
LAMINATED GLASS W/ LOW E COATING



TEMPERED GLASS



ALUMINUM STORM LOUVER



INSULATED PANEL



SIDING CLADDING COMPOSITE BIO BASED WOOD SUBSTITUTE (RESYSTA)



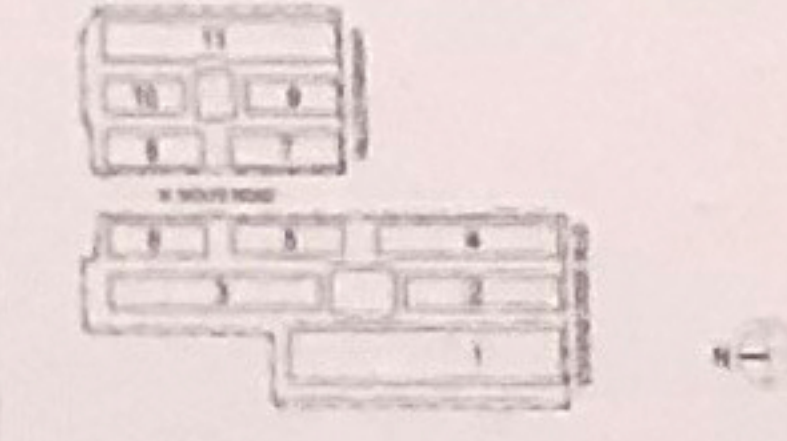
WOOD COLOR SAMPLES

NOT FOR CONSTRUCTION

DISCLAIMER
 THE ARCHITECT / ENGINEER SHALL HAVE NO RESPONSIBILITY FOR ANY LIABILITY, LOSS, COST, DAMAGE OR EXPENSE ARISING FROM OR RELATING TO ANY USE OF THIS DOCUMENT FOR ANY PURPOSE OTHER THAN ITS INTENDED PURPOSE ON THIS PROJECT. THIS DOCUMENT IS TO BE CONSIDERED IN CONJUNCTION WITH ALL RELATED DOCUMENTATION. ANY DISCREPANCIES IDENTIFIED IN THIS DOCUMENT MUST BE REPORTED IMMEDIATELY TO THE ARCHITECT BEFORE PROCEEDING. CONTRACTORS MUST VERIFY ALL DIMENSIONS PRIOR TO PROCEEDING WITH ANY WORK. ONLY POLYMER DIMENSIONS ARE TO BE USED FOR VERIFICATION.

SB-35 DEVELOPMENT APPLICATION

REV.	DESCRIPTION	DATE
REV. 0	SB-35 APPLICATION REVISIONS	08/22/2018



KEY PLAN AND NORTH ARROW
 ARCHITECT'S PROJECT NUMBER: 100011
 PROJECT PHASE: SB-35 DEVELOPMENT APPLICATION

IF THIS DRAWING IS NOT SHOWN IT IS A REDUCED PRINT. REFER TO GRAPHIC SCALE.

SCALE: 1/8" = 1'-0"

MATERIAL BOARD - OFFICE

SHEET TITLE

P-0861.01