



CUPERTINO COMMUNITY HALL

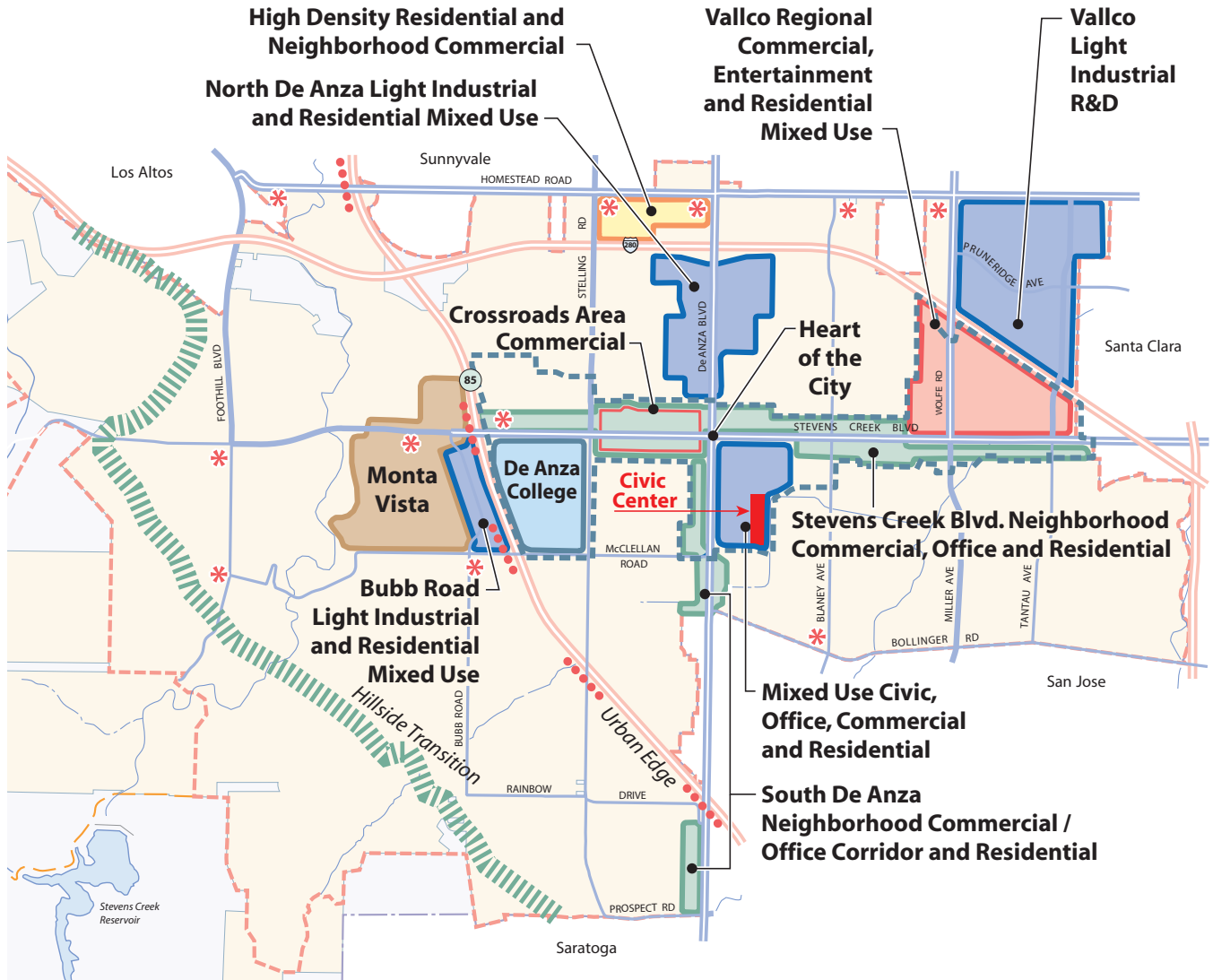
CUPERTINO CIVIC CENTER MASTER PLAN FRAMEWORK



GOALS

1. IMPROVE EASE OF PARKING
2. ENHANCE MOBILITY CHOICES
3. ENHANCE ON-SITE PEDESTRIAN CIRCULATION
4. PROVIDE COMMUNITY-SUPPORTED FACILITIES/PROGRAMS
5. IMPLEMENT WITH MINIMAL COST/COMPLEXITY
6. IMPLEMENT INCREMENTALLY
7. IMPROVE ENERGY EFFICIENCY AND SUSTAINABILITY

Site Context - General Plan



Civic Center

Legend	
 Office / Industrial	 Urban Edge
 High Density Residential	 Hillside Transition
 Educational	 City Boundary
 Neighborhood Commercial Corridors	 Urban Service Area Boundary
 Commercial	 Sphere of Influence
 Monta Vista Area	 Boundary Agreement Line
 Neighborhood Commercial Center	 Unincorporated Areas
 Subject to Heart of the City Specific Plan	 Freeways and Expressways

0 0.5 1 Mile

0 1000 2000 3000 Feet

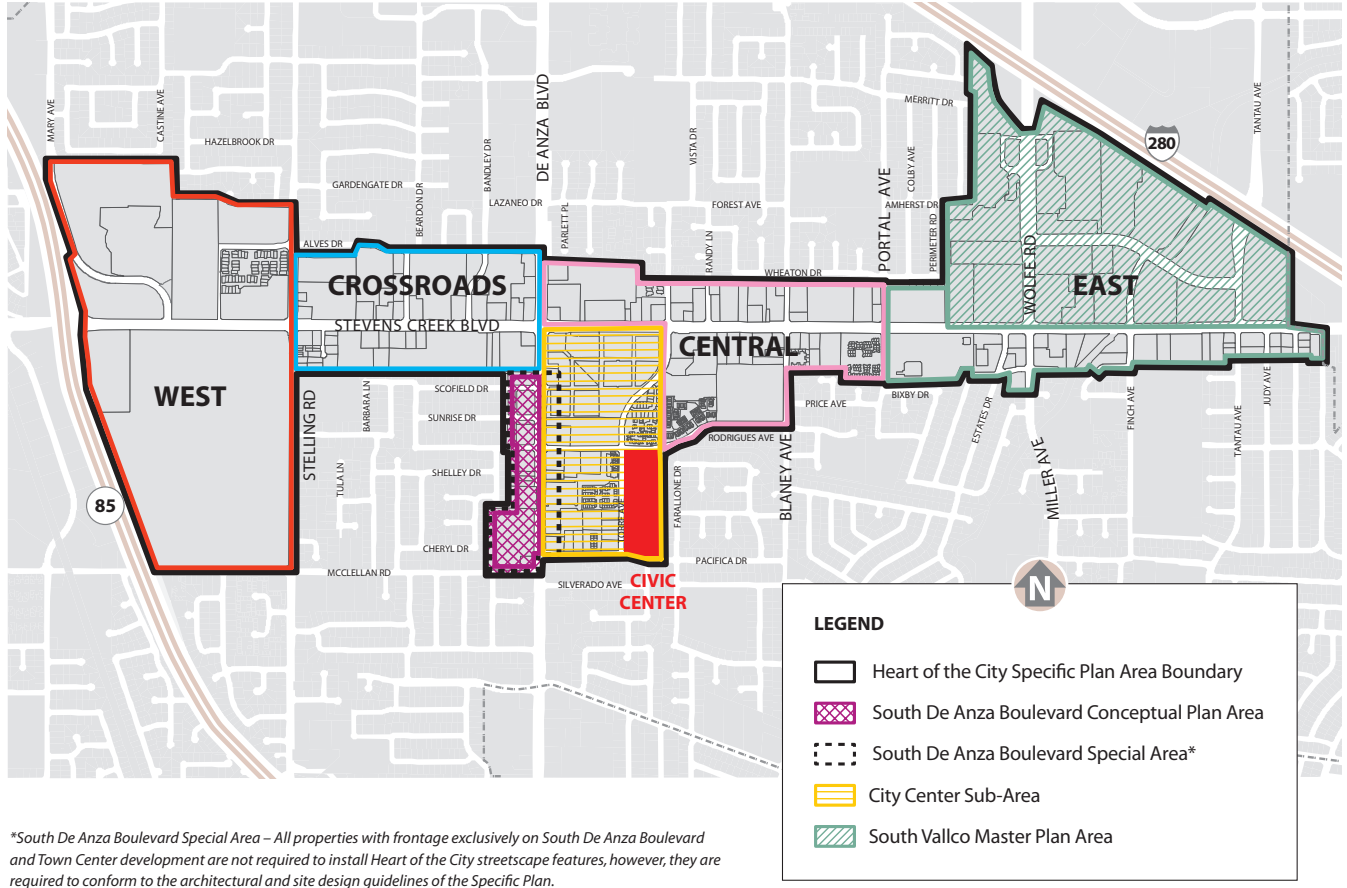
0 500 1000 Meters

Source: City of Cupertino General Plan 2000 - 2020

CUPERTINO CIVIC CENTER MASTER PLAN FRAMEWORK

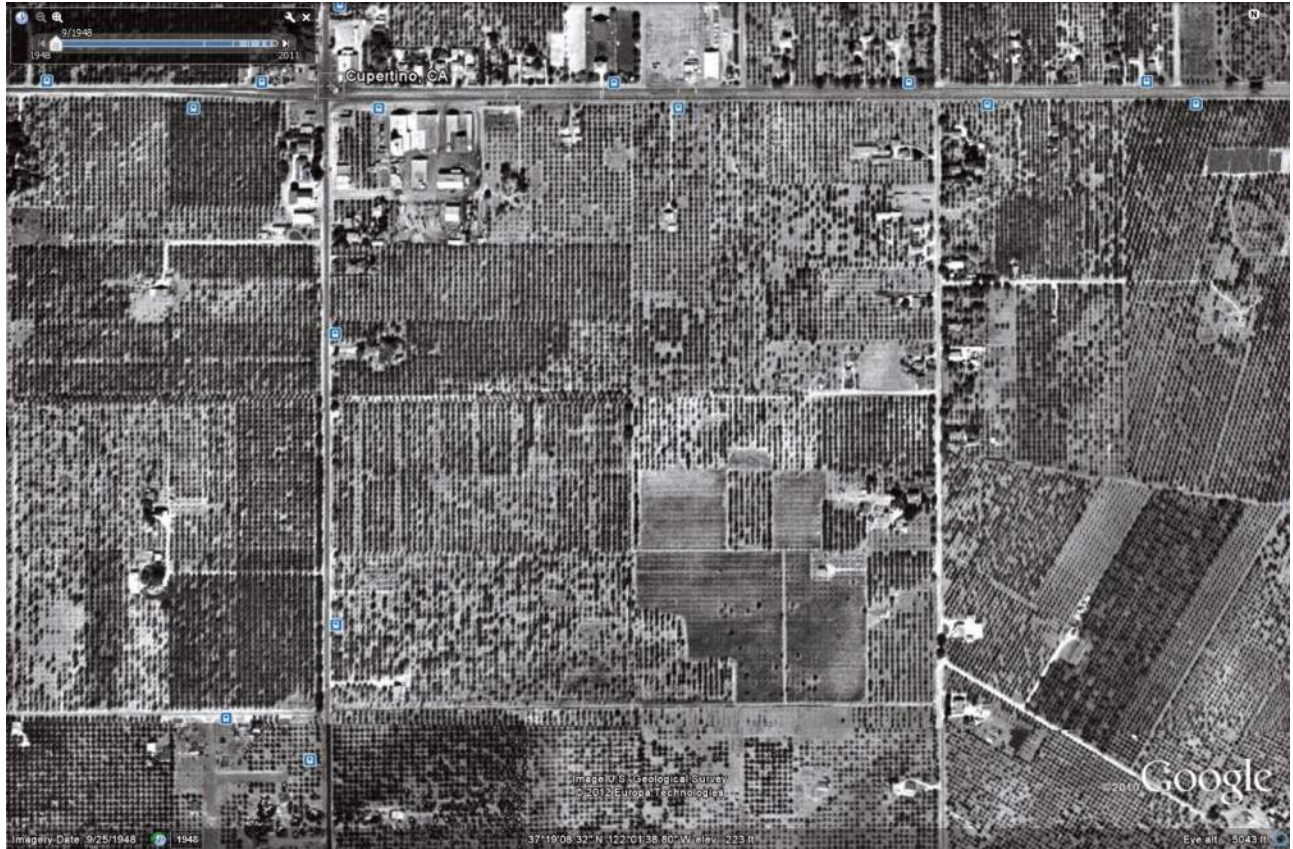


Site Context - Heart of the City Specific Plan



Source: City of Cupertino – Heart of the City Specific Plan

Civic Center Past and Present



CUPERTINO IN 1948

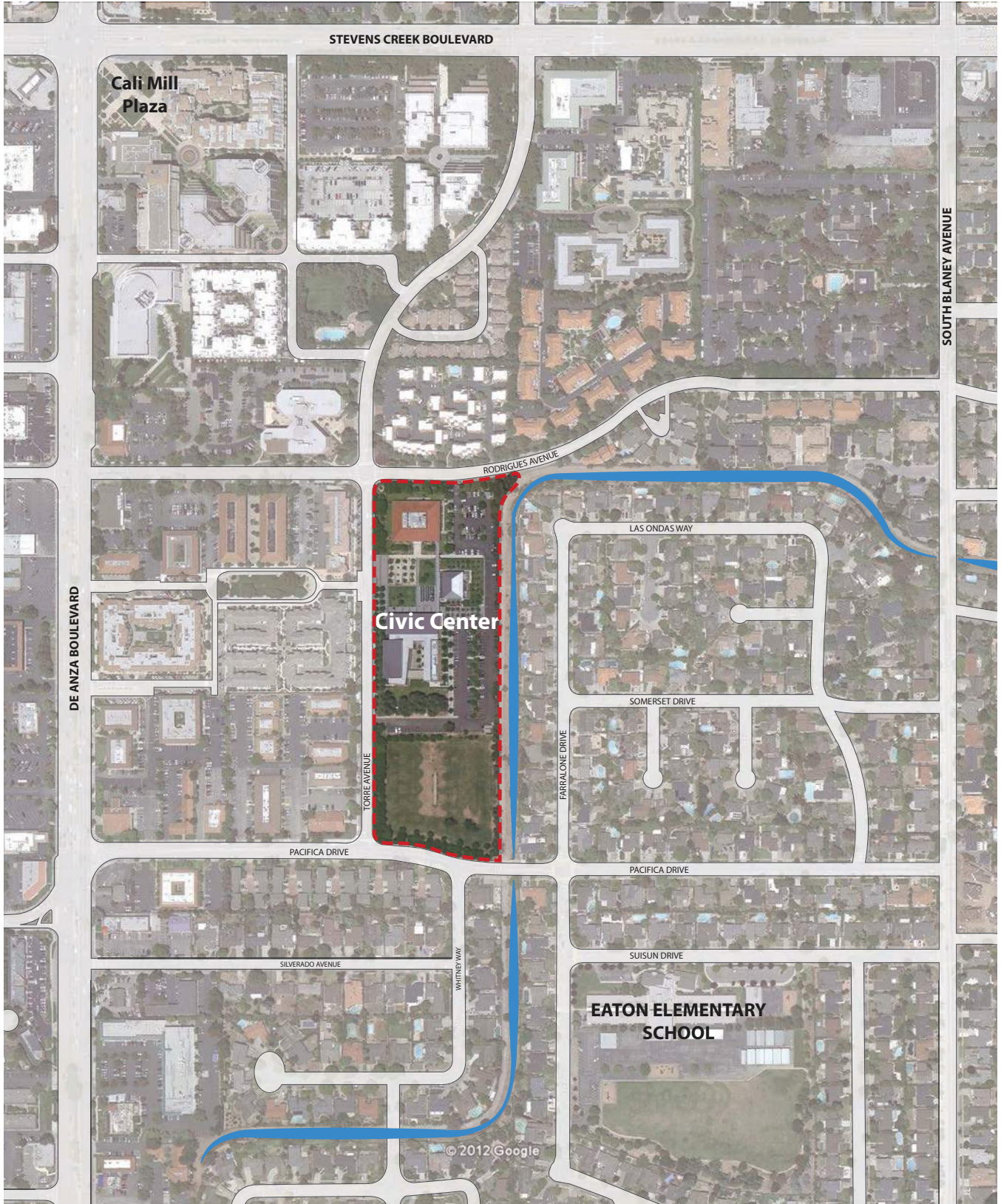


CUPERTINO IN 2011

CUPERTINO CIVIC CENTER MASTER PLAN FRAMEWORK

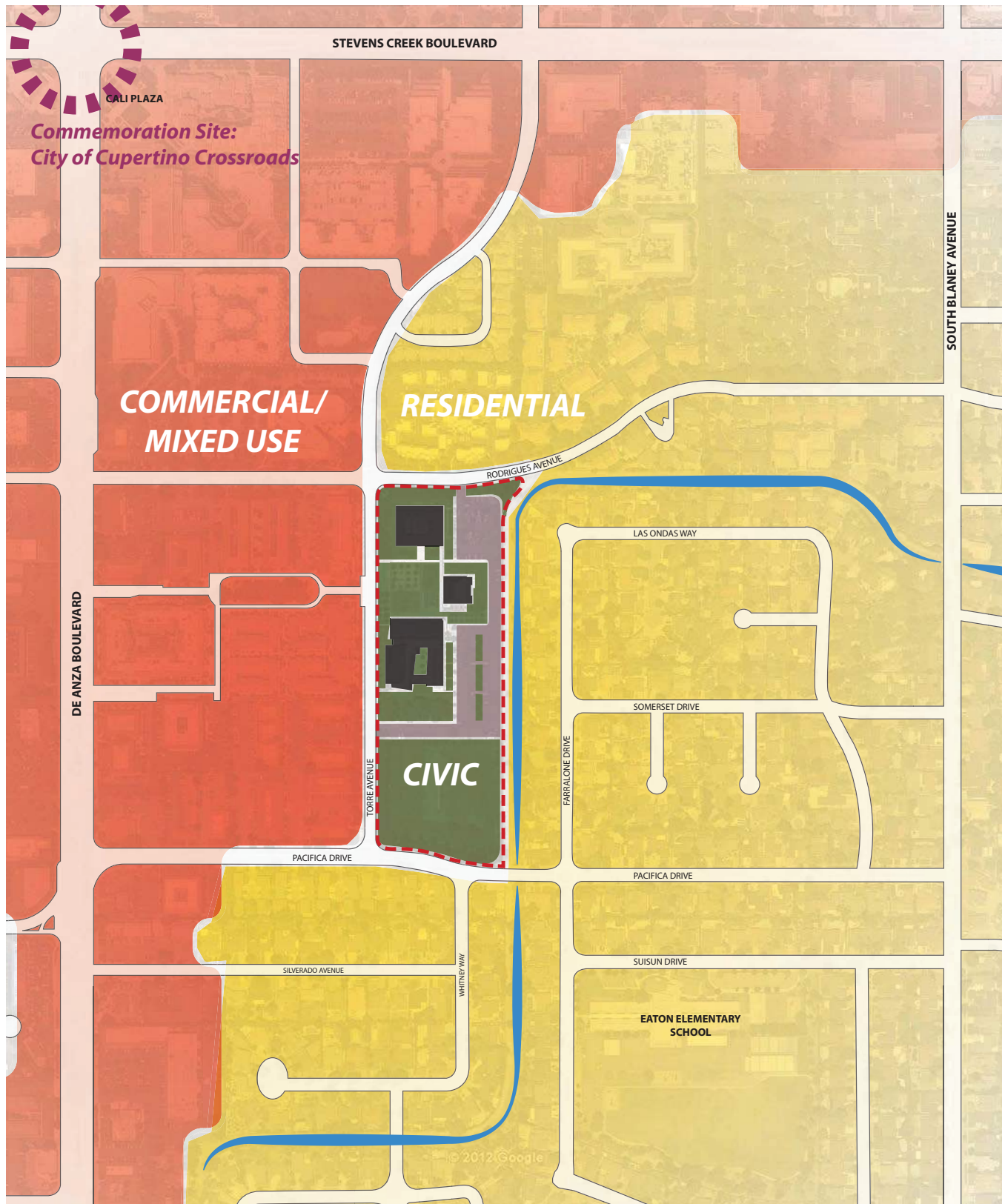


Civic Center Environs



Source: Google map

Generalized Land Use



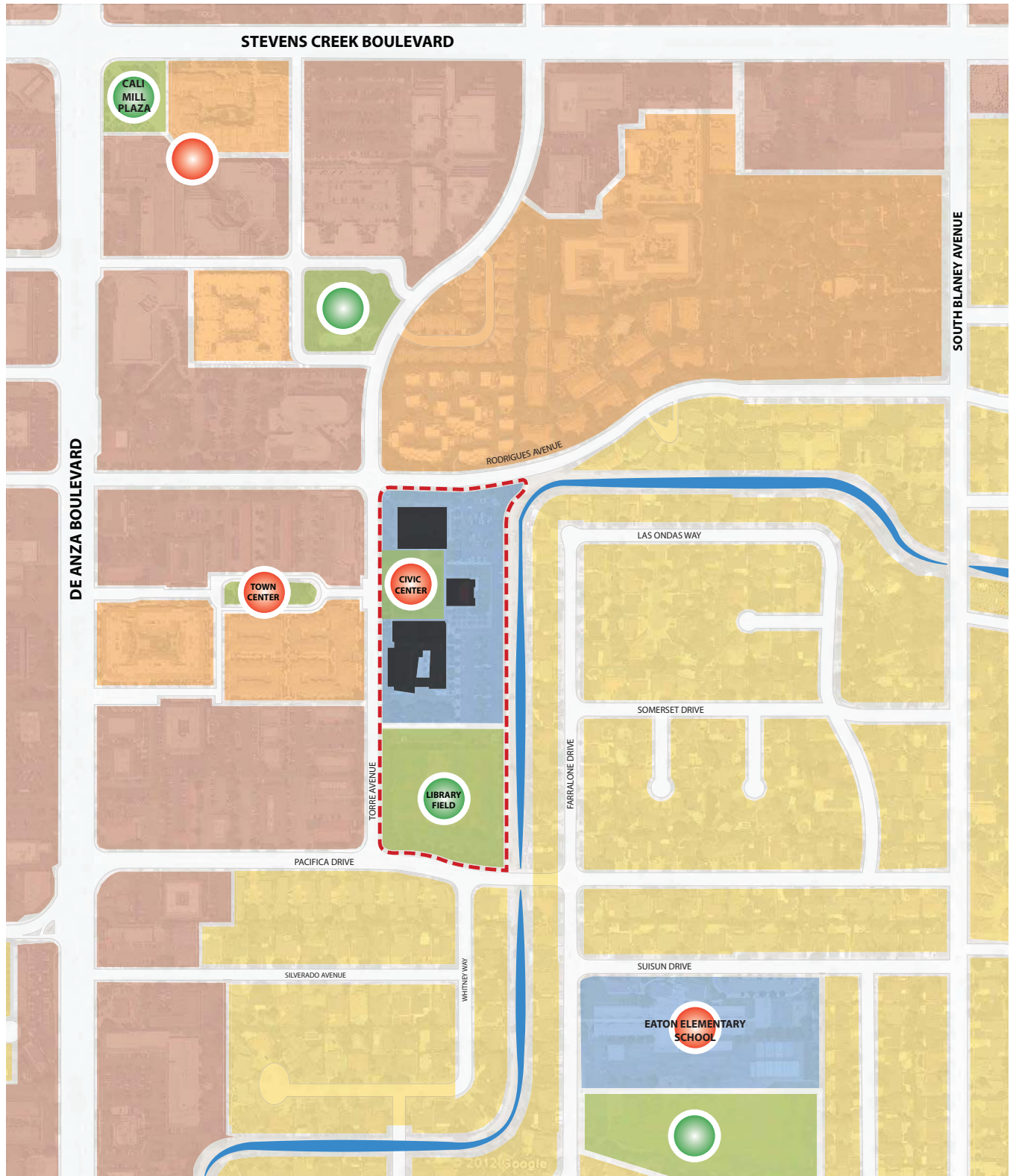
Source: City of Cupertino General Plan; City of Cupertino – Heart of the City Specific Plan.

 CIVIC CENTER

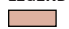


CUPERTINO CIVIC CENTER MASTER PLAN FRAMEWORK



Area Land Use



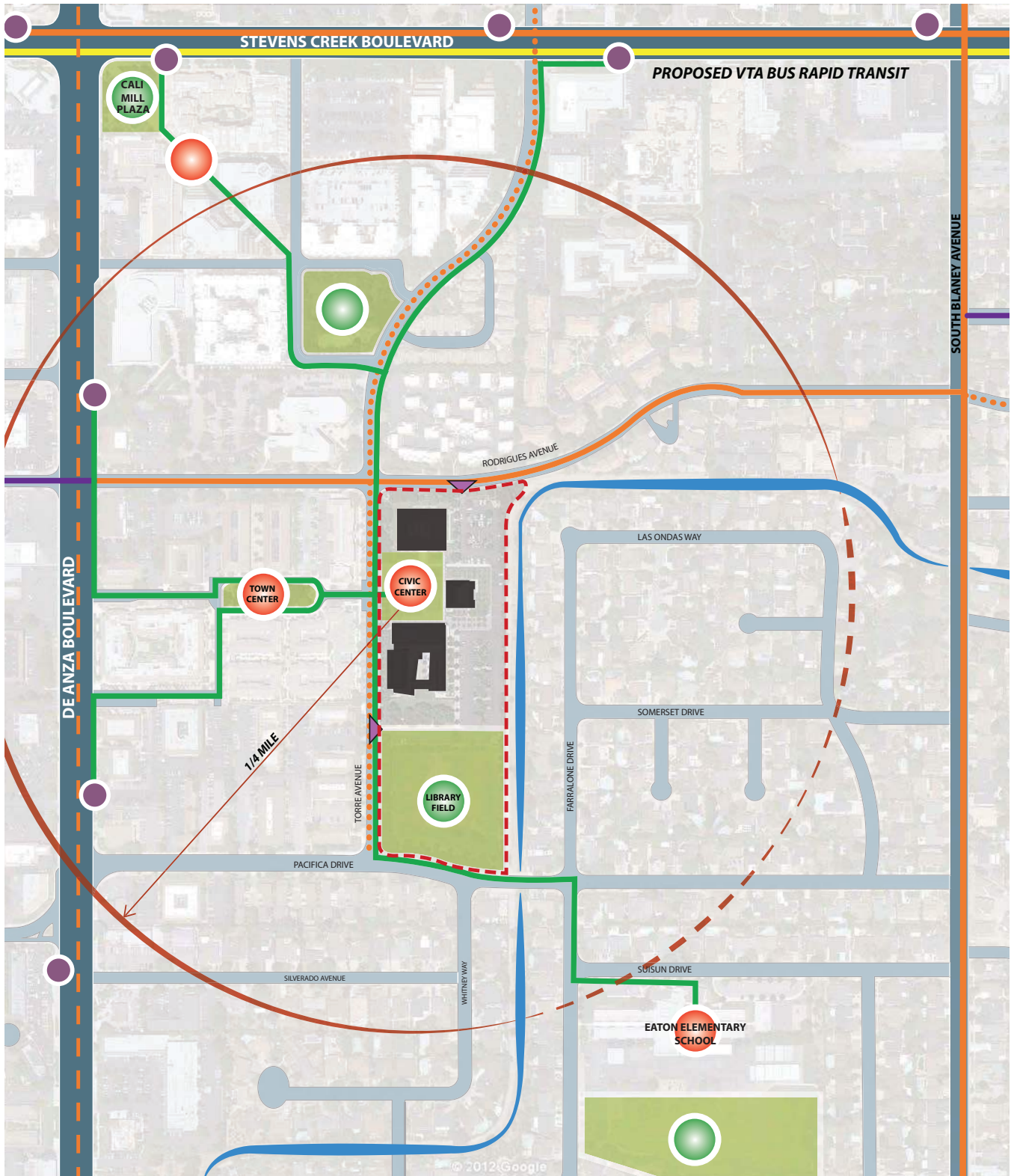
Source: City of Cupertino General Plan

	COMMERCIAL		INSTITUTIONAL / EDUCATIONAL		ACTIVITY NODE
	SINGLE FAMILY RESIDENTIAL		OPEN SPACE		OPEN SPACE
	MULTI FAMILY RESIDENTIAL		CIVIC CENTER		

CUPERTINO CIVIC CENTER MASTER PLAN FRAMEWORK



Area Circulation



Source: City of Cupertino General Plan 2000 - 2020; Bicycle Transportation Plan

LEGEND

- | | | | |
|-----------------------|----------------------------|------------------------|---------------------|
| ARTERIAL | VEHICULAR SITE ENTRY | EXISTING BICYCLE LANE | CIVIC CENTER |
| MINOR COLLECTOR | PROPOSED BUS RAPID TRANSIT | PROPOSED BICYCLE LANE | PEDESTRIAN MOVEMENT |
| LOCAL STREET PROPOSED | BUS STOP | EXISTING BICYCLE ROUTE | ACTIVITY NODE |
| | | PROPOSED BIKE ROUTE | OPEN SPACE |

CUPERTINO CIVIC CENTER MASTER PLAN FRAMEWORK



Civic Center



Source: Google map

Site Photos



CITY HALL



LIBRARY PLAZA & COMMUNITY HALL



CUPERTINO LIBRARY



CORRIDOR BETWEEN COMMUNITY HALL AND CUPERTINO LIBRARY



MEMORIAL GROVE



CREEK



TORRE AVE



LIBRARY FIELD

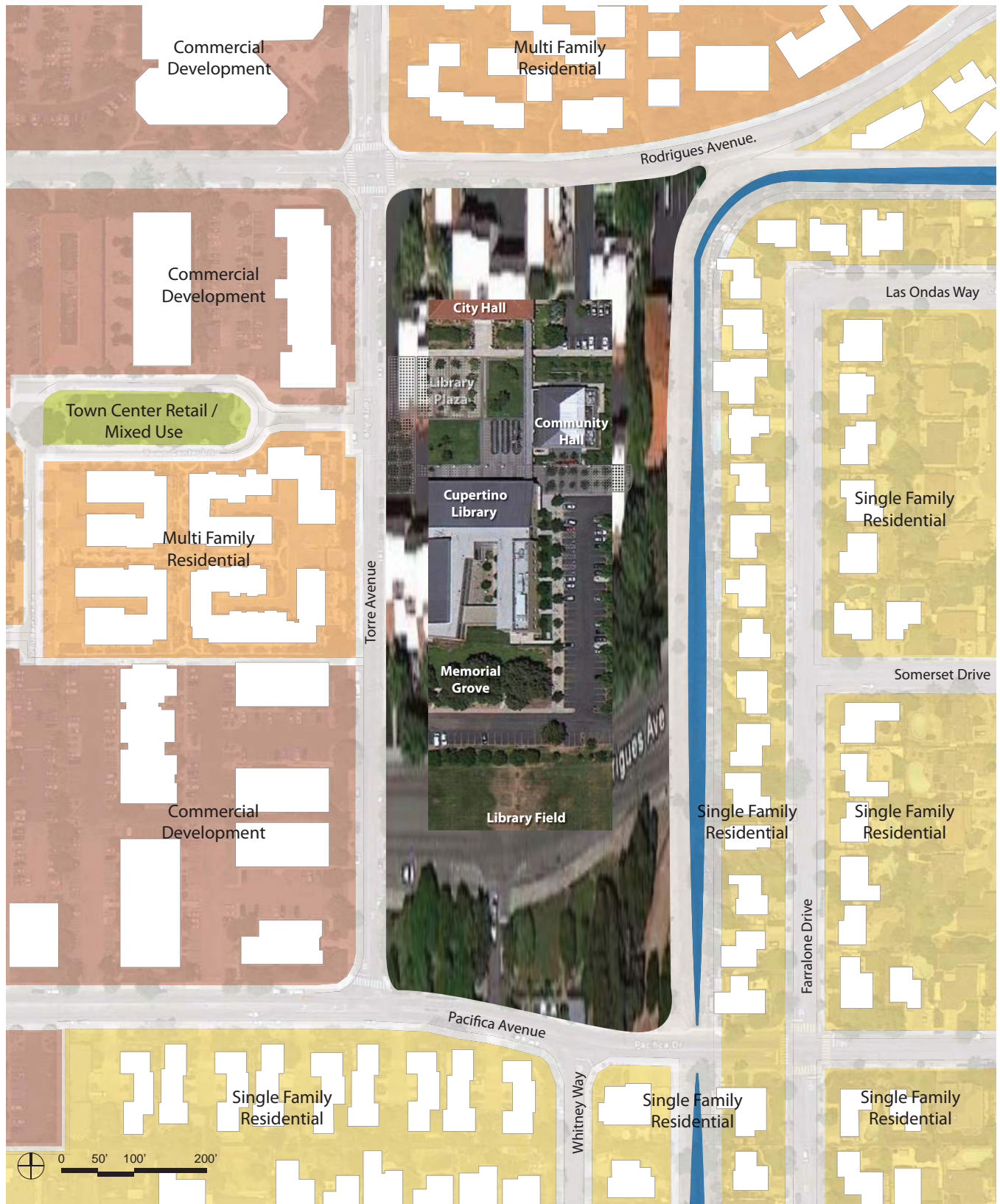


PARKING SPACE CLOSE TO LIBRARY

CUPERTINO CIVIC CENTER MASTER PLAN FRAMEWORK



Figure 0: Land Use



LEGEND

 COMMERCIAL	 MULTI FAMILY RESIDENTIAL
 SINGLE FAMILY RESIDENTIAL	 OPEN SPACE

Figure Q: Site Character



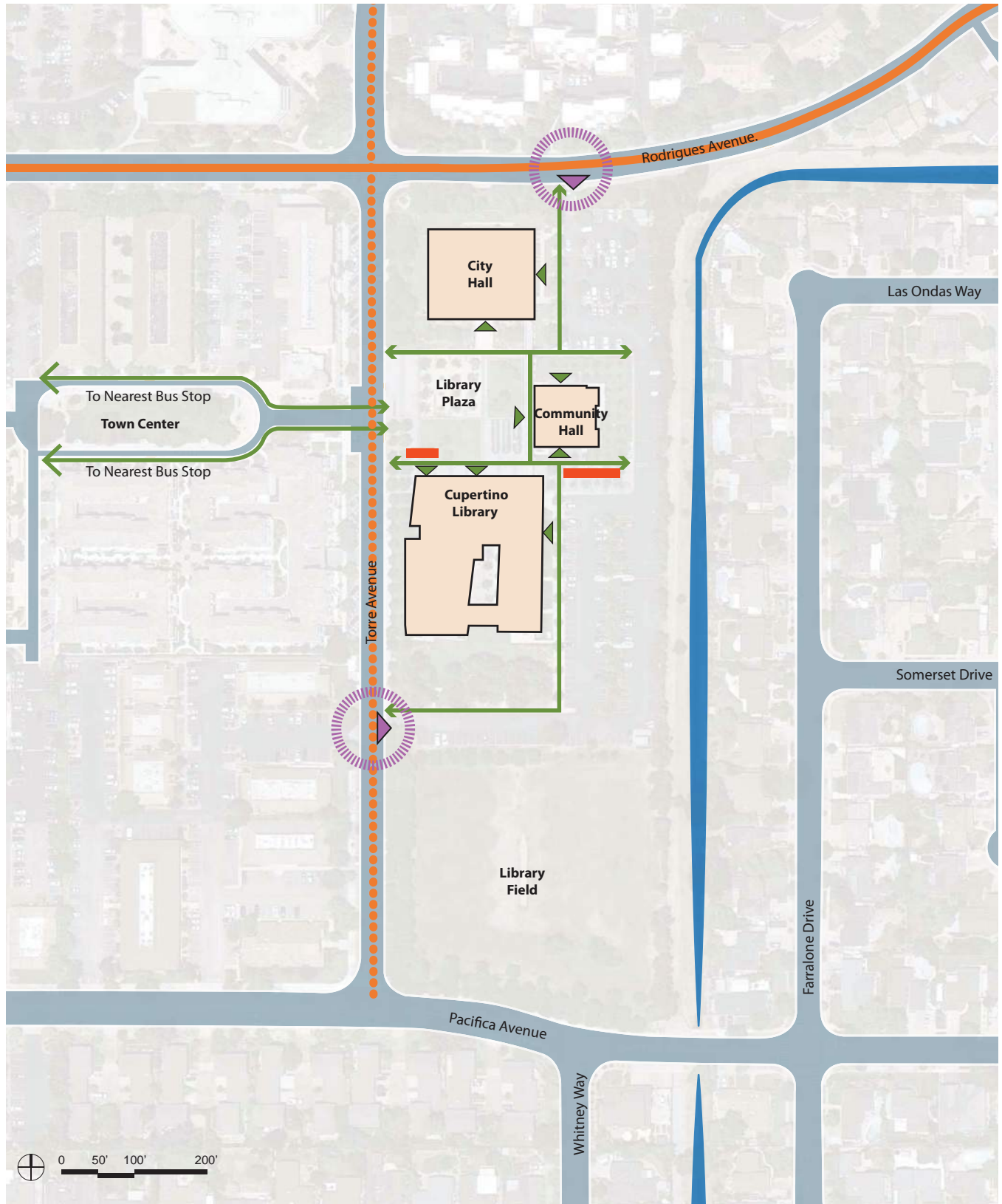
LEGEND

- | | | | | | | |
|--|---|--|---|---|--|--|
|  FORMAL LANDSCAPE - ACTIVE RECREATION |  FORMAL LANDSCAPE - PASSIVE RECREATION |  INFORMAL LANDSCAPE |  PLAZA |  PARKING |  LOCAL STREET |  BARRIER / EDGE AT DRAINAGE CHANNEL |
|--|---|--|---|---|--|--|

Figure R: Urban Design Character

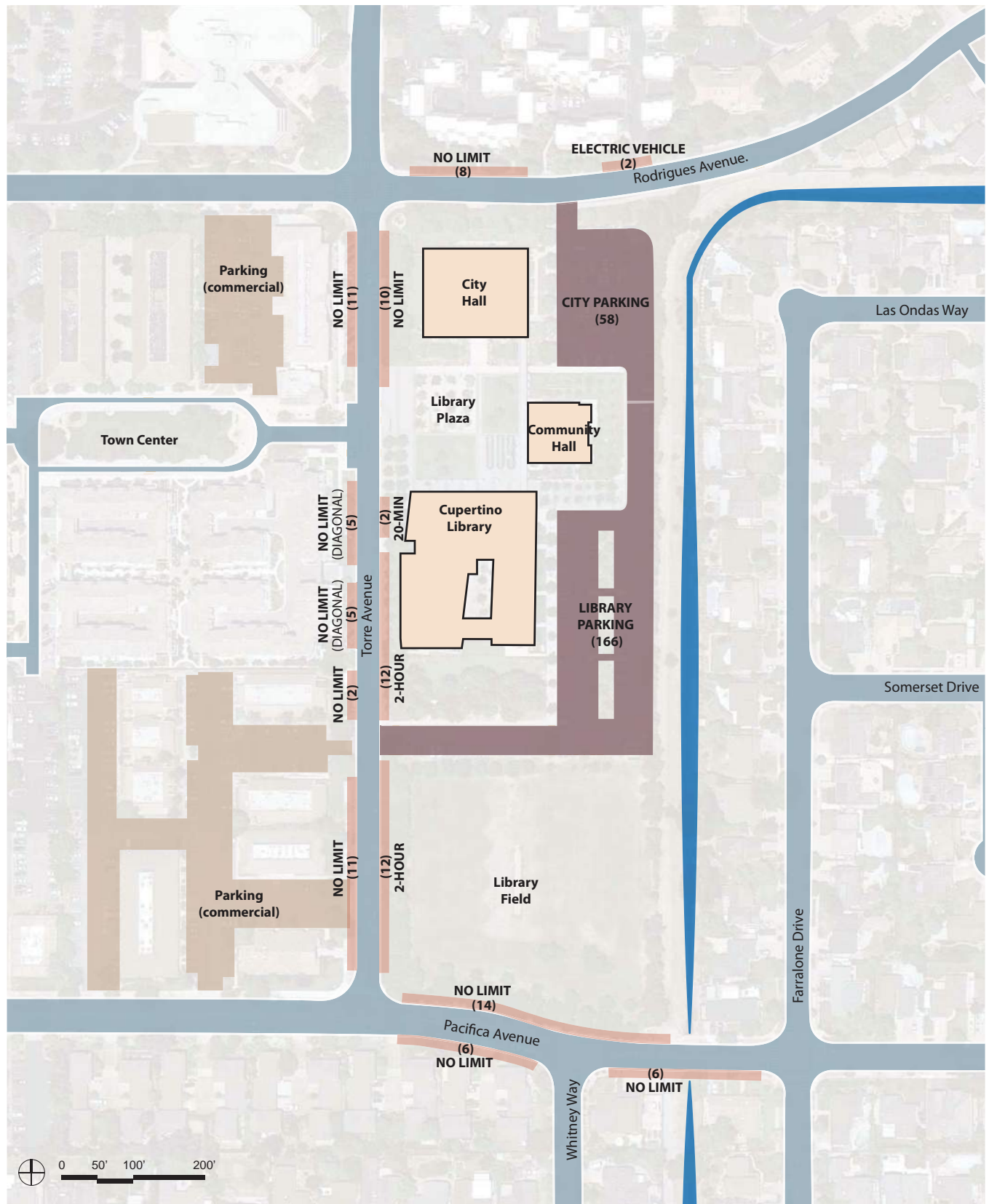


Figure S: Circulation



LEGEND			
	LOCAL STREET		BICYCLE EXISTING
	VEHICULAR ACCESS		BICYCLE PROPOSED
			BICYCLE PARKING
			PEDESTRIAN CONNECTION
			PEDESTRIAN ACCESS
			PARKING
			VEHICULAR SITE ENTRY POINT

Figure T: Parking - Existing



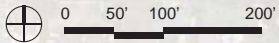
LEGEND
 ON-SITE SURFACE PARKING
 OFF-SITE SURFACE PARKING
 ON-STREET PARKING
 (XX) = NUMBER OF NET NEW PARKING SPACE

Figure U: Parking - Potential New



Cupertino Civic Center Master Plan Potential Additional Parking

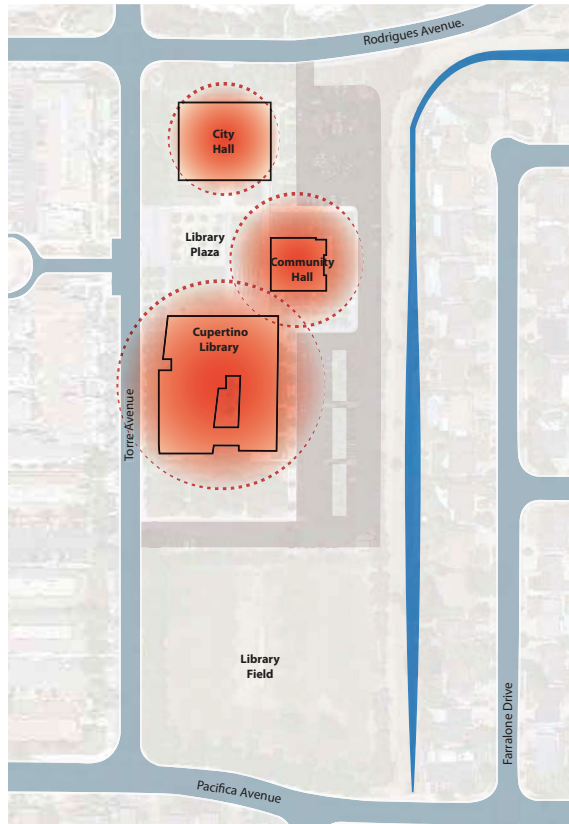
Item	F&P Memo	New Spaces	Displaced Spaces	Net Gain
On-Site Surface				
A	2	16	0	16
B	5a	53	(6)	47
C	5c	21	0	21
D	5b	68	(3)	65
On-Site Underground				
E		150	(44)	106
F	6	170	(5)	165
On-Street				
G	3	60	(36)	24
Off-Site Surface				
H		73	0	73
I		104	0	104



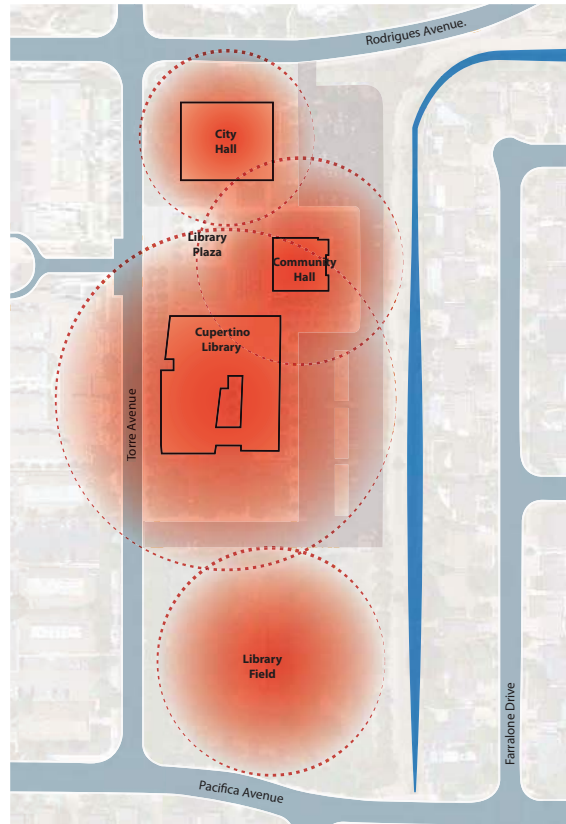
LEGEND

- ON-SITE SURFACE PARKING
- ON-SITE SURFACE UNDERGROUND PARKING
- ON-STREET DIAGONAL PARKING
- OFF-SITE SURFACE PARKING
- EXISTING PARKING
- (XX) = NUMBER OF NET NEW PARKING SPACE

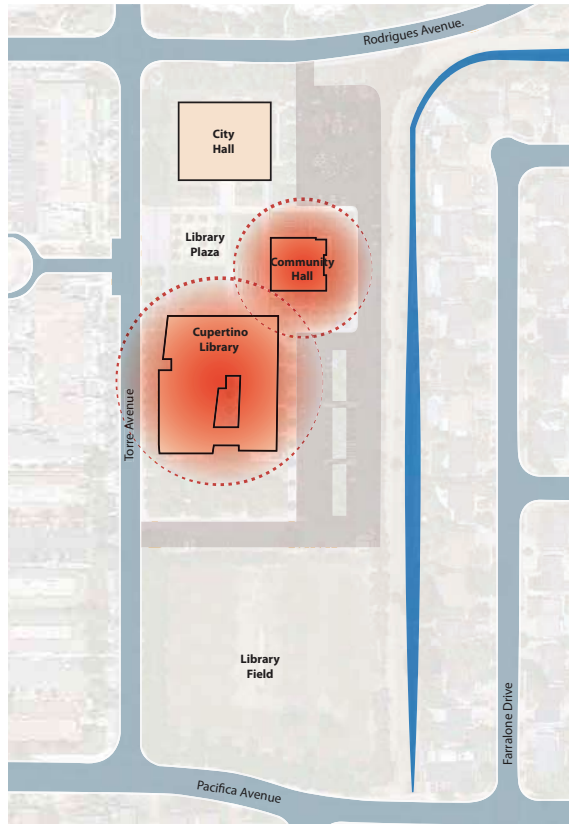
Figure V: General Usage Pattern



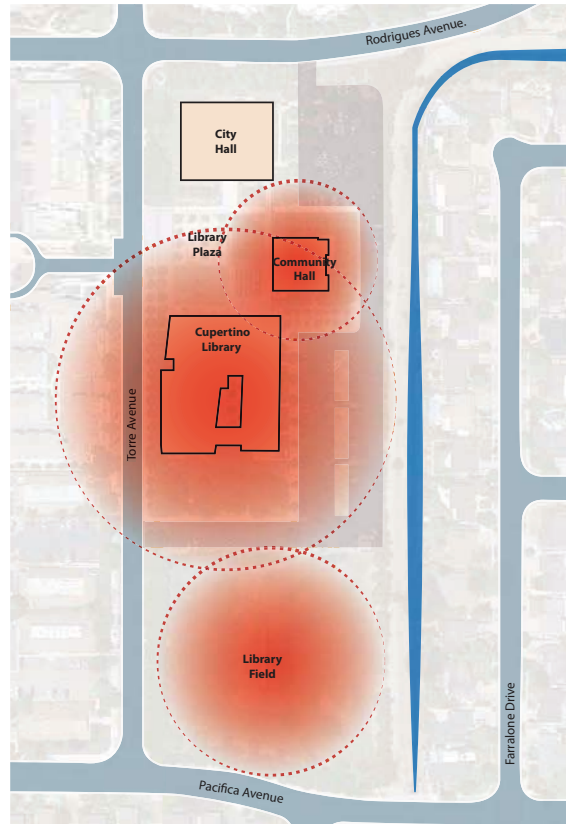
WEEKDAY MORNING



WEEKDAY AFTERNOON



WEEKDAY EVENING



WEEKEND

OPEN HOURS

City Hall

Monday to Thursday:
7:30 am - 5:30 pm
Friday: 7:30 am - 4:30 pm

Community Hall

Business Hours:
Monday to Thursday:
8:00 am - 10:00 pm
Friday: 8:00 am - 5:00 pm
Saturday: 8:30 am - 4:30 pm

Facility Rental Hours:

Sunday to Thursday:
8:00 am - 10:00 pm
Friday to Saturday:
8:00 am - 11:00 pm

Library

Monday to Thursday:
10:00 am - 9:00 pm
Friday to Saturday:
10:00 am - 6:00 pm
Sunday: 12:00 pm - 6:00 pm

Library Field

Daily Sunrise to Sunset

Figure W: Opportunities and Constraints

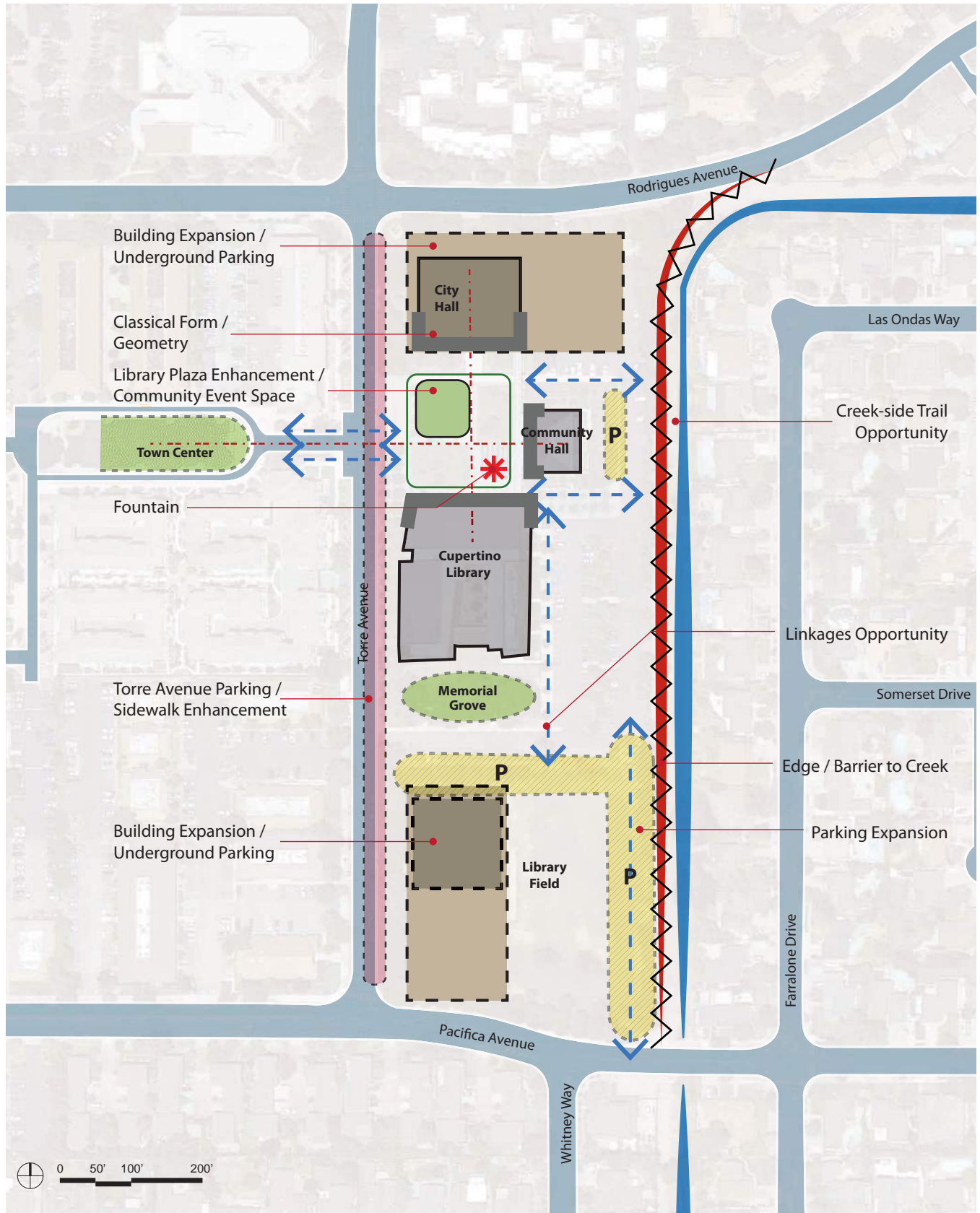


Figure X: Potential New Program Components

Community Center

- Meeting Rooms
- Classrooms
- Senior Center



Teen Center

- Performance Hall
- Event Rooms
- Classrooms
- Game Room
- Study Rooms
- Computer Lab
- Full Kitchen
- Basketball



Outdoor Community Space

- Amphitheater
- Outdoor “Flex Space”
- Children’s Playground
- Picnic Areas
- Festivals
- Events
- Farmer’s Market
- Trail along the creek



Figure A: Civic Center



Source: Google map

Figure B: SITE CHARACTER



LEGEND

- | | | | | | | | |
|---|---------------------------------------|---|--------------------|--|--------------|---|------------------------------------|
|  | FORMAL LANDSCAPE - ACTIVE RECREATION |  | INFORMAL LANDSCAPE |  | PARKING |  | BARRIER / EDGE AT DRAINAGE CHANNEL |
|  | FORMAL LANDSCAPE - PASSIVE RECREATION |  | PLAZA |  | LOCAL STREET | | |

Alternative 1: Civic Network



CUPERTINO CIVIC CENTER MASTER PLAN FRAMEWORK



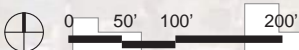
Alternative 2: Civic Youth



ONSITE PARKING TABULATION:

EXISTING SUPPLY:	224
NEW SPACES:	186
SPACES DISPLACED:	-26
TOTAL SPACES:	384

CIVIC YOUTH

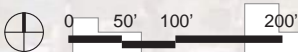


Alternative 3: Civic Life



PARKING TABULATION:	
EXISTING SUPPLY:	224
NEW SPACES:	187
SPACES DISPLACED:	-54
TOTAL SPACES:	357

CIVIC LIFE



CUPERTINO CIVIC CENTER MASTER PLAN FRAMEWORK



Table A: Cupertino Civic Center Parking Options

	Option	Short Term	Medium Term	Long Term
Parking Supply Increase Strategies				
1	Restripe lot and narrow spaces from 9 feet in width to 8.5 feet in width (6 spaces)		X	
2	Add perpendicular spaces in the parking lot near Sister City Grove (16 spaces)			X
3	Add diagonal parking on Torre Avenue (24 spaces)			X
4	Convert one Rodrigues Avenue parking space into approximately five motorcycle/scooter parking spaces (5 spaces)	X		
5	Extend parking lot onto portion of Library Field			X
5a	• Add 47 spaces to the north side of Library Field (47 spaces)			X
5b	• Add 48 to 68 spaces on Library Field in extension to Pacifica Drive (48-68 spaces)			X
5c	• Add 21 spaces by expanding the Torre Avenue driveway (21 spaces)		X	
6	Construct parking deck below Library Field or new/renovated buildings on site (varies)			X
Parking Demand Decrease Strategies				
7	Create Transportation Demand Management Programs for employees	X		
7a	• Provide commuter checks to employees to encourage transit ridership	X		
7b	• Create a bike buddy program for employees	X		
7c	• Provide bike subsidies to employees through the commuter check program	X		
7d	• Educate employees about bike commuting with handouts and programming	X		
7e	• Provide parking cash-out for employees who do not drive to work	X		
7f	• Create healthy families program to encourage families to bike/walk to the library	X		
7g	• Designate carpool parking spaces	X		
7h	• Provide shuttle service to Caltrain stations			X
8	Construct a multi-use path along the creek		X	
Parking Management Measures				
9	Implement monthly parking fees for employees		X	
10	Charge visitors for parking at peak hours		X	
11	Restrict employee parking to least-convenient spaces, including Pacifica Drive		X	
12	Move city vehicles off-site		X	
13	Add bicycle racks near the City Hall entrance	X		
14	Create parking time limits in the lot		X	
15	Remove 2-hour on-street time limits, while retaining the 20-minute limits near the café.		X	
16	Add parking signs and pavement markings to spaces on Pacifica Drive next to the Library Field.		X	
17	Develop an overflow parking plan	X		
17a	• Discourage City employees from parking during peak community hall events	X		
17b	• Add valet parking for large events		X	

Source: Fehr & Peers, March 2012, revised July 2012