

# VALLCO TOWN CENTER

OWNER - VALLCO PROPERTY OWNER LLC  
965 PAGE MILL ROAD, PALO ALTO, CA 94304  
T. 650-344-1300

ARCHITECTURE - RAFAEL VINOLY ARCHITECTS  
50 VANDAM STREET, NEW YORK, NY 10013  
T. 212-924-0500

ARCHITECTURE - RAFAEL VINOLY ARCHITECTS  
1033 N. WOLFE ROAD, CUPERTINO, CA 95014  
T. 408-627-7000

LANDSCAPE ARCHITECTURE - OLIN PARTNERSHIP LTD.  
150 S. INDEPENDENCE BLVD., SUITE 1103, PHILADELPHIA, PA 19106  
T. 215-440-0030

CIVIL - SANDIS CIVIL ENGINEERS SURVEYORS PLANNERS, INC.  
1700 S. WINCHESTER BLVD., SUITE 200, CAMPBELL, CA 95008  
T. 408-636-0900

TRANSPORTATION ENGINEERING - ARUP NORTH AMERICA, LTD.  
660 MISSION STREET, SUITE 700, SAN FRANCISCO, CA 94105  
T. 415-567-9445

LIGHTING - ONE LUX STUDIO  
167 JPK BLVD, SUITE 1665, PHILADELPHIA, PA 19103  
T. 215-681-1150

SIGNAGE - EXIT  
167 JPK BLVD, SUITE 1665, PHILADELPHIA, PA 19103  
T. 215-681-1150

PARKING ENGINEERING - WATRY DESIGN, INC.  
2099 GATEWAY PLACE, SUITE 550, SAN JOSE, CA 95110  
T. 408-392-7900

WASTE MANAGEMENT - CINLITTLE INTERNATIONAL  
535 NORTH BRAND BLVD, STE 710 GLENDALE, CA 92103  
T. 626-441-7700

## LEGEND

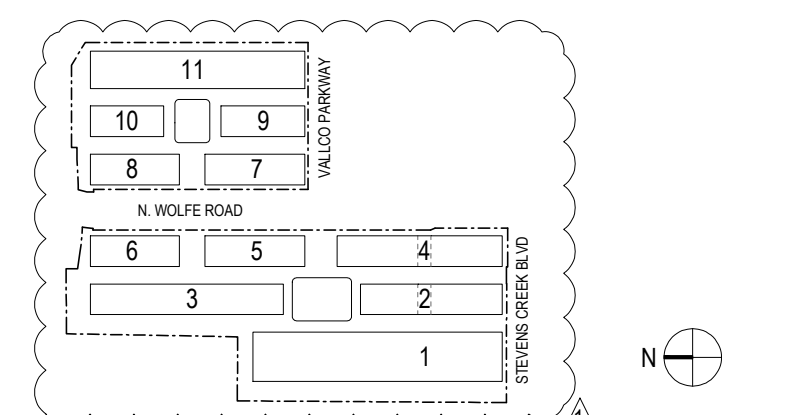
- OFFICE
- OFFICE LOBBY / AMENITY
- RESIDENTIAL
- RESIDENTIAL LOBBY / AMENITY
- RETAIL
- RETAIL LOBBY / AMENITY
- CORE / CORRIDOR
- OFFICE PARKING
- RESIDENTIAL PARKING
- RIDE SHARE (ZIP CAR)
- RETAIL PARKING
- SHARED
- E.V. PARKING
- ACCESSIBLE PARKING
- VAN ACCESSIBLE PARKING
- CENTRAL PLANT
- LOADING + TRASH
- TRASH ROOM

## NOT FOR CONSTRUCTION

DISCLAIMER  
THE ARCHITECT / ENGINEER SHALL HAVE NO RESPONSIBILITY FOR ANY LIABILITY, LOSS, COST, DAMAGE OR EXPENSE ARISING FROM OR RELATING TO ANY USE OF THIS DOCUMENT FOR ANY PURPOSE OTHER THAN ITS INTENDED PURPOSE ON THIS PROJECT. THIS DOCUMENT IS TO BE CONSIDERED IN CONJUNCTION WITH ALL RELATED DOCUMENTATION ON THIS PROJECT. ANY DISCREPANCIES IDENTIFIED IN THIS DOCUMENT MUST BE REPORTED IMMEDIATELY TO THE ARCHITECT BEFORE PROCEEDING. CONTRACTORS MUST VERIFY ALL DIMENSIONS PRIOR TO PROCEEDING WITH ANY WORK. ONLY FIGURED DIMENSIONS ARE TO BE USED FOR VERIFICATION.

## SB-35 DEVELOPMENT APPLICATION

REV	DESCRIPTION	DATE
REV-0	SB-35 DEVELOPMENT APPLICATION	03/27/2018
REV-1	SB-35 APPLICATION REVISIONS	06/06/2018



ARCHITECTS PROJECT NUMBER: 708011  
PROJECT PHASE: SB-35 DEVELOPMENT APPLICATION

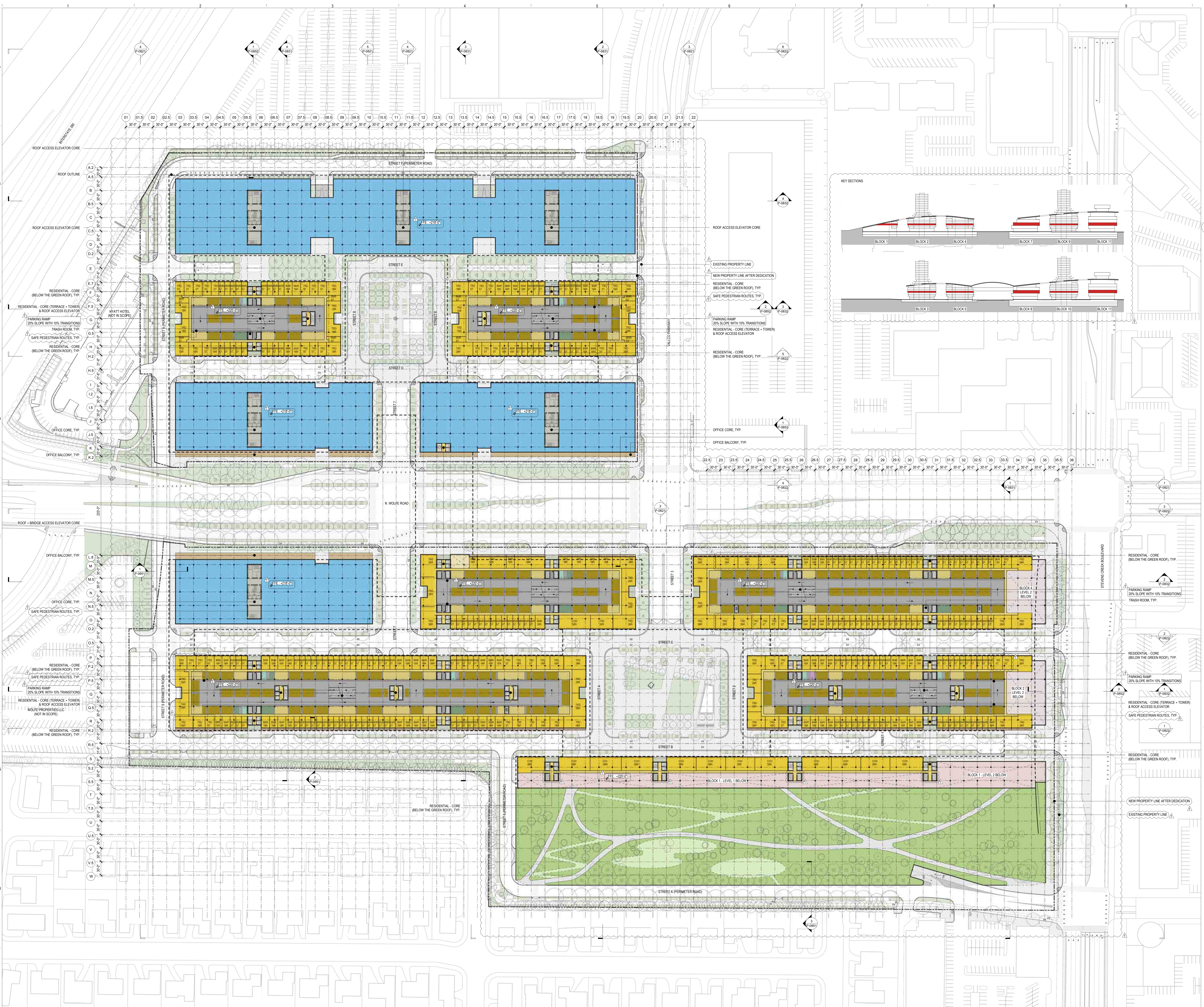
IF THIS DRAWING IS NOT 36"X48" IT IS A REDUCED PRINT. REFER TO GRAPHIC SCALE.



BUILDING PLAN - FF ELEVATION @ 220'-0"

SHEET NUMBER: P-0800.05

© 2018 RAFAEL VINOLY ARCHITECTS P.C.





# VALLCO TOWN CENTER

OWNER - VALLCO PROPERTY OWNER LLC  
 965 PAGE MILL ROAD, PALO ALTO, CA 94304  
 T. 650-344-1300

ARCHITECTURE - RAFAEL VINOLY ARCHITECTS  
 50 VANDAM STREET, NEW YORK, NY 10013  
 T. 212-924-0500

ARCHITECTURE - RAFAEL VINOLY ARCHITECTS  
 1033 N. WOLFE ROAD, CUPERTINO, CA 95014  
 T. 408-627-7000

LANDSCAPE ARCHITECTURE - OLIN PARTNERSHIP LTD.  
 150 S. INDEPENDENCE BLVD., SUITE 1123, PHILADELPHIA, PA 19106  
 T. 215-440-0030

CIVIL - SANDIS CIVIL ENGINEERS SURVEYORS PLANNERS, INC.  
 1700 S. WINCHESTER BLVD., SUITE 200, CAMBRIDGE, CA 95008  
 T. 408-636-0900

TRANSPORTATION ENGINEERING - ARUP NORTH AMERICA, LTD.  
 560 MISSION STREET, SUITE 700, SAN FRANCISCO, CA 94105  
 T. 415-567-9445

LIGHTING - ONE LUX STUDIO  
 158 HESS 29TH STREET, 10TH FLOOR, NEW YORK, NY 10011  
 T. 212-203-6750

SIGNAGE - EXIT  
 1617 JFK BLVD, SUITE 1665, PHILADELPHIA, PA 19103  
 T. 215-681-1150

PARKING ENGINEERING - WATRY DESIGN, INC.  
 2099 GATEWAY PLACE, SUITE 550, SAN JOSE, CA 95110  
 T. 408-392-7900

WASTE MANAGEMENT - CINLITTLE INTERNATIONAL  
 535 NORTH BRAND BLVD, STE 710 GLENDALE, CA 92103  
 T. 626-441-7700

## LEGEND

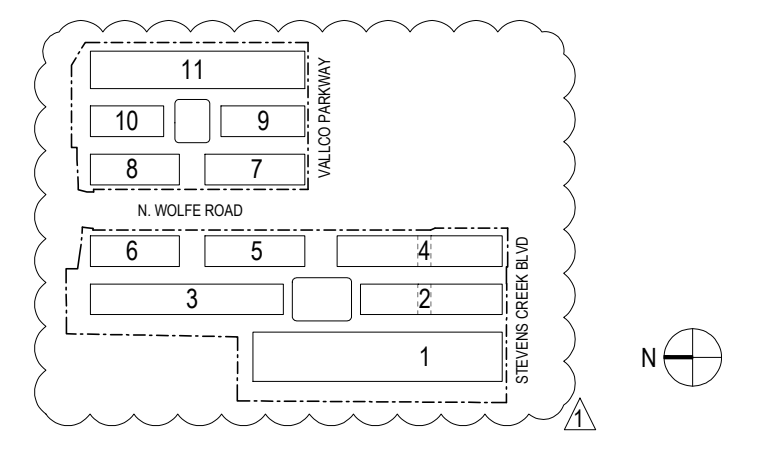
- OFFICE
- OFFICE LOBBY / AMENITY
- RESIDENTIAL
- RESIDENTIAL LOBBY / AMENITY
- RETAIL
- RETAIL LOBBY / AMENITY
- CORE / CORRIDOR
- OFFICE PARKING
- RESIDENTIAL PARKING
- RIDE SHARE (ZIP CAR)
- RETAIL PARKING
- SHARED
- E.V. PARKING
- ACCESSIBLE PARKING
- VAN ACCESSIBLE PARKING
- CENTRAL PLANT
- LOADING + TRASH
- TRASH ROOM

## NOT FOR CONSTRUCTION

DISCLAIMER  
 THE ARCHITECT / ENGINEER SHALL HAVE NO RESPONSIBILITY FOR ANY LIABILITY, LOSS, COST, DAMAGE OR EXPENSE ARISING FROM OR RELATING TO ANY USE OF THIS DOCUMENT FOR ANY PURPOSE OTHER THAN ITS INTENDED PURPOSE ON THIS PROJECT. THIS DOCUMENT IS TO BE CONSIDERED IN CONJUNCTION WITH ALL RELATED DOCUMENTATION ON THIS PROJECT. ANY DISCREPANCIES IDENTIFIED IN THIS DOCUMENT MUST BE REPORTED IMMEDIATELY TO THE ARCHITECT BEFORE PROCEEDING. CONTRACTORS MUST VERIFY ALL DIMENSIONS PRIOR TO PROCEEDING WITH ANY WORK. ONLY FIGURED DIMENSIONS ARE TO BE USED FOR VERIFICATION.

## SB-35 DEVELOPMENT APPLICATION

REV	DESCRIPTION	DATE
REV-0	SB-35 DEVELOPMENT APPLICATION	03/27/2018
REV-1	SB-35 APPLICATION REVISIONS	06/06/2018



ARCHITECTS PROJECT NUMBER: 708011  
 PROJECT PHASE: SB-35 DEVELOPMENT APPLICATION

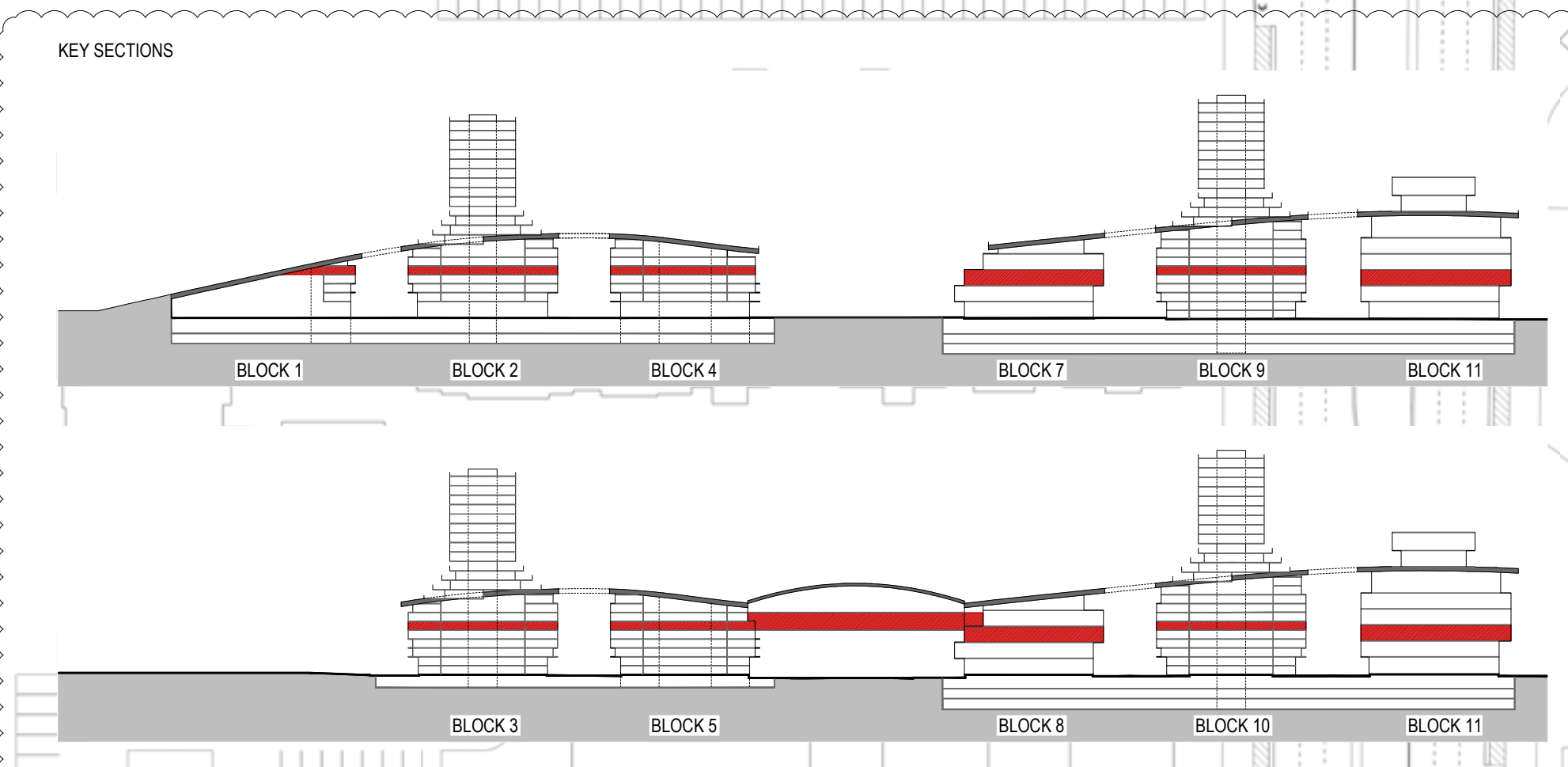
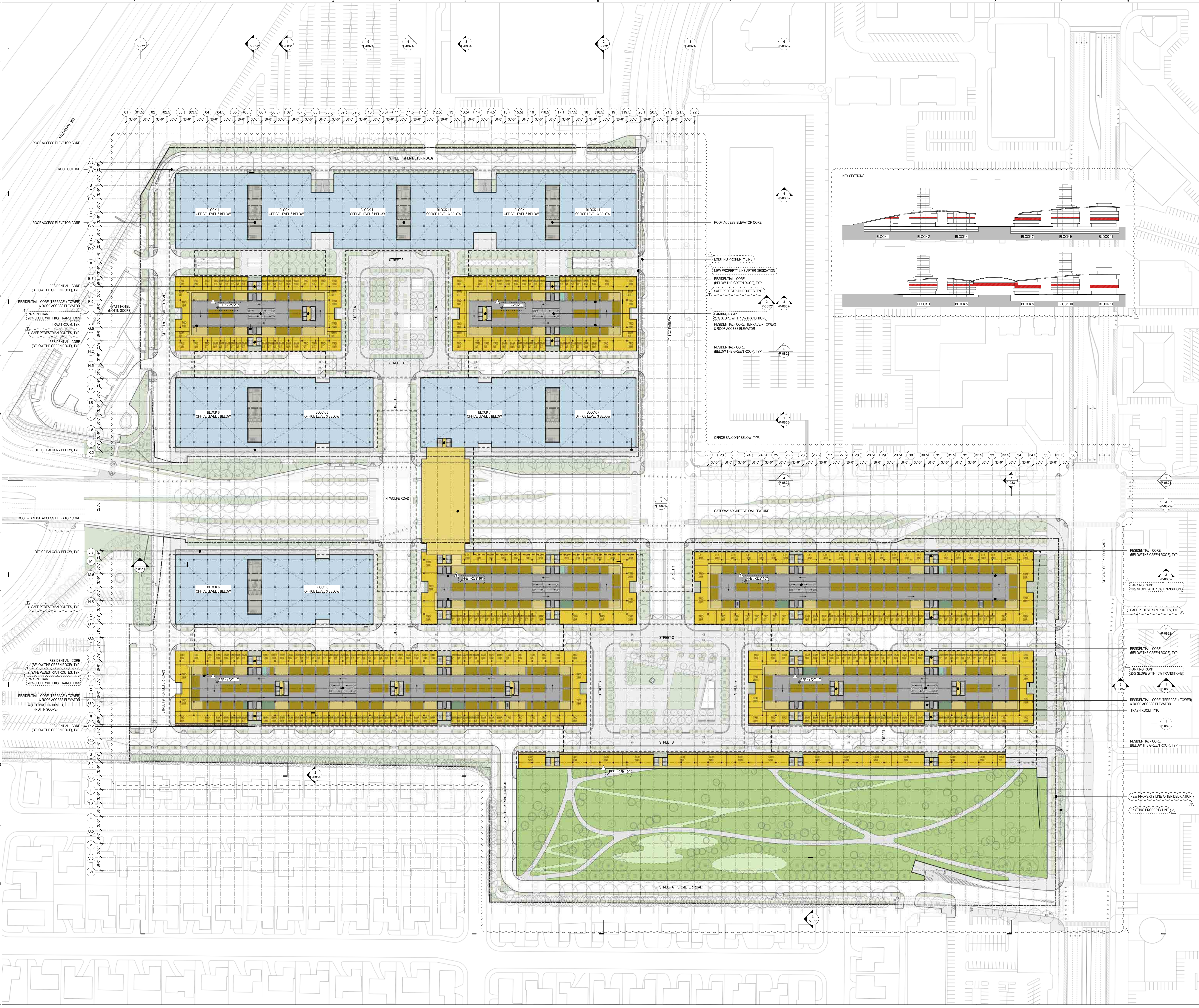
IF THIS DRAWING IS NOT 36" x 48" IT IS A REDUCED PRINT. REFER TO GRAPHIC SCALE.



BUILDING PLAN - FF ELEVATION @ 229'-10"

SHEET TITLE: P-0800.06

SHEET NUMBER: © 2018 RAFAEL VINOLY ARCHITECTS P.C.





# VALLCO TOWN CENTER

OWNER - VALLCO PROPERTY OWNER LLC  
 965 PAGE MILL ROAD, PALO ALTO, CA 94304  
 T. 650-344-1300

ARCHITECTURE - RAFAEL VINOLY ARCHITECTS  
 50 VANDAM STREET, NEW YORK, NY 10013  
 T. 212-924-0500

ARCHITECTURE - RAFAEL VINOLY ARCHITECTS  
 1033 N. WOLFE ROAD, CUPERTINO, CA 95014  
 T. 408-627-7000

LANDSCAPE ARCHITECTURE - OLIN PARTNERSHIP LTD.  
 150 S. INDEPENDENCE MALL, W. SUITE 1103, PHILADELPHIA, PA 19106  
 T. 215-440-0030

CIVIL - SANDIS CIVIL ENGINEERS SURVEYORS PLANNERS, INC.  
 1700 S. WINCHESTER BLVD., SUITE 200, CAMPBELL, CA 95008  
 T. 408-636-0900

TRANSPORTATION ENGINEERING - ARUP NORTH AMERICA, LTD.  
 560 MISSION STREET, SUITE 700, SAN FRANCISCO, CA 94105  
 T. 415-567-9445

LIGHTING - ONE LUX STUDIO  
 158 HESS 29TH STREET, 10TH FLOOR, NEW YORK, NY 10011  
 T. 212-201-6750

SIGNAGE - EXIT  
 1617 JFK BLVD, SUITE 1665, PHILADELPHIA, PA 19103  
 T. 215-681-1150

PARKING ENGINEERING - WATRY DESIGN, INC.  
 2099 GATEWAY PLACE, SUITE 550, SAN JOSE, CA 95110  
 T. 408-392-7900

WASTE MANAGEMENT - CIN LITTLE INTERNATIONAL  
 535 NORTH BRAND BLVD, STE 710 GLENDALE, CA 91203  
 T. 626-441-7700

## LEGEND

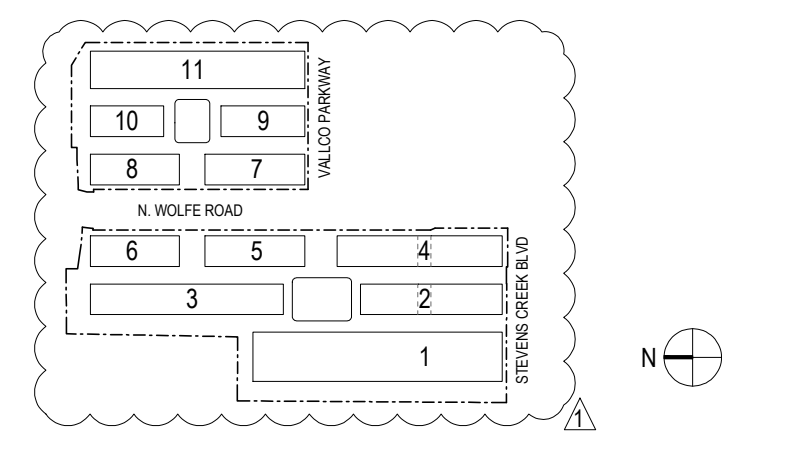
- OFFICE
- OFFICE LOBBY / AMENITY
- RESIDENTIAL
- RESIDENTIAL LOBBY / AMENITY
- RETAIL
- RETAIL LOBBY / AMENITY
- CORE / CORRIDOR
- OFFICE PARKING
- RESIDENTIAL PARKING
- RIDE SHARE (ZIP CAR)
- RETAIL PARKING
- SHARED
- E.V. PARKING
- ACCESSIBLE PARKING
- VAN ACCESSIBLE PARKING
- CENTRAL PLANT
- LOADING + TRASH
- TRASH ROOM

## NOT FOR CONSTRUCTION

DISCLAIMER  
 THE ARCHITECT / ENGINEER SHALL HAVE NO RESPONSIBILITY FOR ANY LIABILITY, LOSS, COST, DAMAGE OR EXPENSE ARISING FROM OR RELATING TO ANY USE OF THIS DOCUMENT FOR ANY PURPOSE OTHER THAN ITS INTENDED PURPOSE ON THIS PROJECT. THIS DOCUMENT IS TO BE CONSIDERED IN CONJUNCTION WITH ALL RELATED DOCUMENTATION ON THIS PROJECT. ANY DISCREPANCIES IDENTIFIED IN THIS DOCUMENT MUST BE REPORTED IMMEDIATELY TO THE ARCHITECT BEFORE PROCEEDING. CONTRACTORS MUST VERIFY ALL DIMENSIONS PRIOR TO PROCEEDING WITH ANY WORK. ONLY FIGURED DIMENSIONS ARE TO BE USED FOR VERIFICATION.

## SB-35 DEVELOPMENT APPLICATION

REV	DESCRIPTION	DATE
REV-0	SB-35 DEVELOPMENT APPLICATION	03/27/2018
REV-1	SB-35 APPLICATION REVISIONS	06/06/2018



ARCHITECTS PROJECT NUMBER: 708011

PROJECT PHASE: SB-35 DEVELOPMENT APPLICATION

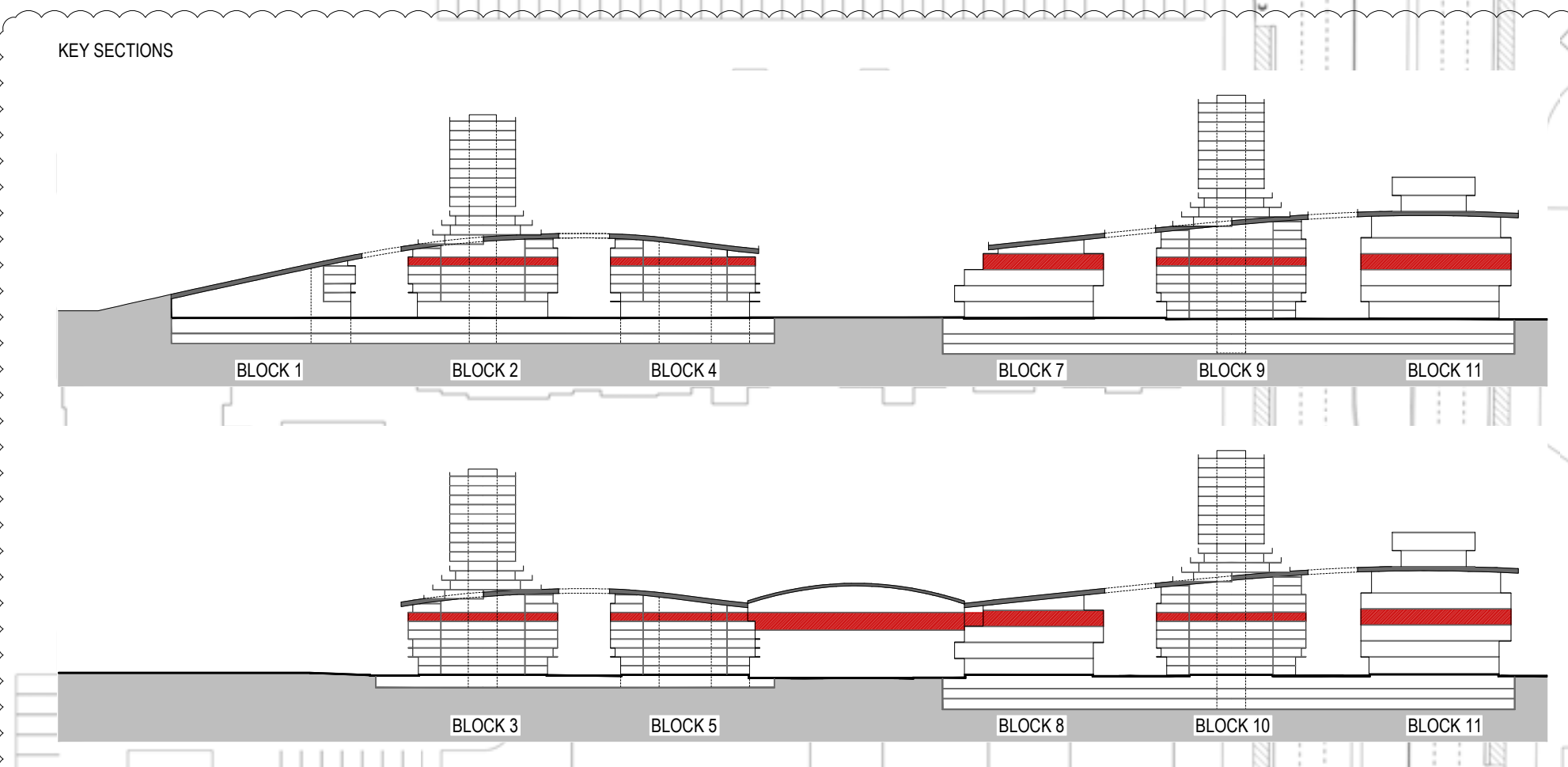
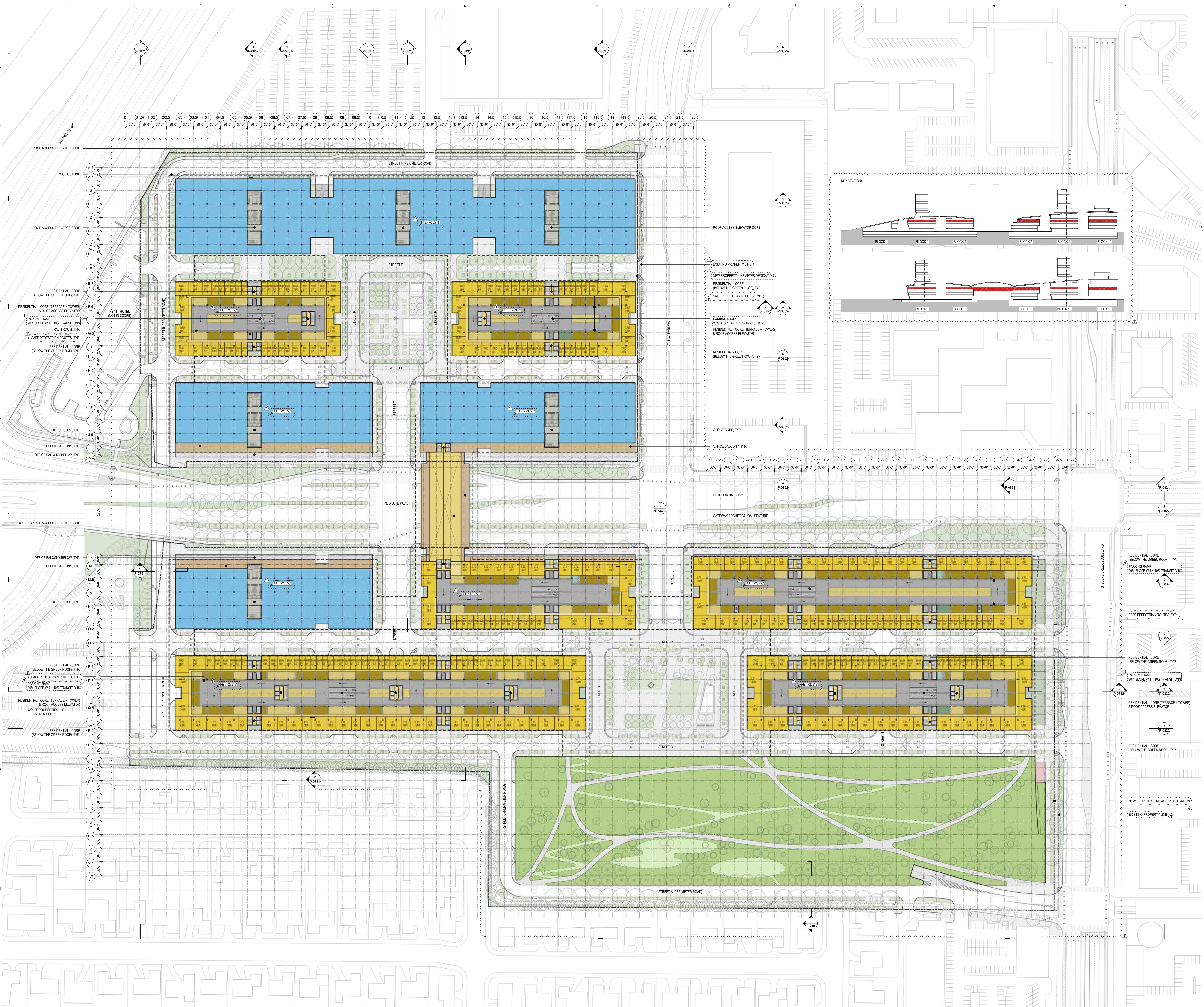
IF THIS DRAWING IS NOT 36"X48" IT IS A REDUCED PRINT. REFER TO GRAPHIC SCALE.



BUILDING PLAN - FF ELEVATION @ 239'-8"

SHEET TITLE: P-0800.07

SHEET NUMBER: © 2018 RAFAEL VINOLY ARCHITECTS P.C.





# VALLCO TOWN CENTER

OWNER - VALLCO PROPERTY OWNER LLC  
 965 PAGE MILL ROAD, PALO ALTO, CA 94304  
 T. 650-344-1300

ARCHITECTURE - RAFAEL VINOLY ARCHITECTS  
 50 VANDAM STREET, NEW YORK, NY 10013  
 T. 212-924-0500

ARCHITECTURE - RAFAEL VINOLY ARCHITECTS  
 1033 N. WOLFE ROAD, CUPERTINO, CA 95014  
 T. 408-627-7000

LANDSCAPE ARCHITECTURE - OLIN PARTNERSHIP LTD.  
 150 S. INDEPENDENCE MALL, W. SUITE 1123, PHILADELPHIA, PA 19106  
 T. 215-440-0030

CIVIL - SANDIS CIVIL ENGINEERS SURVEYORS PLANNERS, INC.  
 1700 S. WINCHESTER BLVD., SUITE 200, CAMPELL, CA 95008  
 T. 408-636-0900

TRANSPORTATION ENGINEERING - ARUP NORTH AMERICA, LTD.  
 560 MISSION STREET, SUITE 700, SAN FRANCISCO, CA 94105  
 T. 415-567-9445

LIGHTING - ONE LUX STUDIO  
 1617 JPK BLVD, SUITE 1665, PHILADELPHIA, PA 19103  
 T. 215-681-1150

SIGNAGE - EXIT  
 1617 JPK BLVD, SUITE 1665, PHILADELPHIA, PA 19103  
 T. 215-681-1150

PARKING ENGINEERING - WATRY DESIGN, INC.  
 2099 GATEWAY PLACE, SUITE 550, SAN JOSE, CA 95110  
 T. 408-392-7900

WASTE MANAGEMENT - CUNLITTLE INTERNATIONAL  
 535 NORTH BARD BLVD, STE 710 GLENDALE, CA 92103  
 T. 626-441-7700

**LEGEND**

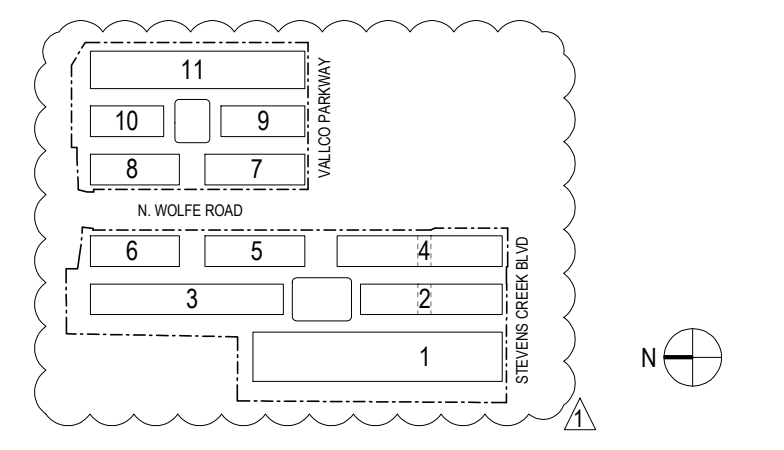
- OFFICE
- OFFICE LOBBY / AMENITY
- RESIDENTIAL
- RESIDENTIAL LOBBY / AMENITY
- RETAIL
- RETAIL LOBBY / AMENITY
- CORE / CORRIDOR
- OFFICE PARKING
- RESIDENTIAL PARKING
- RIDE SHARE (ZIP CAR)
- RETAIL PARKING
- SHARED
- E.V. PARKING
- ACCESSIBLE PARKING
- VAN ACCESSIBLE PARKING
- CENTRAL PLANT
- LOADING + TRASH
- TRASH ROOM

**NOT FOR CONSTRUCTION**

DISCLAIMER  
 THE ARCHITECT/ENGINEER SHALL HAVE NO RESPONSIBILITY FOR ANY LIABILITY, LOSS, COST, DAMAGE OR EXPENSE ARISING FROM OR RELATING TO ANY USE OF THIS DOCUMENT FOR ANY PURPOSE OTHER THAN ITS INTENDED PURPOSE ON THIS PROJECT. THIS DOCUMENT IS TO BE CONSIDERED IN CONJUNCTION WITH ALL RELATED DOCUMENTATION. ANY DISCREPANCIES IDENTIFIED IN THIS DOCUMENT MUST BE REPORTED IMMEDIATELY TO THE ARCHITECT BEFORE PROCEEDING. CONTRACTORS MUST VERIFY ALL DIMENSIONS PRIOR TO PROCEEDING WITH ANY WORK. ONLY FIGURED DIMENSIONS ARE TO BE USED FOR VERIFICATION.

**SB-35 DEVELOPMENT APPLICATION**

REV	DESCRIPTION	DATE
REV-0	SB-35 DEVELOPMENT APPLICATION	03/27/2018
REV-1	SB-35 APPLICATION REVISIONS	06/06/2018



ARCHITECTS PROJECT NUMBER: 708011

PROJECT PHASE: SB-35 DEVELOPMENT APPLICATION

IF THIS DRAWING IS NOT 36"X48" IT IS A REDUCED PRINT. REFER TO GRAPHIC SCALE.

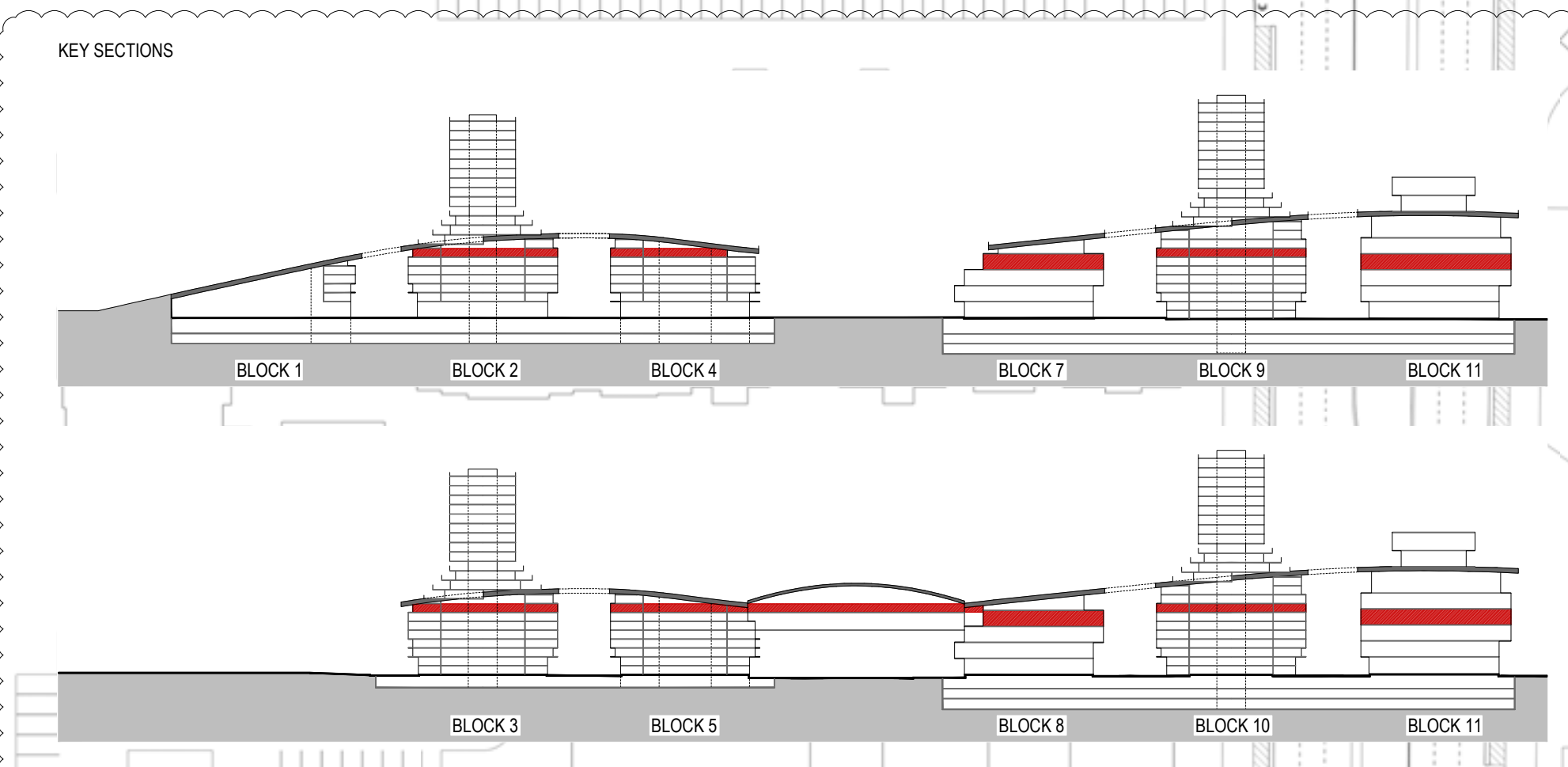
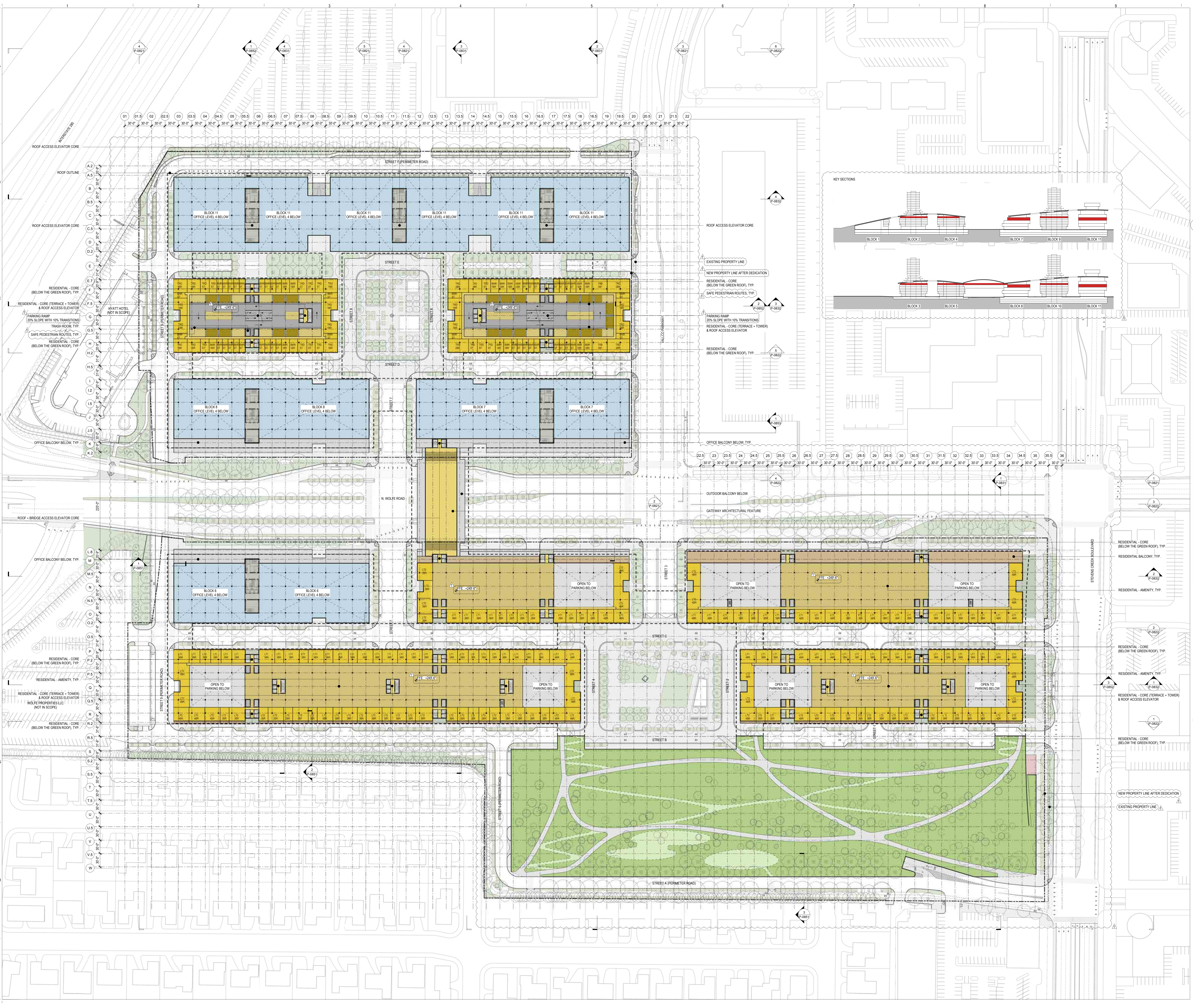


**BUILDING PLAN - FF ELEVATION @ 249'-6"**

SHEET TITLE: **P-0800.08**

SHEET NUMBER: 8 OF 10

© 2018 RAFAEL VINOLY ARCHITECTS P.C.



© 2018 RAFAEL VINOLY ARCHITECTS P.C.



# VALLCO TOWN CENTER

OWNER - VALLCO PROPERTY OWNER LLC  
965 PAGE MILL ROAD, PALO ALTO, CA 94304  
T. 650-344-1300

ARCHITECTURE - RAFAEL VINOLY ARCHITECTS  
50 VANDAM STREET, NEW YORK, NY 10013  
T. 212-924-0500

ARCHITECTURE - RAFAEL VINOLY ARCHITECTS  
1033 N. WOLFE ROAD, CUPERTINO, CA 95014  
T. 408-627-7000

LANDSCAPE ARCHITECTURE - OLIN PARTNERSHIP LTD.  
150 S. INDEPENDENCE BLVD., SUITE 1123, PHILADELPHIA, PA 19106  
T. 215-440-0030

CIVIL - SANDIS CIVIL ENGINEERS SURVEYORS PLANNERS, INC.  
1700 S. WINCHESTER BLVD., SUITE 200, CAMPELL, CA 95008  
T. 408-636-0900

TRANSPORTATION ENGINEERING - ARUP NORTH AMERICA, LTD.  
860 MISSION STREET, SUITE 700, SAN FRANCISCO, CA 94105  
T. 415-567-9445

LIGHTING - ONE LUX STUDIO  
167 JFK BLVD, SUITE 1665, PHILADELPHIA, PA 19103  
T. 215-681-1150

SIGNAGE - EXIT  
167 JFK BLVD, SUITE 1665, PHILADELPHIA, PA 19103  
T. 215-681-1150

PARKING ENGINEERING - WATRY DESIGN, INC.  
2099 GATEWAY PLACE, SUITE 550, SAN JOSE, CA 95110  
T. 408-392-7900

WASTE MANAGEMENT - CIN LITTLE INTERNATIONAL  
535 NORTH BRAND BLVD, STE 710 GLENDALE, CA 91203  
T. 626-441-7700

## LEGEND

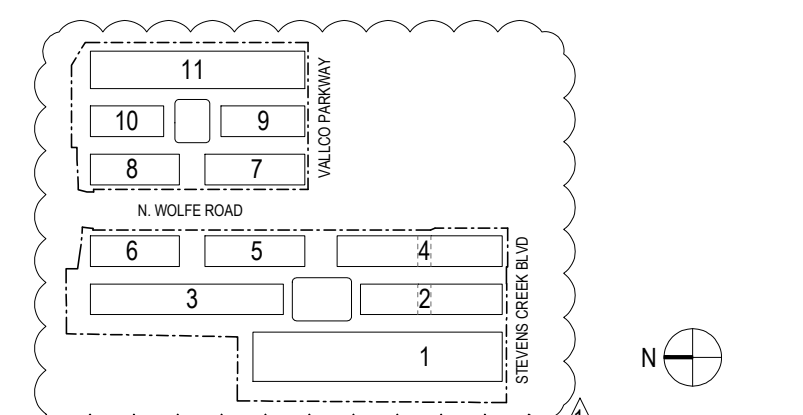
- OFFICE
- OFFICE LOBBY / AMENITY
- RESIDENTIAL
- RESIDENTIAL LOBBY / AMENITY
- RETAIL
- RETAIL LOBBY / AMENITY
- CORE / CORRIDOR
- OFFICE PARKING
- RESIDENTIAL PARKING
- RIDE SHARE (ZIP CAR)
- RETAIL PARKING
- SHARED
- E.V. PARKING
- ACCESSIBLE PARKING
- VAN ACCESSIBLE PARKING
- CENTRAL PLANT
- LOADING + TRASH
- TRASH ROOM

## NOT FOR CONSTRUCTION

DISCLAIMER  
THE ARCHITECT / ENGINEER SHALL HAVE NO RESPONSIBILITY FOR ANY LIABILITY, LOSS, COST, DAMAGE OR EXPENSE ARISING FROM OR RELATING TO ANY USE OF THIS DOCUMENT FOR ANY PURPOSE OTHER THAN ITS INTENDED PURPOSE ON THIS PROJECT. THIS DOCUMENT IS TO BE CONSIDERED IN CONNECTION WITH ALL RELATED DOCUMENTATION. ANY DISCREPANCIES IDENTIFIED IN THIS DOCUMENT MUST BE REPORTED IMMEDIATELY TO THE ARCHITECT BEFORE PROCEEDING. CONTRACTORS MUST VERIFY ALL DIMENSIONS PRIOR TO PROCEEDING WITH ANY WORK. ONLY FIGURED DIMENSIONS ARE TO BE USED FOR VERIFICATION.

## SB-35 DEVELOPMENT APPLICATION

REV	DESCRIPTION	DATE
REV-0	SB-35 DEVELOPMENT APPLICATION	03/27/2018
REV-1	SB-35 APPLICATION REVISIONS	06/06/2018



ARCHITECTS PROJECT NUMBER: 708011  
PROJECT PHASE: SB-35 DEVELOPMENT APPLICATION

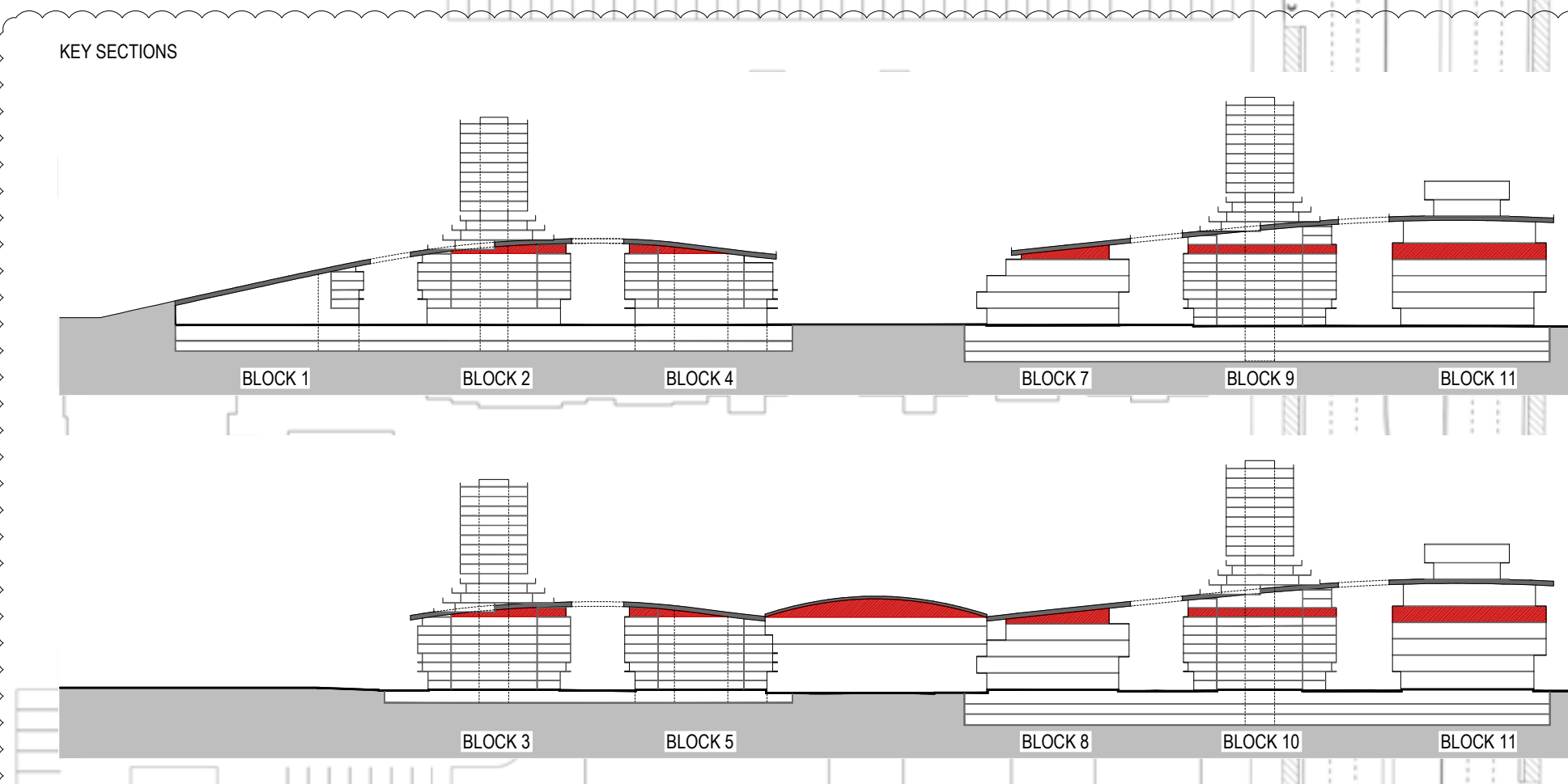
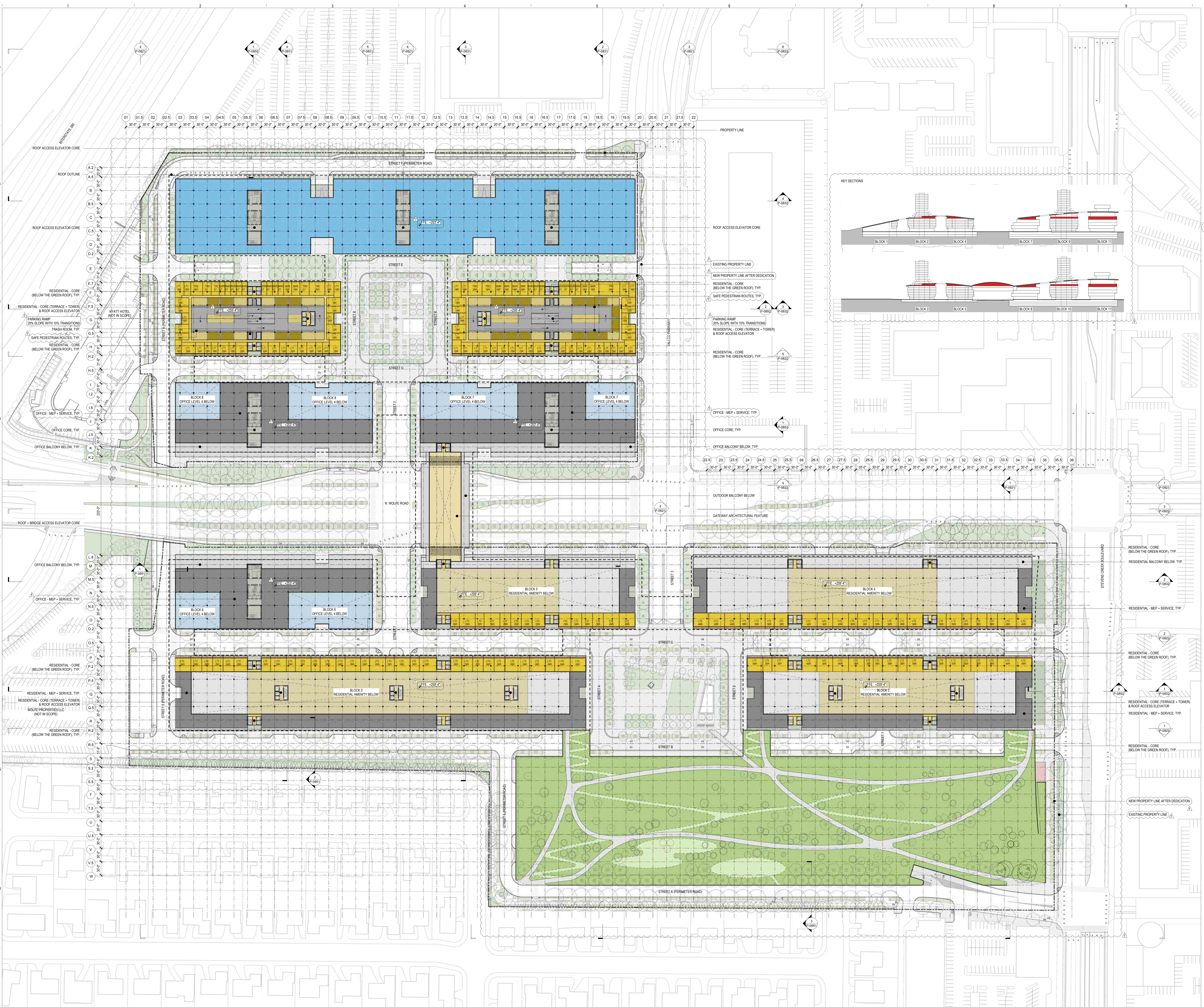
IF THIS DRAWING IS NOT 36"X48" IT IS A REDUCED PRINT. REFER TO GRAPHIC SCALE.



BUILDING PLAN - FF ELEVATION @ 259'-4"

SHEET TITLE: P-0800.09

SHEET NUMBER: © 2018 RAFAEL VINOLY ARCHITECTS P.C.





# VALLCO TOWN CENTER

OWNER - VALLCO PROPERTY OWNER LLC  
 965 PAGE MILL ROAD, PALO ALTO, CA 94304  
 T. 650-344-1500

ARCHITECTURE - RAFAEL VINOLY ARCHITECTS  
 50 VANDAM STREET, NEW YORK, NY 10013  
 T. 212-924-0500

ARCHITECTURE - RAFAEL VINOLY ARCHITECTS  
 1033 N. WOLFE ROAD, CUPERTINO, CA 95014  
 T. 408-627-7000

LANDSCAPE ARCHITECTURE - OLIN PARTNERSHIP LTD.  
 150 S. INDEPENDENCE BLVD., SUITE 1103, PHILADELPHIA, PA 19106  
 T. 215-440-0030

CIVIL - SANDIS CIVIL ENGINEERS SURVEYORS PLANNERS, INC.  
 1700 S. WINCHESTER BLVD., SUITE 200, CAMBRIDGE, CA 95908  
 T. 408-636-0900

TRANSPORTATION ENGINEERING - ARUP NORTH AMERICA, LTD.  
 560 MISSION STREET, SUITE 700, SAN FRANCISCO, CA 94105  
 T. 415-567-9445

LIGHTING - ONE LUX STUDIO  
 158 HESS 29TH STREET, 10TH FLOOR, NEW YORK, NY 10011  
 T. 212-201-6150

SIGNAGE - EXIT  
 1617 JFK BLVD, SUITE 1665, PHILADELPHIA, PA 19103  
 T. 215-661-1150

PARKING ENGINEERING - WATRY DESIGN, INC.  
 2096 GATEWAY PLACE, SUITE 550, SAN JOSE, CA 95110  
 T. 408-392-7900

WASTE MANAGEMENT - CINLITTLE INTERNATIONAL  
 535 NORTH BRAND BLVD, STE 710 GLENDALE, CA 92103  
 T. 626-441-7700

**LEGEND**

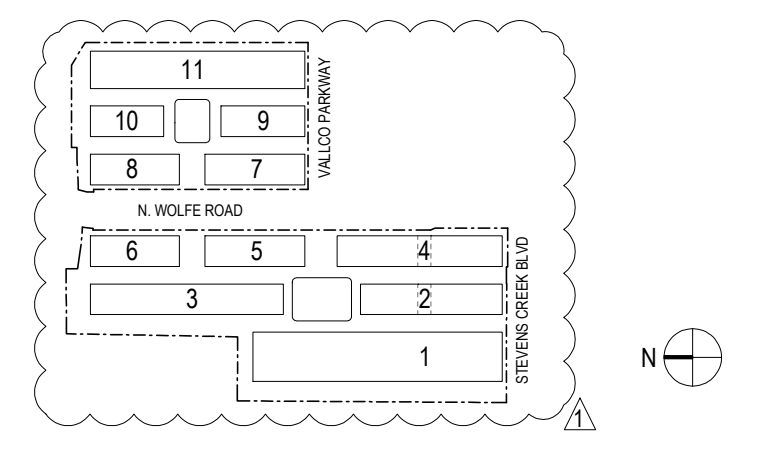
- OFFICE
- OFFICE LOBBY / AMENITY
- RESIDENTIAL
- RESIDENTIAL LOBBY / AMENITY
- RETAIL
- RETAIL LOBBY / AMENITY
- CORE / CORRIDOR
- OFFICE PARKING
- RESIDENTIAL PARKING
- RIDE SHARE (ZIP CAR)
- RETAIL PARKING
- SHARED
- E.V. PARKING
- ACCESSIBLE PARKING
- VAN ACCESSIBLE PARKING
- CENTRAL PLANT
- LOADING + TRASH
- TRASH ROOM

**NOT FOR CONSTRUCTION**

DISCLAIMER  
 THE ARCHITECT/ENGINEER SHALL HAVE NO RESPONSIBILITY FOR ANY LIABILITY, LOSS, COST, DAMAGE OR EXPENSE ARISING FROM OR RELATING TO ANY USE OF THIS DOCUMENT FOR ANY PURPOSE OTHER THAN THAT INTENDED BY THE ARCHITECT/ENGINEER. THIS DOCUMENT IS TO BE CONSIDERED IN CONJUNCTION WITH ALL RELATED DOCUMENTATION ON THIS PROJECT. ANY DISCREPANCIES IDENTIFIED IN THIS DOCUMENT MUST BE REPORTED IMMEDIATELY TO THE ARCHITECT BEFORE PROCEEDING. CONTRACTORS MUST VERIFY ALL DIMENSIONS PRIOR TO PROCEEDING WITH ANY WORK. ONLY FIGURED DIMENSIONS ARE TO BE USED FOR VERIFICATION.

**SB-35 DEVELOPMENT APPLICATION**

REV	DESCRIPTION	DATE
REV-0	SB-35 DEVELOPMENT APPLICATION	03/27/2018
REV-1	SB-35 APPLICATION REVISIONS	06/06/2018



ARCHITECTS PROJECT NUMBER: 708011

PROJECT PHASE: SB-35 DEVELOPMENT APPLICATION

IF THIS DRAWING IS NOT 36"X48" IT IS A REDUCED PRINT. REFER TO GRAPHIC SCALE.

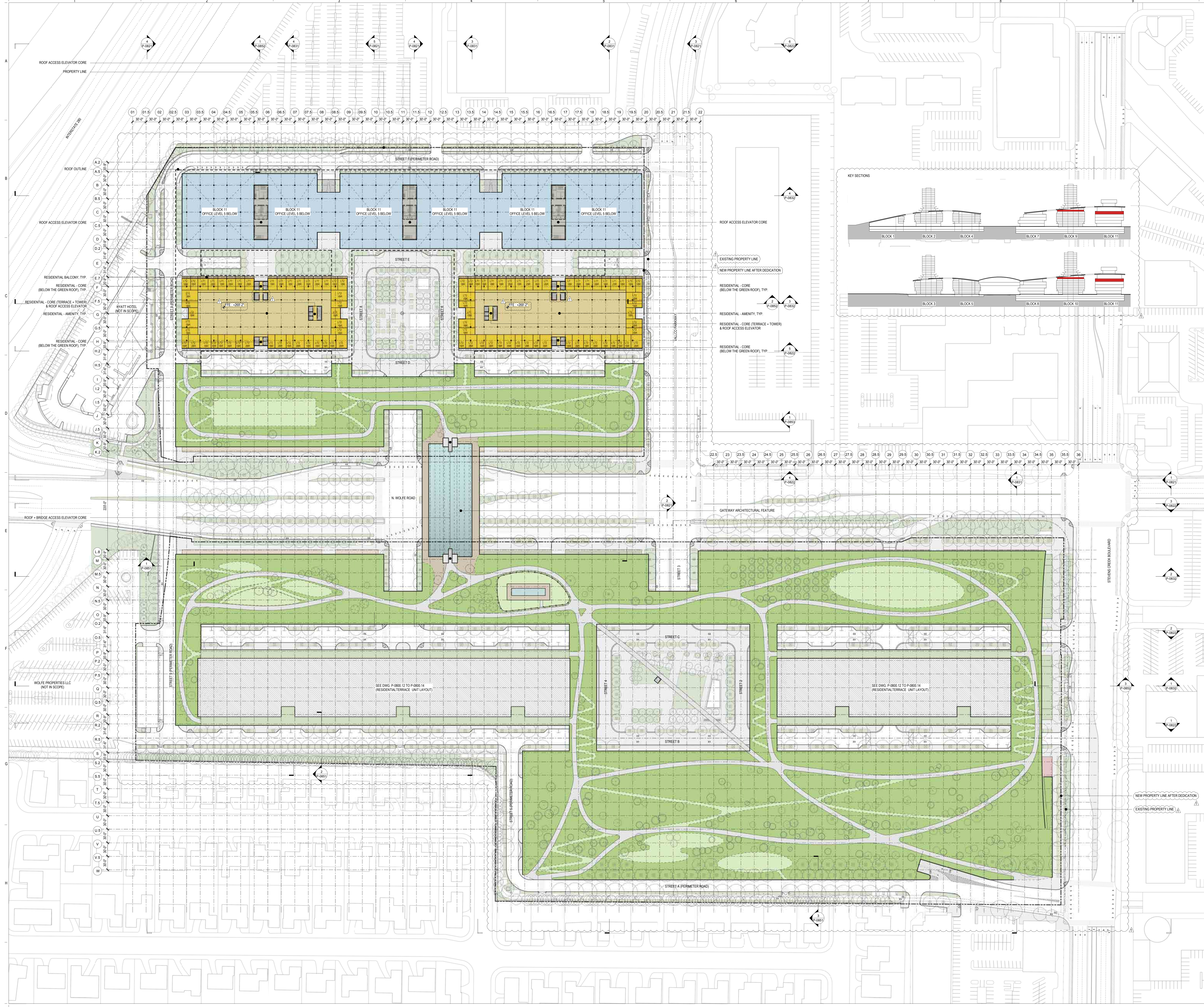


**BUILDING PLAN - FF ELEVATION @ 269'-2"**

SHEET TITLE:

**P-0800.10**

SHEET NUMBER: © 2018 RAFAEL VINOLY ARCHITECTS P.C.





# VALLCO TOWN CENTER

OWNER - VALLCO PROPERTY OWNER LLC  
 965 PAGE MILL ROAD, PALO ALTO, CA 94304  
 T. 650-344-1300

ARCHITECTURE - RAFAEL VINOLY ARCHITECTS  
 50 VANDAM STREET, NEW YORK, NY 10013  
 T. 212-924-0500

ARCHITECTURE - RAFAEL VINOLY ARCHITECTS  
 1033 N. WOLFE ROAD, CUPERTINO, CA 95014  
 T. 408-627-7000

LANDSCAPE ARCHITECTURE - OLIN PARTNERSHIP LTD.  
 150 S. INDEPENDENCE BLVD., SUITE 1103, PHILADELPHIA, PA 19106  
 T. 215-440-0030

CIVIL - SANDIS CIVIL ENGINEERS SURVEYORS PLANNERS, INC.  
 1700 S. WINCHESTER BLVD., SUITE 200, CAMPELL, CA 95008  
 T. 408-636-0900

TRANSPORTATION ENGINEERING - ARUP NORTH AMERICA, LTD.  
 560 MISSION STREET, SUITE 700, SAN FRANCISCO, CA 94105  
 T. 415-567-9445

LIGHTING - ONE LUX STUDIO  
 158 WEST 29TH STREET, 10TH FLOOR, NEW YORK, NY 10001  
 T. 212-205-6750

SIGNAGE - EXIT  
 1617 JPK BLVD, SUITE 1665, PHILADELPHIA, PA 19103  
 T. 215-681-1150

PARKING ENGINEERING - WATRY DESIGN, INC.  
 2099 GATEWAY PLACE, SUITE 550, SAN JOSE, CA 95110  
 T. 408-392-7900

WASTE MANAGEMENT - CINLITTLE INTERNATIONAL  
 535 NORTH BRAND BLVD, STE 710 GLENDALE, CA 92133  
 T. 626-441-7700

**LEGEND**

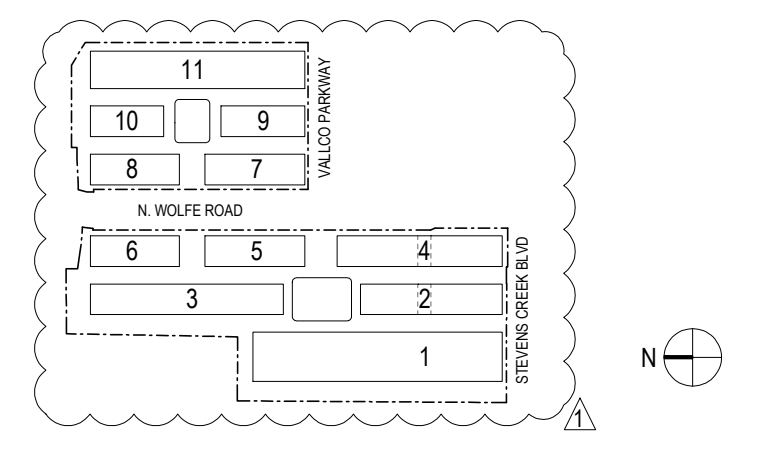
- OFFICE
- OFFICE LOBBY / AMENITY
- RESIDENTIAL
- RESIDENTIAL LOBBY / AMENITY
- RETAIL
- RETAIL LOBBY / AMENITY
- CORE / CORRIDOR
- OFFICE PARKING
- RESIDENTIAL PARKING
- RIDE SHARE (ZIP CAR)
- RETAIL PARKING
- SHARED
- E.V. PARKING
- ACCESSIBLE PARKING
- VAN ACCESSIBLE PARKING
- CENTRAL PLANT
- LOADING + TRASH
- TRASH ROOM

**NOT FOR CONSTRUCTION**

DISCLAIMER  
 THE ARCHITECT / ENGINEER SHALL HAVE NO RESPONSIBILITY FOR ANY LIABILITY, LOSS, COST, DAMAGE OR EXPENSE ARISING FROM OR RELATING TO ANY USE OF THIS DOCUMENT FOR ANY PURPOSE OTHER THAN THAT INTENDED BY THE ARCHITECT / ENGINEER. THIS DOCUMENT IS TO BE CONSIDERED IN CONJUNCTION WITH ALL RELATED DOCUMENTATION ON THIS PROJECT. ANY DISCREPANCIES IDENTIFIED IN THIS DOCUMENT MUST BE REPORTED IMMEDIATELY TO THE ARCHITECT BEFORE PROCEEDING. CONTRACTORS MUST VERIFY ALL DIMENSIONS PRIOR TO PROCEEDING WITH ANY WORK. ONLY FIGURED DIMENSIONS ARE TO BE USED FOR VERIFICATION.

**SB-35 DEVELOPMENT APPLICATION**

REV	DESCRIPTION	DATE
REV-0	SB-35 DEVELOPMENT APPLICATION	03/27/2018
REV-1	SB-35 APPLICATION REVISIONS	06/06/2018

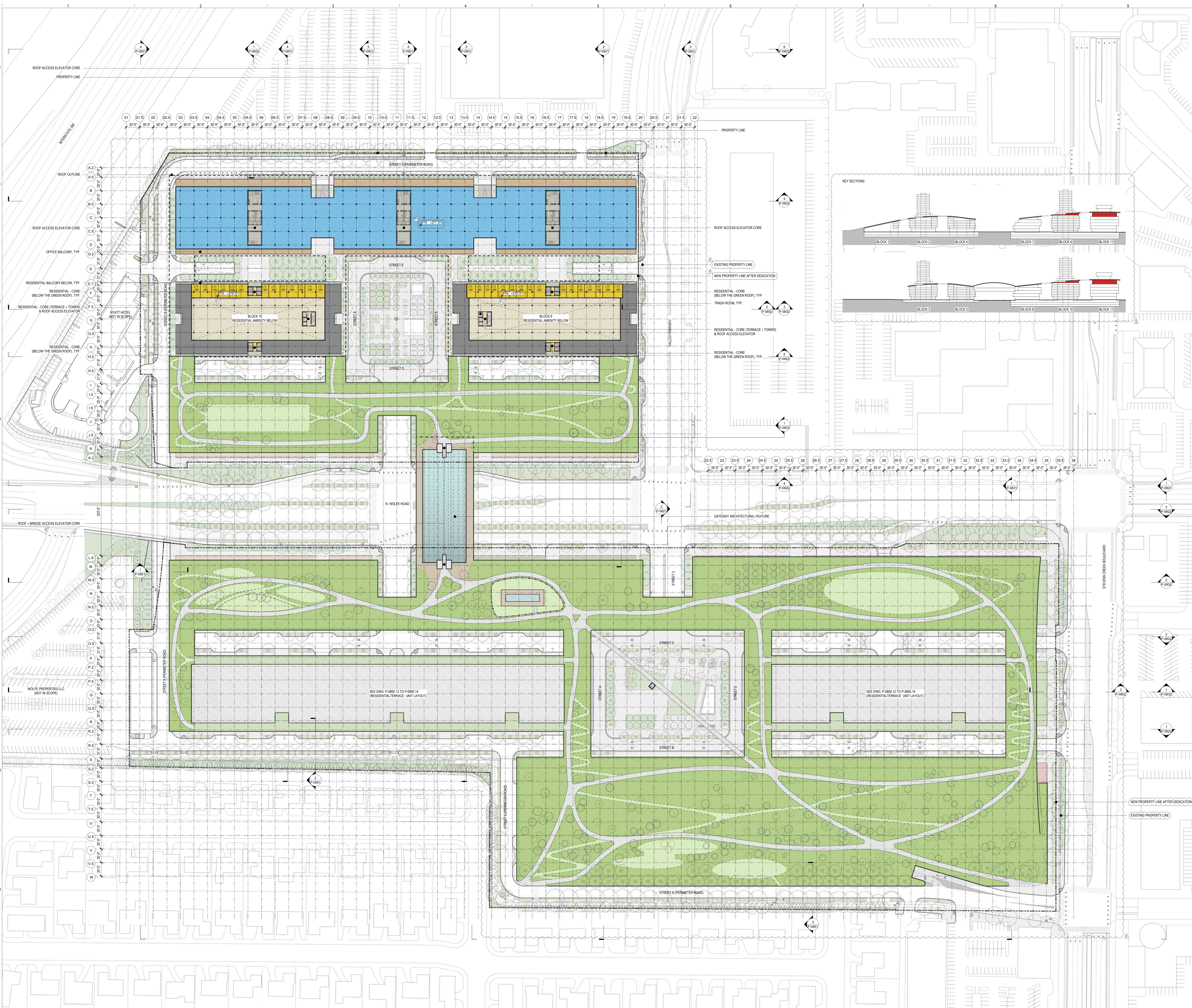


ARCHITECTS PROJECT NUMBER: 708011  
 PROJECT PHASE: SB-35 DEVELOPMENT APPLICATION  
 IF THIS DRAWING IS NOT 36"X48" IT IS A REDUCED PRINT. REFER TO GRAPHIC SCALE.

SCALE: 1/8"=1'-0"

**BUILDING PLAN - FF ELEVATION @ 279'-0"**

SHEET TITLE:  
**P-0800.11**  
 SHEET NUMBER:  
 © 2018 RAFAEL VINOLY ARCHITECTS PCL





# VALLCO TOWN CENTER

OWNER - VALLCO PROPERTY OWNER LLC  
 965 PAGE MILL ROAD, PALO ALTO, CA 94304  
 T. 650-344-1300

ARCHITECTURE - RAFAEL VINOY ARCHITECTS  
 50 VANDAM STREET, NEW YORK, NY 10013  
 T. 212-924-0500

ARCHITECTURE - RAFAEL VINOY ARCHITECTS  
 1033 N. WOLFE ROAD, CUPERTINO, CA 95014  
 T. 408-627-7000

LANDSCAPE ARCHITECTURE - OLIN PARTNERSHIP LTD.  
 150 S. WINDHAMER BLVD., SUITE 200, CAMPBELL, CA 95008  
 T. 214-440-0030

CIVIL - SANDIS CIVIL ENGINEERS SURVEYORS PLANNERS, INC.  
 1700 S. WINDHAMER BLVD., SUITE 200, CAMPBELL, CA 95008  
 T. 408-636-0900

TRANSPORTATION ENGINEERING - ARUP NORTH AMERICA, LTD.  
 560 MISSION STREET, SUITE 700, SAN FRANCISCO, CA 94105  
 T. 415-567-9445

LIGHTING - ONE LUX STUDIO  
 158 HESS 29TH STREET, 10TH FLOOR, NEW YORK, NY 10011  
 T. 212-201-6750

SIGNAGE - EXIT  
 1617 JFK BLVD, SUITE 1665, PHILADELPHIA, PA 19103  
 T. 215-681-1156

PARKING ENGINEERING - WATRY DESIGN, INC.  
 2099 GATEWAY PLACE, SUITE 550, SAN JOSE, CA 95110  
 T. 408-392-7900

WASTE MANAGEMENT - CINLITTLE INTERNATIONAL  
 535 NORTH BRAND BLVD, STE 710 GLENDALE, CA 92103  
 T. 626-441-7700

**LEGEND**

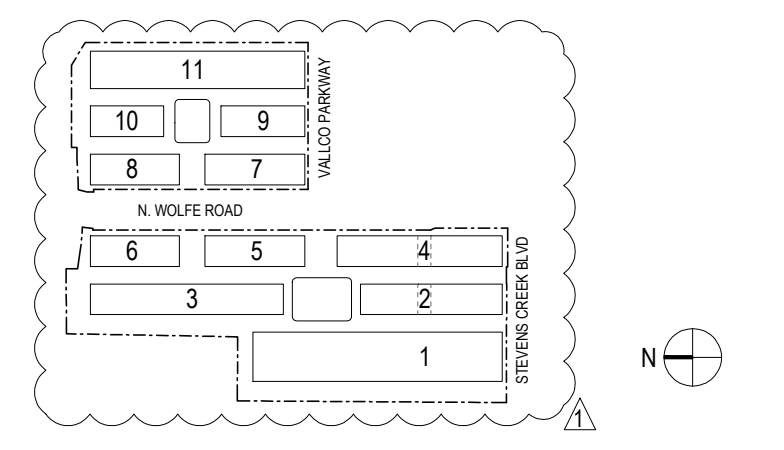
- OFFICE
- OFFICE LOBBY / AMENITY
- RESIDENTIAL
- RESIDENTIAL LOBBY / AMENITY
- RETAIL
- RETAIL LOBBY / AMENITY
- CORE / CORRIDOR
- OFFICE PARKING
- RESIDENTIAL PARKING
- RIDE SHARE (ZIP CAR)
- RETAIL PARKING
- SHARED
- E.V. PARKING
- ACCESSIBLE PARKING
- VAN ACCESSIBLE PARKING
- CENTRAL PLANT
- LOADING + TRASH
- TRASH ROOM

**NOT FOR CONSTRUCTION**

DISCLAIMER  
 THE ARCHITECT/ENGINEER SHALL HAVE NO RESPONSIBILITY FOR ANY LIABILITY, LOSS, COST, DAMAGE OR EXPENSE ARISING FROM OR RELATING TO ANY USE OF THIS DOCUMENT FOR ANY PURPOSE OTHER THAN THAT INTENDED BY THE ARCHITECT/ENGINEER. THIS DOCUMENT IS TO BE CONSIDERED IN CONNECTION WITH ALL RELATED DOCUMENTATION ON THIS PROJECT. ANY DISCREPANCIES IDENTIFIED IN THIS DOCUMENT MUST BE REPORTED IMMEDIATELY TO THE ARCHITECT BEFORE PROCEEDING. CONTRACTORS MUST VERIFY ALL DIMENSIONS PRIOR TO PROCEEDING WITH ANY WORK. ONLY FIGURED DIMENSIONS ARE TO BE USED FOR VERIFICATION.

**SB-35 DEVELOPMENT APPLICATION**

REV	DESCRIPTION	DATE
REV-0	SB-35 DEVELOPMENT APPLICATION	03/27/2018
REV-1	SB-35 APPLICATION REVISIONS	06/06/2018

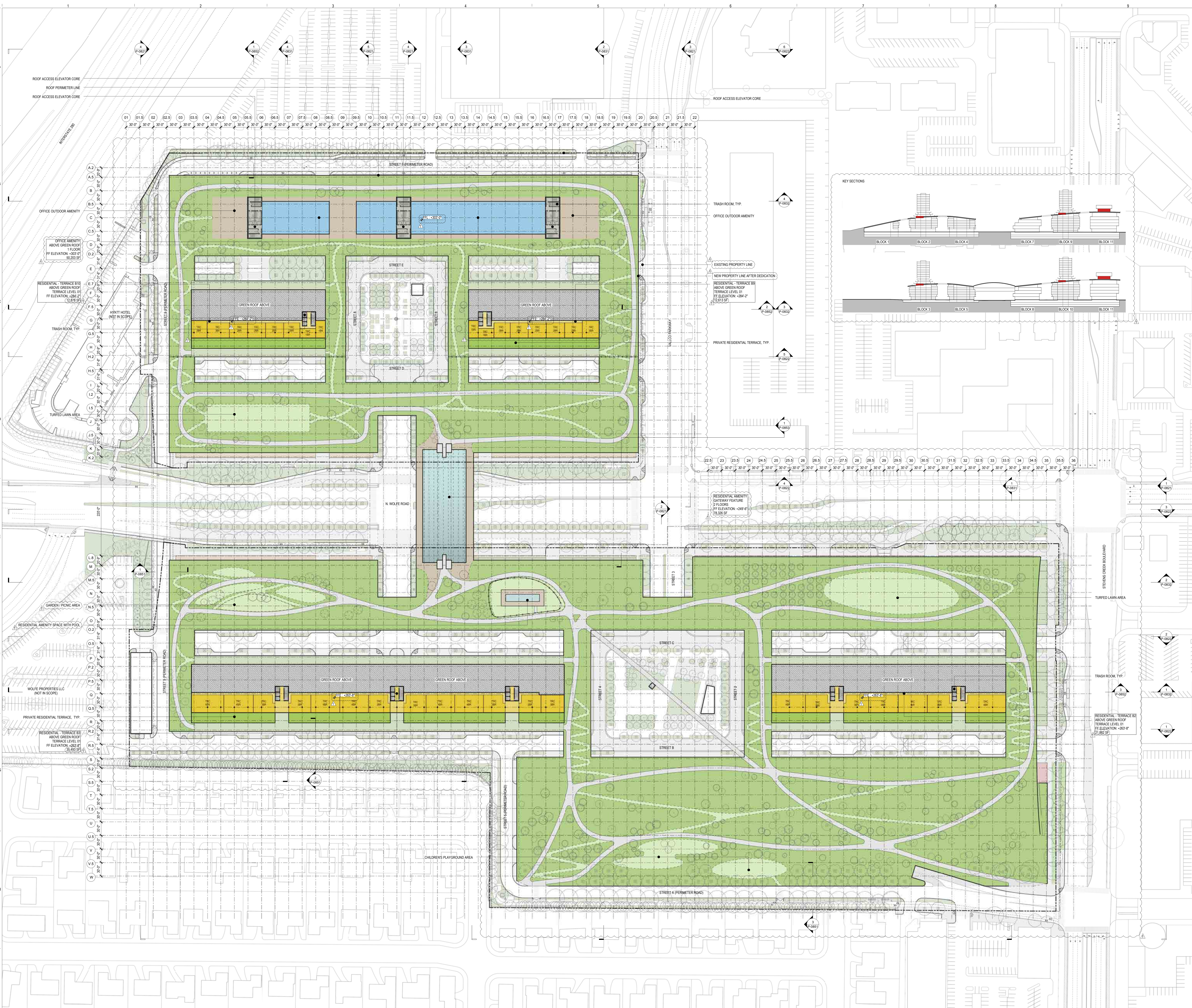


ARCHITECTS PROJECT NUMBER: 708011  
 PROJECT PHASE: SB-35 DEVELOPMENT APPLICATION  
 IF THIS DRAWING IS NOT 36" x 48" IT IS A REDUCED PRINT. REFER TO GRAPHIC SCALE.

SCALE: 1/8" = 1'-0"

**BUILDING PLAN - GREEN ROOF PLAN - TERRACE LEVEL 01**

SHEET TITLE:  
**P-0800.12**  
 SHEET NUMBER:  
 © 2018 RAFAEL VINOY ARCHITECTS P.C.





# VALLCO TOWN CENTER

OWNER - VALLCO PROPERTY OWNER LLC  
 965 PAGE MILL ROAD, PALO ALTO, CA 94304  
 T. 650-344-1300

ARCHITECTURE - RAFAEL VINOLY ARCHITECTS  
 50 VANDAM STREET, NEW YORK, NY 10013  
 T. 212-924-0500

ARCHITECTURE - RAFAEL VINOLY ARCHITECTS  
 1033 N. WOLFE ROAD, CUPERTINO, CA 95014  
 T. 408-627-7000

LANDSCAPE ARCHITECTURE - OLIN PARTNERSHIP LTD.  
 102 S. INDEPENDENCE BLVD., SUITE 1103, PHILADELPHIA, PA 19106  
 T. 215-440-0030

CIVIL - SANDIS CIVIL ENGINEERS SURVEYORS PLANNERS, INC.  
 1700 S. WINCHESTER BLVD., SUITE 200, CAMPBELL, CA 95008  
 T. 408-636-0900

TRANSPORTATION ENGINEERING - ARUP NORTH AMERICA, LTD.  
 560 MISSION STREET, SUITE 700, SAN FRANCISCO, CA 94105  
 T. 415-567-9445

LIGHTING - ONE LUX STUDIO  
 158 WEST 29TH STREET, 10TH FLOOR, NEW YORK, NY 10001  
 T. 212-201-6750

SIGNAGE - EXIT  
 1617 JFK BLVD, SUITE 1665, PHILADELPHIA, PA 19103  
 T. 215-641-1150

PARKING ENGINEERING - WATRY DESIGN, INC.  
 2099 GATEWAY PLACE, SUITE 550, SAN JOSE, CA 95110  
 T. 408-392-7900

WASTE MANAGEMENT - CINLITTLE INTERNATIONAL  
 535 NORTH BRAND BLVD, STE 710 GLENDALE, CA 92103  
 T. 626-441-7700

## LEGEND

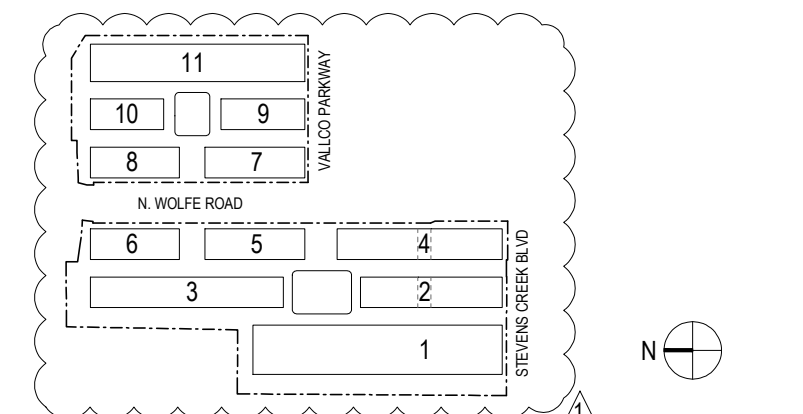
- OFFICE
- OFFICE LOBBY / AMENITY
- RESIDENTIAL
- RESIDENTIAL LOBBY / AMENITY
- RETAIL
- RETAIL LOBBY / AMENITY
- CORE / CORRIDOR
- OFFICE PARKING
- RESIDENTIAL PARKING
- RIDE SHARE (ZIP CAR)
- RETAIL PARKING
- SHARED
- E.V. PARKING
- ACCESSIBLE PARKING
- VAN ACCESSIBLE PARKING
- CENTRAL PLANT
- LOADING + TRASH
- TRASH ROOM

## NOT FOR CONSTRUCTION

DISCLAIMER  
 THE ARCHITECT/ENGINEER SHALL HAVE NO RESPONSIBILITY FOR ANY LIABILITY, LOSS, COST, DAMAGE OR EXPENSE ARISING FROM OR RELATING TO ANY USE OF THIS DOCUMENT FOR ANY PURPOSE OTHER THAN ITS INTENDED PURPOSE ON THIS PROJECT. THIS DOCUMENT IS TO BE CONSIDERED IN CONJUNCTION WITH ALL RELATED DOCUMENTATION. ANY DISCREPANCIES IDENTIFIED IN THIS DOCUMENT MUST BE REPORTED IMMEDIATELY TO THE ARCHITECT BEFORE PROCEEDING. CONTRACTORS MUST VERIFY ALL DIMENSIONS PRIOR TO PROCEEDING WITH ANY WORK. ONLY FIGURED DIMENSIONS ARE TO BE USED FOR VERIFICATION.

## SB-35 DEVELOPMENT APPLICATION

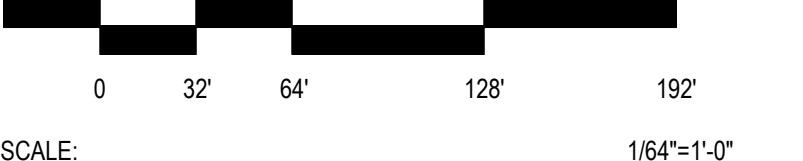
REV	DESCRIPTION	DATE
REV-0	SB-35 DEVELOPMENT APPLICATION	03/27/2018
REV-1	SB-35 APPLICATION REVISIONS	06/06/2018



ARCHITECTS PROJECT NUMBER: 708011

PROJECT PHASE: SB-35 DEVELOPMENT APPLICATION

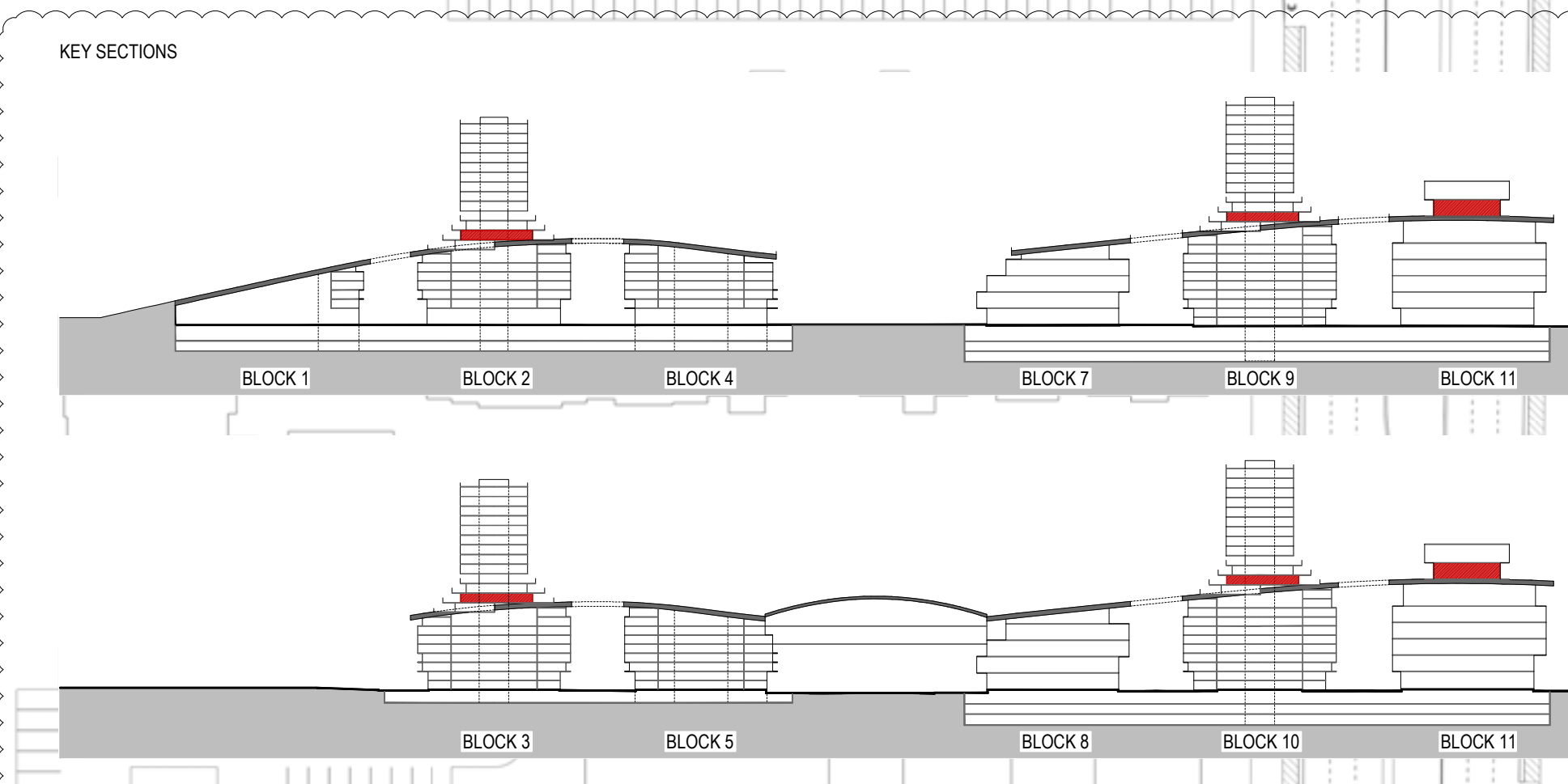
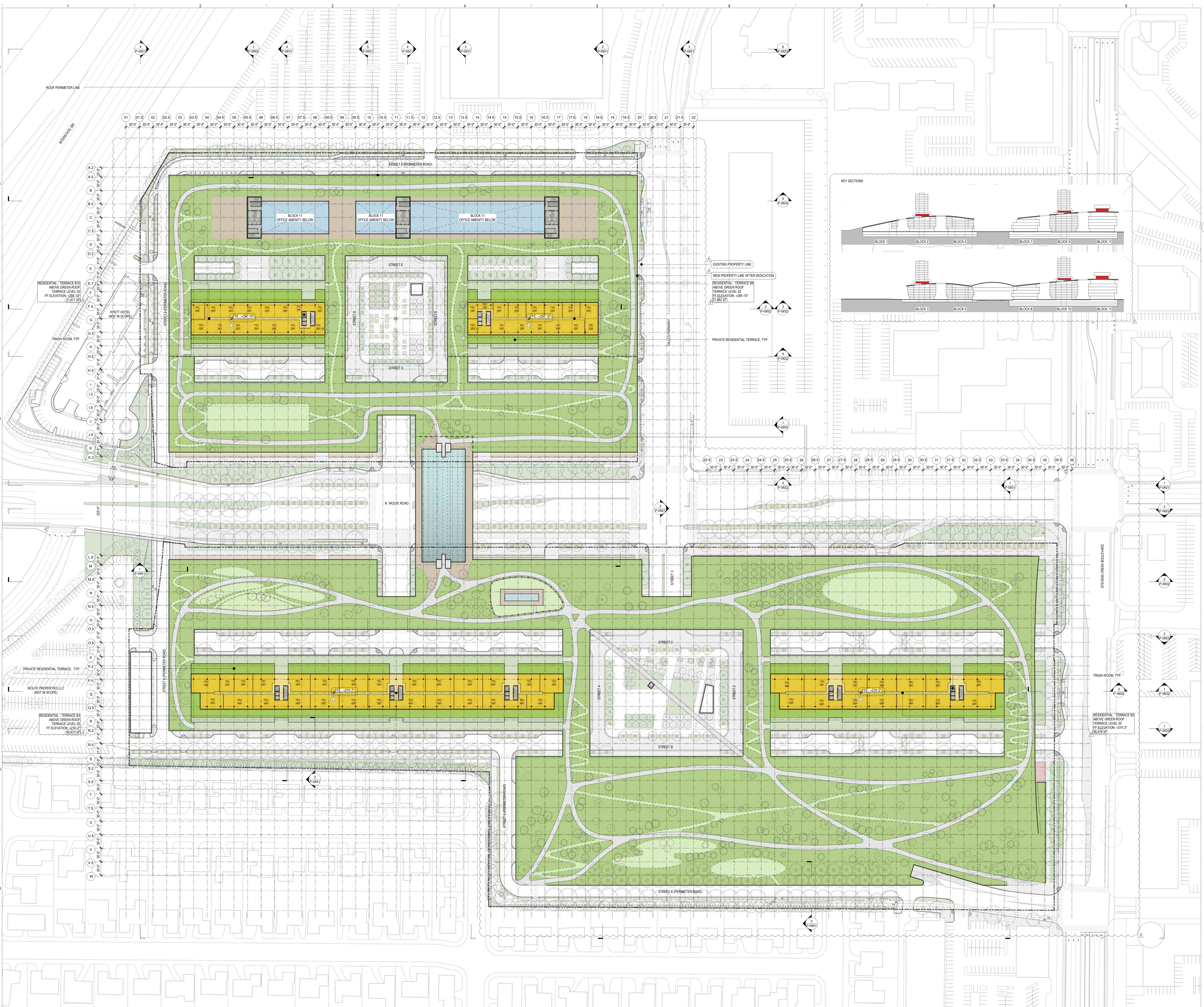
IF THIS DRAWING IS NOT 36"X48" IT IS A REDUCED PRINT. REFER TO GRAPHIC SCALE.



BUILDING PLAN - GREEN ROOF  
 PLAN - TERRACE LEVEL 02

SHEET TITLE: P-0800.13

SHEET NUMBER: © 2018 RAFAEL VINOLY ARCHITECTS PCL





# VALLCO TOWN CENTER

OWNER - VALLCO PROPERTY OWNER LLC  
 965 PAGE MILL ROAD, PALO ALTO, CA 94304  
 T. 650-344-1300

ARCHITECTURE - RAFAEL VINOLY ARCHITECTS  
 50 VANDAM STREET, NEW YORK, NY 10013  
 T. 212-924-0500

ARCHITECTURE - RAFAEL VINOLY ARCHITECTS  
 1033 N. WOLFE ROAD, CUPERTINO, CA 95014  
 T. 408-627-7000

LANDSCAPE ARCHITECTURE - OLIN PARTNERSHIP LTD.  
 150 S. INDEPENDENCE BLVD., SUITE 200, CAMPSVILLE, PA 19106  
 T. 215-440-0030

CIVIL - SANDIS CIVIL ENGINEERS SURVEYORS PLANNERS, INC.  
 1700 S. WINCHESTER BLVD., SUITE 200, CAMPBELL, CA 95008  
 T. 408-636-0900

TRANSPORTATION ENGINEERING - ARUP NORTH AMERICA, LTD.  
 560 MISSION STREET, SUITE 700, SAN FRANCISCO, CA 94105  
 T. 415-567-9445

LIGHTING - ONE LUX STUDIO  
 158 WEST 29TH STREET, 10TH FLOOR, NEW YORK, NY 10001  
 T. 212-201-6750

SIGNAGE - EXIT  
 1617 JPK BLVD, SUITE 1665, PHILADELPHIA, PA 19103  
 T. 215-641-1150

PARKING ENGINEERING - WATRY DESIGN, INC.  
 2099 GATEWAY PLACE, SUITE 550, SAN JOSE, CA 95110  
 T. 408-392-7300

WASTE MANAGEMENT - CINLITTLE INTERNATIONAL  
 535 NORTH BRAND BLVD, STE 710 GLENDALE, CA 92103  
 T. 626-441-7700

## LEGEND

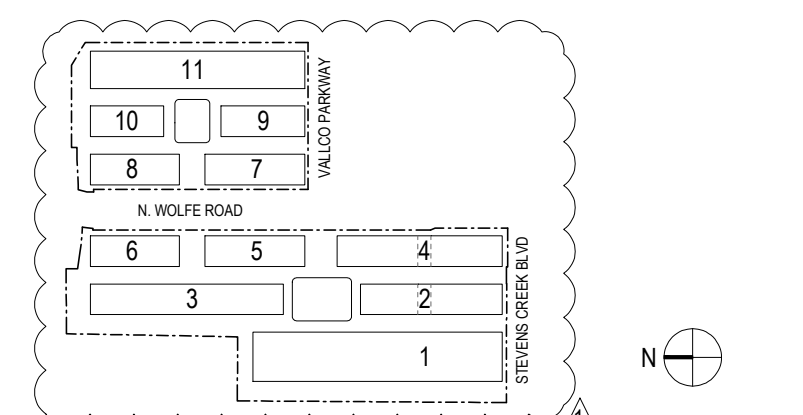
- OFFICE
- OFFICE LOBBY / AMENITY
- RESIDENTIAL
- RESIDENTIAL LOBBY / AMENITY
- RETAIL
- RETAIL LOBBY / AMENITY
- CORE / CORRIDOR
- OFFICE PARKING
- RESIDENTIAL PARKING
- RIDE SHARE (ZIP CAR)
- RETAIL PARKING
- SHARED
- E.V. PARKING
- ACCESSIBLE PARKING
- VAN ACCESSIBLE PARKING
- CENTRAL PLANT
- LOADING + TRASH
- TRASH ROOM

## NOT FOR CONSTRUCTION

DISCLAIMER  
 THE ARCHITECT/ENGINEER SHALL HAVE NO RESPONSIBILITY FOR ANY LIABILITY, LOSS, COST, DAMAGE OR EXPENSE ARISING FROM OR RELATING TO ANY USE OF THIS DOCUMENT FOR ANY PURPOSE OTHER THAN ITS INTENDED PURPOSE ON THIS PROJECT. THIS DOCUMENT IS TO BE CONSIDERED IN CONJUNCTION WITH ALL RELATED DOCUMENTATION ON ANY DISCREPANCIES IDENTIFIED IN THIS DOCUMENT MUST BE REPORTED IMMEDIATELY TO THE ARCHITECT BEFORE PROCEEDING. CONTRACTORS MUST VERIFY ALL DIMENSIONS PRIOR TO PROCEEDING WITH ANY WORK. ONLY FIGURED DIMENSIONS ARE TO BE USED FOR VERIFICATION.

## SB-35 DEVELOPMENT APPLICATION

REV	DESCRIPTION	DATE
REV-0	SB-35 DEVELOPMENT APPLICATION	03/27/2018
REV-1	SB-35 APPLICATION REVISIONS	06/06/2018



KEY PLAN AND NORTH ARROW

ARCHITECTS PROJECT NUMBER 708011

PROJECT PHASE SB-35 DEVELOPMENT APPLICATION

IF THIS DRAWING IS NOT 36"x48" IT IS A REDUCED PRINT. REFER TO GRAPHIC SCALE.



SCALE 1/8"=1'-0"

BUILDING PLAN - GREEN ROOF PLAN - TERRACE LEVEL 03

SHEET TITLE

P-0800.14

SHEET NUMBER

© 2018 RAFAEL VINOLY ARCHITECTS P.C.



# VALLCO TOWN CENTER

OWNER - VALLCO PROPERTY OWNER LLC  
 965 PAGE MILL ROAD, PALO ALTO, CA 94304  
 T. 650-344-1300

ARCHITECTURE - RAFAEL VINOLY ARCHITECTS  
 50 VANDAM STREET, NEW YORK, NY 10013  
 T. 212-924-0500

ARCHITECTURE - RAFAEL VINOLY ARCHITECTS  
 1033 N. WOLFE ROAD, CUPERTINO, CA 95014  
 T. 408-627-7000

LANDSCAPE ARCHITECTURE - OLIN PARTNERSHIP LTD.  
 150 S. INDEPENDENCE MALL, SUITE 1103, PHILADELPHIA, PA 19106  
 T. 215-440-0030

CIVIL - SANDIS CIVIL ENGINEERS SURVEYORS PLANNERS, INC.  
 1700 S. WINCHESTER BLVD., SUITE 200, CAMPBELL, CA 95008  
 T. 408-636-0900

TRANSPORTATION ENGINEERING - ARUP NORTH AMERICA, LTD.  
 560 MISSION STREET, SUITE 700, SAN FRANCISCO, CA 94105  
 T. 415-567-9445

LIGHTING - ONE LUX STUDIO  
 158 WEST 29TH STREET, 10TH FLOOR, NEW YORK, NY 10001  
 T. 212-201-6750

SIGNAGE - EXIT  
 1617 JPK BLVD, SUITE 1665, PHILADELPHIA, PA 19103  
 T. 215-641-1150

PARKING ENGINEERING - WATRY DESIGN, INC.  
 2099 GATEWAY PLACE, SUITE 550, SAN JOSE, CA 95110  
 T. 408-392-7300

WASTE MANAGEMENT - CINLITTLE INTERNATIONAL  
 535 NORTH BRAND BLVD, STE 710 GLENDALE, CA 92103  
 T. 626-441-7700

## LEGEND

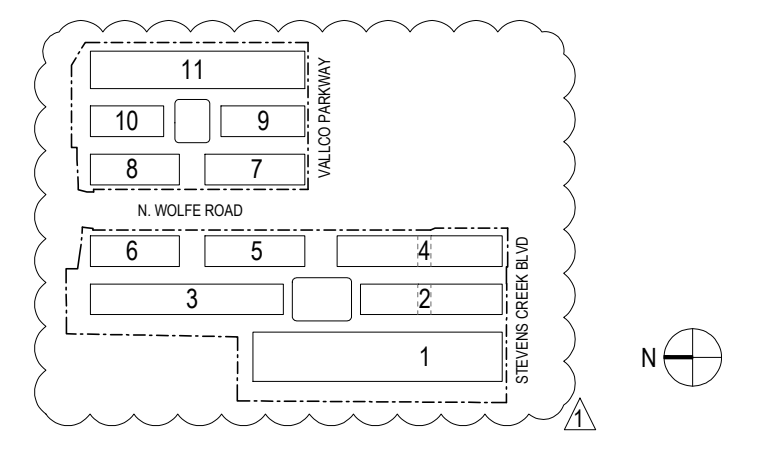
- OFFICE
- OFFICE LOBBY / AMENITY
- RESIDENTIAL
- RESIDENTIAL LOBBY / AMENITY
- RETAIL
- RETAIL LOBBY / AMENITY
- CORE / CORRIDOR
- OFFICE PARKING
- RESIDENTIAL PARKING
- RIDE SHARE (ZIP CAR)
- RETAIL PARKING
- SHARED
- E.V. PARKING
- ACCESSIBLE PARKING
- VAN ACCESSIBLE PARKING
- CENTRAL PLANT
- LOADING + TRASH
- TRASH ROOM

## NOT FOR CONSTRUCTION

DISCLAIMER  
 THE ARCHITECT / ENGINEER SHALL HAVE NO RESPONSIBILITY FOR ANY LIABILITY, LOSS, COST, DAMAGE OR EXPENSE ARISING FROM OR RELATING TO ANY USE OF THIS DOCUMENT FOR ANY PURPOSE OTHER THAN ITS INTENDED PURPOSE ON THIS PROJECT. THIS DOCUMENT IS TO BE CONSIDERED IN CONJUNCTION WITH ALL RELATED DOCUMENTATION. ANY DISCREPANCIES IDENTIFIED IN THIS DOCUMENT MUST BE REPORTED IMMEDIATELY TO THE ARCHITECT BEFORE PROCEEDING. CONTRACTORS MUST VERIFY ALL DIMENSIONS PRIOR TO PROCEEDING WITH ANY WORK. ONLY FIGURED DIMENSIONS ARE TO BE USED FOR VERIFICATION.

## SB-35 DEVELOPMENT APPLICATION

REV	DESCRIPTION	DATE
REV-0	SB-35 DEVELOPMENT APPLICATION	03/27/2018
REV-1	SB-35 APPLICATION REVISIONS	06/06/2018



ARCHITECTS PROJECT NUMBER: 708011

PROJECT PHASE: SB-35 DEVELOPMENT APPLICATION

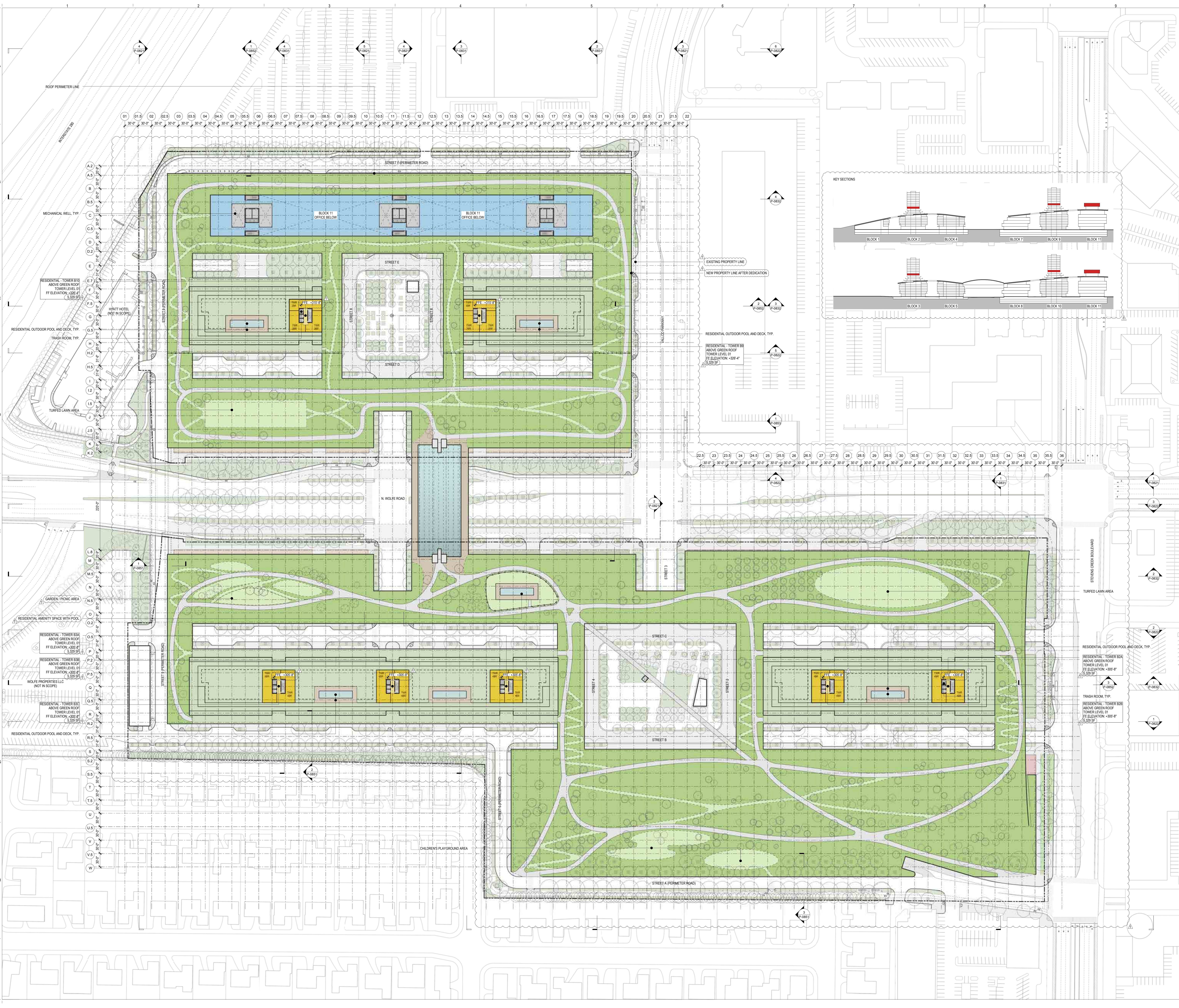
IF THIS DRAWING IS NOT 36"X48" IT IS A REDUCED PRINT. REFER TO GRAPHIC SCALE.



BUILDING PLAN - GREEN ROOF  
 PLAN - TOWER LEVEL 01

SHEET NUMBER: **P-0800.15**

© 2018 RAFAEL VINOLY ARCHITECTS P.C.





# VALLCO TOWN CENTER

OWNER - VALLCO PROPERTY OWNER LLC  
 965 PAGE MILL ROAD, PALO ALTO, CA 94304  
 T. 650-344-1300

ARCHITECTURE - RAFAEL VINOLY ARCHITECTS  
 50 VANDAM STREET, NEW YORK, NY 10013  
 T. 212-924-0500

ARCHITECTURE - RAFAEL VINOLY ARCHITECTS  
 1033 N. WOLFE ROAD, CUPERTINO, CA 95014  
 T. 408-627-7000

LANDSCAPE ARCHITECTURE - OLIN PARTNERSHIP LTD.  
 150 S. INDEPENDENCE MALL, SUITE 1103, PHILADELPHIA, PA 19106  
 T. 215-440-0030

CIVIL - SANDIS CIVIL ENGINEERS SURVEYORS PLANNERS, INC.  
 1700 S. WINCHESTER BLVD., SUITE 200, CAMPBELL, CA 95008  
 T. 408-636-0900

TRANSPORTATION ENGINEERING - ARUP NORTH AMERICA, LTD.  
 560 MISSION STREET, SUITE 700, SAN FRANCISCO, CA 94105  
 T. 415-567-9445

LIGHTING - ONE LUX STUDIO  
 158 WEST 29TH STREET, 10TH FLOOR, NEW YORK, NY 10001  
 T. 212-201-6750

SIGNAGE - EXIT  
 1617 JPK BLVD, SUITE 1665, PHILADELPHIA, PA 19103  
 T. 215-661-1950

PARKING ENGINEERING - WATRY DESIGN, INC.  
 2099 GATEWAY PLACE, SUITE 550, SAN JOSE, CA 95110  
 T. 408-392-7900

WASTE MANAGEMENT - CINLITTLE INTERNATIONAL  
 535 NORTH BRAND BLVD, STE 710 GLENDALE, CA 92033  
 T. 626-441-7700

## LEGEND

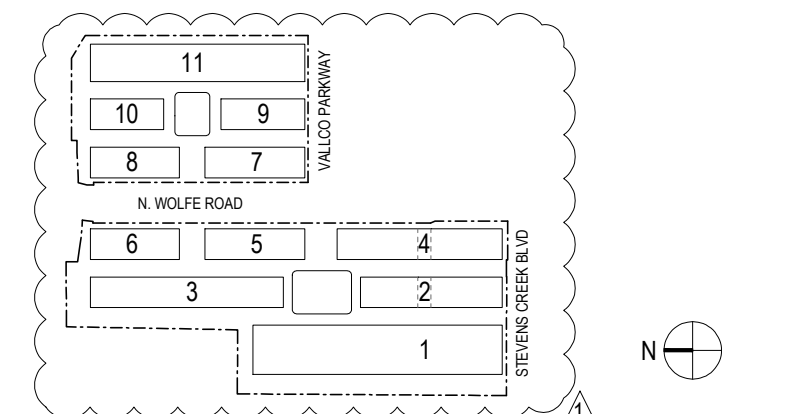
- OFFICE
- OFFICE LOBBY / AMENITY
- RESIDENTIAL
- RESIDENTIAL LOBBY / AMENITY
- RETAIL
- RETAIL LOBBY / AMENITY
- CORE / CORRIDOR
- OFFICE PARKING
- RESIDENTIAL PARKING
- RIDE SHARE (ZIP CAR)
- RETAIL PARKING
- SHARED
- E.V. PARKING
- ACCESSIBLE PARKING
- VAN ACCESSIBLE PARKING
- CENTRAL PLANT
- LOADING + TRASH
- TRASH ROOM

## NOT FOR CONSTRUCTION

DISCLAIMER  
 THE ARCHITECT/ENGINEER SHALL HAVE NO RESPONSIBILITY FOR ANY LIABILITY, LOSS, COST, DAMAGE OR EXPENSE ARISING FROM OR RELATING TO ANY USE OF THIS DOCUMENT FOR ANY PURPOSE OTHER THAN ITS INTENDED PURPOSE ON THIS PROJECT. THIS DOCUMENT IS TO BE CONSIDERED IN CONJUNCTION WITH ALL RELATED DOCUMENTATION. ANY DISCREPANCIES IDENTIFIED IN THIS DOCUMENT MUST BE REPORTED IMMEDIATELY TO THE ARCHITECT BEFORE PROCEEDING. CONTRACTORS MUST VERIFY ALL DIMENSIONS PRIOR TO PROCEEDING WITH ANY WORK. ONLY FIGURED DIMENSIONS ARE TO BE USED FOR VERIFICATION.

## SB-35 DEVELOPMENT APPLICATION

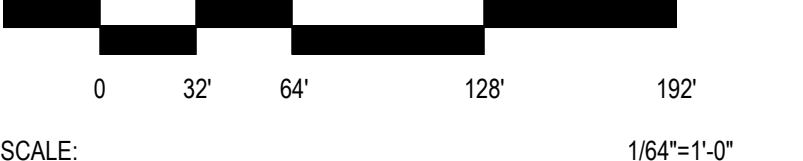
REV	DESCRIPTION	DATE
REV-0	SB-35 DEVELOPMENT APPLICATION	03/27/2018
REV-1	SB-35 APPLICATION REVISIONS	06/06/2018



ARCHITECTS PROJECT NUMBER 708011

PROJECT PHASE SB-35 DEVELOPMENT APPLICATION

IF THIS DRAWING IS NOT 36"X48" IT IS A REDUCED PRINT. REFER TO GRAPHIC SCALE.



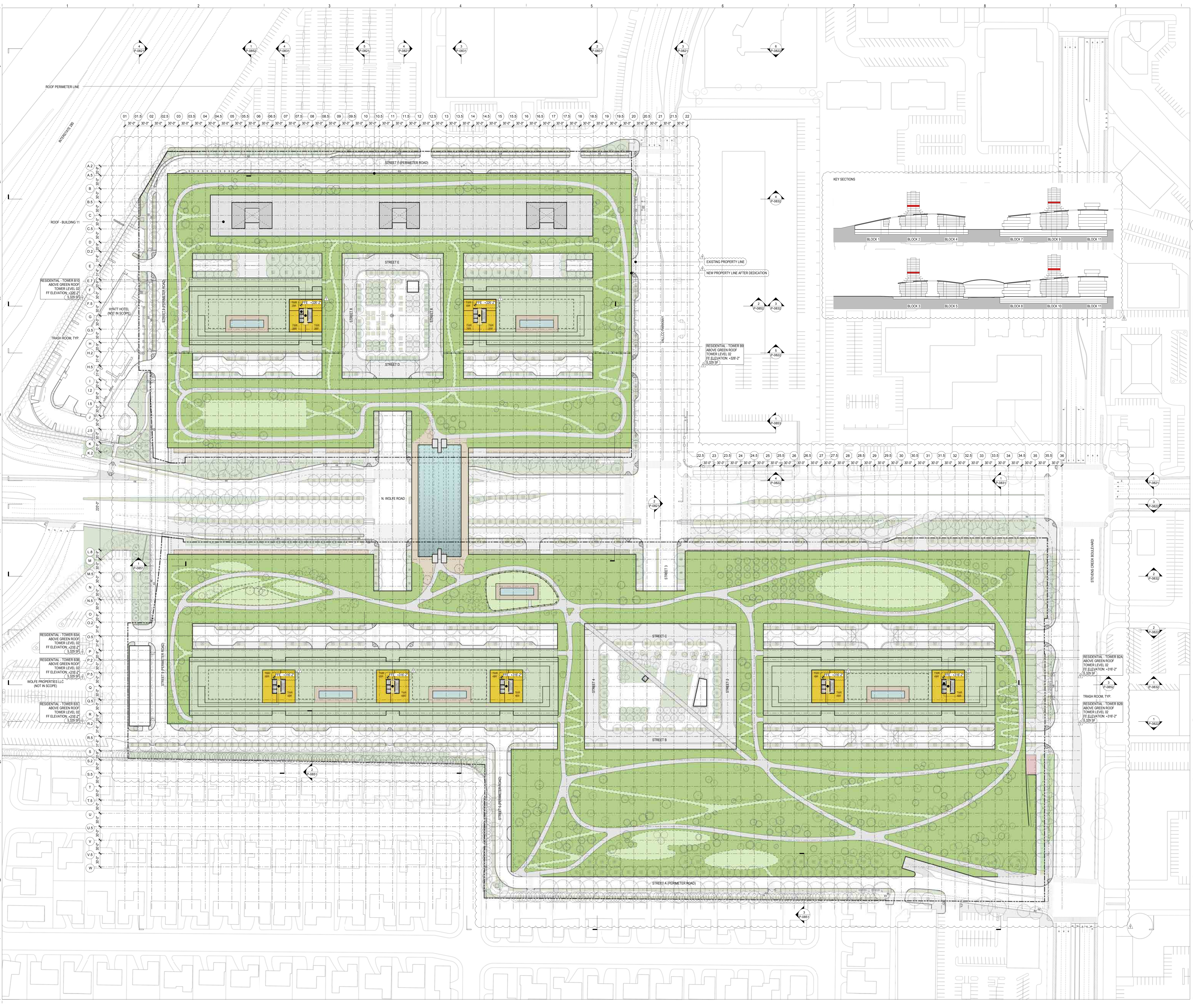
BUILDING PLAN - GREEN ROOF  
 PLAN - TOWER LEVEL 02

SHEET TITLE

P-0800.16

SHEET NUMBER

© 2018 RAFAEL VINOLY ARCHITECTS P.C.





# VALLCO TOWN CENTER

OWNER - VALLCO PROPERTY OWNER LLC  
 965 PAGE MILL ROAD, PALO ALTO, CA 94304  
 T. 650-344-1300

ARCHITECTURE - RAFAEL VINOLY ARCHITECTS  
 50 VANDAM STREET, NEW YORK, NY 10013  
 T. 212-924-0500

ARCHITECTURE - RAFAEL VINOLY ARCHITECTS  
 1033 N. WOLFE ROAD, CUPERTINO, CA 95014  
 T. 408-627-7000

LANDSCAPE ARCHITECTURE - OLIN PARTNERSHIP LTD.  
 100 S. WINDHAMER BLVD., SUITE 200, CAMPBELL, CA 95008  
 T. 214-440-0030

CIVIL - SANDIS CIVIL ENGINEERS SURVEYORS PLANNERS, INC.  
 1700 S. WINCHESTER BLVD., SUITE 200, CAMPBELL, CA 95008  
 T. 408-636-0900

TRANSPORTATION ENGINEERING - ARUP NORTH AMERICA, LTD.  
 560 MISSION STREET, SUITE 700, SAN FRANCISCO, CA 94105  
 T. 415-567-9445

LIGHTING - ONE LUX STUDIO  
 158 WEST 29TH STREET, 10TH FLOOR, NEW YORK, NY 10001  
 T. 212-201-6750

SIGNAGE - EXIT  
 1617 JPK BLVD, SUITE 1665, PHILADELPHIA, PA 19103  
 T. 215-681-1150

PARKING ENGINEERING - WATRY DESIGN, INC.  
 2099 GATEWAY PLACE, SUITE 550, SAN JOSE, CA 95110  
 T. 408-392-7300

WASTE MANAGEMENT - CIN LITTLE INTERNATIONAL  
 535 NORTH BRAND BLVD, STE 710 GLENDALE, CA 92103  
 T. 626-441-7700

## LEGEND

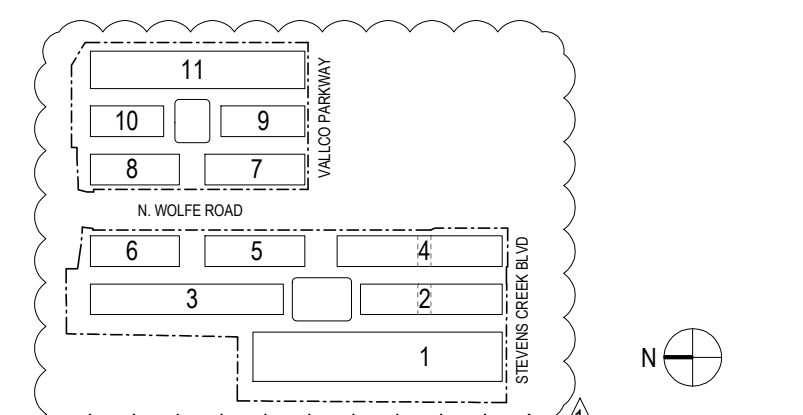
- OFFICE
- OFFICE LOBBY / AMENITY
- RESIDENTIAL
- RESIDENTIAL LOBBY / AMENITY
- RETAIL
- RETAIL LOBBY / AMENITY
- CORE / CORRIDOR
- OFFICE PARKING
- RESIDENTIAL PARKING
- RIDE SHARE (ZIP CAR)
- RETAIL PARKING
- SHARED
- E.V. PARKING
- ACCESSIBLE PARKING
- VAN ACCESSIBLE PARKING
- CENTRAL PLANT
- LOADING + TRASH
- TRASH ROOM

## NOT FOR CONSTRUCTION

DISCLAIMER  
 THE ARCHITECT/ENGINEER SHALL HAVE NO RESPONSIBILITY FOR ANY LIABILITY, LOSS, COST, DAMAGE OR EXPENSE ARISING FROM OR RELATING TO ANY USE OF THIS DOCUMENT FOR ANY PURPOSE OTHER THAN ITS INTENDED PURPOSE ON THIS PROJECT. THIS DOCUMENT IS TO BE CONSIDERED IN CONJUNCTION WITH ALL RELATED DOCUMENTATION. ANY DISCREPANCIES IDENTIFIED IN THIS DOCUMENT MUST BE REPORTED IMMEDIATELY TO THE ARCHITECT BEFORE PROCEEDING. CONTRACTORS MUST VERIFY ALL DIMENSIONS PRIOR TO PROCEEDING WITH ANY WORK. ONLY FIGURED DIMENSIONS ARE TO BE USED FOR VERIFICATION.

## SB-35 DEVELOPMENT APPLICATION

REV	DESCRIPTION	DATE
REV-0	SB-35 DEVELOPMENT APPLICATION	03/27/2018
REV-1	SB-35 APPLICATION REVISIONS	06/06/2018



ARCHITECTS PROJECT NUMBER: 708011

PROJECT PHASE: SB-35 DEVELOPMENT APPLICATION

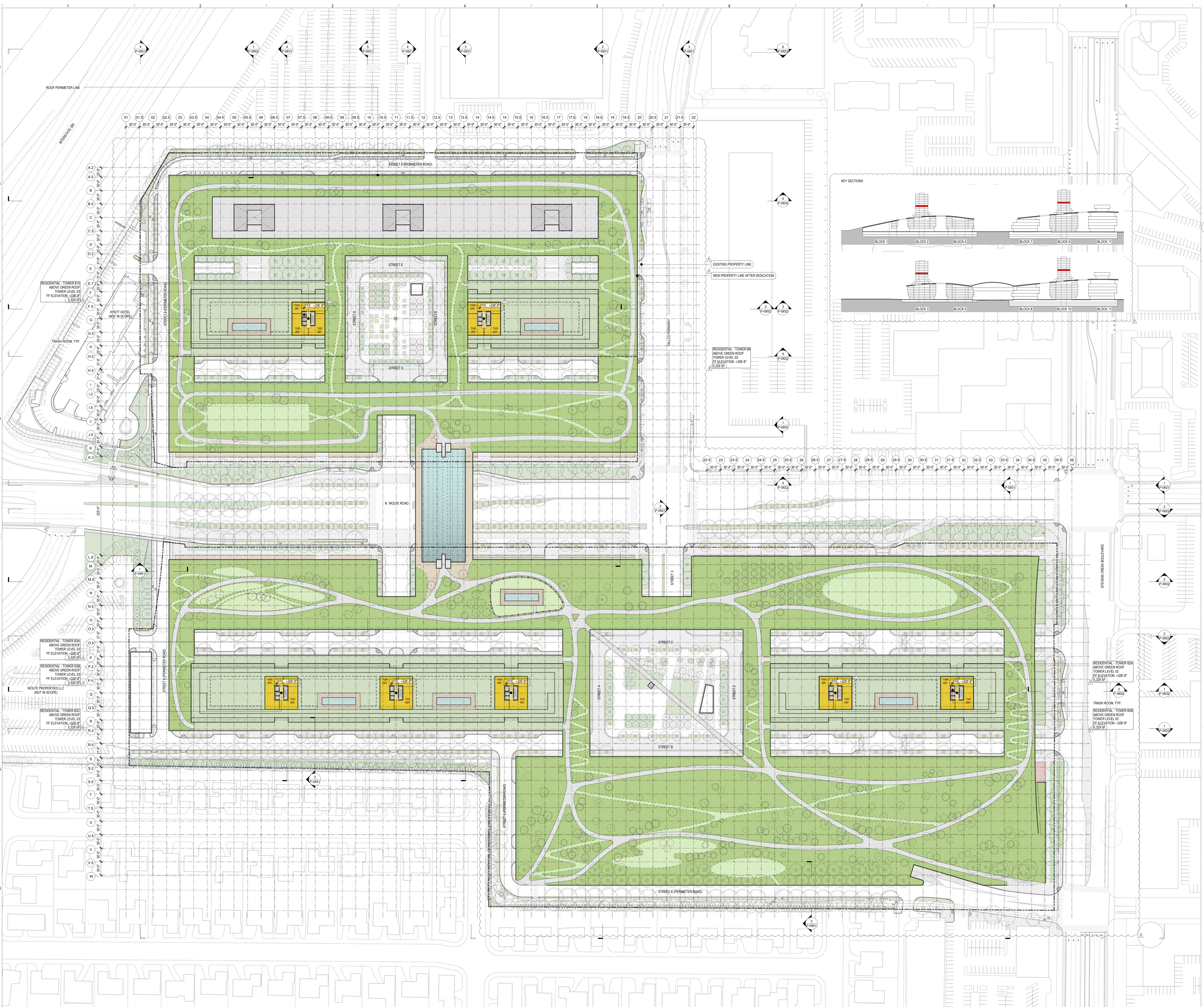
IF THIS DRAWING IS NOT 36"X48" IT IS A REDUCED PRINT. REFER TO GRAPHIC SCALE.



BUILDING PLAN - GREEN ROOF  
 PLAN - TOWER LEVEL 03

SHEET TITLE:  
**P-0800.17**

SHEET NUMBER:  
 © 2018 RAFAEL VINOLY ARCHITECTS P.C.





# VALLCO TOWN CENTER

OWNER - VALLCO PROPERTY OWNER LLC  
 965 PAGE MILL ROAD, PALO ALTO, CA 94304  
 T. 650-344-1300

ARCHITECTURE - RAFAEL VINOLY ARCHITECTS  
 50 VANDAM STREET, NEW YORK, NY 10013  
 T. 212-924-0500

ARCHITECTURE - RAFAEL VINOLY ARCHITECTS  
 1033 N. WOLFE ROAD, CUPERTINO, CA 95014  
 T. 408-627-7000

LANDSCAPE ARCHITECTURE - OLIN PARTNERSHIP LTD.  
 150 S. INDEPENDENCE BLVD., SUITE 1103, PHILADELPHIA, PA 19106  
 T. 215-440-0030

CIVIL - SANDIS CIVIL ENGINEERS SURVEYORS PLANNERS, INC.  
 1700 S. WINCHESTER BLVD., SUITE 200, CAMPBELL, CA 95008  
 T. 408-636-0900

TRANSPORTATION ENGINEERING - ARUP NORTH AMERICA, LTD.  
 560 MISSION STREET, SUITE 700, SAN FRANCISCO, CA 94105  
 T. 415-567-9445

LIGHTING - ONE LUX STUDIO  
 158 WEST 29TH STREET, 10TH FLOOR, NEW YORK, NY 10001  
 T. 212-201-6750

SIGNAGE - EXIT  
 1617 JPK BLVD, SUITE 1665, PHILADELPHIA, PA 19103  
 T. 215-661-1950

PARKING ENGINEERING - WATRY DESIGN, INC.  
 2099 GATEWAY PLACE, SUITE 550, SAN JOSE, CA 95110  
 T. 408-930-7900

WASTE MANAGEMENT - CIN LITTLE INTERNATIONAL  
 535 NORTH BRAND BLVD, STE 710 GLENDALE, CA 92103  
 T. 626-441-7700

**LEGEND**

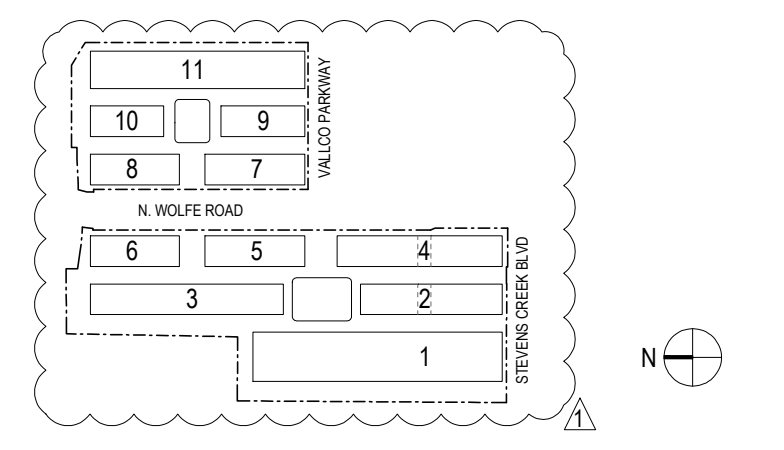
- OFFICE
- OFFICE LOBBY / AMENITY
- RESIDENTIAL
- RESIDENTIAL LOBBY / AMENITY
- RETAIL
- RETAIL LOBBY / AMENITY
- CORE / CORRIDOR
- OFFICE PARKING
- RESIDENTIAL PARKING
- RIDE SHARE (ZIP CAR)
- RETAIL PARKING
- SHARED
- E.V. PARKING
- ACCESSIBLE PARKING
- VAN ACCESSIBLE PARKING
- CENTRAL PLANT
- LOADING + TRASH
- TRASH ROOM

**NOT FOR CONSTRUCTION**

DISCLAIMER  
 THE ARCHITECT / ENGINEER SHALL HAVE NO RESPONSIBILITY FOR ANY LIABILITY, LOSS, COST, DAMAGE OR EXPENSE ARISING FROM OR RELATING TO ANY USE OF THIS DOCUMENT FOR ANY PURPOSE OTHER THAN ITS INTENDED PURPOSE ON THIS PROJECT. THIS DOCUMENT IS TO BE CONSIDERED IN CONJUNCTION WITH ALL RELATED DOCUMENTATION. ANY DISCREPANCIES IDENTIFIED IN THIS DOCUMENT MUST BE REPORTED IMMEDIATELY TO THE ARCHITECT BEFORE PROCEEDING. CONTRACTORS MUST VERIFY ALL DIMENSIONS PRIOR TO PROCEEDING WITH ANY WORK. ONLY FIGURED DIMENSIONS ARE TO BE USED FOR VERIFICATION.

**SB-35 DEVELOPMENT APPLICATION**

REV	DESCRIPTION	DATE
REV-0	SB-35 DEVELOPMENT APPLICATION	03/27/2018
REV-1	SB-35 APPLICATION REVISIONS	06/06/2018



ARCHITECTS PROJECT NUMBER: 708011  
 PROJECT PHASE: SB-35 DEVELOPMENT APPLICATION  
 IF THIS DRAWING IS NOT 36"X48" IT IS A REDUCED PRINT. REFER TO GRAPHIC SCALE.  
 SCALE: 1/8"=1'-0"  
 0 32 64 128 192

**BUILDING PLAN - GREEN ROOF PLAN - TOWER LEVEL 04**

SHEET TITLE:  
**P-0800.18**  
 SHEET NUMBER:  
 © 2018 RAFAEL VINOLY ARCHITECTS P.C.

