

VALLCO TOWN CENTER

OWNER: VALLCO PROPERTY OWNER LLC
965 PAGE MILL ROAD, PALO ALTO, CA 94304
T. 650-344-1500

ARCHITECTURE: RAFAEL VINOY ARCHITECTS
50 VANDAM STREET, NEW YORK, NY 10013
T. 212-924-5500

ARCHITECTURE: RAFAEL VINOY ARCHITECTS
1033 N. WOLFE ROAD, CUPERTINO, CA 95014
T. 408-627-7090

LANDSCAPE ARCHITECTURE: OLIN PARTNERSHIP LTD.
192 S. WOODSTOCK AVENUE, SUITE 200, PHILADELPHIA, PA 19106
T. 215-440-0030

CIVIL: SANDIS CIVIL ENGINEERS SURVEYORS PLANNERS, INC.
1700 S. WINDHESTER BLVD., SUITE 200, CAMPBELL, CA 95008
T. 408-636-9900

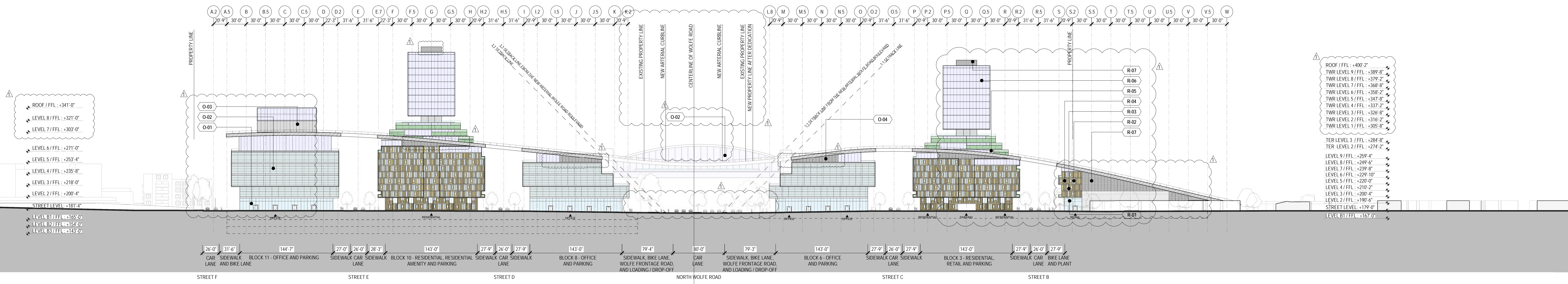
TRANSPORTATION ENGINEERING: ARUP NORTH AMERICA, LTD.
580 MISSION STREET, SUITE 700, SAN FRANCISCO, CA 94105
T. 415-957-9445

LIGHTING: ONE LUX STUDIO
158 WEST 29TH STREET, 10TH FLOOR, NEW YORK, NY 10001
T. 212-201-5790

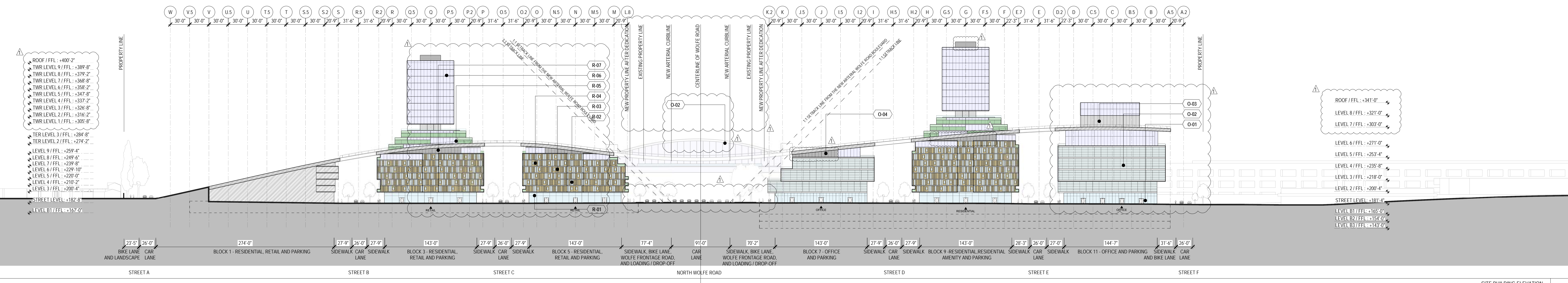
SIGNAGE: EXHIT
1617 JPK BLVD, SUITE 1665, PHILADELPHIA, PA 19103
T. 215-561-1950

PARKING ENGINEERING: WATRY DESIGN, INC.
2099 GATEWAY PLACE, SUITE 550, SAN JOSE, CA 95110
T. 408-952-7900

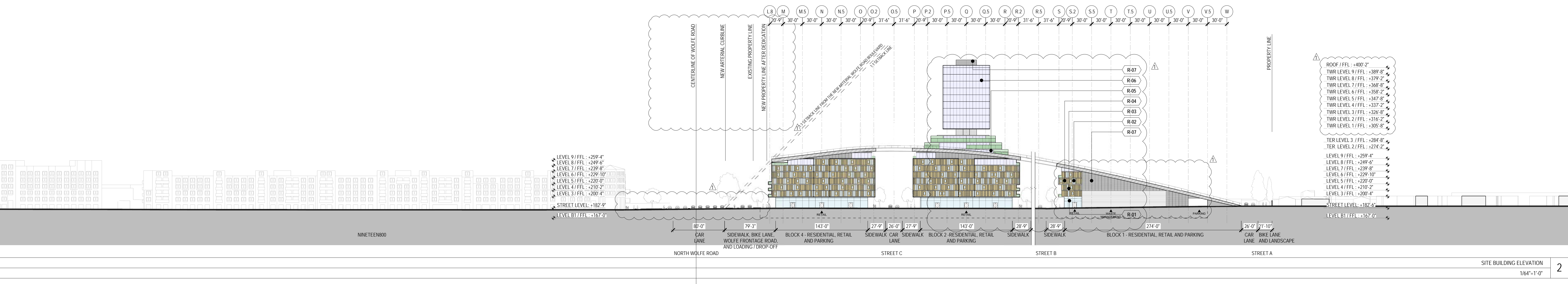
WASTE MANAGEMENT: CINI LITTLE INTERNATIONAL
535 NORTH BRAND BLVD, STE 710 GLENDALE, CA 92103
T. 626-441-7700



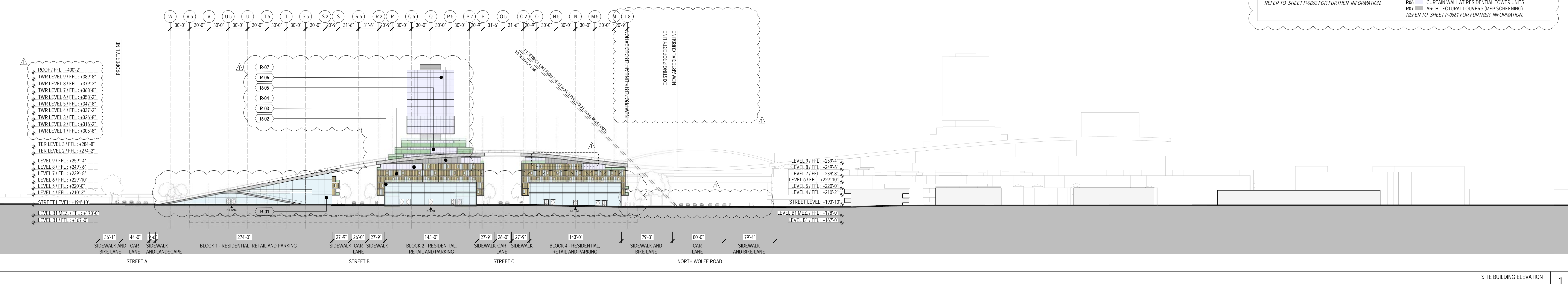
SITE BUILDING ELEVATION
184'-1'-0"



SITE BUILDING ELEVATION
184'-1'-0"



SITE BUILDING ELEVATION
184'-1'-0"



SITE BUILDING ELEVATION
184'-1'-0"

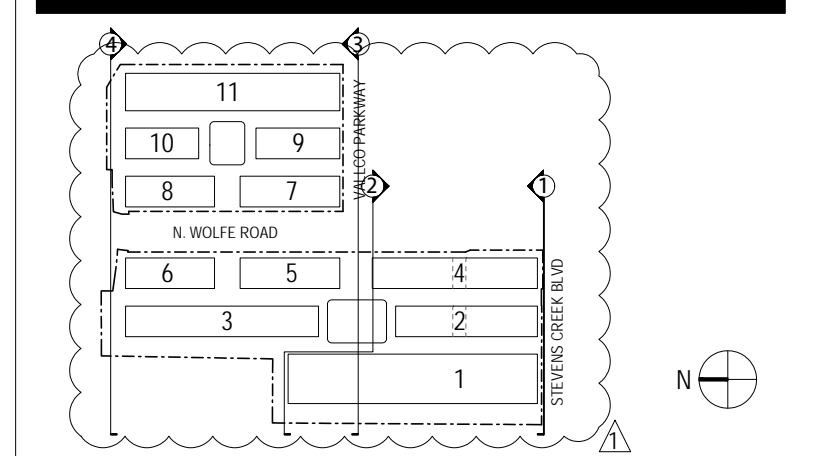
NOT FOR CONSTRUCTION

DISCLAIMER
THE ARCHITECT/ENGINEER SHALL HAVE NO RESPONSIBILITY FOR ANY LIABILITY, LOSS, COST, DAMAGE OR EXPENSE ARISING FROM OR RELATING TO ANY USE OF THIS DOCUMENT FOR ANY PURPOSE OTHER THAN ITS INTENDED PURPOSE ON THIS PROJECT. THIS DOCUMENT IS TO BE CONSIDERED IN CONJUNCTION WITH ALL RELATED DOCUMENTATION. ANY DISCREPANCIES IDENTIFIED IN THIS DOCUMENT MUST BE REPORTED IMMEDIATELY TO THE ARCHITECT BEFORE PROCEEDING. CONTRACTORS MUST VERIFY ALL DIMENSIONS PRIOR TO PROCEEDING WITH ANY WORK. ONLY FIGURED DIMENSIONS ARE TO BE USED FOR VERIFICATION.

SB-35 DEVELOPMENT APPLICATION

REV	DESCRIPTION	DATE
REV-0	SB-35 DEVELOPMENT APPLICATION	03/27/2018
REV-1	SB-35 APPLICATION REVISIONS	03/31/2018

WALL FINISH LEGEND - OFFICE BLOCKS		WALL FINISH LEGEND - RESIDENTIAL BLOCKS	
O01	OFFICE LOBBY	R01	RETAIL STOREFRONTS
O02	CURTAIN WALL AT OFFICE BUILDINGS	R02	SLEUNG DOORS AT RESIDENTIAL UNITS LOWER LEVELS
O03	METAL PANEL WALL AT OFFICE BUILDINGS	R03	SLEUNG DOORS AT RESIDENTIAL UNITS
O04	ARCHITECTURAL LOUVERS (W/ P SCREENING)	R04	"WOOD" SIDING AT RESIDENTIAL UNITS
	REFER TO SHEET P-0810 FOR FURTHER INFORMATION	R05	SLEUNG DOORS AT RESIDENTIAL UNITS TERRACE LEVEL
		R06	CURTAIN WALL AT RESIDENTIAL TOWERS UNITS
		R07	ARCHITECTURAL LOUVERS (W/ P SCREENING)
			REFER TO SHEET P-0810 FOR FURTHER INFORMATION



ARCHITECTS PROJECT NUMBER: 708011

PROJECT PHASE: SB-35 DEVELOPMENT APPLICATION

IF THIS DRAWING IS NOT 3/4" = 1' IT IS A REDUCED PRINT. REFER TO GRAPHIC SCALE.



SCALE: 1/8" = 1'-0"

BUILDING ELEVATIONS

SHEET TITLE:

P-0821

SHEET NUMBER:

© 2018 RAFAEL VINOY ARCHITECTS P.C.

VALLCO TOWN CENTER

OWNER - VALLCO PROPERTY OWNER LLC
 965 PAGE MILL ROAD, PALO ALTO, CA 94304
 T. 650-344-1500

ARCHITECTURE - RAFAEL VINOY ARCHITECTS
 50 VANDAM STREET, NEW YORK, NY 10013
 T. 212-924-0500

ARCHITECTURE - RAFAEL VINOY ARCHITECTS
 1033 N. WOLFE ROAD, CUPERTINO, CA 95014
 T. 408-627-7000

LANDSCAPE ARCHITECTURE - OLIN PARTNERSHIP LTD.
 101 S. INDEPENDENCE MALL, W. SUITE 1123, PHILADELPHIA, PA 19106
 T. 215-440-0030

CIVIL - SANDIS CIVIL ENGINEERS SURVEYORS PLANNERS, INC.
 1700 S. WINCHESTER BLVD., SUITE 200, CAMPBELL, CA 95008
 T. 408-636-0900

TRANSPORTATION ENGINEERING - ARUP NORTH AMERICA, LTD.
 860 MISSION STREET, SUITE 700, SAN FRANCISCO, CA 94105
 T. 415-557-9445

LIGHTING - ONE LUX STUDIO
 158 WEST 29TH STREET, 10TH FLOOR, NEW YORK, NY 10001
 T. 212-203-6750

SIGNAGE - EXIT
 1617 JPK BLVD, SUITE 1665, PHILADELPHIA, PA 19103
 T. 215-681-1150

PARKING ENGINEERING - WATRY DESIGN, INC.
 2099 GATEWAY PLACE, SUITE 550, SAN JOSE, CA 95110
 T. 408-392-7900

WASTE MANAGEMENT - CINLITTLE INTERNATIONAL
 535 NORTH BRAND BLVD, STE 710 GLENDALE, CA 92103
 T. 626-441-7700

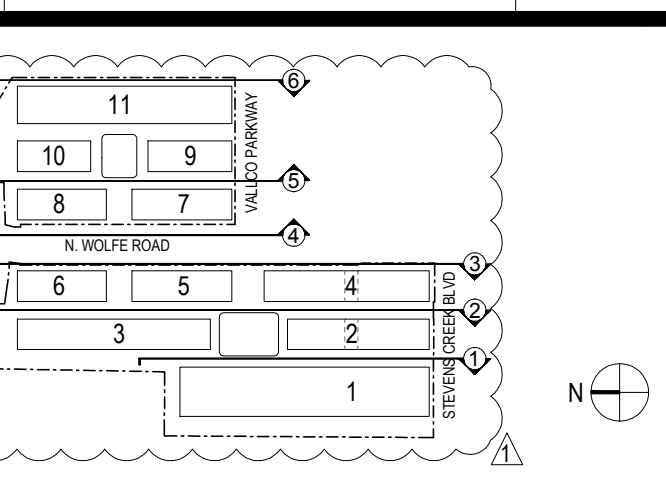


NOT FOR CONSTRUCTION

DISCLAIMER
 THE ARCHITECT ENGINEER SHALL HAVE NO RESPONSIBILITY FOR ANY LIABILITY, LOSS, COST, DAMAGE OR EXPENSE ARISING FROM OR RELATING TO ANY USE OF THIS DOCUMENT FOR ANY PURPOSE OTHER THAN ITS INTENDED PURPOSE ON THIS PROJECT. THIS DOCUMENT IS TO BE CONSIDERED IN CONJUNCTION WITH ALL RELATED DOCUMENTATION. ANY DISCREPANCIES IDENTIFIED IN THIS DOCUMENT MUST BE REPORTED IMMEDIATELY TO THE ARCHITECT BEFORE PROCEEDING. CONTRACTORS MUST VERIFY ALL DIMENSIONS PRIOR TO PROCEEDING WITH ANY WORK. ONLY FIGURED DIMENSIONS ARE TO BE USED FOR VERIFICATION.

SB-35 DEVELOPMENT APPLICATION

REV	DESCRIPTION	DATE
REV-0	SB-35 DEVELOPMENT APPLICATION	03/27/2018
REV-1	SB-35 APPLICATION REVISIONS	07/31/2018



ARCHITECTS PROJECT NUMBER: 708011

PROJECT PHASE: SB-35 DEVELOPMENT APPLICATION

IF THIS DRAWING IS NOT 36" X 48" IT IS A REDUCED PRINT. REFER TO GRAPHIC SCALE.



BUILDING ELEVATIONS

SHEET TITLE: **P-0822**

SHEET NUMBER: 1

© 2018 RAFAEL VINOY ARCHITECTS P.C.

VALLCO TOWN CENTER

OWNER - VALLCO PROPERTY OWNER LLC
965 PAGE MILL ROAD, PALO ALTO, CA 94304
T. 650-344-1500

ARCHITECTURE - RAFAEL VINOLY ARCHITECTS
50 VANDAM STREET, NEW YORK, NY 10013
T. 212-924-5050

ARCHITECTURE - RAFAEL VINOLY ARCHITECTS
1033 N. HOLDEE ROAD, CUPERTINO, CA 95014
T. 408-627-7090

LANDSCAPE ARCHITECTURE - OLIN PARTNERSHIP LTD.
192 S. WOODFORDENCE MALL, V. SUITE 1123, PHILADELPHIA, PA 19106
T. 215-480-0030

CIVIL - SANDIS CIVIL ENGINEERS SURVEYORS PLANNERS, INC.
1700 S. WINDCHESTER BLVD, SUITE 200, CAMPBELL, CA 95008
T. 408-636-0900

TRANSPORTATION ENGINEERING - ARUP NORTH AMERICA, LTD.
580 MISSION STREET, SUITE 700, SAN FRANCISCO, CA 94105
T. 415-957-9445

LIGHTING - ONE LUX STUDIO
158 WEST 29TH STREET, 10TH FLOOR, NEW YORK, NY 10001
T. 212-201-5790

SIGNAGE - EXIT
1617 JFK BLVD, SUITE 1665, PHILADELPHIA, PA 19103
T. 215-561-1950

PARKING ENGINEERING - WATRY DESIGN, INC.
2099 GATEWAY PLACE, SUITE 550, SAN JOSE, CA 95110
T. 408-952-7900

WASTE MANAGEMENT - CINI LITTLE INTERNATIONAL
535 NORTH BRAND BLVD, STE 710 GLENDALE, CA 92103
T. 626-441-7700

NOT FOR CONSTRUCTION

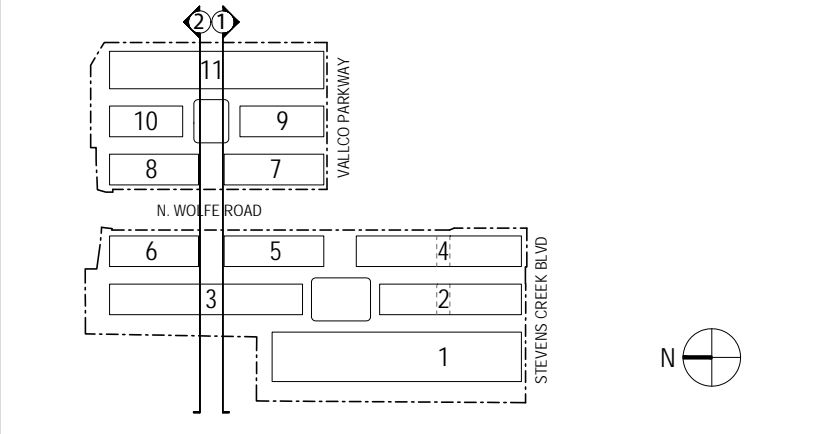
DISCLAIMER
THE ARCHITECT/ENGINEER SHALL HAVE NO RESPONSIBILITY FOR ANY LIABILITY, LOSS, COST, DAMAGE OR EXPENSE ARISING FROM OR RELATING TO ANY USE OF THIS DOCUMENT FOR ANY PURPOSE OTHER THAN ITS INTENDED PURPOSE ON THIS PROJECT. THIS DOCUMENT IS TO BE CONSIDERED IN CONJUNCTION WITH ALL RELATED DOCUMENTATION. ANY DISCREPANCIES IDENTIFIED IN THIS DOCUMENT MUST BE REPORTED IMMEDIATELY TO THE ARCHITECT BEFORE PROCEEDING. CONTRACTORS MUST VERIFY ALL DIMENSIONS PRIOR TO PROCEEDING WITH ANY WORK. ONLY FIGURED DIMENSIONS ARE TO BE USED FOR VERIFICATION.

SB-35 DEVELOPMENT APPLICATION

REV	DESCRIPTION	DATE
REV 0	SB-35 APPLICATION REVISIONS	07/31/2018

SITE BUILDING ELEVATION
184'-1'-0"

2

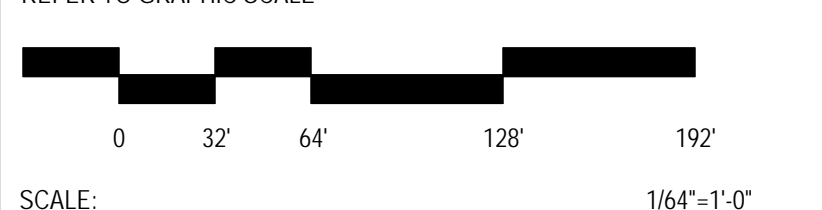


KEY PLAN AND NORTH ARROW

ARCHITECTS PROJECT NUMBER: 708011

PROJECT PHASE: SB-35 DEVELOPMENT APPLICATION

IF THIS DRAWING IS NOT 36"X48" IT IS A REDUCED PRINT. REFER TO GRAPHIC SCALE.



SCALE: 1/8"=1'-0"

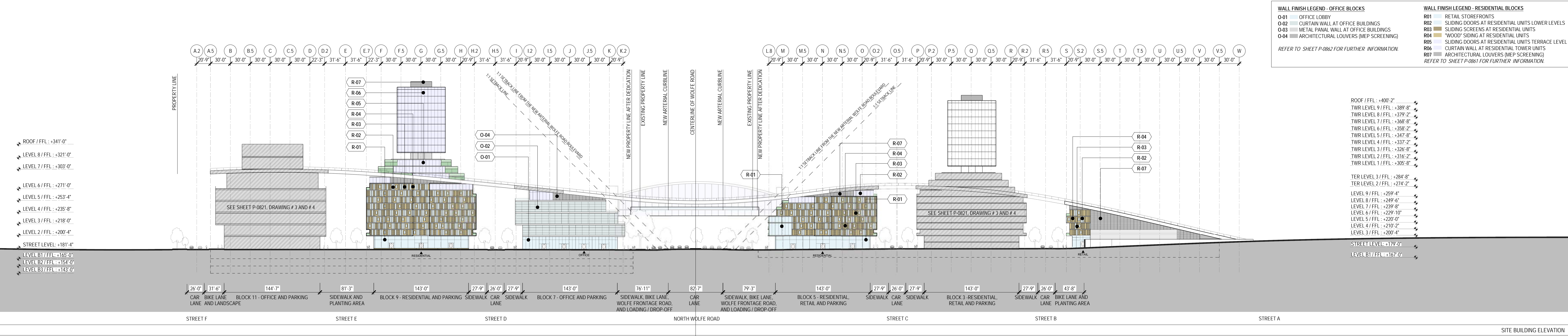
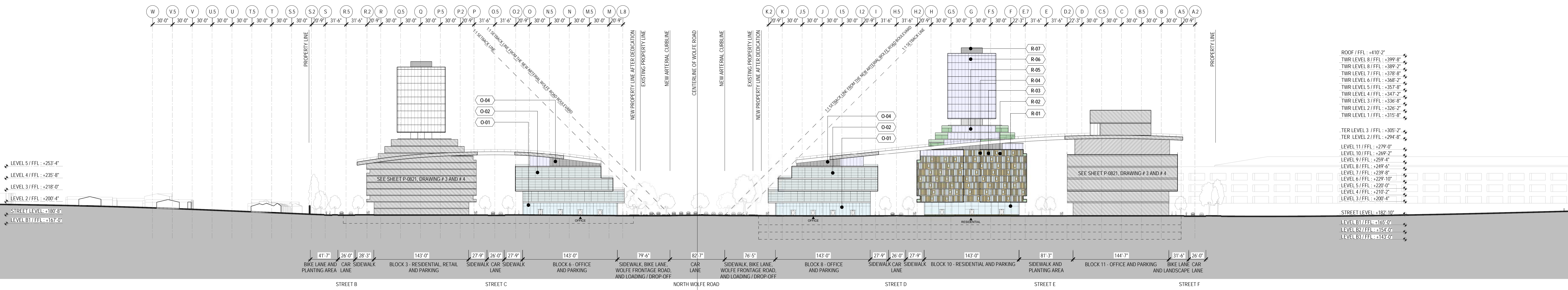
BUILDING ELEVATIONS

SHEET TITLE:

P-0823

SHEET NUMBER:

© 2018 RAFAEL VINOLY ARCHITECTS P.C.



WALL FINISH LEGEND - OFFICE BLOCKS		WALL FINISH LEGEND - RESIDENTIAL BLOCKS	
O 01	OFFICE LOBBY	R 01	RETAIL STOREFRONTS
O 02	CURTAIN WALL AT OFFICE BUILDINGS	R 02	SLEIGH DOORS AT RESIDENTIAL UNITS LOWER LEVELS
O 03	METAL PANEL WALL AT OFFICE BUILDINGS	R 03	SLEIGH SCREENS AT RESIDENTIAL UNITS
O 04	ARCHITECTURAL LOUVERS (W/ P SCREENING)	R 04	"WOOD" SIDING AT RESIDENTIAL UNITS
	REFER TO SHEET P-0801 FOR FURTHER INFORMATION	R 05	SLEIGH DOORS AT RESIDENTIAL UNITS TERRACE LEVEL
		R 06	CURTAIN WALL AT RESIDENTIAL TOWER UNITS
		R 07	ARCHITECTURAL LOUVERS (W/ P SCREENING)
			REFER TO SHEET P-0801 FOR FURTHER INFORMATION

VALLCO TOWN CENTER

OWNER: VALLCO PROPERTY OWNER LLC
 965 PAGE MILL ROAD, PALO ALTO, CA 94304
 650-344-1500

ARCHITECTURE: RAFAEL VINOY ARCHITECTS
 50 VANDAM STREET, NEW YORK, NY 10013
 T. 212-924-5500

ARCHITECTURE: RAFAEL VINOY ARCHITECTS
 1033 N. HOLDEE ROAD, CUPERTINO, CA 95014
 T. 408-627-7090

LANDSCAPE ARCHITECTURE: OLIN PARTNERSHIP LTD.
 192 S. WOODSIDE STREET, SUITE 200, PHILADELPHIA, PA 19106
 T. 215-440-0030

CIVIL: SANDIS CIVIL ENGINEERS SURVEYORS PLANNERS, INC.
 1705 S. WILCOX STREET, SUITE 200, CAMPBELL, CA 95008
 T. 408-636-9900

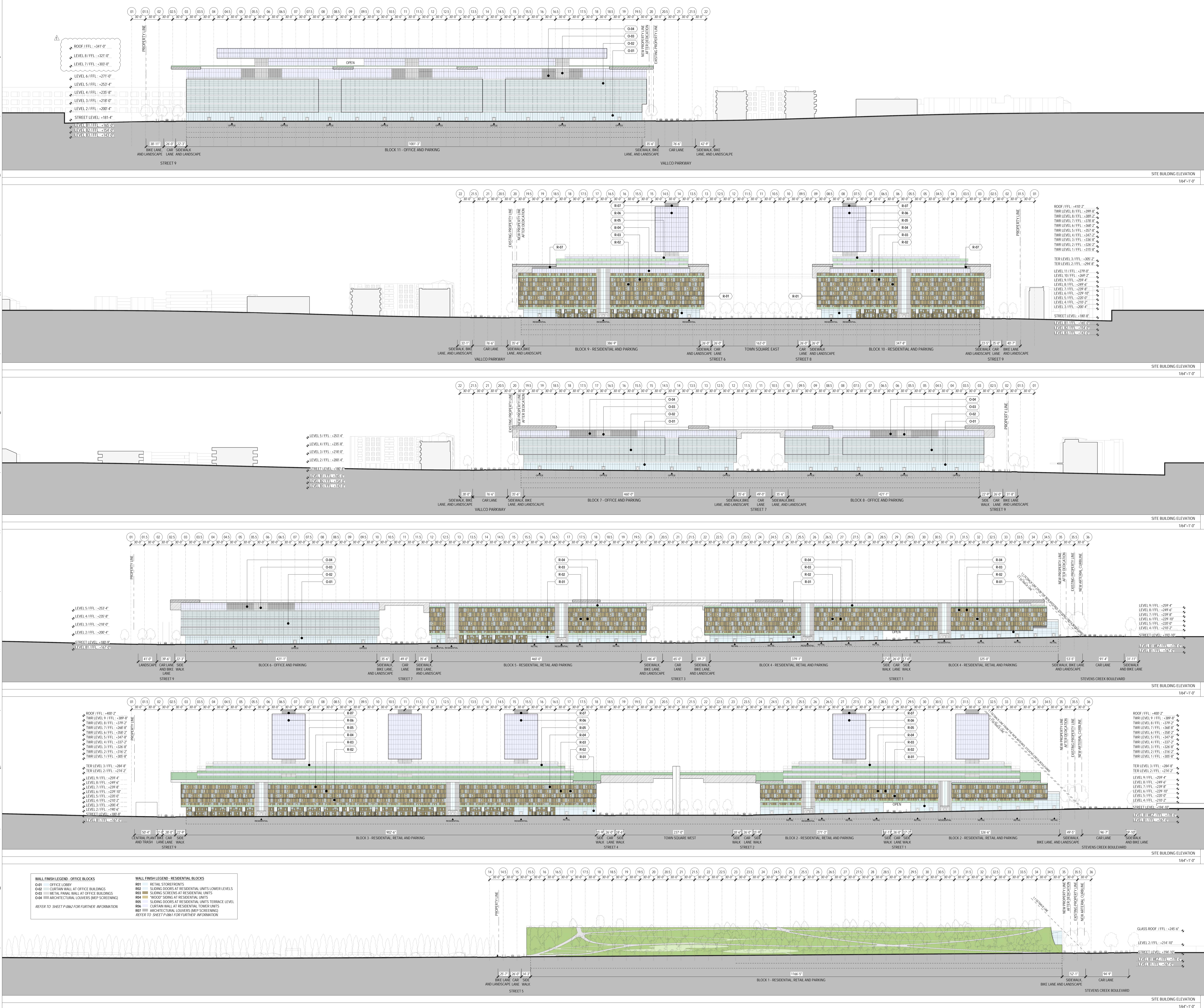
TRANSPORTATION ENGINEERING: ARUP NORTH AMERICA, LTD.
 560 MISSION STREET, SUITE 700, SAN FRANCISCO, CA 94105
 T. 415-957-9445

LIGHTING: ONE LUX STUDIO
 158 WEST 29TH STREET, 10TH FLOOR, NEW YORK, NY 10001
 T. 212-201-5790

SIGNAGE - EXIT
 1617 JFK BLVD, SUITE 1665, PHILADELPHIA, PA 19103
 T. 215-561-1950

PARKING ENGINEERING: WATRY DESIGN, INC.
 2099 GATEWAY PLACE, SUITE 550, SAN JOSE, CA 95110
 T. 408-952-7900

WASTE MANAGEMENT: CIN LITTLE INTERNATIONAL
 535 NORTH BRAND BLVD, STE 710 GLENDALE, CA 92103
 T. 626-441-7700



SITE BUILDING ELEVATION 184'-1'-0" 6

SITE BUILDING ELEVATION 184'-1'-0" 5

SITE BUILDING ELEVATION 184'-1'-0" 4

SITE BUILDING ELEVATION 184'-1'-0" 3

SITE BUILDING ELEVATION 184'-1'-0" 2

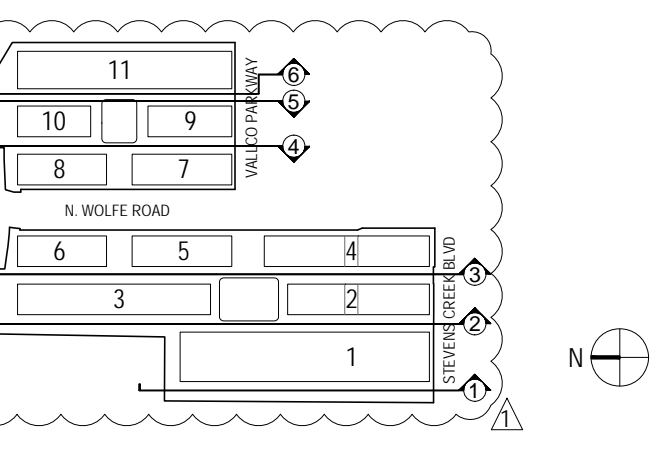
SITE BUILDING ELEVATION 184'-1'-0" 1

NOT FOR CONSTRUCTION

DISCLAIMER
 THE ARCHITECT/ENGINEER SHALL HAVE NO RESPONSIBILITY FOR ANY LIABILITY, LOSS, COST, DAMAGE OR EXPENSE ARISING FROM OR RELATING TO ANY USE OF THIS DOCUMENT FOR ANY PURPOSE OTHER THAN THAT INTENDED PURSUANT TO THIS PROJECT. THIS DOCUMENT IS TO BE CONSIDERED IN CONJUNCTION WITH ALL RELATED DOCUMENTATION. ANY DISCREPANCIES IDENTIFIED IN THIS DOCUMENT MUST BE REPORTED IMMEDIATELY TO THE ARCHITECT BEFORE PROCEEDING. CONTRACTORS MUST VERIFY ALL DIMENSIONS PRIOR TO PROCEEDING WITH ANY WORK. ONLY FIGURED DIMENSIONS ARE TO BE USED FOR VERIFICATION.

SB-35 DEVELOPMENT APPLICATION

REV	DESCRIPTION	DATE
REV 0	SB-35 APPLICATION REVISIONS	07/31/2018



ARCHITECTS PROJECT NUMBER: 708011

PROJECT PHASE: SB-35 DEVELOPMENT APPLICATION

IF THIS DRAWING IS NOT 36" X 48" IT IS A REDUCED PRINT. REFER TO GRAPHIC SCALE.



BUILDING ELEVATIONS

SHEET TITLE: P-0824

SHEET NUMBER: 1

© 2018 RAFAEL VINOY ARCHITECTS P.C.

WALL FINISH LEGEND - OFFICE BLOCKS	WALL FINISH LEGEND - RESIDENTIAL BLOCKS
0-01 OFFICE LOBBY	R-01 RETAIL STOREFRONTS
0-02 CURTAIN WALL AT OFFICE BUILDINGS	R-02 SLIDING DOORS AT RESIDENTIAL UNITS LOWER LEVELS
0-03 METAL PANEL WALL AT OFFICE BUILDINGS	R-03 SLIDING DOORS AT RESIDENTIAL UNITS
0-04 ARCHITECTURAL LOUVERS (MSP SCREENING)	R-04 "WOOD" SLIDING AT RESIDENTIAL UNITS
	R-05 SLIDING DOORS AT RESIDENTIAL UNITS TERRACE LEVEL
	R-06 CURTAIN WALL AT RESIDENTIAL TOWER UNITS
REFER TO SHEET P-0862 FOR FURTHER INFORMATION	R-07 ARCHITECTURAL LOUVERS (MSP SCREENING)
	REFER TO SHEET P-0861 FOR FURTHER INFORMATION

VALLCO TOWN CENTER

OWNER - VALLCO PROPERTY OWNER LLC
965 PAGE MILL ROAD, PALO ALTO, CA 94304
T. 650-344-1500

ARCHITECTURE - RAFAEL VINOLY ARCHITECTS
50 VANDAM STREET, NEW YORK, NY 10013
T. 212-924-5500

ARCHITECTURE - RAFAEL VINOLY ARCHITECTS
1033 N. WOLFE ROAD, CUPERTINO, CA 95014
T. 408-627-7090

LANDSCAPE ARCHITECTURE - OLIN PARTNERSHIP LTD.
1705 S. WINDHAM STREET, SUITE 200, CAMPBELL, CA 95008
T. 214-440-0030

CIVIL - SANDS CIVIL ENGINEERS SURVEYORS PLANNERS, INC.
1705 S. WINDHAM STREET, SUITE 200, CAMPBELL, CA 95008
T. 408-636-9900

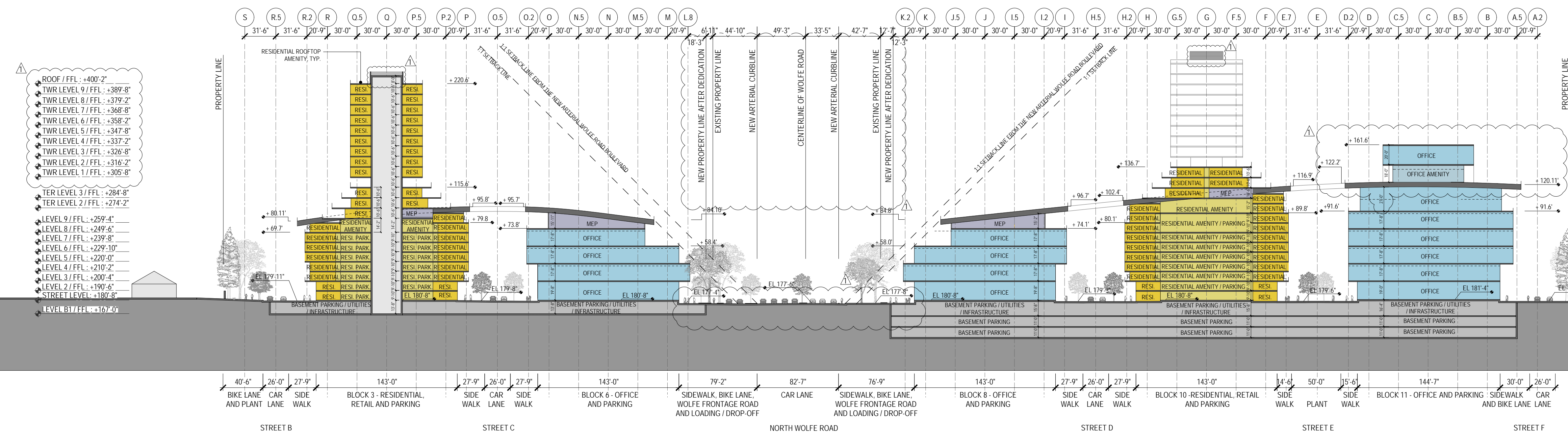
TRANSPORTATION ENGINEERING - ARUP NORTH AMERICA, LTD.
580 MISSION STREET, SUITE 700, SAN FRANCISCO, CA 94105
T. 415-957-9445

LIGHTING - ONE LUX STUDIO
158 WEST 29TH STREET, 10TH FLOOR, NEW YORK, NY 10001
T. 212-201-5790

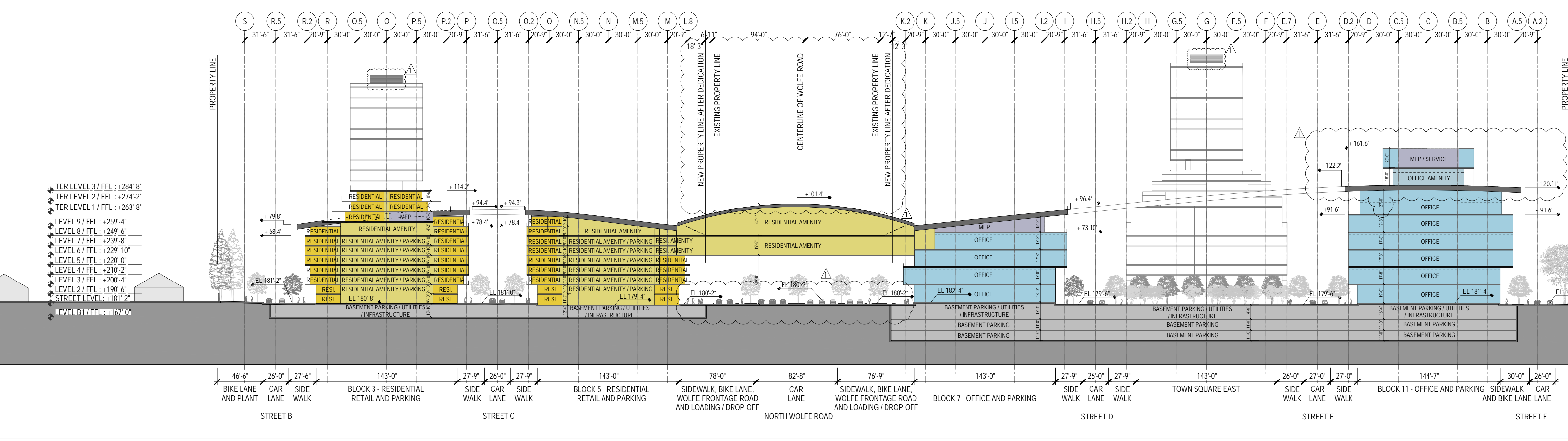
SIGNAGE - EXIT
1617 JPK BLVD, SUITE 1665, PHILADELPHIA, PA 19103
T. 215-561-1950

PARKING ENGINEERING - WATRY DESIGN, INC.
2099 GATEWAY PLACE, SUITE 550, SAN JOSE, CA 95110
T. 408-962-7900

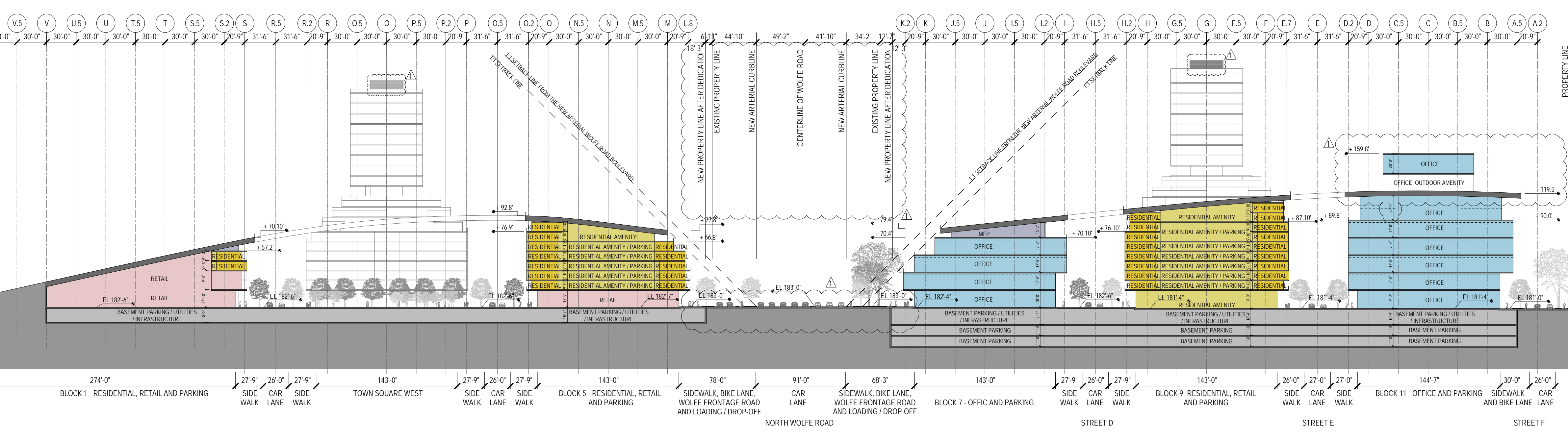
WASTE MANAGEMENT - CILITTLE INTERNATIONAL
535 NORTH BRAND BLVD, STE 710 GLENDALE, CA 91203
T. 626-441-7700



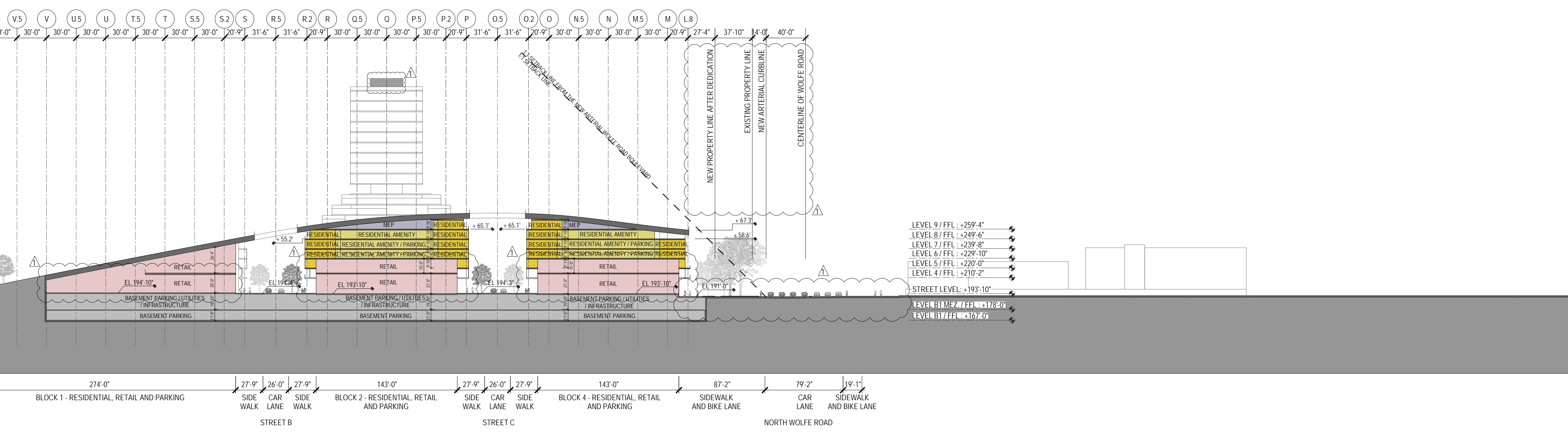
SITE BUILDING SECTION - THROUGH BLOCK 3 TO 11
184'-1'-0"



SITE BUILDING SECTION - THROUGH BLOCK 3 TO 11
184'-1'-0"



SITE BUILDING SECTION - THROUGH BLOCK 1 TO 11
184'-1'-0"



SITE BUILDING SECTION - THROUGH BLOCK 1 TO 4
184'-1'-0"

LEGEND

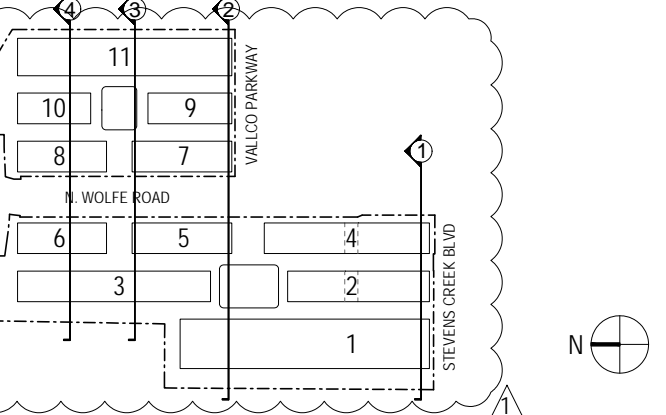
- OFFICE
- RESIDENTIAL
- RESIDENTIAL AMENITY
- RETAIL
- MEP / SERVICE
- PARKING
- CORE / CORRIDOR

NOT FOR CONSTRUCTION

DISCLAIMER
THE ARCHITECT / ENGINEER SHALL HAVE NO RESPONSIBILITY FOR ANY LIABILITY, LOSS, COST, DAMAGE OR EXPENSE ARISING FROM OR RELATING TO ANY USE OF THIS DOCUMENT FOR ANY PURPOSE OTHER THAN ITS INTENDED PURPOSE ON THIS PROJECT. THIS DOCUMENT IS TO BE CONSIDERED IN CONJUNCTION WITH ALL RELATED DOCUMENTATION. ANY DISCREPANCIES IDENTIFIED IN THIS DOCUMENT MUST BE REPORTED IMMEDIATELY TO THE ARCHITECT BEFORE PROCEEDING. CONTRACTORS MUST VERIFY ALL DIMENSIONS PRIOR TO PROCEEDING WITH ANY WORK. ONLY FIGURED DIMENSIONS ARE TO BE USED FOR VERIFICATION.

SB-35 DEVELOPMENT APPLICATION

REV	DESCRIPTION	DATE
REV-0	SB-35 DEVELOPMENT APPLICATION	03/27/2018
REV-1	SB-35 APPLICATION REVISIONS	07/31/2018



KEY PLAN AND NORTH ARROW

ARCHITECTS PROJECT NUMBER: 708011

PROJECT PHASE: SB-35 DEVELOPMENT APPLICATION

IF THIS DRAWING IS NOT 36" x 48" IT IS A REDUCED PRINT. REFER TO GRAPHIC SCALE.



BUILDING SECTIONS

SHEET TITLE:

P-0831

SHEET NUMBER:

© 2018 RAFAEL VINOLY ARCHITECTS P.C.

VALLCO TOWN CENTER

OWNER: VALLCO PROPERTY OWNER LLC
 965 PAGE MILL ROAD, PALO ALTO, CA 94304
 T. 650-344-1500

ARCHITECTURE: RAFAEL VINOY ARCHITECTS
 50 VANDAM STREET, NEW YORK, NY 10013
 T. 212-924-5560

ARCHITECTURE: RAFAEL VINOY ARCHITECTS
 1033 N. HOLDEE ROAD, SUPERIOR, IA 50514
 T. 402-627-7090

LANDSCAPE ARCHITECTURE: OLIN PARTNERSHIP LTD.
 192 S. WINDPOND DRIVE, SUITE 200, CAMPBELL, CA 95008
 T. 415-440-0030

CIVIL: SANDIS CIVIL ENGINEERS SURVEYORS PLANNERS, INC.
 1700 S. WINDPOND DRIVE, SUITE 200, CAMPBELL, CA 95008
 T. 408-636-9900

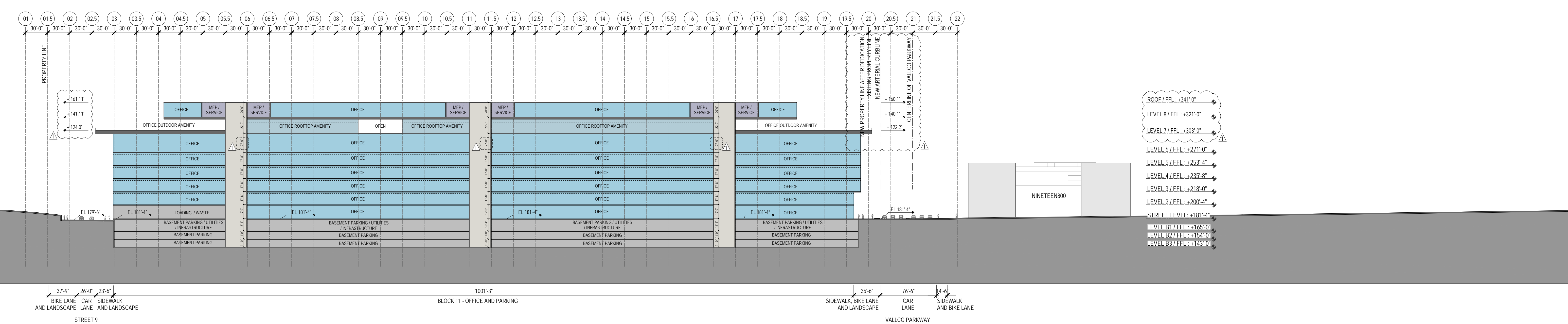
TRANSPORTATION ENGINEERING: ARUP NORTH AMERICA, LTD.
 580 MISSION STREET, SUITE 700, SAN FRANCISCO, CA 94105
 T. 415-957-9445

LIGHTING: ONE LUX STUDIO
 158 WEST 29TH STREET, 10TH FLOOR, NEW YORK, NY 10011
 T. 212-201-5790

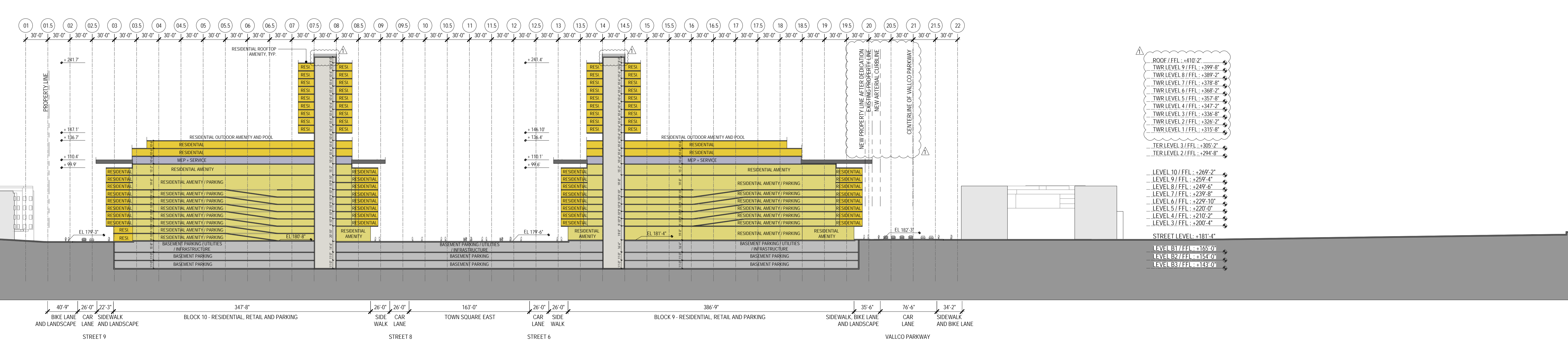
SIGNAGE: EXHIT
 1617 JFK BLVD, SUITE 1665, PHILADELPHIA, PA 19103
 T. 215-561-1190

PARKING ENGINEERING: WATRY DESIGN, INC.
 2099 GATEWAY PLACE, SUITE 550, SAN JOSE, CA 95110
 T. 408-952-7900

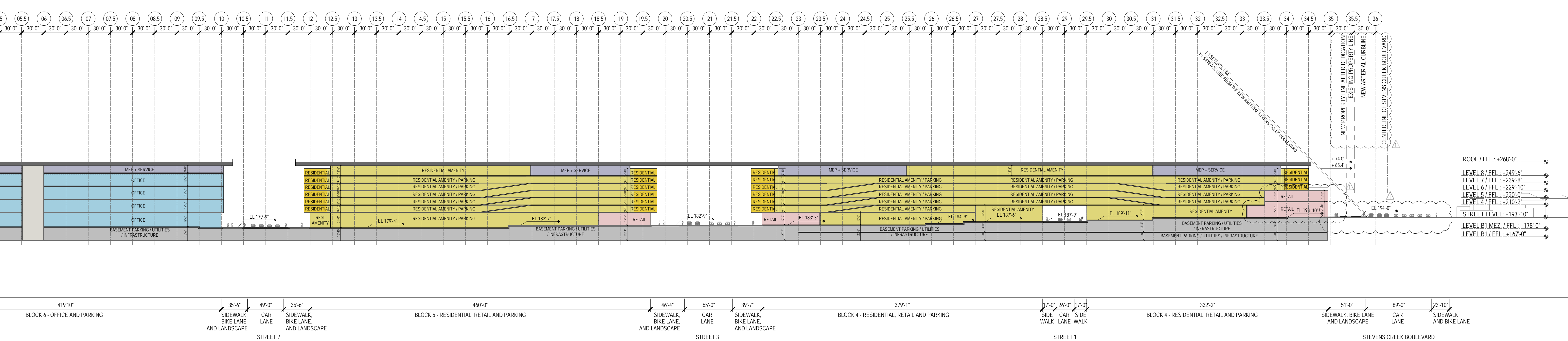
WASTE MANAGEMENT: CIN LITTLE INTERNATIONAL
 535 NORTH BRAND BLVD, STE 710 GLENDALE, CA 91203
 T. 626-441-7700



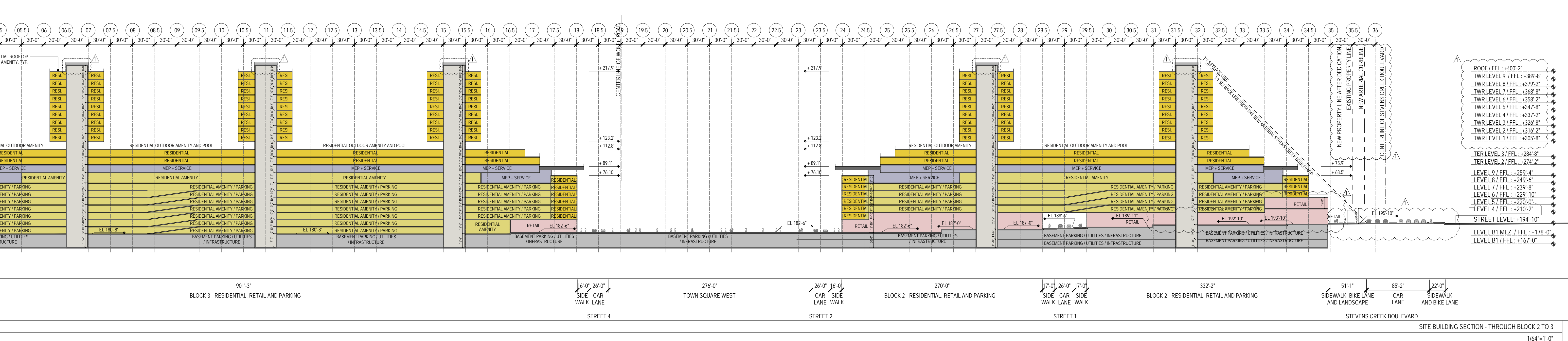
SITE BUILDING SECTION - BLOCK 11
 184'-1'-0"



SITE BUILDING SECTION - THROUGH BLOCK 9 TO 10
 184'-1'-0"



SITE BUILDING SECTION - THROUGH BLOCK 4 TO 6
 184'-1'-0"



SITE BUILDING SECTION - THROUGH BLOCK 2 TO 3
 184'-1'-0"

LEGEND

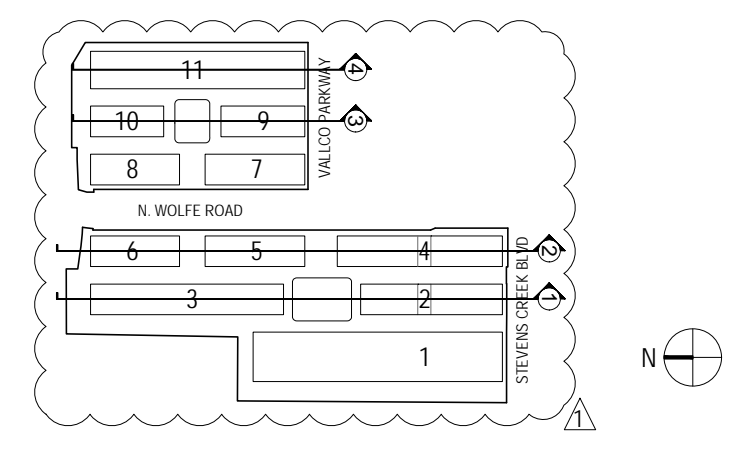
- OFFICE
- RESIDENTIAL
- RESIDENTIAL AMENITY
- RETAIL
- MEP / SERVICE
- PARKING
- CORE / CORRIDOR

NOT FOR CONSTRUCTION

DISCLAIMER
 THE ARCHITECT / ENGINEER SHALL HAVE NO RESPONSIBILITY FOR ANY LIABILITY, LOSS, COST, DAMAGE OR EXPENSE ARISING FROM OR RELATING TO ANY USE OF THIS DOCUMENT FOR ANY PURPOSE OTHER THAN ITS INTENDED PURPOSE. ON THIS PROJECT, THIS DOCUMENT IS TO BE CONSIDERED IN CONJUNCTION WITH ALL RELATED DOCUMENTATION. ANY DISCREPANCIES IDENTIFIED IN THIS DOCUMENT MUST BE REPORTED IMMEDIATELY TO THE ARCHITECT BEFORE PROCEEDING. CONTRACTORS MUST VERIFY ALL DIMENSIONS PRIOR TO PROCEEDING WITH ANY WORK. ONLY FIGURED DIMENSIONS ARE TO BE USED FOR VERIFICATION.

SB-35 DEVELOPMENT APPLICATION

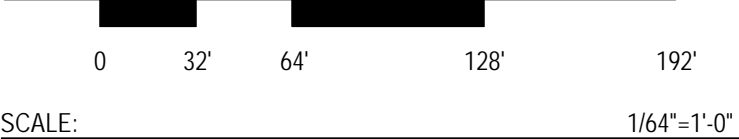
REV	DESCRIPTION	DATE
REV-0	SB-35 DEVELOPMENT APPLICATION	03/27/2018
REV-1	SB-35 APPLICATION REVISIONS	07/31/2018



ARCHITECTS PROJECT NUMBER: 708011

PROJECT PHASE: SB-35 DEVELOPMENT APPLICATION

IF THIS DRAWING IS NOT 36" X 48" IT IS A REDUCED PRINT. REFER TO GRAPHIC SCALE.



SCALE: 1/8" = 1'-0"

BUILDING SECTIONS

SHEET TITLE:

P-0832

SHEET NUMBER:

© 2018 RAFAEL VINOY ARCHITECTS P.C.

VALLCO TOWN CENTER

OWNER - VALLCO PROPERTY OWNER LLC
965 PAGE MILL ROAD, PALO ALTO, CA 94304
T. 650-344-1500

ARCHITECTURE - RAFAEL VINOLY ARCHITECTS
50 VANDAM STREET, NEW YORK, NY 10013
T. 212-924-5050

ARCHITECTURE - RAFAEL VINOLY ARCHITECTS
1033 N. HOLDEE ROAD, CUPERTINO, CA 95014
T. 408-627-7090

LANDSCAPE ARCHITECTURE - OLIN PARTNERSHIP LTD.
150 S. WINCHESTER BLVD, SUITE 200, CAMPSIDE, PA 19106
T. 214-440-0030

CIVIL - SANDIS CIVIL ENGINEERS SURVEYORS PLANNERS, INC.
1705 S. WINCHESTER BLVD, SUITE 200, CAMPSIDE, CA 95008
T. 408-636-0900

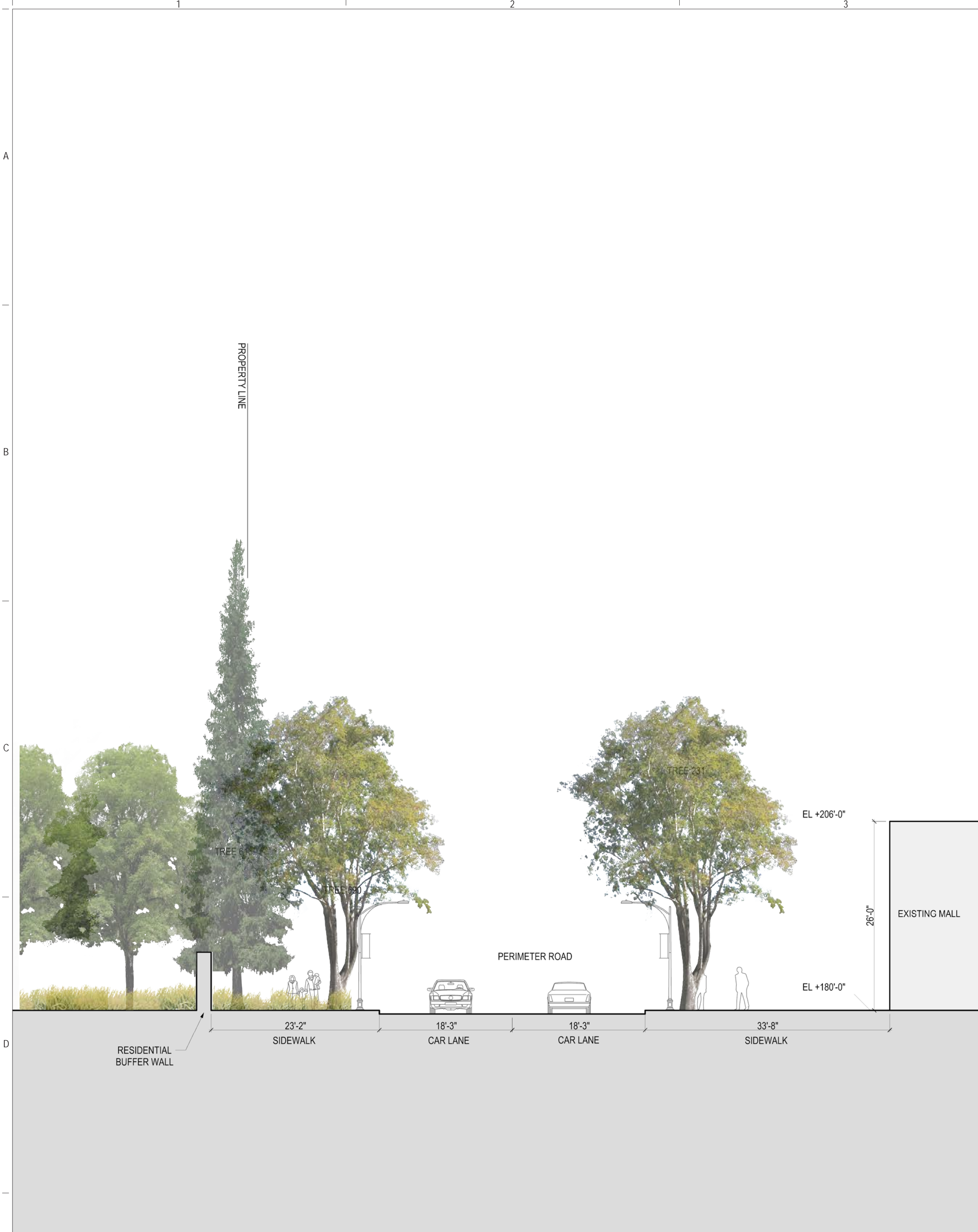
TRANSPORTATION ENGINEERING - ARUP NORTH AMERICA, LTD.
580 MISSION STREET, SUITE 700, SAN FRANCISCO, CA 94105
T. 415-557-9445

LIGHTING - ONE LUX STUDIO
158 WEST 20TH STREET, 10TH FLOOR, NEW YORK, NY 10011
T. 212-201-5790

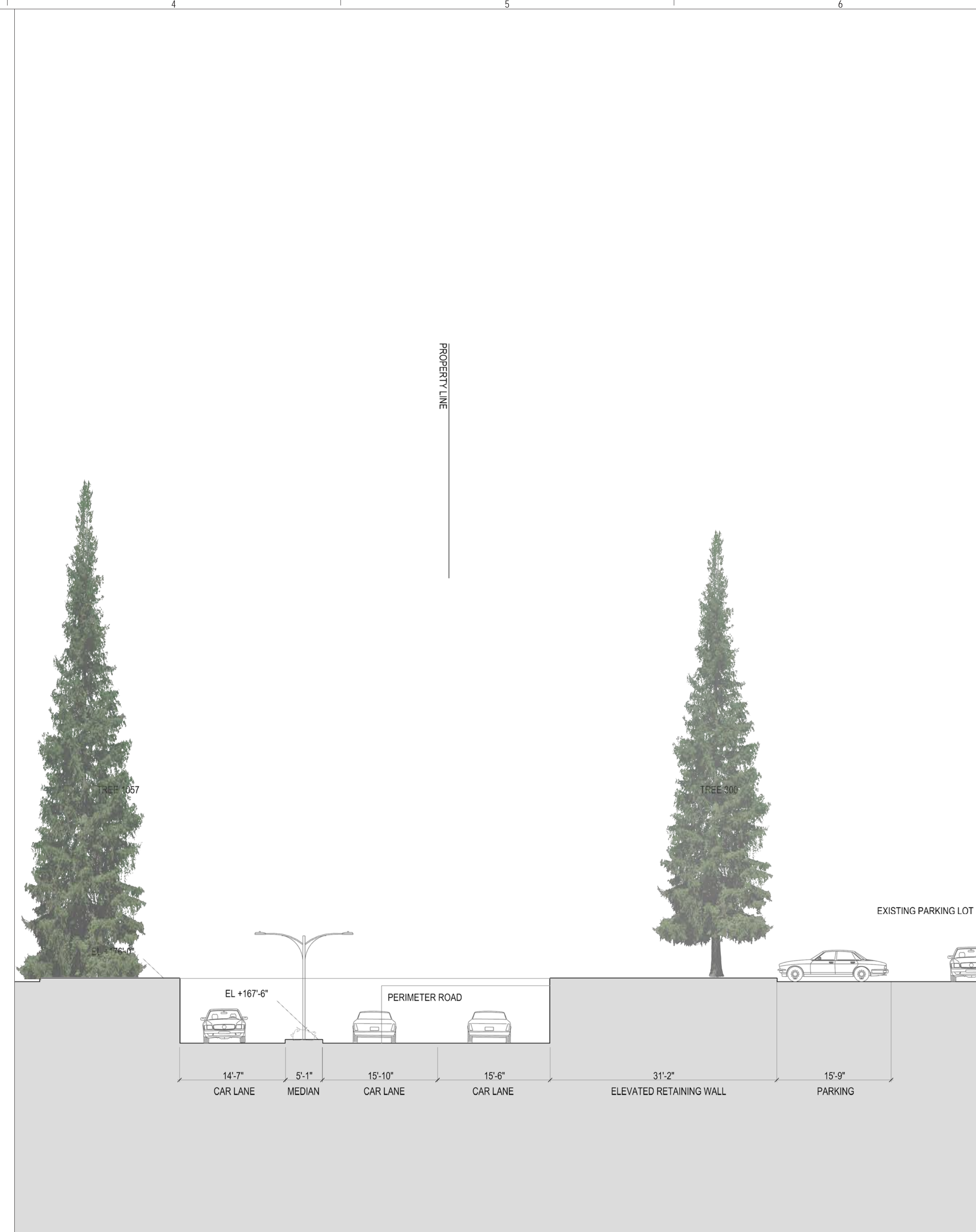
SIGNAGE - EXIT
1617 JFK BLVD, SUITE 1665, PHILADELPHIA, PA 19103
T. 215-561-1950

PARKING ENGINEERING - WATRY DESIGN, INC.
2099 GATEWAY PLACE, SUITE 550, SAN JOSE, CA 95110
T. 408-952-7000

WASTE MANAGEMENT - CINI LITTLE INTERNATIONAL
535 NORTH BRAND BLVD, STE 710 GLENDALE, CA 92103
T. 626-441-7700



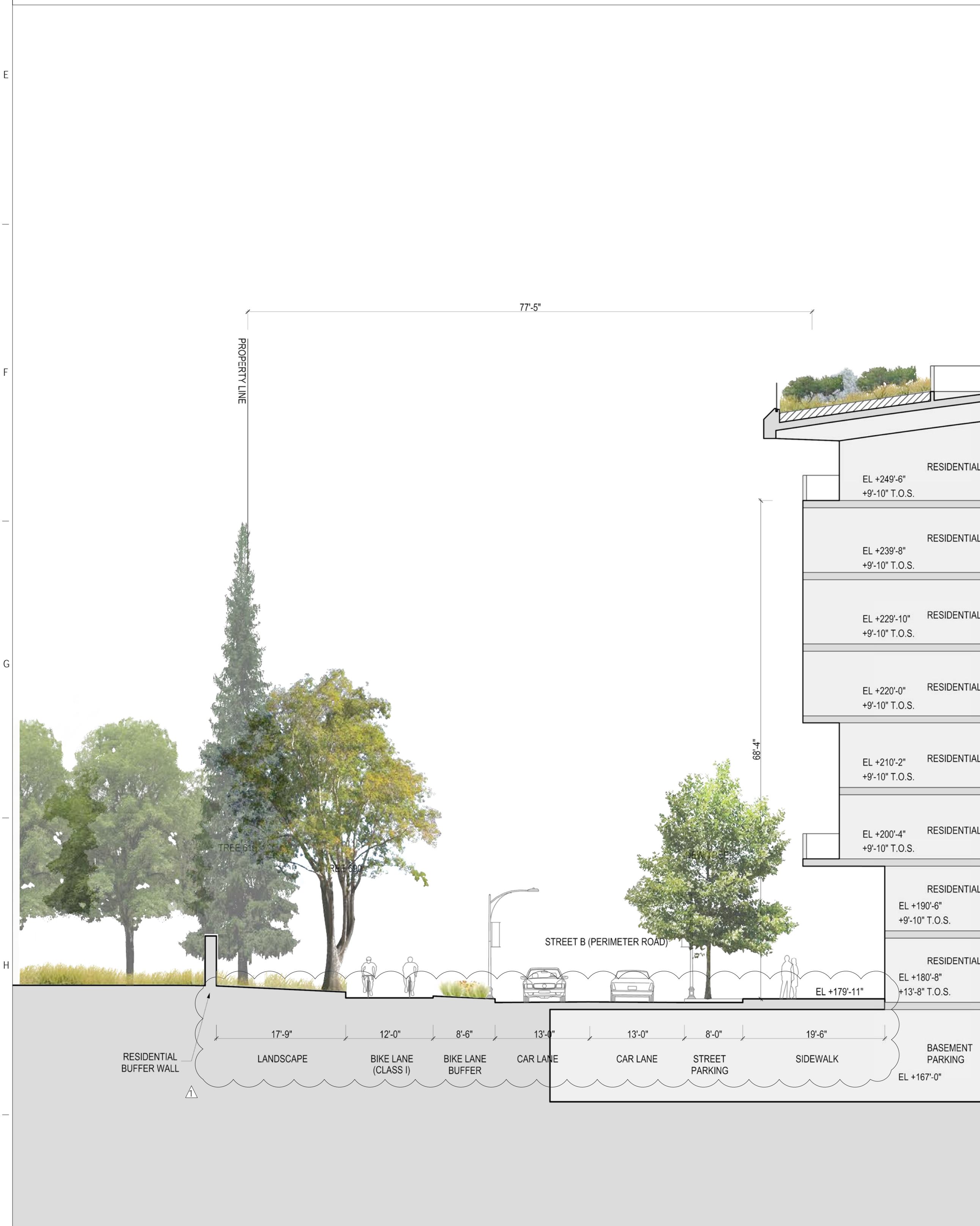
EXISTING STREET CONDITION - BLOCK 3
1/10" = 1'-0"



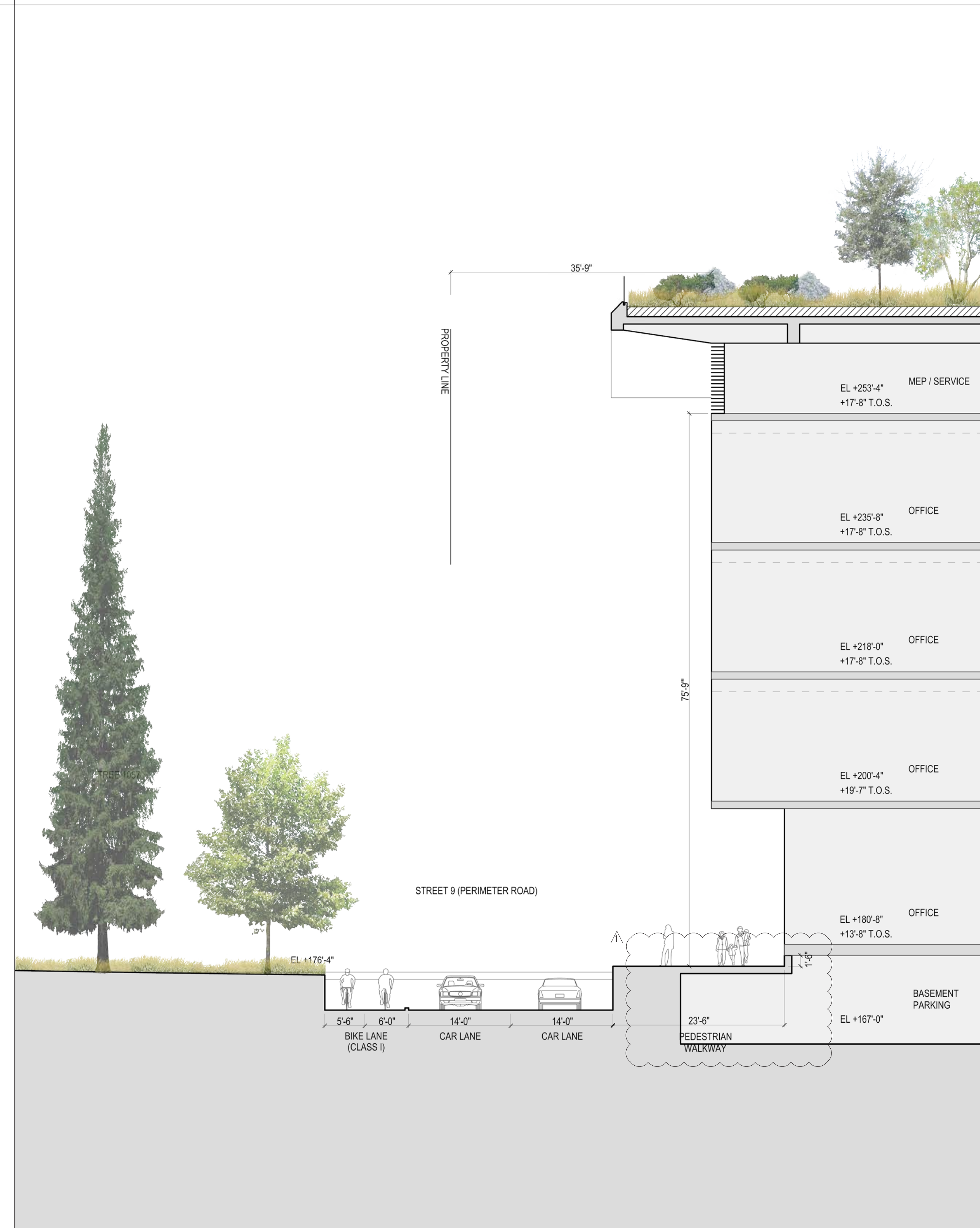
EXISTING STREET CONDITION - BLOCK 6
1/10" = 1'-0"



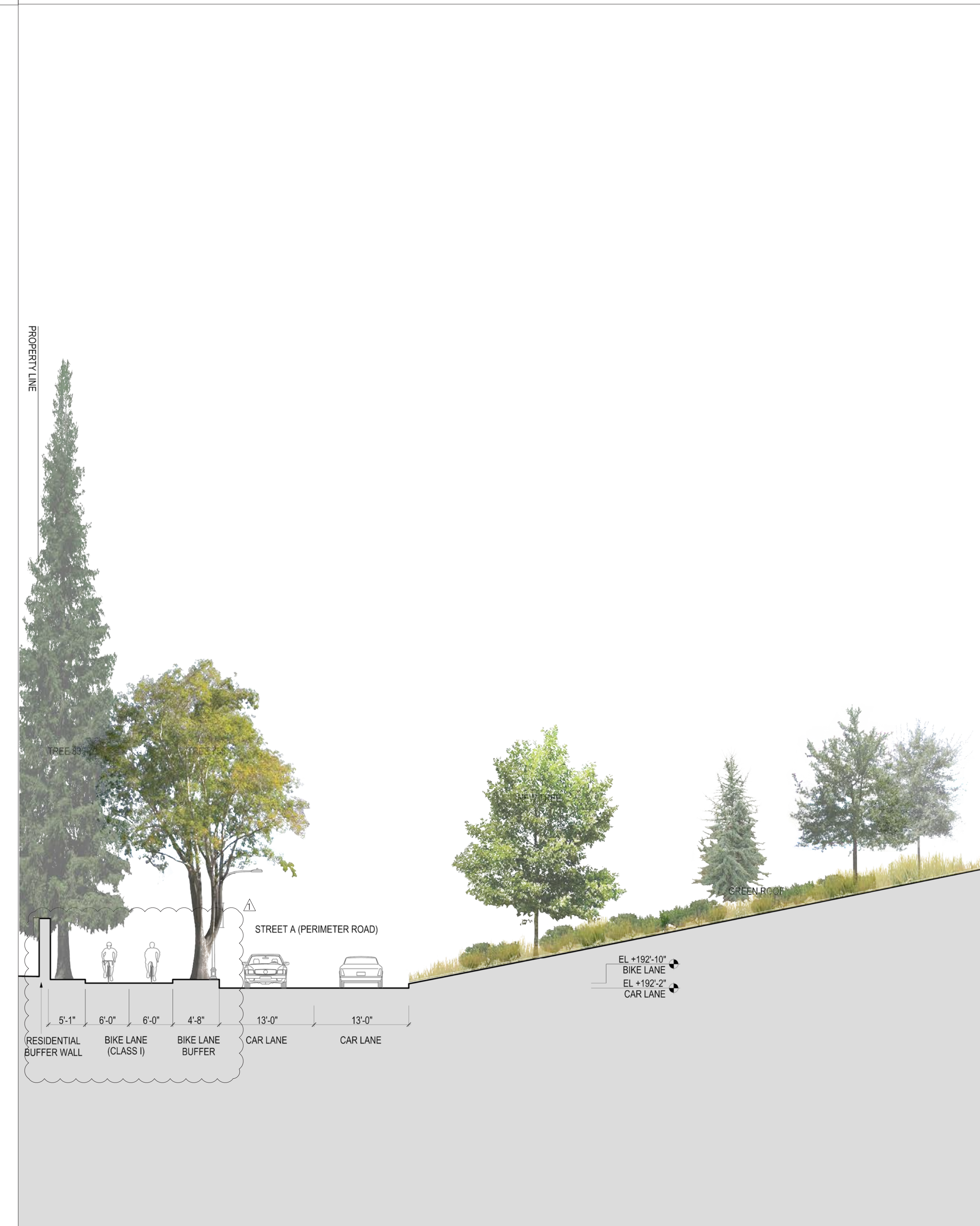
EXISTING STREET CONDITION - BLOCK 1
1/10" = 1'-0"



STREET IMPROVEMENT CONDITION - BLOCK 3
1/10" = 1'-0"



STREET IMPROVEMENT CONDITION - BLOCK 6
1/10" = 1'-0"



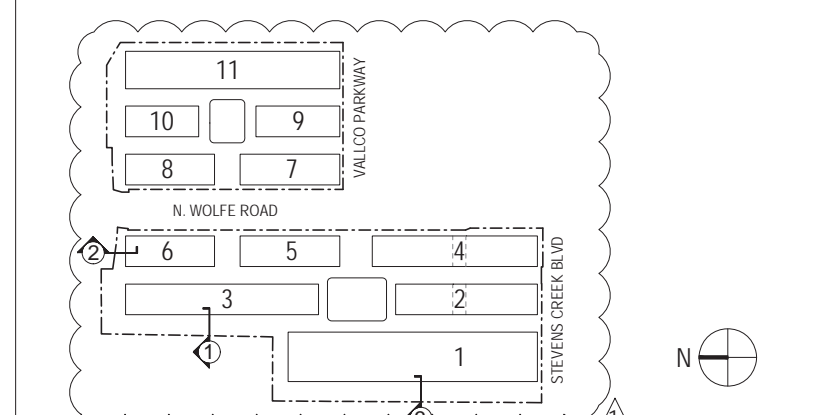
STREET IMPROVEMENT CONDITION - BLOCK 1
1/10" = 1'-0"

NOT FOR CONSTRUCTION

DISCLAIMER
THE ARCHITECT / ENGINEER SHALL HAVE NO RESPONSIBILITY FOR ANY LIABILITY, LOSS, COST, DAMAGE OR EXPENSE ARISING FROM OR RELATING TO ANY USE OF THIS DOCUMENT FOR ANY PURPOSE OTHER THAN ITS INTENDED PURPOSE ON THIS PROJECT. THIS DOCUMENT IS TO BE CONSIDERED IN CONJUNCTION WITH ALL RELATED DOCUMENTATION. ANY DISCREPANCIES IDENTIFIED IN THIS DOCUMENT MUST BE REPORTED IMMEDIATELY TO THE ARCHITECT BEFORE PROCEEDING. CONTRACTORS MUST VERIFY ALL DIMENSIONS PRIOR TO PROCEEDING WITH ANY WORK. ONLY FIGURED DIMENSIONS ARE TO BE USED FOR VERIFICATION.

SB-35 DEVELOPMENT APPLICATION

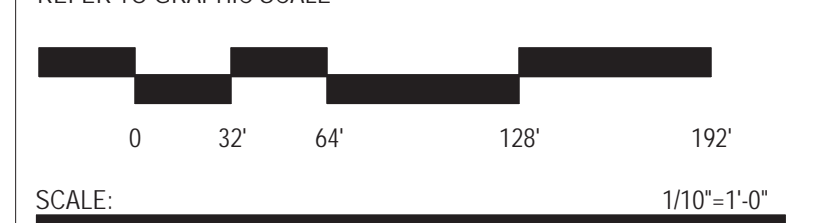
REV	DESCRIPTION	DATE
REV-0	SB-35 DEVELOPMENT APPLICATION	03/27/2018
REV-1	SB-35 APPLICATION REVISIONS	07/31/2018



KEY PLAN AND NORTH ARROW
ARCHITECTS PROJECT NUMBER: 708011

PROJECT PHASE: SB-35 DEVELOPMENT APPLICATION

IF THIS DRAWING IS NOT 36"x48" IT IS A REDUCED PRINT. REFER TO GRAPHIC SCALE.



ENLARGED BUILDING & STREET SECTIONS @ BOUNDARY CONDITIONS 1

SHEET TITLE:

P-0851

SHEET NUMBER: © 2018 RAFAEL VINOLY ARCHITECTS P.C.