

Types of Public Spaces

Public spaces support healthy and vibrant neighborhoods.

Public spaces provide **access to the outdoors** and **gathering places** for members of the community. The location, distribution, size, function, and role of these spaces vary in relation to contextual considerations.

Below are examples of public spaces. Place dots onto the types you would like to see on the Vallco Site.

Pocket Park

Small scale open space, serving the immediate neighborhood, available for informal activities in close proximity to neighborhood residences.

Too much concrete

Owner maintain & take care of private spaces



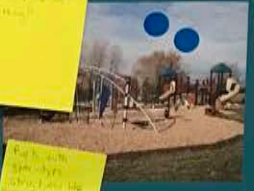
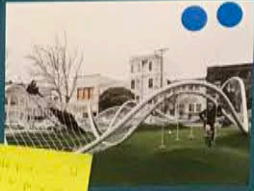
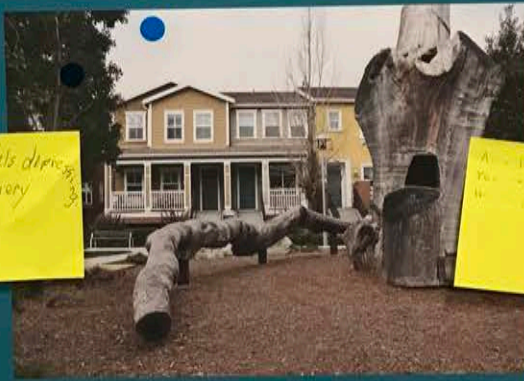
Playground

Small-scale open space designed and equipped for the recreation of children.

Yes, this is depressing. No idea as to how to fix it. Sissy Art.

This feels depressing. No greenery.

A nice little space of play for the children. No greenery though.



Pocket Plaza

Small-scale, open space located at street corners available for civic purposes and/or commercial activity, intended as intimate spaces for seating or dining into which commercial and neighborhood activity may spill.

Feels like a lovely space!

Public space, however, with a "third" design.

Feels like a lovely space!



Vallco Special Area
Specific Plan and Form-Based Code

Cupertino, CA
Public Charrette
April 2018

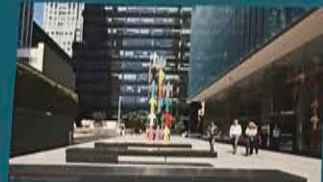


What Makes a Great Public Space?

Public plazas and squares help organize the structure of neighborhoods.

Public plazas and squares that are well distributed, varied in size, and varied in activities allow for a wide spectrum for **social interaction**, from intimate meetings with a **small group** of friends to **large organized gatherings** of the community, by providing the infrastructure for various daily activities, seasonal events, commerce, and public art.

Below are examples of public plazas and squares. Place dots onto the types you would like to see on the Vallco Site.



Mission Street Plaza San Francisco CA



Santana Row San Jose CA

Handwritten note: "This is a good example of a public space with a mix of uses and activities." (Yellow sticky note)



Mint Plaza San Francisco CA



100 Pine Urban Garden San Francisco CA



Pioneer Courthouse Portland OR



Director Park Portland OR



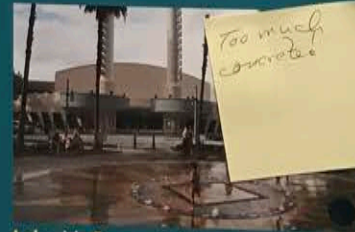
Bay Meadows San Mateo CA

Handwritten note: "Why is there only one bench? Should be more. Should be more seating. Should be more about real shopping mall?" (Yellow sticky note)

Handwritten note: "Not enough green space" (Orange sticky note)



Occidental Square Seattle WA



Lakeside Promenade Celebration FL

Handwritten note: "Too much concrete" (Yellow sticky note)

Handwritten note: "Please, more green (less concrete)" (Yellow sticky note)

Handwritten note: "None of these are park-like. They have too much concrete" (Yellow sticky note)

Handwritten note: "Probably like the idea of a park on the 'belly' side of the plaza. People like the idea of a park on the 'belly' side of the plaza." (Yellow sticky note)

Handwritten note: "Keep Community Center as public space" (Red sticky note)

Vallco Area
Specific Plan and Form-Based Code

Cupertino, CA

Public Charrette
April 2018

CUPERTINO

OPTICOS

© 2018 Opticos Design, Inc.

ace?

ds.

inding

Examples of Public Art

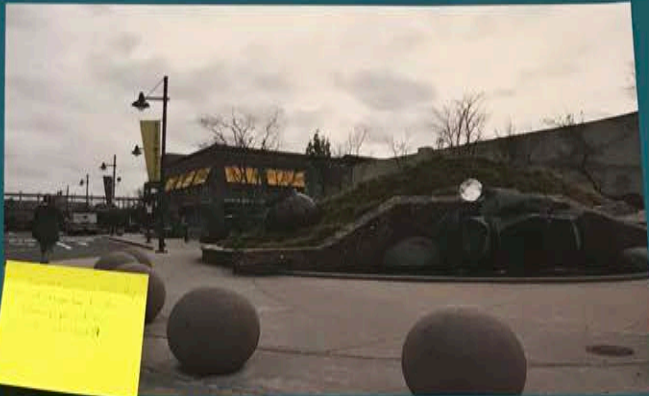
Public art invites and stimulates interaction and stewardship.

Good public space can create a **setting for the community around artwork**, attracting **activities** that make it an evolving and flexible multi-purpose **destination**.

Below are examples of public art. Place dots onto the types you would like to see on the Vallco Site.



Millennium Park Chicago IL



Emeryville Shellmound Memorial Emeryville CA



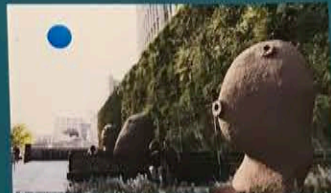
Olympic Sculpture Park Seattle WA



Olympic Sculpture Park Seattle WA



UCSF Mission Bay San Francisco CA



Mission Street Plaza San Francisco CA

public art
not good
but it's a
good
example of



Cali Mill Plaza Cupertino



Gordon Square Cleveland OH



Brooklyn Bridge Park Brooklyn NY

Change the
Alleyway
PLANT TREES

More public
art please

Remove the
concrete

COMMUNITY
MADE
ART
PLEASE

ugly

It's
ugly

Less pavement
Yes - reduce concrete
Take a look at the
parking areas along
Main St. They are
too flat. They are
circular and have
brick work, etc.

Too much
concrete. No
trees.

Remove ART!
None or three
at the most
Ditto!

It's the only
way to
save the
park



Vallco Specific Plan and Regional Code

Cupertino, CA
Public Charrette
April 2018



© 2018 Cupertino Charrette

Types of Public Spaces

We need to keep the Street Trees & Green Lawns

Make sure there is lots of green all over

Restaurants open until midnight

Similar to Ferry Building in SF or a Farmers Market

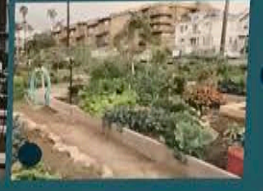
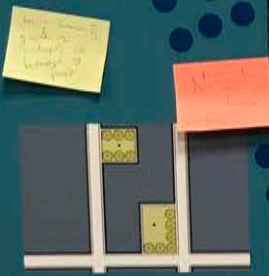
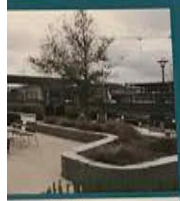
Public spaces support healthy and vibrant neighborhoods.

They provide **access to the outdoors** and **gathering places** for members of the community. The distribution, size, function, and role of these spaces vary in relation to contextual considerations.

Below are examples of public spaces. Place dots onto the types you would like to see on the Vallco Site.

Community Garden

Small-scale open space designed as a grouping of garden plots available to nearby residents for small-scale cultivation.



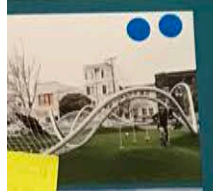
Community Garden

Community Garden

Community Garden

Plaza

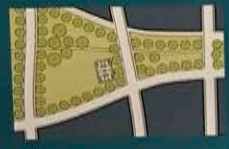
Community-wide focal point primarily for civic purposes and commercial activities.



Plaza

Green

Open space available for unstructured and limited amounts of structured recreation.



Green

Types of Frontages

The frontage is where a building engages the public realm.

Frontages are the components of a building that provide an important **transition and interface** between the **public realm** (street and sidewalk) and the **private realm** (yard or building).

Below are examples of frontages. Place dots onto the types you would like to see on the Vallco Site.

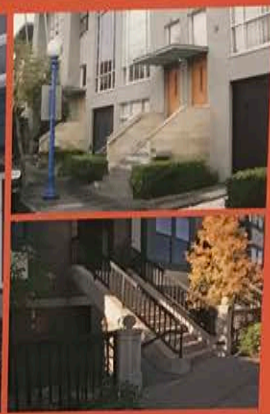
DONT REMOVE THE WALLS THAT SEPARATING THE VILLAS FROM SINGLE FAMILY HOME. WE WANT THEM TO BE THERE

Stoop

With steps lined with potted plants, railings dressed with seasonal decorations, and a welcome mat to greet guests, the stoop is a canvas to personalize an entrance.

The stoop is appropriate for residential uses with small setbacks. The stoop is elevated above the sidewalk, providing privacy along the sidewalk-facing rooms.

ADA Access?

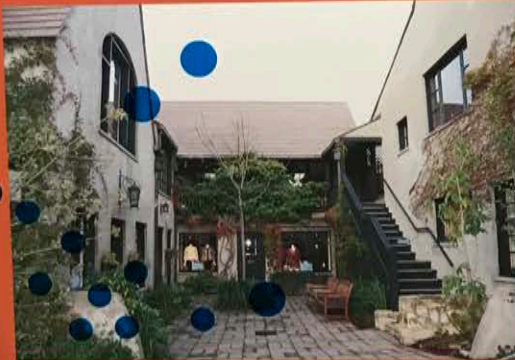


Forecourt

Enclosed on three sides by the building and open on one side to the sidewalk and street, the forecourt is a shared, safe retreat from the street where building users can socialize and building users can interact.

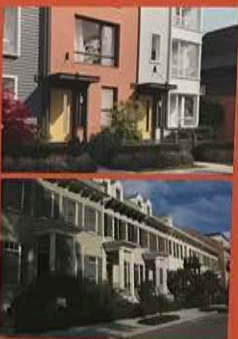
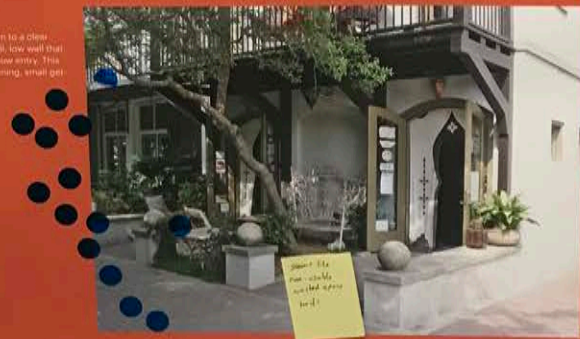
Paved area very difficult for walkers, wheelchairs, high heels, people with balance issues.

Yes, but pavers add flavor like small European village



Dooryard

The dooryard extends the private realm to a clear frontage boundary enclosed by a brick, low wall that opens to the street and sidewalk to allow entry. This allows use of outdoor space for gardening, small get-togethers, and more.



Vallco Special Area Specific Plan and Form-Based Code

Cupertino, CA
Public Character
April 2018



What Makes a Great Street?

Think of your favorite cities or streets that you like to walk through.

Great streets not only move people from one place to another, they provide **interesting and enticing** public spaces for businesses to **thrive** and people to feel **safe and welcome**. They are the city's biggest civic space and serve as outdoor rooms where **social interaction** occurs.

Below are certain elements common to great streets. Place dots underneath elements you feel are most important.



Invites People and Businesses

The most important component of a great street is the people and local culture who make it a unique and interesting place to be - through an exciting energy and appealing shopfronts and businesses.

St. Petersburg gets work when traffic slows but never blocks it - people without big truck traffic.



Supports Multi-Modal Design

The street design should balance all user needs, including driving, transit, walking, cycling, parking and drop-offs.



Connects Various Networks

A great street is part of a larger network of streets that connect and provide many route options supporting access to transit and encouraging pedestrian and bicycle travel.



Promotes Safety

Great streets make all users feel safe. Pedestrians and bicyclists are protected through good design, while allowing drivers to feel comfortable at slow speeds.



Embraces Building Variety

The organization of a great street embraces diversity in building form, allowing for a range of buildings to strengthen the fabric of the community.



Integrates Sustainability

Environmental sustainability is promoted by water reuse, minimizing runoff, reducing heat island effect, and responding to local climate.

Needs a way for people who parked to get to the sidewalk via going through the holes!



Utilizes Street Trees

Street trees add shade and interest while also providing visibility for businesses and vehicles.



Enhances Social Interaction

Interesting buildings and spaces should encourage community building through social activities and human interaction.

Appropriately... you can have a lot of... it's really good.



Creates Public Spaces

A variety of public spaces create "outdoor rooms" that enhance adjacent buildings and generate a positive environment for a variety of activities.

Plants to vary out for 10-20 year old 21-25 Single



Special Plan and Code

Public Comment April 2018

OPTICOS

Types of Frontages

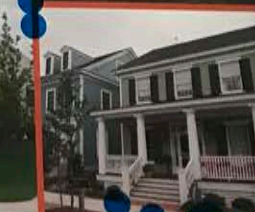
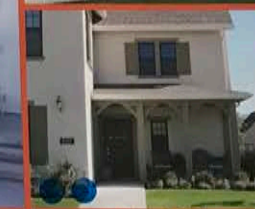
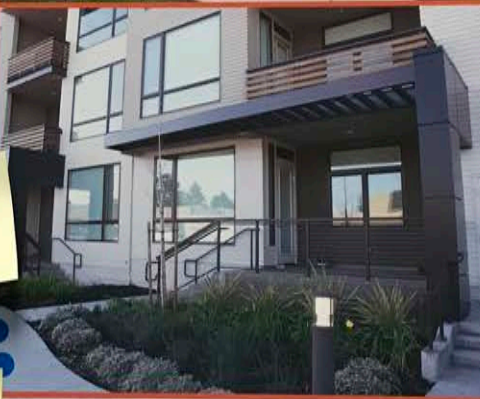
The frontage is where a building engages the public realm.

Frontages are the components of a building that provide an important **transition and interface** between the **public realm** (street and sidewalk) and the **private realm** (yard or building).

Below are examples of frontages. Place dots onto the types you would like to see on the Vallco Site.

Porch

Sheltered from rain, wind, and sun, the porch is an outdoor room where people can gather and indoor activities can transition from the inside to outside. The main facade of the building has a small-to-medium setback from the frontage line. The resulting front yard is typically very small and can be defined by a fence or hedge to primarily maintain the edge of the street.



N. [unclear]

How all feel like different places

Design [unclear]

Very ugly aesthetic. Don't like the blue color!

Beautiful modern [unclear]

Weird Roofline.

All of these are nice

Design [unclear]

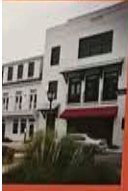


Vallco Special Area Specific Plan and Form-Based Code

Cupertino, CA
Public Charrette
April 2018

ugh.
aces for
outdoor

portant.



ding Variety
at street embraces
allowing for a range of
fabric of the community.



aces
"outdoor rooms"
and generate a
of activities.

OPTICOS

OPTICO

Types of Frontages

Need Heart for the City from Long Street Taxes to Slain

The city has no obligation whatsoever to ensure any property owner can have ROI under any market condition. Real Estate is not a profession. Any investment has risks & rewards.

The property owner should make a decision to invest. It's not the city's job to support and density until he can profit.

\$30 million he paid for Vallco is the market value. The frontage built was sold separately with a single lot per block. They did not have a master plan to make profit. The real estate value dropped probably already. Doubled or more since that time. How much more profit do they want to make?

The frontage is where a building engages the public realm.

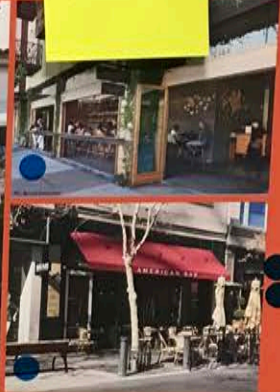
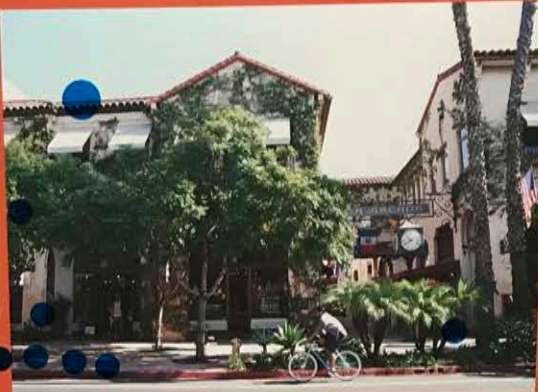
Frontages are the components of a building that provide an important **transition and interface** between **public realm** (street and sidewalk) and the **private realm** (yard or building).

_____ are examples of frontages. Place dots onto the types you would like to see on the Vallco Site.

GREEN WALL

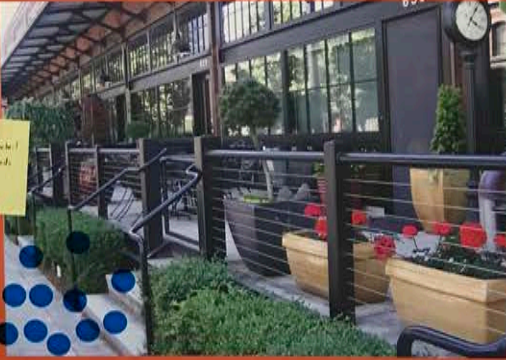
Front

Frontages activate the public realm, attracting pedestrians, showcasing displays, and providing a variety of material and textural variety. Frontages allow substantial transparency, allowing interior through large, frequent windows which are often shaded by an awning.



Terrace

Steps, railings, and plantings define the Frontage boundary, separating the elevated gathering area from the block of the sidewalk and street. Terraces are meant to provide entry to buildings and gathering spaces for outdoor dining, but are not meant to provide general circulation in place of a sidewalk.



Gallery

The gallery's columns and deck above provide a semi-protected setting for shops and pedestrians to interact.



Types of Buildings: Medium Scale

Need to look at retail buildings. These do not represent retail buildings. All buildings.

Types of buildings are defined first by form, then by function.

Buildings are defined by form (configuration and size), then by function (use). Often found on or near main streets, **medium scale buildings** are typically **5 to 8 stories** and can support a mix of uses.

Below are examples of medium scale buildings. Place dots onto the types you would like to see on the Vallco Site.



Types of Buildings: Large Scale

Types of buildings are defined first by form, then by function.

Buildings are defined by form (configuration and size), then by function (use). **Large scale buildings** are typically **13+ stories** and vary in form depending on use mix and podium type.

B of large scale buildings. Place dots onto the types you would like to see at the Vallco Site.

Small
Vallco
City

Vertical
Forest-
Milan
Missing: big
trees

None of
these because
they are ugly
and not unique
or innovative

If buildings
need to be
tall - make it
the office buildings

Too tall
for
the
site

Too tall -
too big -
very ugly
Agree!

Anybody can
do that
it's not
innovative

looks interesting

very tall
building
in
center
with
some
open
space
around
it
from
this
angle

Get
shorter
than
the
ones
around
it

Simple and clean
are beautiful!
DIT

To have the
large scale buildings
of other forms
public transportation

and buildings
with
public
transportation

Absolutely
No Buildings
over 6 stories
Agree to height
of 6 stories
if transit needs
parking and more
space built in area

Not
taller
than
the
ones
around

Don't
build
tall
buildings
if
required
public
transportation

Agree

Make rough office
open into towers (all
and some). Not short and
open spaced out

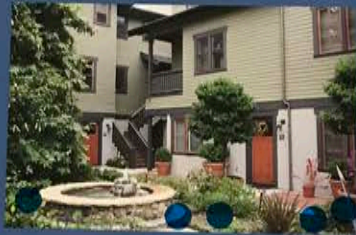
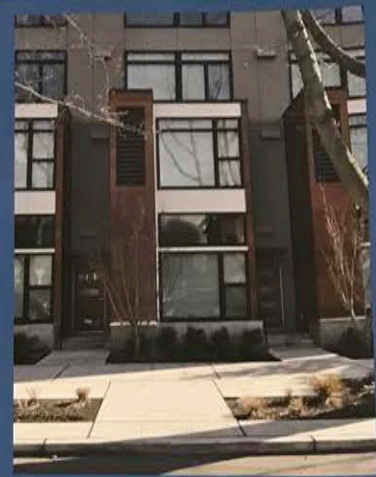


Types of Buildings: Small Scale

Types of buildings are defined first by form, then by function.

Buildings are defined by form (configuration and size), then by function (use). **Small scale buildings** are typically 2 to 4 stories with various individual and shared entrance options.

Below are examples of small scale buildings. Place dots onto the types you would like to see on the Vallico Site.



Needs separate

No missing greenery
Yes!

2 stories
Color
Light (F-10)

Even more trees
In the bay area
DIT!



Types of Buildings

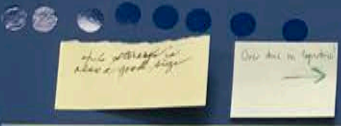
Diverse buildings are critical to vibrant urban places.

Buildings in Cupertino range from detached single family homes to mid-rise condominiums. **Appropriate buildings** within the Vallco site range from **small buildings** such as townhouses and courtyard apartments, to **medium buildings** such as main street building and mixed use mid-rise buildings and **potentially large buildings** that might include high-rise buildings.



Small Scale

Small scale buildings are typically 2 to 4 stories with various individual and shared entrance options. Types of buildings include townhouses, live/work, large multiplexes, and courtyard buildings.

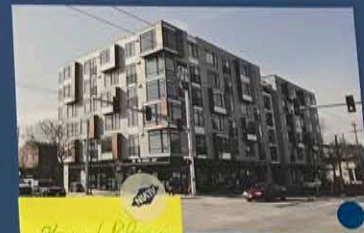


Medium Scale

Often found on or near main streets, medium scale buildings are typically 5 to 12 stories and can support a mix of uses. Types of buildings include main street buildings and mid-rise buildings.

5-6 stories, not 5-12!
A picture is good
Open a new design
mix of materials
Don't want to see
1960s design language
help

interesting design
building
could see to see
this is a building



How I Please
don't see
this
↑ ↑ ↑

Large Scale

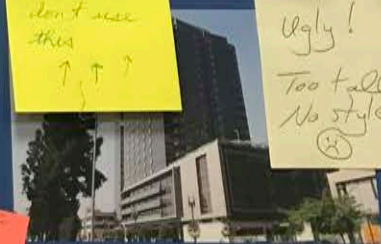
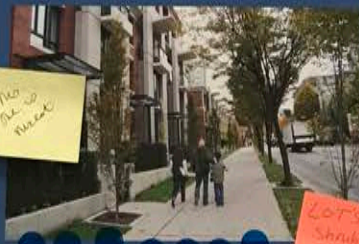
Large scale buildings are typically 13 to 39 stories and vary in form depending on use mix and podium type. Types of buildings include high-rise buildings.

Economic consultant
Stephen Lantieri advised
that it's hard to make
mixed use retail work.
Some developers know how
to build housing, but not
in ground floor retail.
The building designed to fail
due to access, visibility is
poor.
Economic consultant
Stephen Lantieri advised
that a shopping mall
perhaps offering good
experience will draw in
customers.
Horizontal mixed use
with retail building next
to residential buildings
will be better than retail
retail.

This type is →
smaller scale
easier to integrate

the
is so
mixed

The type of
building could
be beautiful on
a large scale



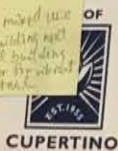
Ugly!
Too tall
No style
☹️

LOTS of
Shrubbery
+ trees
!!

Vallco Special Area Specific Plan and Form-Based Code

Cupertino, CA

Public Charrette
April 2018



© 2018 Opticos Design