

OWNER - VALLCO PROPERTY OWNER LLC.
955 PAGE MILL ROAD, PALO ALTO, CA 94304
T. 650-344-1500

ARCHITECTURE - RAFAEL VINOLY ARCHITECTS
50 VANDAM STREET, NEW YORK, NY 10013
T. 212-694-0000

ARCHITECTURE - RAFAEL VINOLY ARCHITECTS
1033 N. WOLFE ROAD, CUPERTINO, CA 95014
T. 408-627-7000

LANDSCAPE ARCHITECTURE - OLIN PARTNERSHIP LTD.
150 S. INDEPENDENCE MALL, W. SUITE 1123, PHILADELPHIA, PA 19106
T. 215-440-0000

CIVIL - SANDS CIVIL ENGINEERS SURVEYORS PLANNERS, INC.
1700 S. WINCHESTER BLVD, SUITE 200, CAMPBELL, CA 95008
T. 408-358-5000

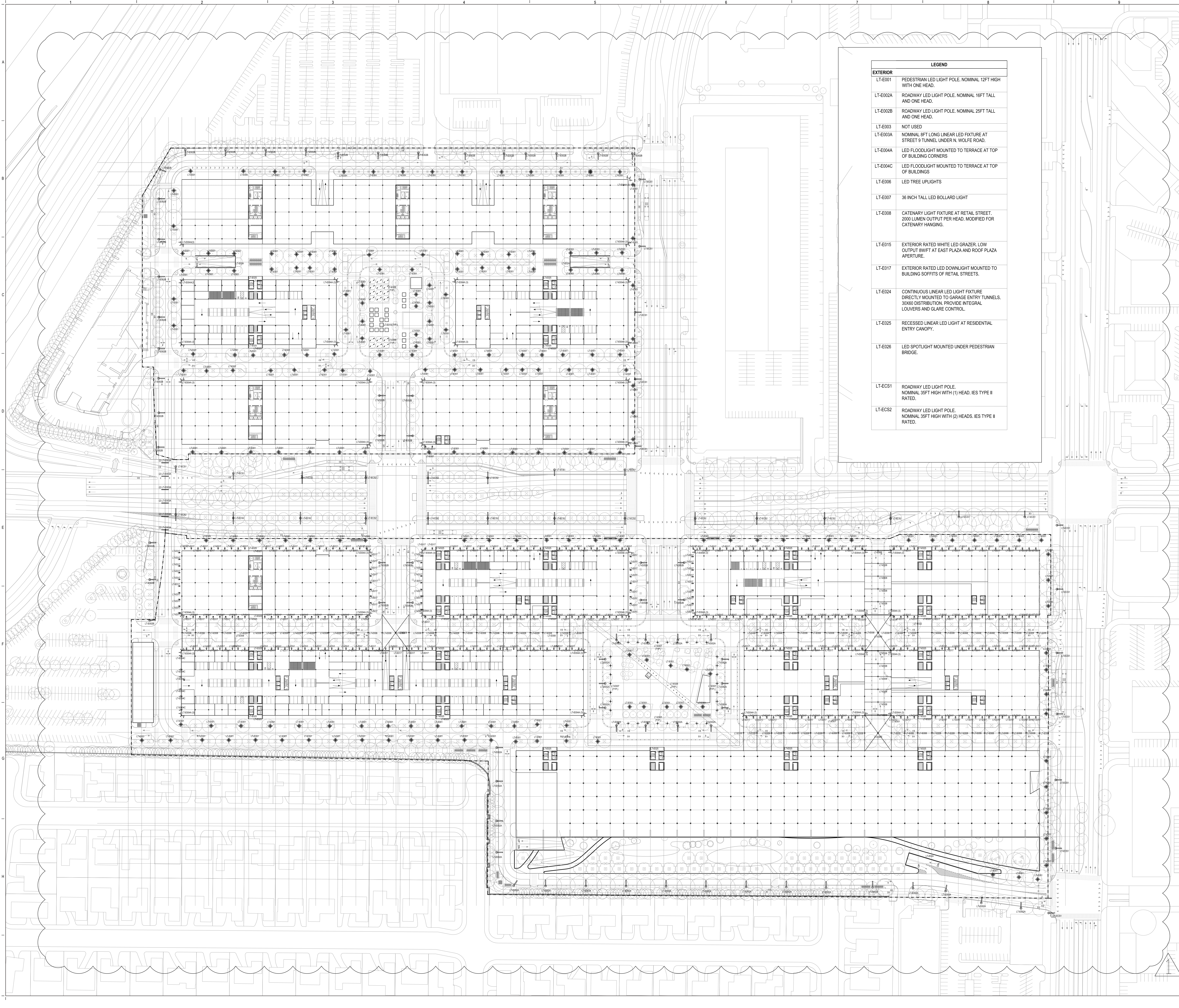
TRANSPORTATION ENGINEERING - ARUP NORTH AMERICA, LTD.
500 MISSION STREET, SUITE 700, SAN FRANCISCO, CA 94105
T. 415-957-5445

LIGHTING - ONE LUX STUDIO
158 WEST 29TH STREET, 10TH FLOOR, NEW YORK, NY 10001
T. 212-201-5700

SIGNAGE - EXIT
1617 39th BLVD, SUITE 1665, PHILADELPHIA, PA 19103
T. 215-561-1950

PARKING ENGINEERING - WATRY DESIGN, INC.
2099 GATEWAY PLACE, SUITE 500, SAN JOSE, CA 95110
T. 408-392-7000

LEGEND	
EXTERIOR	
LT-E001	PEDESTRIAN LED LIGHT POLE, NOMINAL 12FT HIGH WITH ONE HEAD.
LT-E002A	ROADWAY LED LIGHT POLE, NOMINAL 16FT TALL AND ONE HEAD.
LT-E002B	ROADWAY LED LIGHT POLE, NOMINAL 25FT TALL AND ONE HEAD.
LT-E003	NOT USED
LT-E003A	NOMINAL 8FT LONG LINEAR LED FIXTURE AT STREET 9 TUNNEL UNDER N. WOLFE ROAD.
LT-E004A	LED FLOODLIGHT MOUNTED TO TERRACE AT TOP OF BUILDING CORNERS
LT-E004C	LED FLOODLIGHT MOUNTED TO TERRACE AT TOP OF BUILDINGS
LT-E006	LED TREE UPLIGHTS
LT-E007	36 INCH TALL LED BOLLARD LIGHT
LT-E008	CATENARY LIGHT FIXTURE AT RETAIL STREET. 2000 LUMEN OUTPUT PER HEAD, MODIFIED FOR CATENARY HANGING.
LT-E015	EXTERIOR RATED WHITE LED GRAZER, LOW OUTPUT SWIFT AT EAST PLAZA AND ROOF PLAZA APERTURE.
LT-E017	EXTERIOR RATED LED DOWNLIGHT MOUNTED TO BUILDING SOFFITS OF RETAIL STREETS.
LT-E024	CONTINUOUS LINEAR LED LIGHT FIXTURE DIRECTLY MOUNTED TO GARAGE ENTRY TUNNELS. 30X60 DISTRIBUTION, PROVIDE INTEGRAL LOUVERS AND GLARE CONTROL.
LT-E025	RECESSED LINEAR LED LIGHT AT RESIDENTIAL ENTRY CANOPY.
LT-E026	LED SPOTLIGHT MOUNTED UNDER PEDESTRIAN BRIDGE.
LT-EC1	ROADWAY LED LIGHT POLE, NOMINAL 35FT HIGH WITH (1) HEAD, IES TYPE II RATED.
LT-EC2	ROADWAY LED LIGHT POLE, NOMINAL 35FT HIGH WITH (2) HEADS, IES TYPE II RATED.

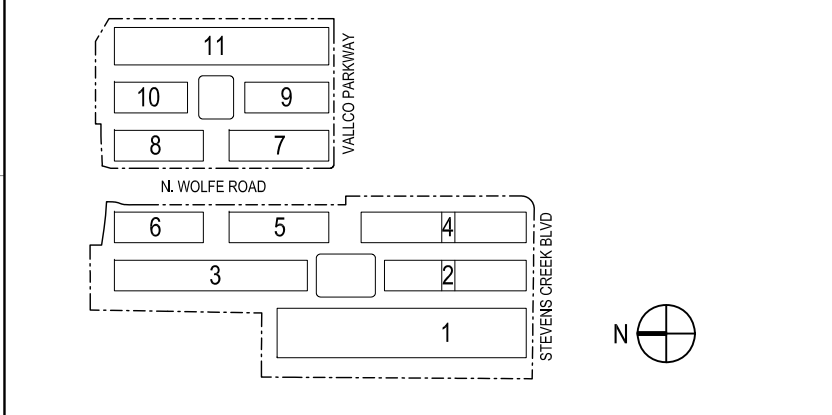


NOT FOR CONSTRUCTION

DISCLAIMER
THE ARCHITECT/ENGINEER SHALL HAVE NO RESPONSIBILITY FOR ANY LIABILITY, LOSS, COST, DAMAGE OR EXPENSE ARISING FROM OR RELATING TO ANY USE OF THIS DOCUMENT FOR ANY PURPOSE OTHER THAN ITS INTENDED PURPOSE ON THIS PROJECT. THIS DOCUMENT IS TO BE CONSIDERED IN CONJUNCTION WITH ALL RELATED DOCUMENTATION. ANY DISCREPANCIES IDENTIFIED IN THIS DOCUMENT MUST BE REPORTED IMMEDIATELY TO THE ARCHITECT BEFORE PROCEEDING. CONTRACTORS MUST VERIFY ALL DIMENSIONS PRIOR TO PROCEEDING WITH ANY WORK. ONLY FIGURED DIMENSIONS ARE TO BE USED FOR VERIFICATION.

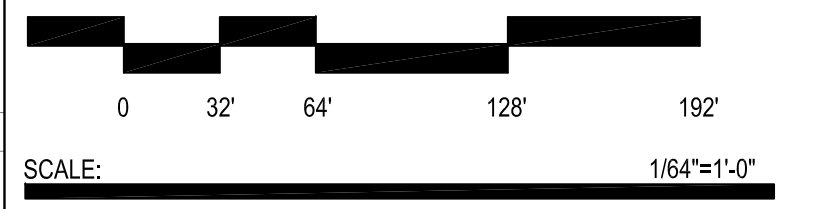
SB-35 DEVELOPMENT APPLICATION

REV	DESCRIPTION	DATE
REV.1	SB-35 DEVELOPMENT APPLICATION	03/27/2018
REV.1	SB-35 APPLICATION REVISIONS	08/22/2018



KEY PLAN AND NORTH ARROW
ARCHITECTS PROJECT NUMBER 708011

PROJECT PHASE SB-35 DEVELOPMENT APPLICATION
IF THIS DRAWING IS NOT 36"X48" IT IS A REDUCED PRINT. REFER TO GRAPHIC SCALE



EXTERIOR LIGHTING PLAN - STREET LEVEL

SHEET TITLE
P-0701
SHEET NUMBER

VALLCO

TOWN CENTER PROJECT

OWNER - VALLCO PROPERTY OWNER LLC
 965 PAGE MILL ROAD, PALO ALTO, CA 94304
 T. 650-948-1500

ARCHITECTURE - RAFAEL VINOLY ARCHITECTS
 50 VANDAM STREET, NEW YORK, NY 10013
 T. 212-924-6500

ARCHITECTURE - RAFAEL VINOLY ARCHITECTS
 1033 N. HOLTE ROAD, GILBERT, CA 95024
 T. 408-827-7900

LANDSCAPE ARCHITECTURE - OLIN PARTNERSHIP LTD.
 100 S. INDEPENDENCE MALL, W. SUITE 1103, PHILADELPHIA, PA 19106
 T. 215-440-0030

CIVIL - SANDIS CIVIL ENGINEERS SURVEYORS PLANNERS, INC.
 1700 S. WINCHESTER BLVD, SUITE 200, CAMPBELL, CA 95008
 T. 408-436-0900

TRANSPORTATION ENGINEERING - ARUP NORTH AMERICA, LTD.
 560 MISSION STREET, SUITE 700, SAN FRANCISCO, CA 94105
 T. 415-667-9445

LIGHTING - ONE LUX STUDIO
 158 WEST 29TH STREET, 10TH FLOOR, NEW YORK, NY 10001
 T. 212-205-6750

SIGNAGE - EXIT
 1617 JFK BLVD, SUITE 1665, PHILADELPHIA, PA 19103
 T. 215-626-1190

PARKING ENGINEERING - WATRY DESIGN, INC.
 2099 GATEWAY PLACE, SUITE 550, SAN JOSE, CA 95110
 T. 408-330-7900

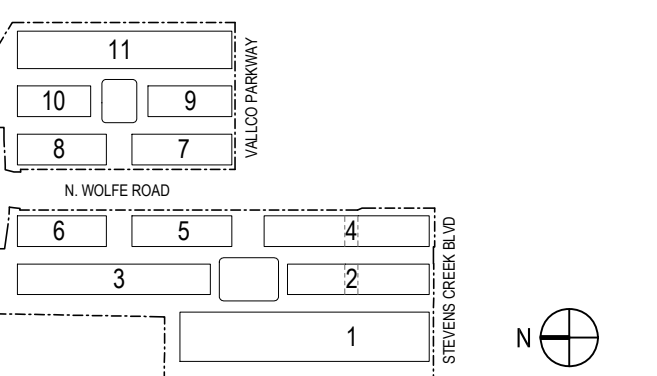
LEGEND	
EXTERIOR	
LT-E001	PEDESTRIAN LED LIGHT POLE, NOMINAL 12FT HIGH WITH ONE HEAD.
LT-E009	30 INCH TALL LED BOLLARD LIGHT ALONG PRIMARY PATH ON ROOF.
LT-E014	EXTERIOR RATED WHITE LED GRAZER, HIGH OUTPUT 15W/FT AT ROOF EDGE.
LT-E015	EXTERIOR RATED WHITE LED GRAZER, LOW OUTPUT 8W/FT AT EAST PLAZA AND ROOF PLAZA APERTURE.
LT-E027	SUBMERSIBLE LINEAR LED AT AMENITY ROOF POOL.
LT-E028	LINEAR STEP LIGHT MOUNTED AT 18 INCH HIGH OF BRIDGE.

NOT FOR CONSTRUCTION

DISCLAIMER
 THE ARCHITECT/ENGINEER SHALL HAVE NO RESPONSIBILITY FOR ANY LIABILITY, LOSS, COST, DAMAGE OR EXPENSE ARISING FROM OR RELATING TO ANY USE OF THIS DOCUMENT FOR ANY PURPOSE OTHER THAN ITS INTENDED PURPOSE ON THIS PROJECT. THIS DOCUMENT IS TO BE CONSIDERED IN CONJUNCTION WITH ALL RELATED DOCUMENTATION. ANY DISCREPANCIES IDENTIFIED IN THIS DOCUMENT MUST BE REPORTED IMMEDIATELY TO THE ARCHITECT BEFORE PROCEEDING. CONTRACTORS MUST VERIFY ALL DIMENSIONS PRIOR TO PROCEEDING WITH ANY WORK. ONLY FIGURED DIMENSIONS ARE TO BE USED FOR VERIFICATION.

SB-35 DEVELOPMENT APPLICATION

REV	DESCRIPTION	DATE
REV-0	SB-35 DEVELOPMENT APPLICATION	03/27/2018
REV-1	SB-35 APPLICATION REVISIONS	08/22/2018



KEY PLAN AND NORTH ARROW

ARCHITECTS PROJECT NUMBER: 708011

PROJECT PHASE: SB-35 DEVELOPMENT APPLICATION

IF THIS DRAWING IS NOT 36"x48" IT IS A REDUCED PRINT. REFER TO GRAPHIC SCALE.



EXTERIOR LIGHTING PLAN - GREEN ROOF LEVEL

SHEET TITLE:
P-0702

SHEET NUMBER:
 © 2018 RAFAEL VINOLY ARCHITECTS PCL



LT-E001



LT-E002A/ LT-E002B



LT-ECS1/LT-ECS2



LT-E004A/LT-E004C

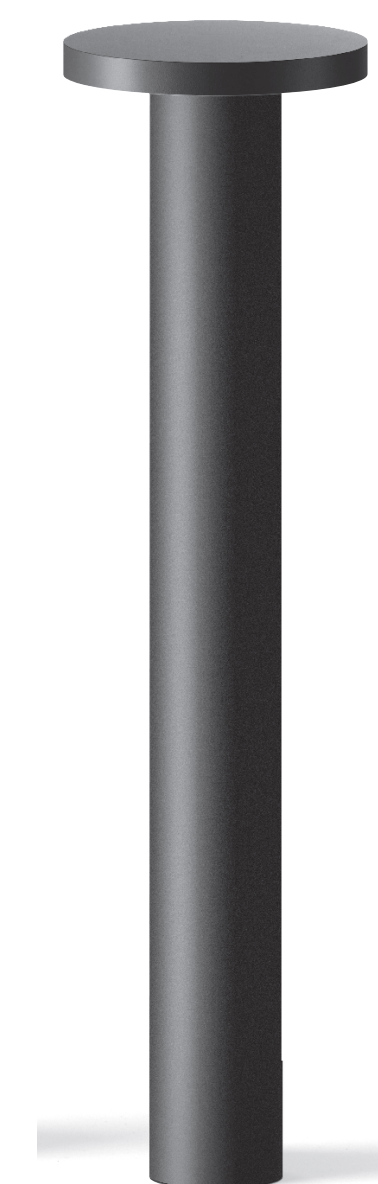


LT-E006

VALLCO LIGHTING FIXTURE SCHEDULE	
EXTERIOR	
LT-E001	PEDESTRIAN LED LIGHT POLE. NOMINAL 12FT HIGH WITH ONE HEAD.
LT-E002A	ROADWAY LED LIGHT POLE. NOMINAL 16FT TALL AND ONE HEAD.
LT-E002B	ROADWAY LED LIGHT POLE. NOMINAL 25FT TALL AND ONE HEAD.
LT-E003	NOT USED
LT-E003A	NOMINAL 8FT LONG LINEAR LED FIXTURE AT STREET 9 TUNNEL UNDER N. WOLFE ROAD.
LT-E004A	LED FLOODLIGHT MOUNTED TO TERRACE AT TOP OF BUILDING CORNERS
LT-E004C	LED FLOODLIGHT MOUNTED TO TERRACE AT TOP OF BUILDINGS
LT-E006	LED TREE UPLIGHTS
LT-E007	36 INCH TALL LED BOLLARD LIGHT
LT-E008	CATENARY LIGHT FIXTURE AT RETAIL STREET. 2000 LUMEN OUTPUT PER HEAD. MODIFIED FOR CATENARY HANGING.
LT-E009	30 INCH TALL LED BOLLARD LIGHT ALONG PRIMARY PATH ON ROOF.
LT-E014	EXTERIOR RATED WHITE LED GRAZER. HIGH OUTPUT 15W/FT AT ROOF EDGE.
LT-E015	EXTERIOR RATED WHITE LED GRAZER. LOW OUTPUT 8W/FT AT EAST PLAZA AND ROOF PLAZA APERTURE.
LT-E017	EXTERIOR RATED LED DOWNLIGHT MOUNTED TO BUILDING SOFFITS OF RETAIL STREETS.
LT-E024	CONTINUOUS LINEAR LED LIGHT FIXTURE DIRECTLY MOUNTED TO GARAGE ENTRY TUNNELS. 30X60 DISTRIBUTION. PROVIDE INTEGRAL LOUVERS AND GLARE CONTROL.
LT-E025	RECESSED LINEAR LED LIGHT AT RESIDENTIAL ENTRY CANOPY.
LT-E026	LED SPOTLIGHT MOUNTED UNDER PEDESTRIAN BRIDGE.
LT-E027	SUBMERSIBLE LINEAR LED AT AMENITY ROOF POOL.
LT-E028	LINEAR STEP LIGHT MOUNTED AT 18 INCH HIGH OF BRIDGE.
LT-ECS1	ROADWAY LED LIGHT POLE. NOMINAL 35FT HIGH WITH (1) HEAD. IES TYPE II RATED.
LT-ECS2	ROADWAY LED LIGHT POLE. NOMINAL 35FT HIGH WITH (2) HEADS. IES TYPE II RATED.



LT-E008



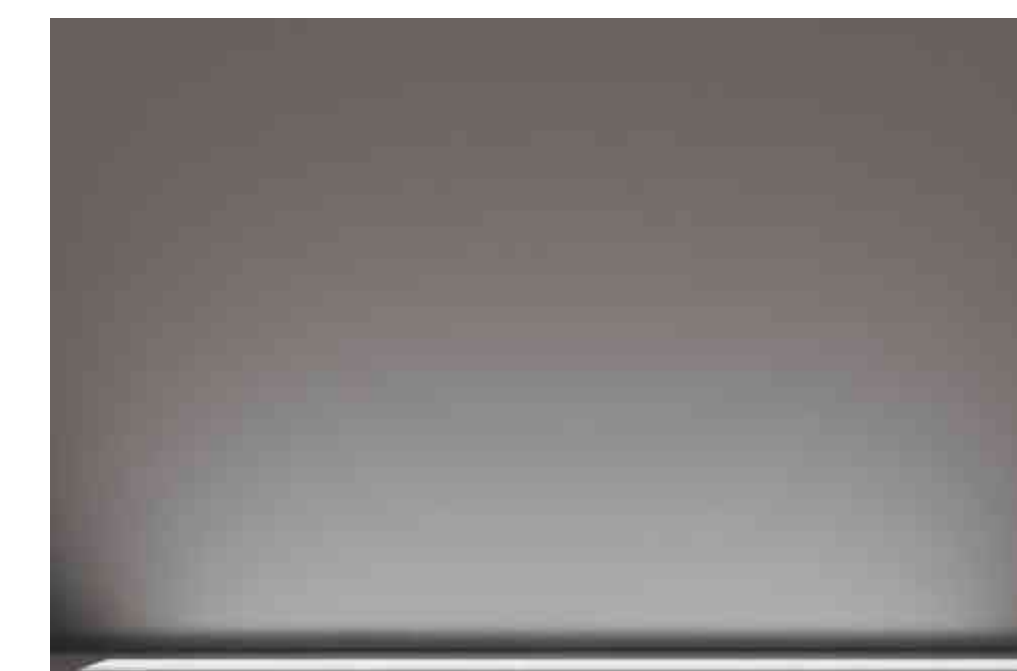
LT-E009



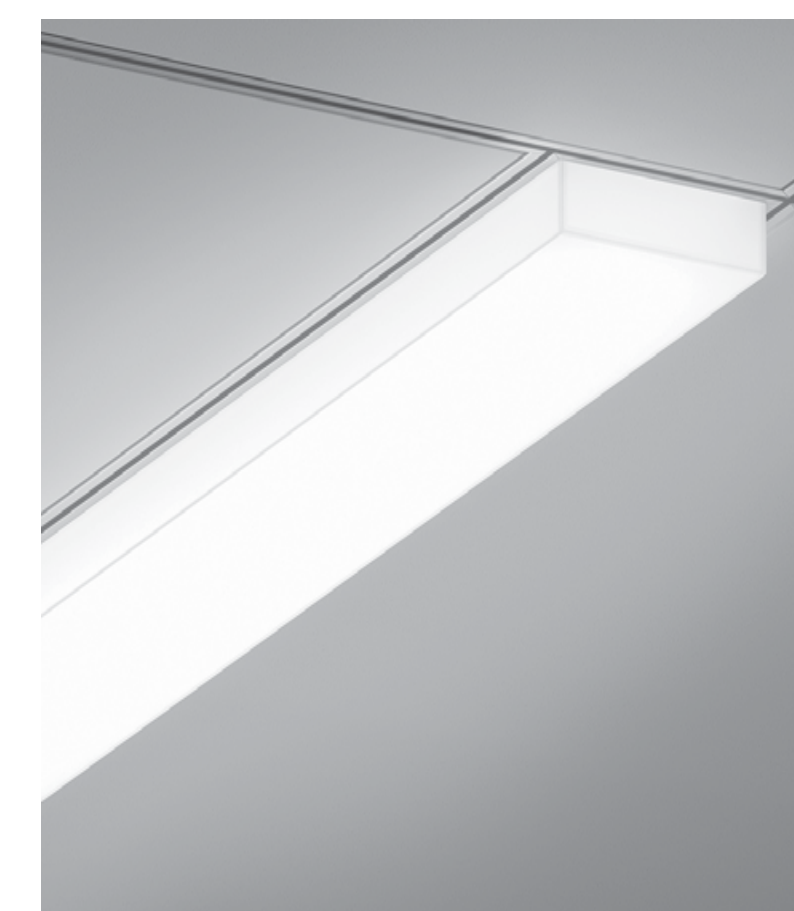
LT-E007



LT-E017/ LT-E026



LT-E024



LT-E025



LT-E027



LT-E028



LT-E014/ LT-E015

VALLCO
TOWN CENTER PROJECT

OWNER - VALLCO PROPERTY OWNER LLC
965 PAGE MILL ROAD, PALO ALTO, CA 94304
T. 650-944-1500

ARCHITECTURE - RAFAEL VINOLY ARCHITECTS
50 VANDAM STREET, NEW YORK, NY 10013
T. 212-924-0500

ARCHITECTURE - RAFAEL VINOLY ARCHITECTS
1033 N. WOLFE ROAD, CUPERTINO, CA 95014
T. 408-627-7000

LANDSCAPE ARCHITECTURE - OLIN PARTNERSHIP LTD.
150 S. INDEPENDENCE MALL, W. SUITE 1120, PHILADELPHIA, PA 19106
T. 215-440-0030

CIVIL - SANDS CIVIL ENGINEERS SURVEYORS PLANNERS, INC.
1700 S. WINCHESTER BLVD, SUITE 200, CAMPBELL, CA 95008
T. 408-636-0500

TRANSPORTATION ENGINEERING - ARUP NORTH AMERICA, LTD.
580 MISSION STREET, SUITE 700, SAN FRANCISCO, CA 94105
T. 415-567-8465

LIGHTING - ONE LUX STUDIO
158 WEST 29TH STREET, 10TH FLOOR, NEW YORK, NY 10001
T. 212-691-1950

SIGNAGE - EXIT
1617 JFK BLVD, SUITE 1665, PHILADELPHIA, PA 19103
T. 215-681-1950

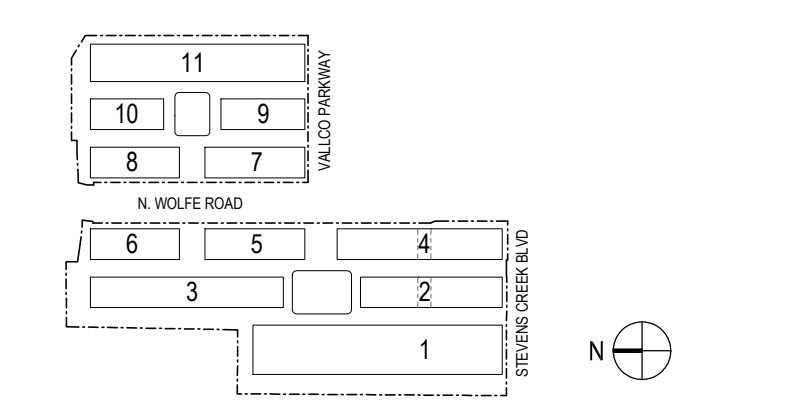
PARKING ENGINEERING - WATRY DESIGN, INC.
2099 GATEWAY PLACE, SUITE 550, SAN JOSE, CA 95110
T. 408-330-7000

NOT FOR CONSTRUCTION

DISCLAIMER
THE ARCHITECT / ENGINEER SHALL HAVE NO RESPONSIBILITY FOR ANY LIABILITY, LOSS, COST, DAMAGE OR EXPENSE ARISING FROM OR RELATING TO ANY USE OF THIS DOCUMENT FOR ANY PURPOSE OTHER THAN ITS INTENDED PURPOSE ON THIS PROJECT. THIS DOCUMENT IS TO BE CONSIDERED IN CONJUNCTION WITH ALL RELATED DOCUMENTATION. ANY DISCREPANCIES IDENTIFIED IN THIS DOCUMENT MUST BE REPORTED IMMEDIATELY TO THE ARCHITECT BEFORE PROCEEDING. CONTRACTORS MUST VERIFY ALL DIMENSIONS PRIOR TO PROCEEDING WITH ANY WORK. ONLY FIGURED DIMENSIONS ARE TO BE USED FOR VERIFICATION.

SB-35 DEVELOPMENT APPLICATION

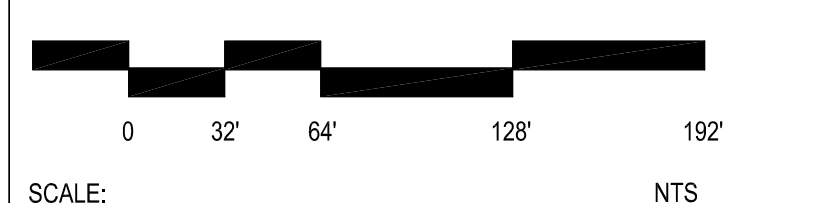
REV	DESCRIPTION	DATE
REV-0	SB-35 DEVELOPMENT APPLICATION	03/27/2018
REV-1	SB-35 APPLICATION REVISIONS	08/22/2018



KEY PLAN AND NORTH ARROW
ARCHITECTS PROJECT NUMBER: 708011

PROJECT PHASE: SB-35 DEVELOPMENT APPLICATION

IF THIS DRAWING IS NOT 36"X48" IT IS A REDUCED PRINT. REFER TO GRAPHIC SCALE.



SCALE: NTS
LIGHTING FIXTURE SCHEDULE

SHEET TITLE:

P-0703

SHEET NUMBER:
© 2018 RAFAEL VINOLY ARCHITECTS PCL

LEGEND	
EXTERIOR	
LT-E001	PEDESTRIAN LED LIGHT POLE, NOMINAL 12FT HIGH WITH ONE HEAD.
LT-E002A	ROADWAY LED LIGHT POLE, NOMINAL 16FT TALL AND ONE HEAD.
LT-E002B	ROADWAY LED LIGHT POLE, NOMINAL 25FT TALL AND ONE HEAD.
LT-E003	NOT USED
LT-E003A	NOMINAL 8FT LONG LINEAR LED FIXTURE AT STREET 9 TUNNEL UNDER N. WOLFE ROAD.
LT-E004A	LED FLOODLIGHT MOUNTED TO TERRACE AT TOP OF BUILDING CORNERS
LT-E004C	LED FLOODLIGHT MOUNTED TO TERRACE AT TOP OF BUILDINGS
LT-E006	LED TREE UPLIGHTS
LT-E007	36 INCH TALL LED BOLLARD LIGHT
LT-E008	CATENARY LIGHT FIXTURE AT RETAIL STREET, 2000 LUMEN OUTPUT PER HEAD, MODIFIED FOR CATENARY HANGING.
LT-E015	EXTERIOR RATED WHITE LED GRAZER, LOW OUTPUT SWIFT AT EAST PLAZA AND ROOF PLAZA APERTURE.
LT-E017	EXTERIOR RATED LED DOWNLIGHT MOUNTED TO BUILDING SOFFITS OF RETAIL STREETS.
LT-E024	CONTINUOUS LINEAR LED LIGHT FIXTURE DIRECTLY MOUNTED TO GARAGE ENTRY TUNNELS, 30X60 DISTRIBUTION, PROVIDE INTEGRAL LOUVERS AND GLARE CONTROL.
LT-E025	RECESSED LINEAR LED LIGHT AT RESIDENTIAL ENTRY CANOPY.
LT-E026	LED SPOTLIGHT MOUNTED UNDER PEDESTRIAN BRIDGE.
LT-EC51	ROADWAY LED LIGHT POLE, NOMINAL 35FT HIGH WITH (1) HEAD, IES TYPE II RATED.
LT-EC52	ROADWAY LED LIGHT POLE, NOMINAL 35FT HIGH WITH (2) HEADS, IES TYPE II RATED.

HORIZONTAL INITIAL ILLUMINANCE ISOLINES (Footcandle)

- 5
- 1
- 0.2
- 0

NOTE: LIGHT LOSS FACTOR = 1.0

OWNER - VALLCO PROPERTY OWNER LLC.
955 PAGE MILL ROAD, PALO ALTO, CA 94304
T. 650-344-1500

ARCHITECTURE - RAFAEL VINOLY ARCHITECTS
50 VANDAM STREET, NEW YORK, NY 10013
T. 212-694-0000

ARCHITECTURE - RAFAEL VINOLY ARCHITECTS
1033 N. WOLFE ROAD, CUPERTINO, CA 95014
T. 408-627-7000

LANDSCAPE ARCHITECTURE - OLIN PARTNERSHIP LTD.
150 S. INDEPENDENCE MALL W, SUITE 1123, PHILADELPHIA, PA 19106
T. 215-440-0000

CIVIL - SANDOS CIVIL ENGINEERS SURVEYORS PLANNERS, INC.
1700 S. WINCHESTER BLVD, SUITE 200, CAMPBELL, CA 95008
T. 408-258-0000

TRANSPORTATION ENGINEERING - ARUP NORTH AMERICA, LTD.
500 MISSION STREET, SUITE 700, SAN FRANCISCO, CA 94105
T. 415-957-9445

LIGHTING - ONE LUX STUDIO
158 WEST 29TH STREET, 10TH FLOOR, NEW YORK, NY 10001
T. 212-201-5790

SIGNAGE - EXIT
1617 8TH BLVD, SUITE 1665, PHILADELPHIA, PA 19103
T. 215-561-1950

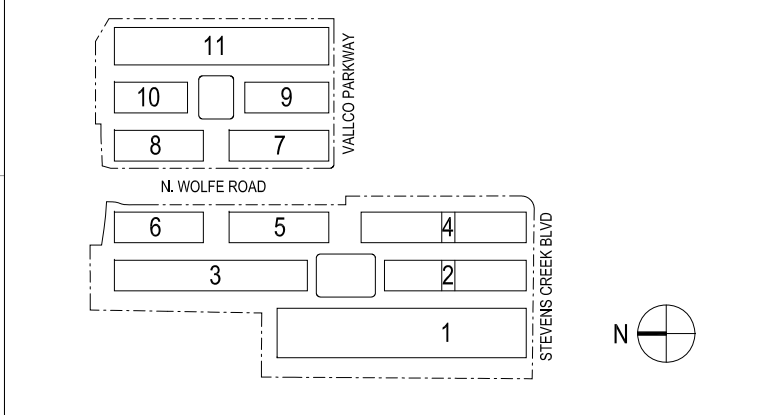
PARKING ENGINEERING - WATRY DESIGN, INC.
2009 GATEWAY PLACE, SUITE 500, SAN JOSE, CA 95110
T. 408-392-7000

NOT FOR CONSTRUCTION

DISCLAIMER
THE ARCHITECT/ENGINEER SHALL HAVE NO RESPONSIBILITY FOR ANY LIABILITY, LOSS, COST, DAMAGE OR EXPENSE ARISING FROM OR RELATING TO ANY USE OF THIS DOCUMENT FOR ANY PURPOSE OTHER THAN ITS INTENDED PURPOSE ON THIS PROJECT. THIS DOCUMENT IS TO BE CONSIDERED IN CONJUNCTION WITH ALL RELATED DOCUMENTATION. ANY DISCREPANCIES IDENTIFIED IN THIS DOCUMENT MUST BE REPORTED IMMEDIATELY TO THE ARCHITECT BEFORE PROCEEDING. CONTRACTORS MUST VERIFY ALL DIMENSIONS PRIOR TO PROCEEDING WITH ANY WORK. ONLY DIMENSIONS ARE TO BE USED FOR VERIFICATION.

SB-35 DEVELOPMENT APPLICATION

REV	DESCRIPTION	DATE
REV-0	SB-35 DEVELOPMENT APPLICATION	03/27/2018
REV-1	SB-35 APPLICATION REVISIONS	08/22/2018



KEY PLAN AND NORTH ARROW
ARCHITECTS PROJECT NUMBER: 708011

PROJECT PHASE: SB-35 DEVELOPMENT APPLICATION

IF THIS DRAWING IS NOT 30"x42" IT IS A REDUCED PRINT. REFER TO GRAPHIC SCALE.



SCALE: 1/8"=1'-0"

EXTERIOR PHOTOMETRIC PLAN - STREET LEVEL

SHEET TITLE:
P-0704

SHEET NUMBER:
© 2018 RAFAEL VINOLY ARCHITECTS PC

VALLCO TOWN CENTER PROJECT

OWNER - VALLCO PROPERTY OWNER LLC
 965 PAGE MILL ROAD, PALO ALTO, CA 94304
 T. 650-944-1500

ARCHITECTURE - RAFAEL VINOLY ARCHITECTS
 50 VANDAM STREET, NEW YORK, NY 10013
 T. 212-924-0500

ARCHITECTURE - RAFAEL VINOLY ARCHITECTS
 1033 N. WOLFE ROAD, GILBERT, CA 95024
 T. 408-827-7090

LANDSCAPE ARCHITECTURE - OLIN PARTNERSHIP LTD.
 100 S. INDEPENDENCE MALL, W. SUITE 1103, PHILADELPHIA, PA 19106
 T. 215-440-0000

CIVIL - SANDIS CIVIL ENGINEERS SURVEYORS PLANNERS, INC.
 1700 S. WINCHESTER BLVD., SUITE 200, CAMPBELL, CA 95008
 T. 408-436-0900

TRANSPORTATION ENGINEERING - ARUP NORTH AMERICA, LTD.
 560 MISSION STREET, SUITE 700, SAN FRANCISCO, CA 94105
 T. 415-667-9445

LIGHTING - ONE LUX STUDIO
 158 WEST 29TH STREET, 10TH FLOOR, NEW YORK, NY 10001
 T. 212-205-6750

SIGNAGE - EXIT
 1617 JPK BLVD, SUITE 1665, PHILADELPHIA, PA 19103
 T. 215-681-1950

PARKING ENGINEERING - WATRY DESIGN, INC.
 2099 GATEWAY PLACE, SUITE 550, SAN JOSE, CA 95110
 T. 408-330-7900

LEGEND	
LT-E001	PEDESTRIAN LED LIGHT POLE, NOMINAL 12 FEET HIGH WITH ONE HEAD.
LT-E009	30 INCH TALL LED BOLLARD LIGHT ALONG PRIMARY PATH ON ROOF.
LT-E014	EXTERIOR RATED WHITE LED GRAZER, HIGH OUTPUT 15W/FT AT ROOF EDGE.
LT-E015	EXTERIOR RATED WHITE LED GRAZER, LOW OUTPUT 8W/FT AT ROOF PLAZA APERTURE. (HEDGE LIGHTING)
LT-E026	UNDERWATER LINEAR LED LIGHTING AT POOL.

HORIZONTAL INITIAL ILLUMINANCE ISOLINES (Footcandle)	
	5
	1
	0.2
	0

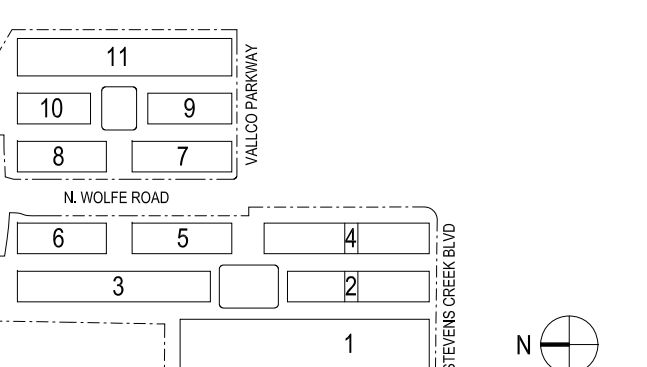
NOTE: LIGHT LOSS FACTOR = 1.0

NOT FOR CONSTRUCTION

DISCLAIMER
 THE ARCHITECT/ENGINEER SHALL HAVE NO RESPONSIBILITY FOR ANY LIABILITY, LOSS, COST, DAMAGE OR EXPENSE ARISING FROM OR RELATING TO ANY USE OF THIS DOCUMENT FOR ANY PURPOSE OTHER THAN ITS INTENDED PURPOSE ON THIS PROJECT. THIS DOCUMENT IS TO BE CONSIDERED IN CONJUNCTION WITH ALL RELATED DOCUMENTATION. ANY DISCREPANCIES IDENTIFIED IN THIS DOCUMENT MUST BE REPORTED IMMEDIATELY TO THE ARCHITECT BEFORE PROCEEDING. CONTRACTORS MUST VERIFY ALL DIMENSIONS PRIOR TO PROCEEDING WITH ANY WORK. ONLY FIGURED DIMENSIONS ARE TO BE USED FOR VERIFICATION.

SB-35 DEVELOPMENT APPLICATION

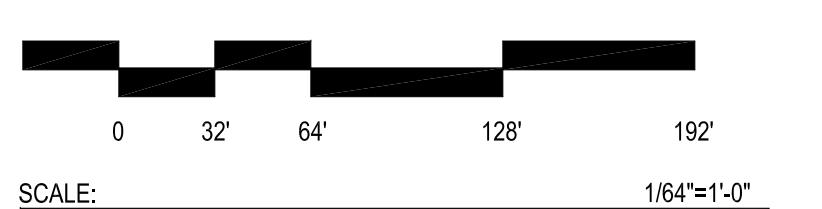
REV	DESCRIPTION	DATE
REV 0	SB-35 APPLICATION REVISIONS	08/22/2018



KEY PLAN AND NORTH ARROW
 ARCHITECTS PROJECT NUMBER 708011

PROJECT PHASE SB-35 DEVELOPMENT APPLICATION

IF THIS DRAWING IS NOT 36"x48" IT IS A REDUCED PRINT. REFER TO GRAPHIC SCALE.



EXTERIOR PHOTOMETRIC PLAN - GREEN ROOF LEVEL

SHEET TITLE

P-0705

SHEET NUMBER