

# VALLCO TOWN CENTER

**LEGEND**

- PROPERTY LINE BEFORE DEDICATION
- PROPERTY LINE AFTER DEDICATION
- ▭ STRUCTURE
- EXISTING STANDARD TREE 706
- ▲ EXISTING SPECIMEN TREE 6
- EXISTING DEVELOPMENT TREE 93
- EXISTING STREET TREE 188
- EXISTING HERITAGE TREE 0
- TOTAL TREE 996

FOR DETAILS OF EXISTING TREE CONDITIONS, SEE ARBORIST REPORT, DATED JULY 31, 2018, PREPARED BY WALTER LEVISON, CONSULTING ARBORIST (W.L.C.A.)

OWNER - VALLCO PROPERTY OWNER LLC  
965 PAGE MILL ROAD, PALO ALTO, CA 94304  
T. 650-344-1500

ARCHITECTURE - RAFAEL VINOLY ARCHITECTS  
50 WANDAM STREET, NEW YORK, NY 10013  
T. 212-924-6500

ARCHITECTURE - RAFAEL VINOLY ARCHITECTS  
1933 N. WOLFE ROAD, CUPERTINO, CA 95014  
T. 408-627-7900

LANDSCAPE ARCHITECTURE - OLIN PARTNERSHIP LTD.  
192 S. INDEPENDENCE MALL, W. SUITE 1123, PHILADELPHIA, PA 19106  
T. 215-440-0000

CIVIL - SANDIS CIVIL ENGINEERS SURVEYORS PLANNERS, INC.  
1700 S. WINCHESTER BLVD, SUITE 200, CAMPBELL, CA 95008  
T. 408-636-0500

TRANSPORTATION ENGINEERING - ARUP NORTH AMERICA, LTD.  
580 MISSION STREET, SUITE 700, SAN FRANCISCO, CA 94105  
T. 415-597-8445

LIGHTING - ONE LUX STUDIO  
158 WEST 29TH STREET, 10TH FLOOR, NEW YORK, NY 10001  
T. 212-250-5750

SIGNAGE - EXIT  
1817 JFK BLVD, SUITE 1665, PHILADELPHIA, PA 19103  
T. 215-581-1550

PARKING ENGINEERING - WATRY DESIGN, INC.  
2096 GATEWAY PLACE, SUITE 550, SAN JOSE, CA 95110  
T. 408-260-7568

WASTE MANAGEMENT - CH2M HILL INTERNATIONAL  
535 NORTH BRAND BLVD, STE 710 GLENDALE, CA 92103  
T. 626-441-7700

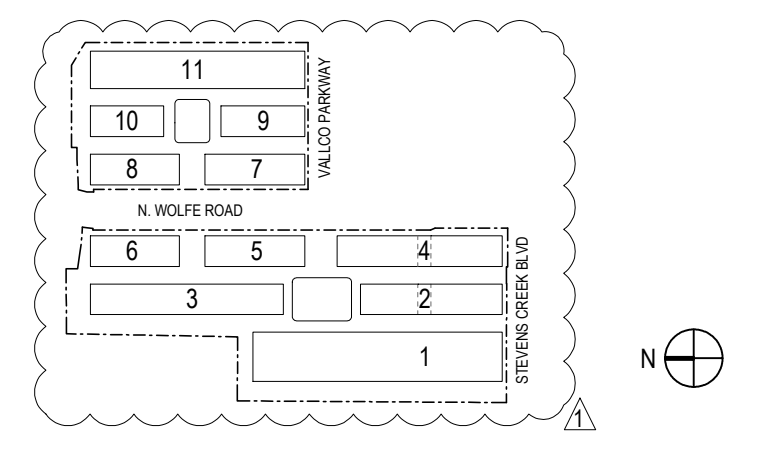


## NOT FOR CONSTRUCTION

DISCLAIMER  
THE ARCHITECT/ENGINEER SHALL HAVE NO RESPONSIBILITY FOR ANY LIABILITY, LOSS, COST, DAMAGE OR EXPENSE ARISING FROM OR RELATING TO ANY USE OF THIS DOCUMENT FOR ANY PURPOSE OTHER THAN ITS INTENDED PURPOSE ON THIS PROJECT. THIS DOCUMENT IS TO BE CONSIDERED IN CONJUNCTION WITH ALL RELATED DOCUMENTATION. ANY DISCREPANCIES IDENTIFIED IN THIS DOCUMENT MUST BE REPORTED IMMEDIATELY TO THE ARCHITECT BEFORE PROCEEDING. CONTRACTORS MUST VERIFY ALL DIMENSIONS PRIOR TO PROCEEDING WITH ANY WORK. ONLY FIGURED DIMENSIONS ARE TO BE USED FOR VERIFICATION.

## SB-35 DEVELOPMENT APPLICATION

REV	DESCRIPTION	DATE
REV-0	SB-35 DEVELOPMENT APPLICATION	03/27/2018
REV-1	SB-35 DEVELOPMENT APPLICATION	07/31/2018



KEY PLAN AND NORTH ARROW

ARCHITECTS PROJECT NUMBER 708011

PROJECT PHASE SB-35 DEVELOPMENT APPLICATION

IF THIS DRAWING IS NOT 36"x48" IT IS A REDUCED PRINT. REFER TO GRAPHIC SCALE.



SCALE 1/8"=1'-0"

## EXISTING TREE CONDITIONS

SHEET TITLE

# P-0601

SHEET NUMBER

# VALLCO TOWN CENTER

OWNER - VALLCO PROPERTY OWNER LLC  
 985 PAGE MILL ROAD, PALO ALTO, CA 94304  
 T. 650.344.1500

ARCHITECTURE - RAFAEL VINOLY ARCHITECTS  
 50 VANDAN STREET, NEW YORK, NY 10013  
 T. 212.924.5900

ARCHITECTURE - RAFAEL VINOLY ARCHITECTS  
 1033 N. WOLFE ROAD, CUPERTINO, CA 95014  
 T. 408.627.7090

LANDSCAPE ARCHITECTURE - OLIN PARTNERSHIP LTD.  
 150 S. INDEPENDENCE MALL VI, SUITE 1123, PHILADELPHIA, PA 19106  
 T. 215.440.9300

CIVIL - SANDIS CIVIL ENGINEERS SURVEYORS PLANNERS, INC.  
 1700 S. WINCHESTER BLVD, SUITE 200, CAMPBELL, CA 95008  
 T. 408.636.9300

TRANSPORTATION ENGINEERING - ARUP NORTH AMERICA, LTD.  
 560 MISSION STREET, SUITE 700, SAN FRANCISCO, CA 94105  
 T. 415.527.5445

LIGHTING - ONE LUX STUDIO  
 158 WEST 29TH STREET, 10TH FLOOR, NEW YORK, NY 10001  
 T. 212.201.5790

SIGNAGE - EXIT  
 1617 JFK BLVD, SUITE 1665, PHILADELPHIA, PA 19103  
 T. 215.681.1990

PARKING ENGINEERING - WATRY DESIGN, INC.  
 2099 GATEWAY PLACE, SUITE 550, SAN JOSE, CA 95110  
 T. 408.392.7900

WASTE MANAGEMENT - CUNLITTLE INTERNATIONAL  
 535 NORTH BRAND BLVD, STE 170 GLENDALE, CA 92103  
 T. 626.441.7700

**LEGEND**

- PROPERTY LINE
- PROPERTY LINE AFTER DEDICATION
- ▭ STRUCTURE
- ▭ STRUCTURE ABOVE
- ▨ TREE PROTECTION AREA
- CHAINLINK TREE PROTECTION FENCE

● TAG#	EXISTING STANDARD TREE TO REMAIN	334
⊗ TAG#	EXISTING STANDARD TREE TO BE REMOVED	374
○ TAG#	EXISTING SPECIMEN TREE TO BE TRANSPLANTED	6
⊗ TAG#	DEVELOPMENT TREE TO BE REMOVED	93
● TAG#	EXISTING STREET TREE TO REMAIN	124
⊗ TAG#	EXISTING STREET TREE TO BE REMOVED	64
<b>TOTAL TREE</b>		<b>995</b>

FOR DETAILS OF EXISTING TREE CONDITIONS, SEE ARBORIST REPORT, DATED JULY 31, 2018, PREPARED BY WALTER LEVISON, CONSULTING ARBORIST (W/LCA).

TREE PROTECTION ARE PROVIDED BASED ON ARBORIST TREE PROTECTION RECOMMENDATIONS, IN CHAPTER 11.0.

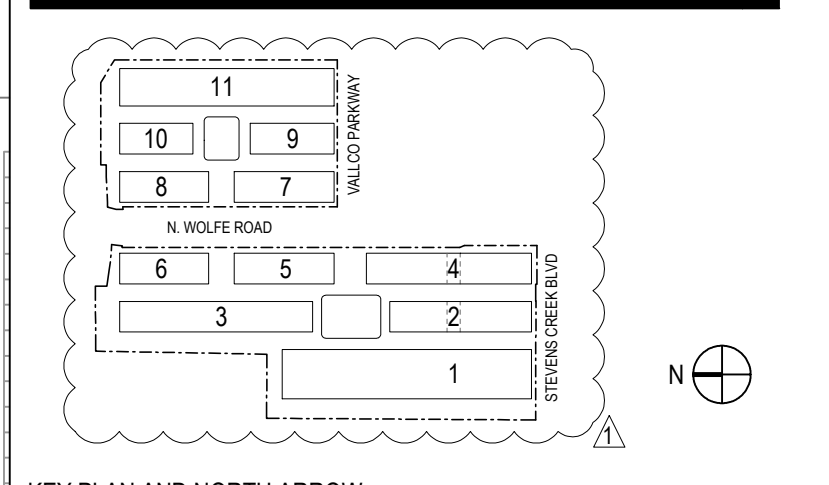


## NOT FOR CONSTRUCTION

**DISCLAIMER**  
 THE ARCHITECT / ENGINEER SHALL HAVE NO RESPONSIBILITY FOR ANY LIABILITY, LOSS, COST, DAMAGE OR EXPENSE ARISING FROM OR RELATING TO ANY USE OF THIS DOCUMENT FOR ANY PURPOSE OTHER THAN ITS INTENDED PURPOSE ON THIS PROJECT. THIS DOCUMENT IS TO BE CONSIDERED IN CONJUNCTION WITH ALL RELATED DOCUMENTATION. ANY DISCREPANCIES IDENTIFIED IN THIS DOCUMENT MUST BE REPORTED IMMEDIATELY TO THE ARCHITECT BEFORE PROCEEDING. CONTRACTORS MUST VERIFY ALL DIMENSIONS PRIOR TO PROCEEDING WITH ANY WORK. ONLY FIGURED DIMENSIONS ARE TO BE USED FOR VERIFICATION.

## SB-35 DEVELOPMENT APPLICATION

REV.	DESCRIPTION	DATE
REV. 0	SB-35 DEVELOPMENT APPLICATION	07/31/2018



KEY PLAN AND NORTH ARROW

ARCHITECTS PROJECT NUMBER: 708011

PROJECT PHASE: SB-35 DEVELOPMENT APPLICATION

IF THIS DRAWING IS NOT 36"X48" IT IS A REDUCED PRINT. REFER TO GRAPHIC SCALE.



## TREE PROTECTION PLAN

SHEET TITLE: P-0602A

# VALLCO TOWN CENTER

OWNER - VALLCO PROPERTY OWNER LLC  
 985 PAGE MILL ROAD, PALO ALTO, CA 94304  
 T. 650-344-1500

ARCHITECTURE - RAFAEL VINOLY ARCHITECTS  
 50 VANDAN STREET, NEW YORK, NY 10013  
 T. 212-924-5900

ARCHITECTURE - RAFAEL VINOLY ARCHITECTS  
 1033 N. WOLFE ROAD, CUPERTINO, CA 95014  
 T. 408-627-7090

LANDSCAPE ARCHITECTURE - OLIN PARTNERSHIP LTD.  
 150 S. INDEPENDENCE MALL W. SUITE 1123, PHILADELPHIA, PA 19106  
 T. 215-440-9300

CIVIL - SANDIS CIVIL ENGINEERS SURVEYORS PLANNERS, INC.  
 1700 S. WINCHESTER BLVD, SUITE 200, CAMPBELL, CA 95008  
 T. 408-382-9300

TRANSPORTATION ENGINEERING - ARUP NORTH AMERICA, LTD.  
 560 MISSION STREET, SUITE 700, SAN FRANCISCO, CA 94105  
 T. 415-527-5452

LIGHTING - ONE LUX STUDIO  
 158 WEST 29TH STREET, 10TH FLOOR, NEW YORK, NY 10001  
 T. 212-201-5790

SIGNAGE - EXIT  
 1617 JFK BLVD, SUITE 1665, PHILADELPHIA, PA 19103  
 T. 215-981-1990

TRAVEL ENGINEERING - WATRY DESIGN, INC.  
 2099 GATEWAY PLACE, SUITE 550, SAN JOSE, CA 95110  
 T. 408-392-7900

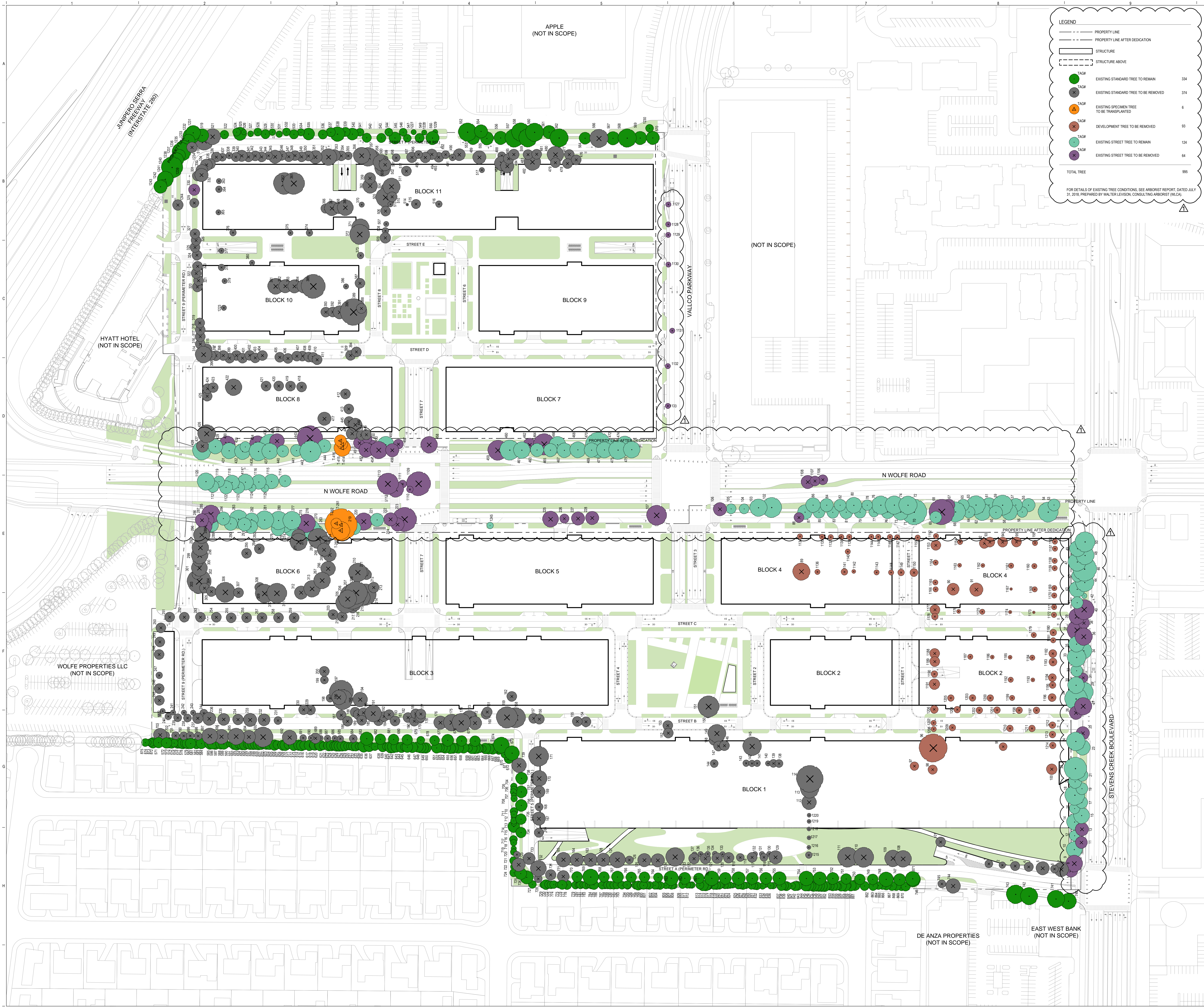
WASTE MANAGEMENT - CONSULTING INTERNATIONAL  
 535 NORTH BRAND BLVD, STE 710 GLENDALE, CA 92103  
 T. 656-441-7700

**LEGEND**

- PROPERTY LINE
- - - PROPERTY LINE AFTER DEDICATION
- ▭ STRUCTURE
- STRUCTURE ABOVE

● TAG#	EXISTING STANDARD TREE TO REMAIN	334
● TAG#	EXISTING STANDARD TREE TO BE REMOVED	374
● TAG#	EXISTING SPECIMEN TREE TO BE TRANSPLANTED	6
● TAG#	DEVELOPMENT TREE TO BE REMOVED	93
● TAG#	EXISTING STREET TREE TO REMAIN	124
● TAG#	EXISTING STREET TREE TO BE REMOVED	64
<b>TOTAL TREE</b>		<b>995</b>

FOR DETAILS OF EXISTING TREE CONDITIONS, SEE ARBORIST REPORT, DATED JULY 31, 2018, PREPARED BY WALTER LEVISON, CONSULTING ARBORIST/ULCA

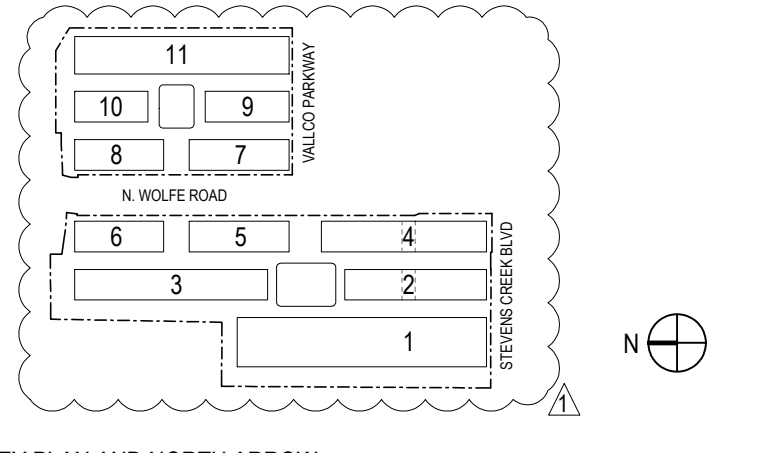


## NOT FOR CONSTRUCTION

DISCLAIMER  
 THE ARCHITECT / ENGINEER SHALL HAVE NO RESPONSIBILITY FOR ANY LIABILITY, LOSS, COST, DAMAGE OR EXPENSE ARISING FROM OR RELATING TO ANY USE OF THIS DOCUMENT FOR ANY PURPOSE OTHER THAN ITS INTENDED PURPOSE ON THIS PROJECT. THIS DOCUMENT IS TO BE CONSIDERED IN CONJUNCTION WITH ALL RELATED DOCUMENTATION. ANY DISCREPANCIES IDENTIFIED IN THIS DOCUMENT MUST BE REPORTED IMMEDIATELY TO THE ARCHITECT BEFORE PROCEEDING. CONTRACTORS MUST VERIFY ALL DIMENSIONS PRIOR TO PROCEEDING WITH ANY WORK. ONLY FIGURED DIMENSIONS ARE TO BE USED FOR VERIFICATION.

## SB-35 DEVELOPMENT APPLICATION

REV.	DESCRIPTION	DATE
REV-0	SB-35 DEVELOPMENT APPLICATION	03/27/2018
REV-1	SB-35 DEVELOPMENT APPLICATION	07/31/2018



KEY PLAN AND NORTH ARROW

ARCHITECTS PROJECT NUMBER: 708011

PROJECT PHASE: SB-35 DEVELOPMENT APPLICATION

IF THIS DRAWING IS NOT 3/4" = 1' IT IS A REDUCED PRINT; REFER TO GRAPHIC SCALE



## TREE DISPOSITION PLAN

SHEET TITLE: P-0602B



**LEGEND**

- PROPERTY LINE
- PROPERTY LINE AFTER DEDICATION
- ▭ STRUCTURE
- ▭ STRUCTURE ABOVE

● TAG#	EXISTING STANDARD TREE TO REMAIN	334
● TAG#	EXISTING SPECIMEN TREE TO BE TRANSPLANTED	6
● TAG#	EXISTING STREET TREE TO REMAIN	124
● TAG#	PROPOSED STREET TREE	107
● TAG#	PROPOSED STANDARD TREE	504
● TAG#	PROPOSED FLOWERING TREE	53
	<b>TOTAL TREE</b>	<b>1128</b>

**VALLCO TOWN CENTER**

OWNER - VALLCO PROPERTY OWNER LLC  
 565 PACE HILL ROAD, PALO ALTO, CA 94304  
 T. 650.344.1500

ARCHITECTURE - RAFAEL VINOLY ARCHITECTS  
 50 VANDER STREET, NEW YORK, NY 10013  
 T. 212.924.0500

ARCHITECTURE - RAFAEL VINOLY ARCHITECTS  
 1033 N. WOLFE ROAD, CUPERTINO, CA 95014  
 T. 408.827.7000

LANDSCAPE ARCHITECTURE - OLIN PARTNERSHIP LTD.  
 150 S. INDEPENDENCE MALL W. SUITE 1123, PHILADELPHIA, PA 19106  
 T. 215.440.0000

CIVIL - SANDIS CIVIL ENGINEERS SURVEYORS PLANNERS, INC.  
 1700 S. WINCHESTER BLVD. SUITE 200, CAMPBELL, CA 95008  
 T. 408.638.0000

TRANSPORTATION ENGINEERING - ARUP NORTH AMERICA, LTD.  
 500 MISSION STREET, SUITE 700, SAN FRANCISCO, CA 94105  
 T. 415.557.5445

LIGHTING - ONE LUX STUDIO  
 158 WEST 20TH STREET, 10TH FLOOR, NEW YORK, NY 10001  
 T. 212.201.5790

SCENIC EXIST  
 1617 JFK BLVD, SUITE 1605, PHILADELPHIA, PA 19103  
 T. 215.561.1950

PARKING ENGINEERING - WATRY DESIGN, INC.  
 2099 GATEWAY PLACE, SUITE 550, SAN JOSE, CA 95110  
 T. 408.392.7900

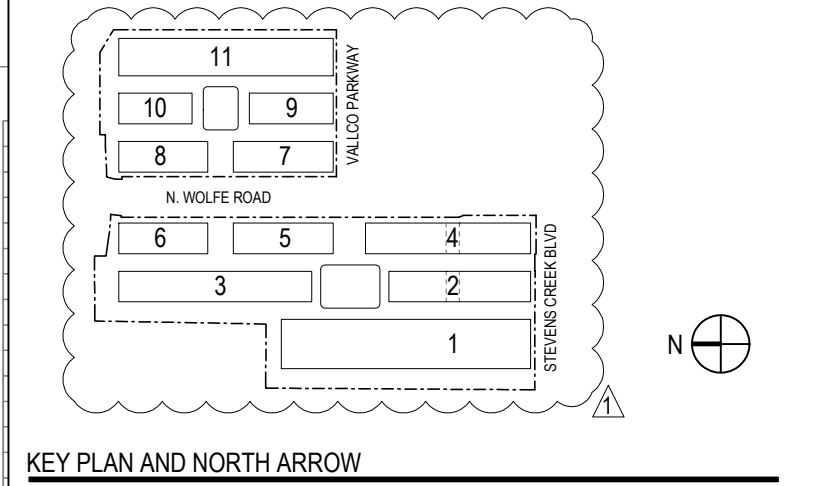
WASTE MANAGEMENT - CONLITTLE INTERNATIONAL  
 635 NORTH BRAND BLVD. STE 110 GLENDALE, CA 91203  
 T. 626.441.7700

**NOT FOR CONSTRUCTION**

DISCLAIMER  
 THE ARCHITECT / ENGINEER SHALL HAVE NO RESPONSIBILITY FOR ANY LIABILITY, LOSS, COST, DAMAGE OR EXPENSE ARISING FROM OR RELATING TO ANY USE OF THIS DOCUMENT FOR ANY PURPOSE OTHER THAN ITS INTENDED PURPOSE ON THIS PROJECT. THIS DOCUMENT IS TO BE CONSIDERED IN CONJUNCTION WITH ALL RELATED DOCUMENTATION. ANY DISCREPANCIES IDENTIFIED IN THIS DOCUMENT MUST BE REPORTED IMMEDIATELY TO THE ARCHITECT BEFORE PROCEEDING. CONTRACTORS MUST VERIFY ALL DIMENSIONS PRIOR TO PROCEEDING WITH ANY WORK. ONLY FIGURED DIMENSIONS ARE TO BE USED FOR VERIFICATION.

**SB-35 DEVELOPMENT APPLICATION**

REV.	DESCRIPTION	DATE
REV-0	SB-35 DEVELOPMENT APPLICATION	03/27/2018
REV-1	SB-35 DEVELOPMENT APPLICATION	07/31/2018



KEY PLAN AND NORTH ARROW

ARCHITECTS PROJECT NUMBER: 708011

PROJECT PHASE: SB-35 DEVELOPMENT APPLICATION

IF THIS DRAWING IS NOT 36"X48" IT IS A REDUCED PRINT. REFER TO GRAPHIC SCALE.

SCALE: 1/8" = 1'-0"

**LANDSCAPE PLAN STREET LEVEL**

SHEET TITLE:

**P-0603**

SHEET NUMBER:

© 2018 RAFAEL VINOLY ARCHITECTS PC

# VALLCO TOWN CENTER

OWNER - VALLCO PROPERTY OWNER LLC  
 565 PRICE MILL ROAD, PALO ALTO, CA 94304  
 T. 650.344.1500

ARCHITECTURE - RAFAEL VINOLY ARCHITECTS  
 50 VANANDA STREET, NEW YORK, NY 10013  
 T. 212.924.0560

ARCHITECTURE - RAFAEL VINOLY ARCHITECTS  
 1033 N. WOLFE ROAD, CUPERTINO, CA 95014  
 T. 408.827.7000

LANDSCAPE ARCHITECTURE - OLIN PARTNERSHIP LTD.  
 150 S. INDEPENDENCE MALL, W. SUITE 1123, PHILADELPHIA, PA 19106  
 T. 215.440.0000

CIVIL - SANDIS CIVIL ENGINEERS SURVEYORS PLANNERS, INC.  
 1700 S. WINCHESTER BLVD, SUITE 200, CAMPBELL, CA 95008  
 T. 408.336.0500

TRANSPORTATION ENGINEERING - ARUP NORTH AMERICA, LTD.  
 500 MISSION STREET, SUITE 700, SAN FRANCISCO, CA 94105  
 T. 415.557.5445

LIGHTING - ONE LUX STUDIO  
 158 WEST 20TH STREET, 10TH FLOOR, NEW YORK, NY 10001  
 T. 212.201.5790

SCENIC - EXCT  
 1617 JFK BLVD, SUITE 1065, PHILADELPHIA, PA 19103  
 T. 215.561.1950

PARKING ENGINEERING - WATRY DESIGN, INC.  
 2099 GATEWAY PLACE, SUITE 550, SAN JOSE, CA 95110  
 T. 408.392.7900

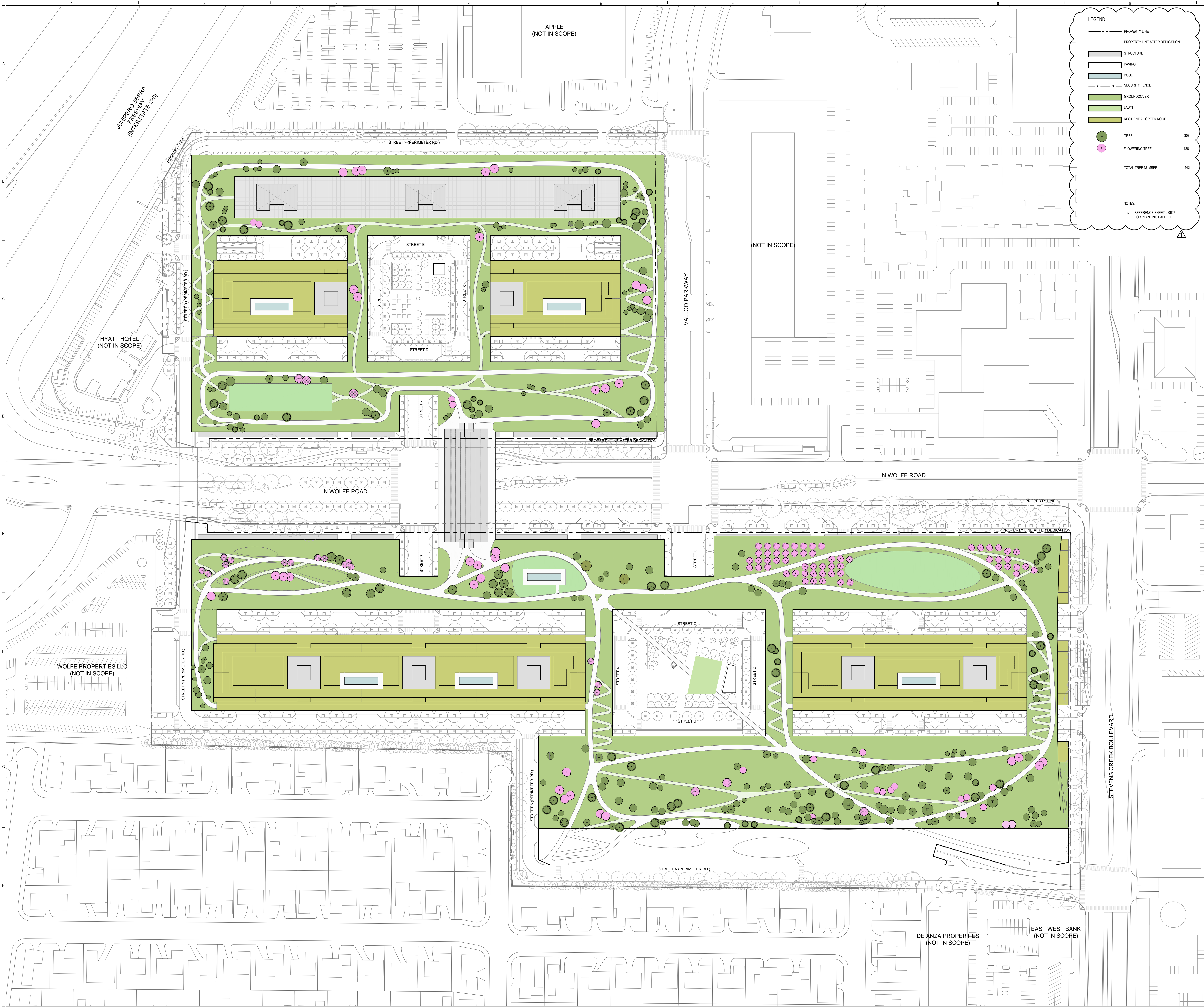
WASTE MANAGEMENT - CONSULTING INTERNATIONAL  
 535 NORTH BRAND BLVD, STE 110 GLENDALE, CA 92033  
 T. 626.441.7700

**LEGEND**

- PROPERTY LINE
- - - PROPERTY LINE AFTER DEDICATION
- ▭ STRUCTURE
- ▭ PAVING
- ▭ POOL
- ▭ GROUND COVER
- ▭ LAWN
- ▭ RESIDENTIAL GREEN ROOF
- TREE
- FLOWERING TREE

TOTAL TREE NUMBER 443

NOTES:  
 1. REFERENCE SHEET L-0607 FOR PLANTING PALETTE

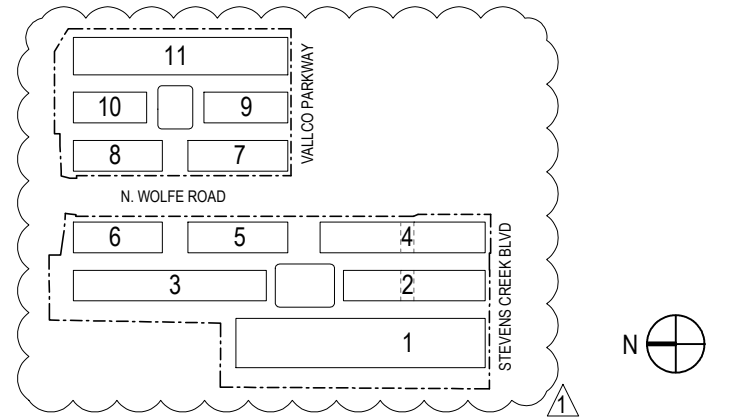


## NOT FOR CONSTRUCTION

**DISCLAIMER**  
 THE ARCHITECT / ENGINEER SHALL HAVE NO RESPONSIBILITY FOR ANY LIABILITY, LOSS, COST, DAMAGE OR EXPENSE ARISING FROM OR RELATING TO ANY USE OF THIS DOCUMENT FOR ANY PURPOSE OTHER THAN ITS INTENDED PURPOSE ON THIS PROJECT. THIS DOCUMENT IS TO BE CONSIDERED IN CONJUNCTION WITH ALL RELATED DOCUMENTATION. ANY DISCREPANCIES IDENTIFIED IN THIS DOCUMENT MUST BE REPORTED IMMEDIATELY TO THE ARCHITECT BEFORE PROCEEDING. CONTRACTORS MUST VERIFY ALL DIMENSIONS PRIOR TO PROCEEDING WITH ANY WORK. ONLY FIGURED DIMENSIONS ARE TO BE USED FOR VERIFICATION.

## SB-35 DEVELOPMENT APPLICATION

REV.	DESCRIPTION	DATE
REV-0	SB-35 DEVELOPMENT APPLICATION	03/27/2018
REV-1	SB-35 DEVELOPMENT APPLICATION	07/31/2018



KEY PLAN AND NORTH ARROW  
 ARCHITECTS PROJECT NUMBER 708011

PROJECT PHASE SB-35 DEVELOPMENT APPLICATION

IF THIS DRAWING IS NOT 36"X48" IT IS A REDUCED PRINT; REFER TO GRAPHIC SCALE

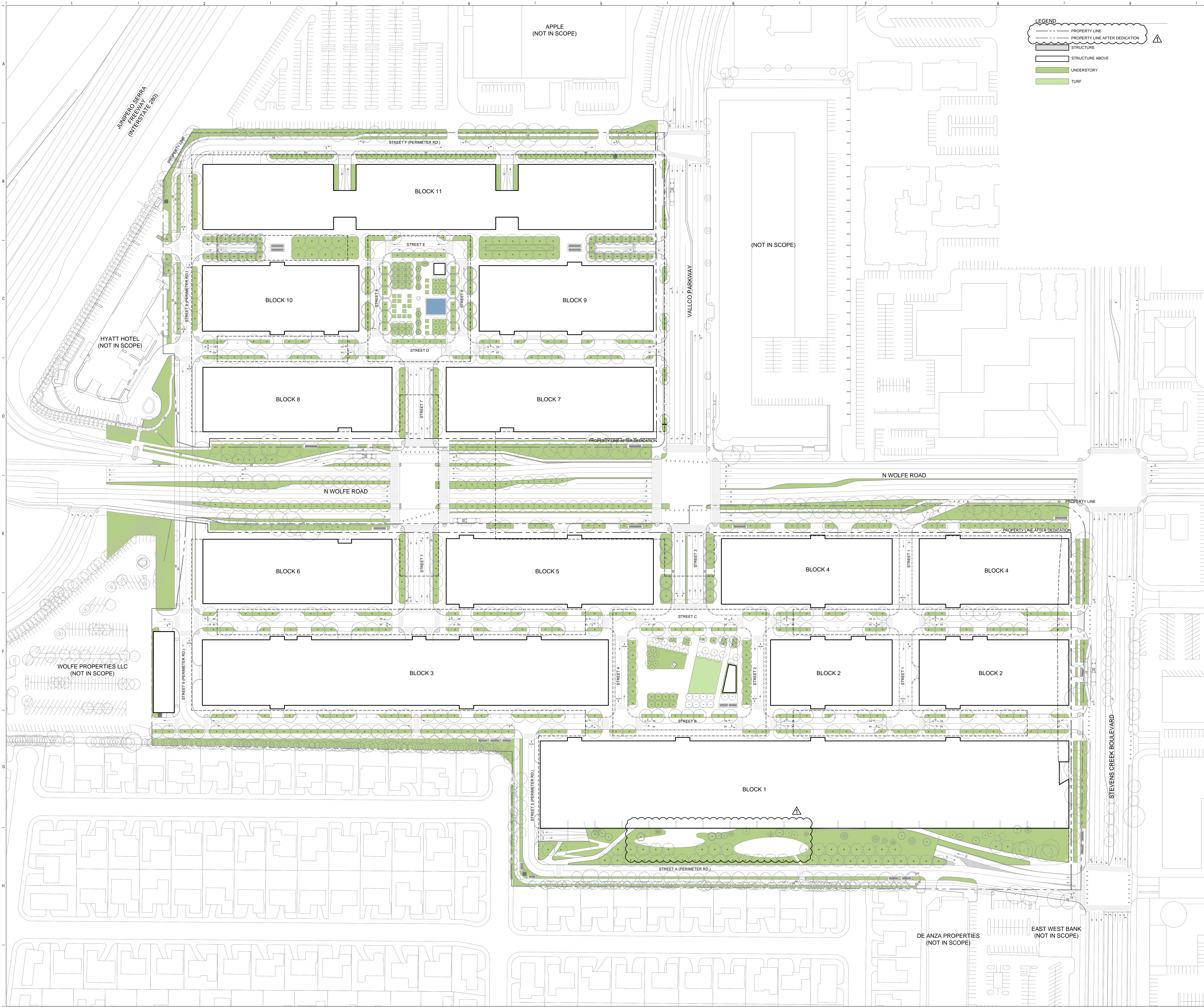


## LANDSCAPE SITE PLAN GREEN ROOF LEVEL

SHEET TITLE

# P-0604

SHEET NUMBER



**LEGEND**

- PROPERTY LINE
- PROPERTY LINE AFTER DEDICATION
- STRUCTURE
- STRUCTURE ABOVE
- UNDERSTORY
- TURF

# VALLCO TOWN CENTER

OWNER - VALLCO PROPERTY OWNER LLC  
 955 PACE HILL ROAD, PALO ALTO, CA 94304  
 T. 650.344.1500

ARCHITECTURE - RAFAEL VINOLY ARCHITECTS  
 50 VAN DAM STREET, NEW YORK, NY 10013  
 T. 212.904.0060

ARCHITECTURE - RAFAEL VINOLY ARCHITECTS  
 1033 N. WOLFE ROAD, CUPERTINO, CA 95014  
 T. 408.627.7000

LANDSCAPE ARCHITECTURE - OLIN PARTNERSHIP LTD.  
 150 S. INDEPENDENCE MALL, W. SUITE 1123, PHILADELPHIA, PA 19106  
 T. 215.440.0000

CIVIL - SANDIS CIVIL ENGINEERS SURVEYORS PLANNERS, INC.  
 1700 S. WINCHESTER BLVD, SUITE 200, CAMPBELL, CA 95008  
 T. 408.336.0000

TRANSPORTATION ENGINEERING - ARUP NORTH AMERICA, LTD.  
 550 MISSION STREET, SUITE 700, SAN FRANCISCO, CA 94105  
 T. 415.557.5445

LIGHTING - ONE LUX STUDIO  
 158 WEST 20TH STREET, 10TH FLOOR, NEW YORK, NY 10011  
 T. 212.201.5790

SCAFFOLD ERECT  
 1617 JFK BLVD, SUITE 1605, PHILADELPHIA, PA 19103  
 T. 215.561.1950

PARKING ENGINEERING - WATRY DESIGN, INC.  
 2099 GATEWAY PLACE, SUITE 550, SAN JOSE, CA 95110  
 T. 408.392.7900

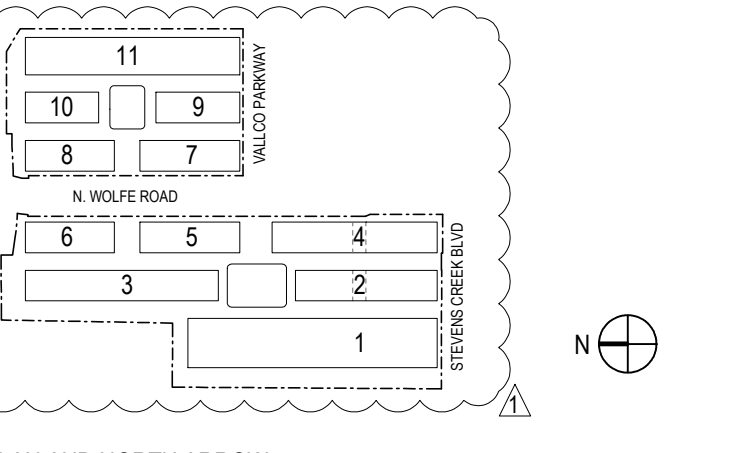
WASTE MANAGEMENT - CUNLITTLE INTERNATIONAL  
 535 NORTH BRAND BLVD, STE 710 GLENDALE, CA 92103  
 T. 626.441.7700

## NOT FOR CONSTRUCTION

**DISCLAIMER**  
 THE ARCHITECT / ENGINEER SHALL HAVE NO RESPONSIBILITY FOR ANY LIABILITY, LOSS, COST, DAMAGE OR EXPENSE ARISING FROM OR RELATING TO ANY USE OF THIS DOCUMENT FOR ANY PURPOSE OTHER THAN ITS INTENDED PURPOSE ON THIS PROJECT. THIS DOCUMENT IS TO BE CONSIDERED IN CONJUNCTION WITH ALL RELATED DOCUMENTATION. ANY DISCREPANCIES IDENTIFIED IN THIS DOCUMENT MUST BE REPORTED IMMEDIATELY TO THE ARCHITECT BEFORE PROCEEDING. CONTRACTORS MUST VERIFY ALL DIMENSIONS PRIOR TO PROCEEDING WITH ANY WORK. ONLY FIGURED DIMENSIONS ARE TO BE USED FOR VERIFICATION.

## SB-35 DEVELOPMENT APPLICATION

REV.	DESCRIPTION	DATE
REV-0	SB-35 DEVELOPMENT APPLICATION	03/27/2018
REV-1	SB-35 DEVELOPMENT APPLICATION	07/31/2018

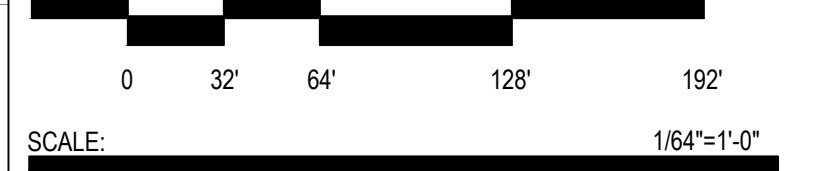


KEY PLAN AND NORTH ARROW

ARCHITECT'S PROJECT NUMBER: 708011

PROJECT PHASE: SB-35 DEVELOPMENT APPLICATION

IF THIS DRAWING IS NOT 36"X48" IT IS A REDUCED PRINT. REFER TO GRAPHIC SCALE.



## PLANTING PLAN STREET LEVEL - GROUNDCOVERS

SHEET TITLE:

# P-0605

SHEET NUMBER:

© 2018 RAFAEL VINOLY ARCHITECTS PC

# VALLCO TOWN CENTER

OWNER - VALLCO PROPERTY OWNER LLC  
965 PAGE MILL ROAD, PALO ALTO, CA 94304  
T. 650-348-1500

ARCHITECTURE - RAFAEL VINOLY ARCHITECTS  
50 VANDAM STREET, NEW YORK, NY 10013  
T. 212-924-6500

ARCHITECTURE - RAFAEL VINOLY ARCHITECTS  
1033 N. WOLFE ROAD, CUPERTINO, CA 95014  
T. 408-627-7900

LANDSCAPE ARCHITECTURE - OLIN PARTNERSHIP LTD.  
192 S. INDEPENDENCE MALL, W. SUITE 1123, PHILADELPHIA, PA 19106  
T. 215-440-0300

CIVIL - SANDIS CIVIL ENGINEERS SURVEYORS PLANNERS, INC.  
1700 S. WINCHESTER BLVD, SUITE 200, CAMPBELL, CA 95008  
T. 408-636-0500

TRANSPORTATION ENGINEERING - ARUP NORTH AMERICA, LTD.  
580 MISSION STREET, SUITE 700, SAN FRANCISCO, CA 94105  
T. 415-567-8445

LIGHTING - ONE LUX STUDIO  
158 WEST 29TH STREET, 10TH FLOOR, NEW YORK, NY 10001  
T. 212-205-6750

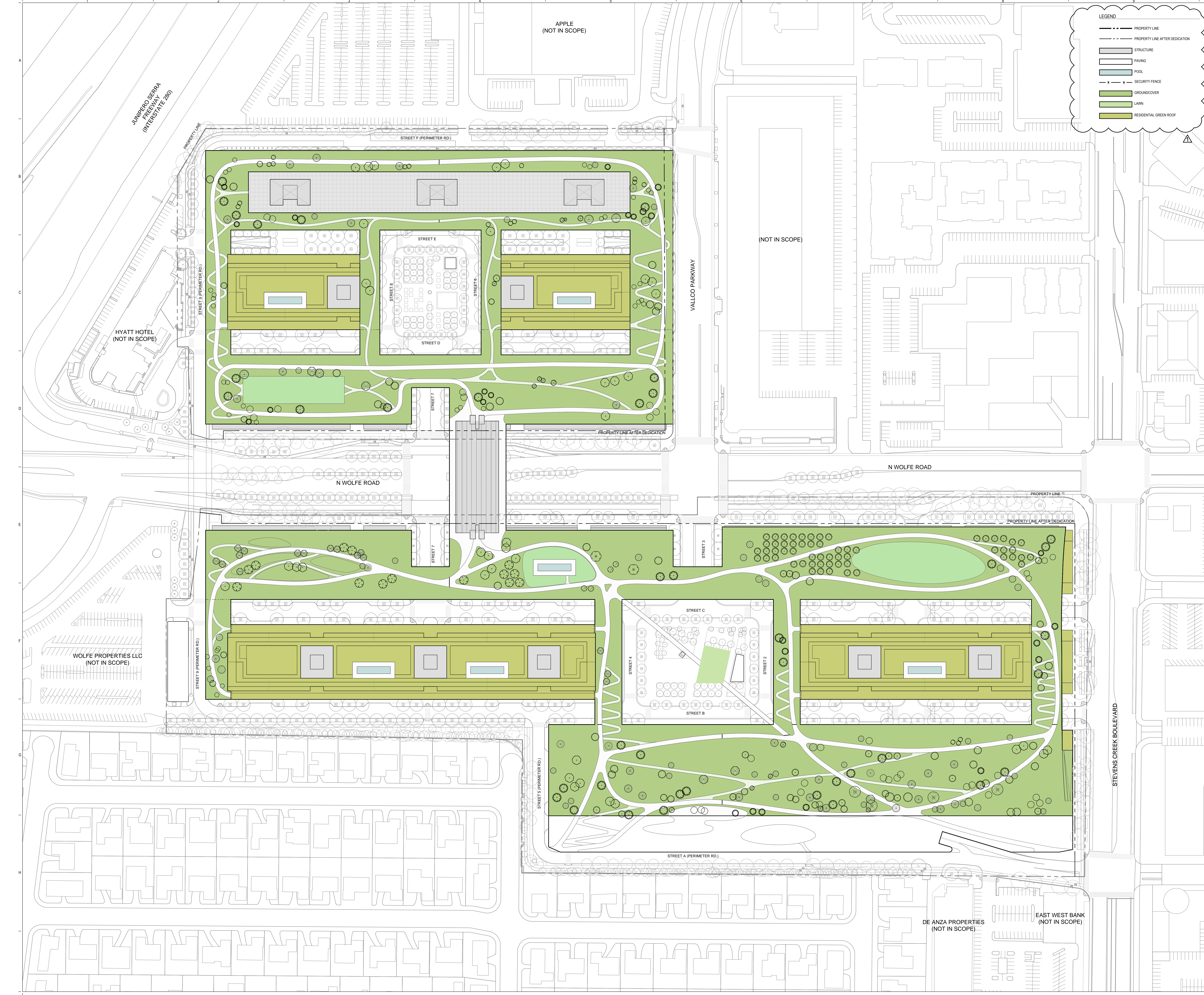
SIGNAGE - EXIT  
1617 JFK BLVD, SUITE 1665, PHILADELPHIA, PA 19103  
T. 215-581-1550

PARKING ENGINEERING - WATRY DESIGN, INC.  
2090 GATEWAY PLACE, SUITE 550, SAN JOSE, CA 95110  
T. 408-392-7900

WASTE MANAGEMENT - CUNLITTLE INTERNATIONAL  
535 NORTH BRAND BLVD, STE 710 GLENDALE, CA 92103  
T. 625-441-7700

**LEGEND**

- PROPERTY LINE
- - - PROPERTY LINE AFTER DEDICATION
- ▭ STRUCTURE
- ▭ PAVING
- ▭ POOL
- - - SECURITY FENCE
- ▭ GROUNDCOVER
- ▭ LAWN
- ▭ RESIDENTIAL GREEN ROOF

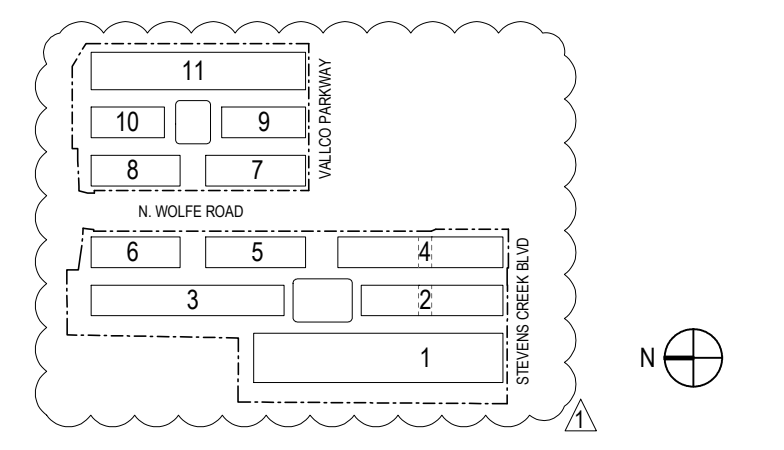


**NOT FOR CONSTRUCTION**

DISCLAIMER  
THE ARCHITECT/ENGINEER SHALL HAVE NO RESPONSIBILITY FOR ANY LIABILITY, LOSS, COST, DAMAGE OR EXPENSE ARISING FROM OR RELATING TO ANY USE OF THIS DOCUMENT FOR ANY PURPOSE OTHER THAN ITS INTENDED PURPOSE ON THIS PROJECT. THIS DOCUMENT IS TO BE CONSIDERED IN CONJUNCTION WITH ALL RELATED DOCUMENTATION ON ANY DISCREPANCIES IDENTIFIED IN THIS DOCUMENT MUST BE REPORTED IMMEDIATELY TO THE ARCHITECT BEFORE PROCEEDING. CONTRACTORS MUST VERIFY ALL DIMENSIONS PRIOR TO PROCEEDING WITH ANY WORK. ONLY FIGURED DIMENSIONS ARE TO BE USED FOR VERIFICATION.

**SB-35 DEVELOPMENT APPLICATION**

REV	DESCRIPTION	DATE
REV-0	SB-35 DEVELOPMENT APPLICATION	03/27/2018
REV-1	SB-35 DEVELOPMENT APPLICATION	07/31/2018



ARCHITECTS PROJECT NUMBER: 708011

PROJECT PHASE: SB-35 DEVELOPMENT APPLICATION

IF THIS DRAWING IS NOT 36"x48" IT IS A REDUCED PRINT. REFER TO GRAPHIC SCALE.



**PLANTING PLAN GREEN ROOF LEVEL - GROUNDCOVERS**

SHEET TITLE:  
**P-0606**

SHEET NUMBER:  
© 2018 RAFAEL VINOLY ARCHITECTS PCL

STREET TREES (In Public Right of Way)



LONDON PLANE TREE  
*Platanus x acerifolia* 'Columbia'  
*Platanus x acerifolia* 'Roberta'

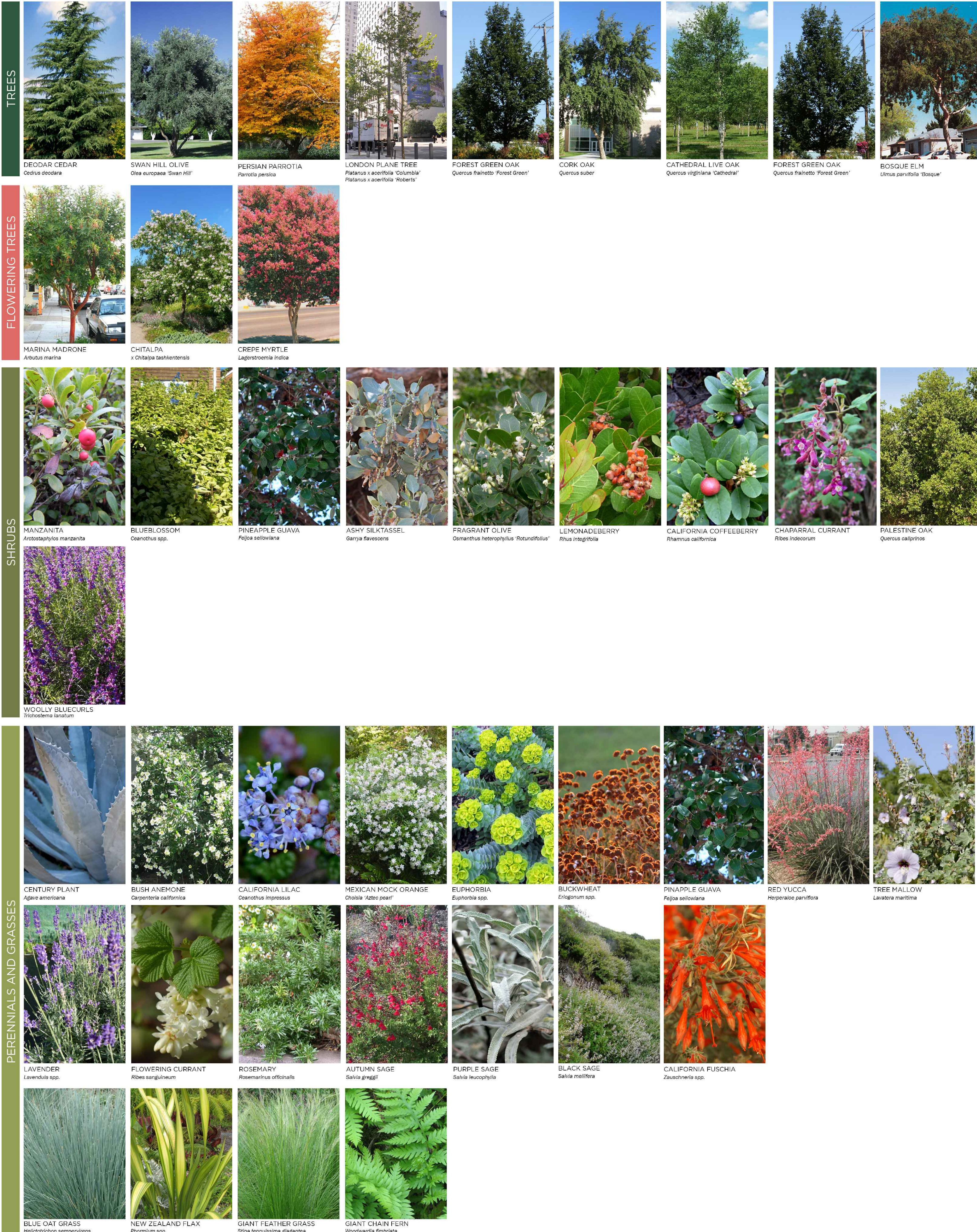
CORK OAK  
*Quercus suber*

CATHEDRAL LIVE OAK  
*Quercus virginiana* 'Cathedral'

FOREST GREEN OAK  
*Quercus frainetto* 'Schmidt'

BOSQUE ELM  
*Ulmus parviflora* 'Bosque'

STREET LEVEL PLANTING PALETTE



**TREES**

DEODAR CEDAR  
*Deodain deodara*

SWAN HILL OLIVE  
*Olea europaea* 'Swan Hill'

PERSIAN PARROTIA  
*Parrotia persica*

LONDON PLANE TREE  
*Platanus x acerifolia* 'Columbia'  
*Platanus x acerifolia* 'Roberta'

FOREST GREEN OAK  
*Quercus frainetto* 'Forest Green'

CORK OAK  
*Quercus suber*

CATHEDRAL LIVE OAK  
*Quercus virginiana* 'Cathedral'

FOREST GREEN OAK  
*Quercus frainetto* 'Forest Green'

BOSQUE ELM  
*Ulmus parviflora* 'Bosque'

**FLOWERING TREES**

MARINA MADRONE  
*Arbutus marina*

CHITALPA  
*x Chitalpa tashkentensis*

CREPE MYRTLE  
*Lagerstroemia indica*

**SHRUBS**

MANZANITA  
*Arctostaphylos manzanita*

BLUEBLOSSOM  
*Oeanothus* spp.

PINEAPPLE GUAVA  
*Fajca setoiflora*

ASHY SILKTASSEL  
*Garrya flavescens*

FRAGRANT OLIVE  
*Osmantbus heterophyllus* 'Rounded'

LEMONADEBERRY  
*Rhus integrifolia*

CALIFORNIA COFFEEBERRY  
*Rhamnus californica*

CHAPARRAL CURRANT  
*Ribes incolorum*

PALESTINE OAK  
*Quercus californica*

WOOLLY BLUE CURLS  
*Trichostema lanatum*

**PERENNIALS AND GRASSES**

CENTURY PLANT  
*Aloe americana*

BUSH ANEMONE  
*Carpanthea californica*

CALIFORNIA LILAC  
*Oeanothus ilinosus*

MEXICAN MOCK ORANGE  
*Chiosia 'Aho pear'*

EUPHORBIA  
*Euphorbia* spp.

BUCKWHEAT  
*Eriogonum* spp.

PINEAPPLE GUAVA  
*Fajca setoiflora*

RED YUCCA  
*Nopuralsid parviflora*

TREE MALLOW  
*Leucosia maritima*

LAVENDER  
*Lavandula* spp.

FLOWERING CURRANT  
*Ribes sanguineum*

ROSEMARY  
*Rosemarthus officinalis*

AUTUMN SAGE  
*Salvia greggii*

PURPLE SAGE  
*Salvia leucophylla*

BLACK SAGE  
*Salvia mellifera*

CALIFORNIA FUSCHIA  
*Zauschneria* spp.

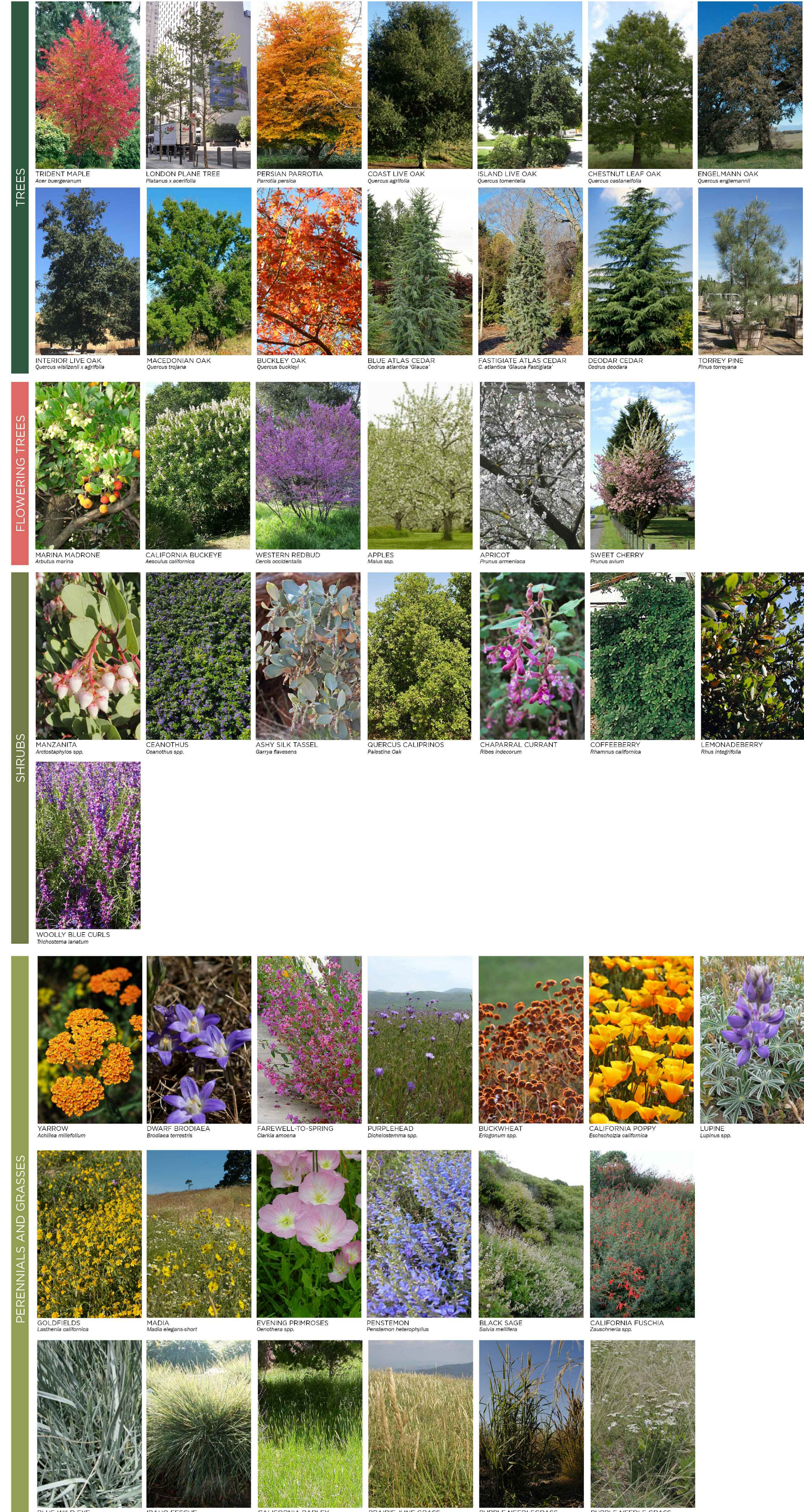
BLUE OAT GRASS  
*Helictotrichon sempervirens*

NEW ZEALAND FLAX  
*Phormium* spp.

GIANT FEATHER GRASS  
*Stipa tenuissima* 'glauca'

GIANT CHAIN FERN  
*Woodwardia fibrinata*

GREEN ROOF LEVEL PLANTING PALETTE



**TREES**

TRIDENT MAPLE  
*Acer buergerianum*

LONDON PLANE TREE  
*Platanus acerifolia*

PERSIAN PARROTIA  
*Parrotia persica*

COAST LIVE OAK  
*Quercus agrifolia*

ISLAND LIVE OAK  
*Quercus laevis*

CHESTNUT LEAF OAK  
*Quercus coccinea*

ENGELMANN OAK  
*Quercus engelmannii*

INTERIOR LIVE OAK  
*Quercus wislizeni* x *agrifolia*

MACEDONIAN OAK  
*Quercus trojana*

BUCKLEY OAK  
*Quercus buckleyi*

BLUE ATLAS CEDAR  
 *Cedrus atlantica* 'Glauca'

FASTIGIATE ATLAS CEDAR  
*C. atlantica* 'Virgata'

DEODAR CEDAR  
 *Cedrus deodara*

TORREY PINE  
*Pinus torreyana*

**FLOWERING TREES**

MARINA MADRONE  
*Arbutus marina*

CALIFORNIA BUCKEYE  
*Aesculus californica*

WESTERN REDBUD  
*Cercis occidentalis*

APPLES  
*Malus* spp.

APRICOT  
*Prunus americana*

SWEET CHERRY  
*Prunus avium*

**SHRUBS**

MANZANITA  
*Arctostaphylos* spp.

CEANOTHUS  
*Oeanothus* spp.

ASHY SILK TASSEL  
*Garrya flavescens*

QUERCUS CALIFORNICA  
*Quercus californica*

CHAPARRAL CURRANT  
*Ribes incolorum*

COFFEEBERRY  
*Rhamnus californica*

LEMONADEBERRY  
*Rhus integrifolia*

WOOLLY BLUE CURLS  
*Trichostema lanatum*

**PERENNIALS AND GRASSES**

YARROW  
*Achillea millefolium*

DWARF BRODIAEA  
*Brodiaea terrestris*

FAREWELL-TO-SPRING  
*Diastromma* spp.

PURPLEHEAD  
*Diastromma* spp.

BUCKWHEAT  
*Eriogonum* spp.

CALIFORNIA POPPY  
*Eschscholzia californica*

LUPINE  
*Lupinus* spp.

GOLDFIELDS  
*Lactuca californica*

MADIA  
*Madia elegans* 'short'

EVENING PRIMROSES  
*Oenothera* spp.

PENSTEMON  
*Penstemon heterophyllus*

BLACK SAGE  
*Salvia mellifera*

CALIFORNIA FUSCHIA  
*Zauschneria* spp.

BLUE WILD EYE  
*Elymus glaucus*

IDAHO FESCUE  
*Festuca idahoensis*

CALIFORNIA BARLEY  
*Hordeum brachyantherum californica*

RAIRIE JUNE GRASS  
*Poaetia macrostachya*

PURPLE NEEDLEGRASS  
*Ischaemum pulchra*

PURPLE NEEDLE GRASS  
*Stipa pulchra*

VALLCO TOWN CENTER

OWNER - VALLCO PROPERTY OWNER LLC  
965 PAGE MILL ROAD, PALO ALTO, CA 94304  
T. 650-344-1500

ARCHITECTURE - RAFAEL VINOLY ARCHITECTS  
50 VANDAM STREET, NEW YORK, NY 10013  
T. 212-924-6560

ARCHITECTURE - RAFAEL VINOLY ARCHITECTS  
1933 N. WOLFE ROAD, CUPERTINO, CA 95014  
T. 408-627-7990

LANDSCAPE ARCHITECTURE - OLIN PARTNERSHIP LTD.  
1700 S. WINCHESTER BLVD., SUITE 201, CAMPBELL, CA 95008  
T. 408-636-0500

CIVIL - SANDHS CIVIL ENGINEERS SURVEYORS PLANNERS, INC.  
580 MISSION STREET, SUITE 700, SAN FRANCISCO, CA 94105  
T. 415-597-9445

TRANSPORTATION ENGINEERING - ARUP NORTH AMERICA, LTD.  
580 MISSION STREET, SUITE 700, SAN FRANCISCO, CA 94105  
T. 415-597-9445

LIGHTING - ONE LUX STUDIO  
158 WEST 29TH STREET, 10TH FLOOR, NEW YORK, NY 10001  
T. 212-205-6790

SIGNAGE - EXIT  
1617 JFK BLVD, SUITE 1665, PHILADELPHIA, PA 19103  
T. 215-961-1950

PARKING ENGINEERING - WATRY DESIGN, INC.  
2096 GATEWAY PLACE, SUITE 550, SAN JOSE, CA 95110  
T. 408-392-7990

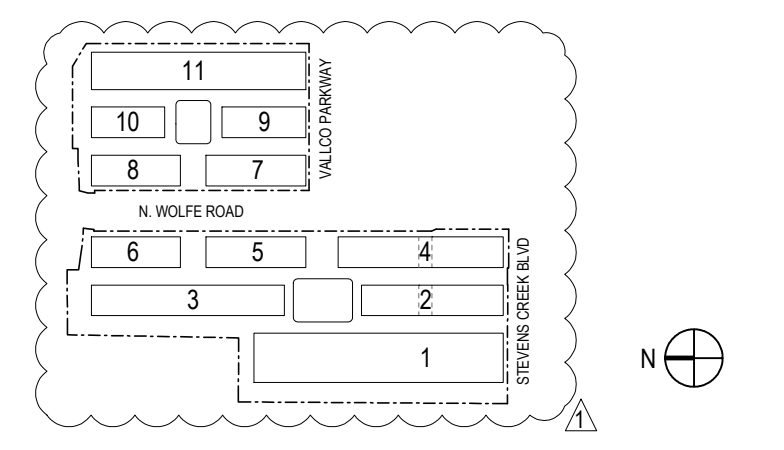
WASTE MANAGEMENT - ONE LITTLE INTERNATIONAL  
535 NORTH BRAND BLVD., STE 710 GLENDALE, CA 92103  
T. 625-441-7700

NOT FOR CONSTRUCTION

DISCLAIMER  
THE ARCHITECT / ENGINEER SHALL HAVE NO RESPONSIBILITY FOR ANY LIABILITY, LOSS, COST, DAMAGE OR EXPENSE ARISING FROM OR RELATING TO ANY USE OF THIS DOCUMENT FOR ANY PURPOSE OTHER THAN ITS INTENDED PURPOSE ON THIS PROJECT. THIS DOCUMENT IS TO BE CONSIDERED IN CONJUNCTION WITH ALL RELATED DOCUMENTATION. ANY DISCREPANCIES IDENTIFIED IN THIS DOCUMENT MUST BE REPORTED IMMEDIATELY TO THE ARCHITECT BEFORE PROCEEDING. CONTRACTORS MUST VERIFY ALL DIMENSIONS PRIOR TO PROCEEDING WITH ANY WORK. ONLY FIGURED DIMENSIONS ARE TO BE USED FOR VERIFICATION.

SB-35 DEVELOPMENT APPLICATION

REV	DESCRIPTION	DATE
REV-0	SB-35 DEVELOPMENT APPLICATION	03/27/2018
REV-1	SB-35 DEVELOPMENT APPLICATION	07/31/2018



KEY PLAN AND NORTH ARROW

ARCHITECTS PROJECT NUMBER: 708011

PROJECT PHASE: SB-35 DEVELOPMENT APPLICATION

IF THIS DRAWING IS NOT 36"X48" IT IS A REDUCED PRINT. REFER TO GRAPHIC SCALE

SCALE: NTS

PLANTING PALETTE

SHEET TITLE:

**P-0607**

SHEET NUMBER: