

VALLCO TOWN CENTER

OWNER - VALLCO PROPERTY OWNER LLC
 965 PAGE MILL ROAD, PALO ALTO, CA 94304
 T. 650-344-1500

ARCHITECTURE - RAFAEL VINOLY ARCHITECTS
 1033 N. WOLFE ROAD, CUPERTINO, CA 95014
 T. 408-627-0500

ARCHITECTURE - RAFAEL VINOLY ARCHITECTS
 1033 N. WOLFE ROAD, CUPERTINO, CA 95014
 T. 408-627-0500

LANDSCAPE ARCHITECTURE - OLIN PARTNERSHIP LTD.
 192 S. INDEPENDENCE MALL, W. SUITE 1120, PHILADELPHIA, PA 19106
 T. 215-440-0000

CIVIL - SANDIS CIVIL ENGINEERS SURVEYORS PLANNERS, INC.
 1700 S. WINCHESTER BLVD, SUITE 200, CAMPBELL, CA 95008
 T. 408-636-0500

TRANSPORTATION ENGINEERING - ARUP NORTH AMERICA, LTD.
 580 MISSION STREET, SUITE 700, SAN FRANCISCO, CA 94105
 T. 415-557-9445

LIGHTING - ONE LUX STUDIO
 158 WEST 29TH STREET, 10TH FLOOR, NEW YORK, NY 10001
 T. 212-205-6790

SIGNAGE - EXIT
 1817 JFK BLVD, SUITE 1665, PHILADELPHIA, PA 19103
 T. 215-581-1550

PARKING ENGINEERING - WATRY DESIGN, INC.
 2096 GATEWAY PLACE, SUITE 550, SAN JOSE, CA 95110
 T. 408-392-7900

WASTE MANAGEMENT - CINLITTLE INTERNATIONAL
 535 NORTH BRAND BLVD, STE 710 GLENDALE, CA 92103
 T. 626-441-7700

LEGEND

- PROPERTY LINE
- - - PROPERTY LINE AFTER DEDICATION
- ▨ GARAGE EXTENTS
- ▨ STRUCTURE
- ▨ STRUCTURE ABOVE
- ▨ TREE PROTECTION AREA
- CHAINLINK TREE PROTECTION FENCE

● TAG#	EXISTING STANDARD TREE TO REMAIN	334
⊗ TAG#	EXISTING STANDARD TREE TO BE REMOVED	374
⊙ TAG#	EXISTING SPECIMEN TREE TO BE TRANSPLANTED	6
⊗ TAG#	DEVELOPMENT TREE TO BE REMOVED	93
● TAG#	EXISTING STREET TREE TO REMAIN	113
⊗ TAG#	EXISTING STREET TREE TO BE REMOVED	75
TOTAL TREE		995

FOR DETAILS OF EXISTING TREE CONDITIONS, SEE ARBORIST REPORT, DATED JULY 31, 2018, PREPARED BY WALTER LEVISON, CONSULTING ARBORIST (WALCA).
 TREE PROTECTION ARE PROVIDED BASED ON ARBORIST TREE PROTECTION RECOMMENDATIONS, IN CHAPTER 11.0.



NOT FOR CONSTRUCTION

DISCLAIMER
 THE ARCHITECT/ENGINEER SHALL HAVE NO RESPONSIBILITY FOR ANY LIABILITY, LOSS, COST, DAMAGE OR EXPENSE ARISING FROM OR RELATING TO ANY USE OF THIS DOCUMENT FOR ANY PURPOSE OTHER THAN ITS INTENDED PURPOSE ON THIS PROJECT. THIS DOCUMENT IS TO BE CONSIDERED IN CONJUNCTION WITH ALL RELATED DOCUMENTATION ON ANY DISCREPANCIES IDENTIFIED IN THIS DOCUMENT MUST BE REPORTED IMMEDIATELY TO THE ARCHITECT BEFORE PROCEEDING. CONTRACTORS MUST VERIFY ALL DIMENSIONS PRIOR TO PROCEEDING WITH ANY WORK. ONLY FIGURED DIMENSIONS ARE TO BE USED FOR VERIFICATION.

SB-35 DEVELOPMENT APPLICATION

REV	DESCRIPTION	DATE
REV-0	SB-35 DEVELOPMENT APPLICATION	07/31/2018
REV-1	SB-35 APPLICATION REVISIONS	08/06/2018

KEY PLAN AND NORTH ARROW

ARCHITECTS PROJECT NUMBER: 708011

PROJECT PHASE: SB-35 DEVELOPMENT APPLICATION

IF THIS DRAWING IS NOT 36"X48" IT IS A REDUCED PRINT. REFER TO GRAPHIC SCALE.

SCALE: 1/8"=1'-0"

TREE PROTECTION PLAN

SHEET TITLE:
P-0602A

SHEET NUMBER:
 © 2018 RAFAEL VINOLY ARCHITECTS PCL

VALLCO TOWN CENTER

OWNER - VALLCO PROPERTY OWNER LLC
 965 PAGE MILL ROAD, PALO ALTO, CA 94304
 T. 650-344-1500

ARCHITECTURE - RAFAEL VINOLY ARCHITECTS
 50 VANDAN STREET, NEW YORK, NY 10013
 T. 212-924-5900

ARCHITECTURE - RAFAEL VINOLY ARCHITECTS
 1033 N. WOLFE ROAD, CUPERTINO, CA 95014
 T. 408-627-7090

LANDSCAPE ARCHITECTURE - OLIN PARTNERSHIP LTD.
 150 S. INDEPENDENCE MALL W. SUITE 1123, PHILADELPHIA, PA 19106
 T. 215-440-9300

CIVIL - SANDIS CIVIL ENGINEERS SURVEYORS PLANNERS, INC.
 1700 S. WINCHESTER BLVD, SUITE 200, CAMPBELL, CA 95008
 T. 408-636-9300

TRANSPORTATION ENGINEERING - ARUP NORTH AMERICA, LTD.
 560 MISSION STREET, SUITE 700, SAN FRANCISCO, CA 94105
 T. 415-527-5452

LIGHTING - ONE LUX STUDIO
 158 WEST 29TH STREET, 10TH FLOOR, NEW YORK, NY 10001
 T. 212-201-5790

SIGNAGE - EXIT
 1617 JFK BLVD, SUITE 1665, PHILADELPHIA, PA 19103
 T. 215-981-1990

PARKING ENGINEERING - WATRY DESIGN, INC.
 2099 GATEWAY PLACE, SUITE 550, SAN JOSE, CA 95110
 T. 408-392-7900

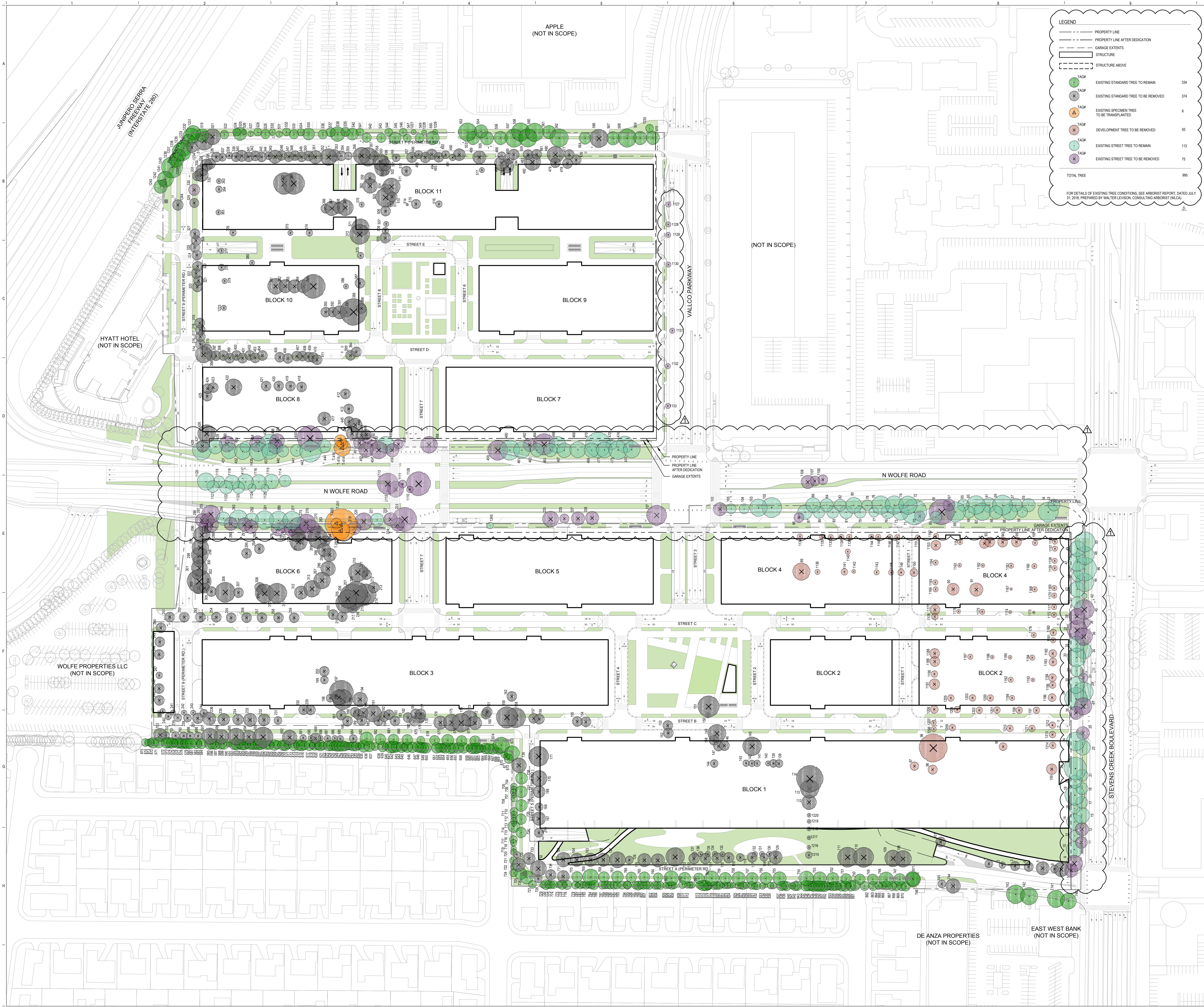
WASTE MANAGEMENT - CH2MHILL INTERNATIONAL
 535 NORTH BRAND BLVD, STE 710 GLENDALE, CA 92103
 T. 626-441-7700

LEGEND

- PROPERTY LINE
- PROPERTY LINE AFTER DEDICATION
- GARAGE EXTENTS
- STRUCTURE
- STRUCTURE ABOVE

● TAG#	EXISTING STANDARD TREE TO REMAIN	334
⊗ TAG#	EXISTING STANDARD TREE TO BE REMOVED	374
▲ TAG#	EXISTING SPECIMEN TREE TO BE TRANSPLANTED	6
⊗ TAG#	DEVELOPMENT TREE TO BE REMOVED	93
● TAG#	EXISTING STREET TREE TO REMAIN	113
⊗ TAG#	EXISTING STREET TREE TO BE REMOVED	75
TOTAL TREE		995

FOR DETAILS OF EXISTING TREE CONDITIONS, SEE ARBORIST REPORT, DATED JULY 31, 2018, PREPARED BY WALTER LEVISON, CONSULTING ARBORIST (W/LCA).

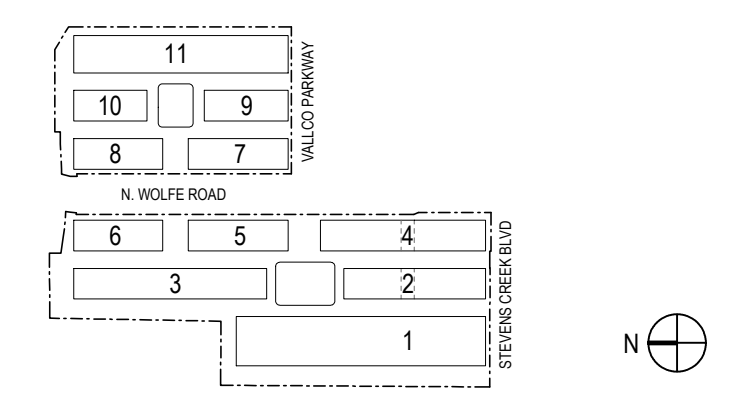


NOT FOR CONSTRUCTION

DISCLAIMER
 THE ARCHITECT / ENGINEER SHALL HAVE NO RESPONSIBILITY FOR ANY LIABILITY, LOSS, COST, DAMAGE OR EXPENSE ARISING FROM OR RELATING TO ANY USE OF THIS DOCUMENT FOR ANY PURPOSE OTHER THAN ITS INTENDED PURPOSE ON THIS PROJECT. THIS DOCUMENT IS TO BE CONSIDERED IN CONJUNCTION WITH ALL RELATED DOCUMENTATION. ANY DISCREPANCIES IDENTIFIED IN THIS DOCUMENT MUST BE REPORTED IMMEDIATELY TO THE ARCHITECT BEFORE PROCEEDING. CONTRACTORS MUST VERIFY ALL DIMENSIONS PRIOR TO PROCEEDING WITH ANY WORK. ONLY FIGURED DIMENSIONS ARE TO BE USED FOR VERIFICATION.

SB-35 DEVELOPMENT APPLICATION

REV.	DESCRIPTION	DATE
REV-0	SB-35 DEVELOPMENT APPLICATION	03/27/2018
REV-1	SB-35 DEVELOPMENT APPLICATION	07/31/2018
REV-2	SB-35 APPLICATION REVISIONS	08/06/2018



KEY PLAN AND NORTH ARROW

ARCHITECTS PROJECT NUMBER: 708011

PROJECT PHASE: SB-35 DEVELOPMENT APPLICATION

IF THIS DRAWING IS NOT 36"x48" IT IS A REDUCED PRINT; REFER TO GRAPHIC SCALE



TREE DISPOSITION PLAN

SHEET TITLE:

P-0602B

SHEET NUMBER:



LEGEND

- PROPERTY LINE
- PROPERTY LINE AFTER DEDICATION
- GARAGE EXTENTS
- STRUCTURE
- STRUCTURE ABOVE

TAG#	EXISTING STANDARD TREE TO REMAIN	334
TAG#	EXISTING SPECIMEN TREE TO BE TRANSPLANTED	6
TAG#	EXISTING STREET TREE TO REMAIN	113
TAG#	PROPOSED STREET TREE	107
TAG#	PROPOSED STANDARD TREE	504
TAG#	PROPOSED FLOWERING TREE	53
	TOTAL TREE	1117

VALLCO TOWN CENTER

OWNER - VALLCO PROPERTY OWNER LLC
 565 PACE HILL ROAD, PALO ALTO, CA 94304
 T. 650.344.1500

ARCHITECTURE - RAFAEL VINOLY ARCHITECTS
 50 VANAM STREET, NEW YORK, NY 10013
 T. 212.924.0500

ARCHITECTURE - RAFAEL VINOLY ARCHITECTS
 103 N. WOLFE ROAD, CUPERTINO, CA 95014
 T. 408.627.7000

LANDSCAPE ARCHITECTURE - OLIN PARTNERSHIP LTD.
 150 S. INDEPENDENCE MALL W. SUITE 1123, PHILADELPHIA, PA 19106
 T. 215.440.0000

CIVIL - SANDIS CIVIL ENGINEERS SURVEYORS PLANNERS, INC.
 1700 S. WINCHESTER BLVD. SUITE 200, CAMPBELL, CA 95008
 T. 408.636.0000

TRANSPORTATION ENGINEERING - ARUP NORTH AMERICA, LTD.
 500 MISSION STREET, SUITE 700, SAN FRANCISCO, CA 94105
 T. 415.557.5445

LIGHTING - ONE LUX STUDIO
 158 WEST 20TH STREET, 10TH FLOOR, NEW YORK, NY 10011
 T. 212.201.5790

SCENIC - EXCT
 1617 JFK BLVD, SUITE 1665, PHILADELPHIA, PA 19103
 T. 215.561.1990

PARKING ENGINEERING - WATRY DESIGN, INC.
 2099 GATEWAY PLACE, SUITE 550, SAN JOSE, CA 95110
 T. 408.392.7900

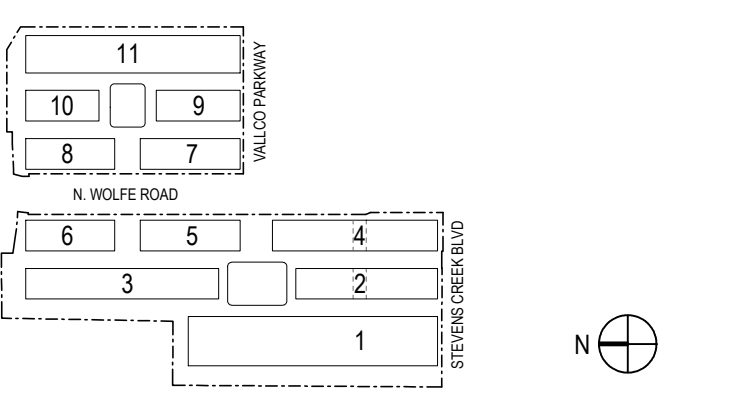
WASTE MANAGEMENT - COUNTESS INTERNATIONAL
 535 NORTH BRAND BLVD, STE 710 GLENDALE, CA 92103
 T. 626.441.7700

NOT FOR CONSTRUCTION

DISCLAIMER
 THE ARCHITECT / ENGINEER SHALL HAVE NO RESPONSIBILITY FOR ANY LIABILITY, LOSS, COST, DAMAGE OR EXPENSE ARISING FROM OR RELATING TO ANY USE OF THIS DOCUMENT FOR ANY PURPOSE OTHER THAN ITS INTENDED PURPOSE ON THIS PROJECT. THIS DOCUMENT IS TO BE CONSIDERED IN CONJUNCTION WITH ALL RELATED DOCUMENTATION. ANY DISCREPANCIES IDENTIFIED IN THIS DOCUMENT MUST BE REPORTED IMMEDIATELY TO THE ARCHITECT BEFORE PROCEEDING. CONTRACTORS MUST VERIFY ALL DIMENSIONS PRIOR TO PROCEEDING WITH ANY WORK. ONLY FIGURED DIMENSIONS ARE TO BE USED FOR VERIFICATION.

SB-35 DEVELOPMENT APPLICATION

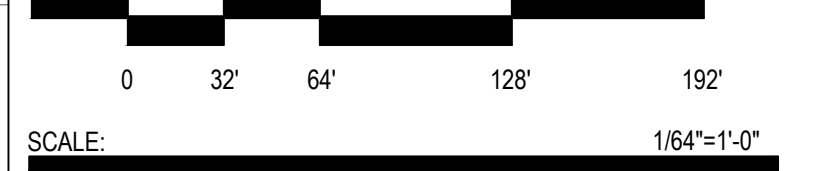
REV.	DESCRIPTION	DATE
REV-0	SB-35 DEVELOPMENT APPLICATION	03/27/2018
REV-1	SB-35 DEVELOPMENT APPLICATION	07/31/2018
REV-2	SB-35 APPLICATION REVISIONS	08/06/2018



KEY PLAN AND NORTH ARROW
 ARCHITECTS PROJECT NUMBER: 708011

PROJECT PHASE: SB-35 DEVELOPMENT APPLICATION

IF THIS DRAWING IS NOT 36"X48" IT IS A REDUCED PRINT. REFER TO GRAPHIC SCALE.



LANDSCAPE PLAN STREET LEVEL

SHEET TITLE:

P-0603

SHEET NUMBER: