

# VALLCO TOWN CENTER



OWNER - VALLCO PROPERTY OWNER LLC  
965 PAGE MILL ROAD, PALO ALTO, CA 94304  
T. 650-344-1500

ARCHITECTURE - RAFAEL VINOLY ARCHITECTS  
50 VANDAM STREET, NEW YORK, NY 10013  
T. 212-924-0500

ARCHITECTURE - RAFAEL VINOLY ARCHITECTS  
1033 N. WOLFE ROAD, CUPERTINO, CA 95014  
T. 408-627-7000

LANDSCAPE ARCHITECTURE - OLIN PARTNERSHIP LTD.  
150 S. INDEPENDENCE MALL, IV. SUITE 1103, PHILADELPHIA, PA 19106  
T. 215-440-0000

CIVIL - SANDIS CIVIL ENGINEERS SURVEYORS PLANNERS, INC.  
1700 S. WINCHESTER BLVD., SUITE 200, CAMPBELL, CA 95008  
T. 408-636-9500

TRANSPORTATION ENGINEERING - ARUP NORTH AMERICA, LTD.  
860 MISSION STREET, SUITE 700, SAN FRANCISCO, CA 94105  
T. 415-567-9445

LIGHTING - ONE LUX STUDIO  
158 WEST 29TH STREET, 10TH FLOOR, NEW YORK, NY 10001  
T. 212-205-6750

SIGNAGE - EXIT  
1617 JPK BLVD, SUITE 1665, PHILADELPHIA, PA 19103  
T. 215-661-1950

PARKING ENGINEERING - WATRY DESIGN, INC.  
2096 GATEWAY PLACE, SUITE 550, SAN JOSE, CA 95110  
T. 408-392-7500

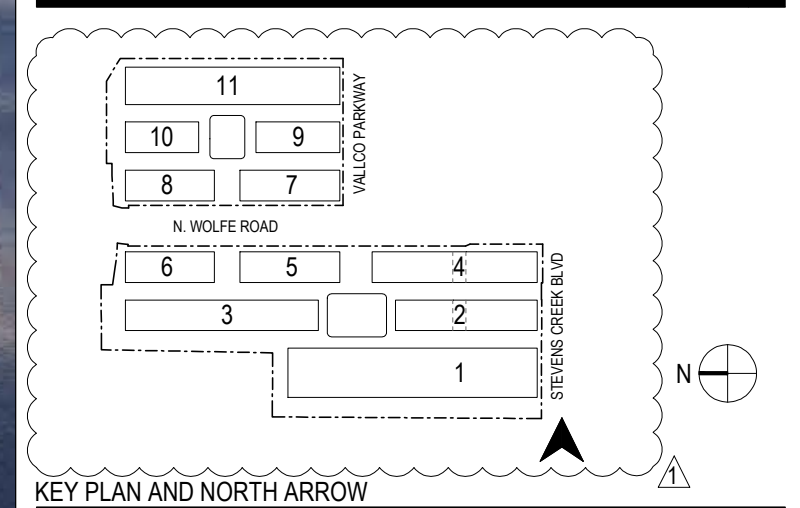
WASTE MANAGEMENT - CINLITTLE INTERNATIONAL  
535 NORTH BRAND BLVD, STE 710 GLENDALE, CA 92103  
T. 626-441-7700

## NOT FOR CONSTRUCTION

DISCLAIMER  
THE ARCHITECT/ENGINEER SHALL HAVE NO RESPONSIBILITY FOR ANY LIABILITY, LOSS, COST, DAMAGE OR EXPENSE ARISING FROM OR RELATING TO ANY USE OF THIS DOCUMENT FOR ANY PURPOSE OTHER THAN ITS INTENDED PURPOSE ON THIS PROJECT. THIS DOCUMENT IS TO BE CONSIDERED IN CONJUNCTION WITH ALL RELATED DOCUMENTATION. ANY DISCREPANCIES IDENTIFIED IN THIS DOCUMENT MUST BE REPORTED IMMEDIATELY TO THE ARCHITECT BEFORE PROCEEDING. CONTRACTORS MUST VERIFY ALL DIMENSIONS PRIOR TO PROCEEDING WITH ANY WORK. ONLY FIGURED DIMENSIONS ARE TO BE USED FOR VERIFICATION.

## SB-35 DEVELOPMENT APPLICATION

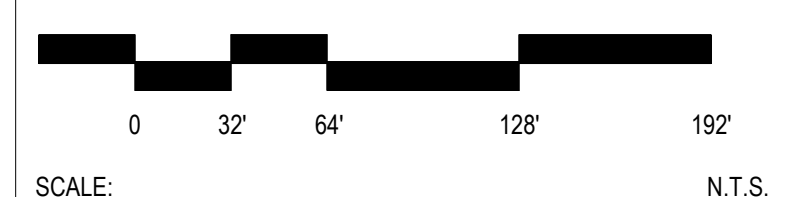
REV	DESCRIPTION	DATE
REV-0	SB-35 DEVELOPMENT APPLICATION	03/27/2018
REV-1	SB-35 APPLICATION REVISIONS	07/31/2018



ARCHITECTS PROJECT NUMBER: 708011

PROJECT PHASE: SB-35 DEVELOPMENT APPLICATION

IF THIS DRAWING IS NOT 36"x48" IT IS A REDUCED PRINT. REFER TO GRAPHIC SCALE.



VISUALIZATIONS - STEVEN CREEK BLVD. AND STREET A ENTRANCE VIEW

SHEET TITLE:

**P-0001**

SHEET NUMBER: © 2018 RAFAEL VINOLY ARCHITECTS PCL

NOTES: LOCATION OF RETAIL AND ENTERTAINMENT VENUES ARE ILLUSTRATIVE AND MAY BE RELOCATED

# VALLCO TOWN CENTER

OWNER - VALLCO PROPERTY OWNER LLC  
965 PAGE MILL ROAD, PALO ALTO, CA 94304  
T. 650-344-1500

ARCHITECTURE - RAFAEL VINOLY ARCHITECTS  
50 VANDAM STREET, NEW YORK, NY 10013  
T. 212-924-0500

ARCHITECTURE - RAFAEL VINOLY ARCHITECTS  
1033 N. WOLFE ROAD, CUPERTINO, CA 95014  
T. 408-627-7000

LANDSCAPE ARCHITECTURE - OLIN PARTNERSHIP LTD.  
150 S. INDEPENDENCE MALL IV, SUITE 1103, PHILADELPHIA, PA 19106  
T. 215-440-0030

CIVIL - SANDIS CIVIL ENGINEERS SURVEYORS PLANNERS, INC.  
1700 S. WINCHESTER BLVD, SUITE 200, CAMPBELL, CA 95008  
T. 408-636-0500

TRANSPORTATION ENGINEERING - ARUP NORTH AMERICA, LTD.  
860 MISSION STREET, SUITE 700, SAN FRANCISCO, CA 94105  
T. 415-567-9445

LIGHTING - ONE LUX STUDIO  
158 WEST 29TH STREET, 10TH FLOOR, NEW YORK, NY 10001  
T. 212-201-9750

SIGNAGE - EXIT  
1617 JPK BLVD, SUITE 1666, PHILADELPHIA, PA 19103  
T. 215-661-1950

PARKING ENGINEERING - WATRY DESIGN, INC.  
2096 GATEWAY PLACE, SUITE 550, SAN JOSE, CA 95110  
T. 408-392-7000

WASTE MANAGEMENT - CINLITTLE INTERNATIONAL  
535 NORTH BRAND BLVD, STE 710 GLENDALE, CA 92103  
T. 626-441-7700

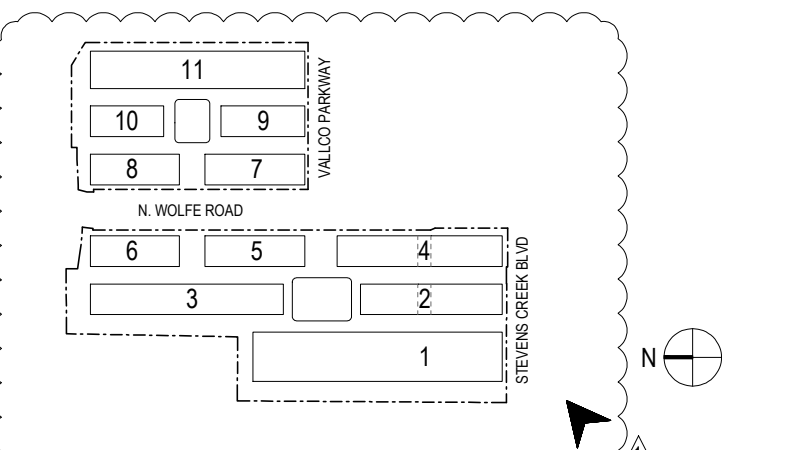


NOT FOR CONSTRUCTION

DISCLAIMER  
THE ARCHITECT/ENGINEER SHALL HAVE NO RESPONSIBILITY FOR ANY LIABILITY, LOSS, COST, DAMAGE OR EXPENSE ARISING FROM OR RELATING TO ANY USE OF THIS DOCUMENT FOR ANY PURPOSE OTHER THAN ITS INTENDED PURPOSE ON THIS PROJECT. THIS DOCUMENT IS TO BE CONSIDERED IN CONJUNCTION WITH ALL RELATED DOCUMENTATION. ANY DISCREPANCIES IDENTIFIED IN THIS DOCUMENT MUST BE REPORTED IMMEDIATELY TO THE ARCHITECT BEFORE PROCEEDING. CONTRACTORS MUST VERIFY ALL DIMENSIONS PRIOR TO PROCEEDING WITH ANY WORK. ONLY FIGURED DIMENSIONS ARE TO BE USED FOR VERIFICATION.

SB-35 DEVELOPMENT APPLICATION

REV	DESCRIPTION	DATE
REV-0	SB-35 DEVELOPMENT APPLICATION	03/27/2018
REV-1	SB-35 APPLICATION REVISIONS	07/31/2018



KEY PLAN AND NORTH ARROW

ARCHITECTS PROJECT NUMBER 708911

PROJECT PHASE SB-35 DEVELOPMENT APPLICATION

IF THIS DRAWING IS NOT 36"x48" IT IS A REDUCED PRINT. REFER TO GRAPHIC SCALE.

SCALE 0 32 64 128 192 N.T.S.

VISUALIZATIONS - STEVEN CREEK BLVD. STREET VIEW

SHEET TITLE

P-0002

SHEET NUMBER

© 2018 RAFAEL VINOLY ARCHITECTS PCL

# VALLCO TOWN CENTER

OWNER - VALLCO PROPERTY OWNER LLC  
965 PAGE MILL ROAD, PALO ALTO, CA 94304  
T. 650-344-1500

ARCHITECTURE - RAFAEL VINOLY ARCHITECTS  
50 VANDAM STREET, NEW YORK, NY 10013  
T. 212-924-0500

ARCHITECTURE - RAFAEL VINOLY ARCHITECTS  
1033 N. WOLFE ROAD, CUPERTINO, CA 95014  
T. 408-627-7000

LANDSCAPE ARCHITECTURE - OLIN PARTNERSHIP LTD.  
102 S. INDEPENDENCE MALL, IV, SUITE 1103, PHILADELPHIA, PA 19106  
T. 215-440-0000

CIVIL - SANDIS CIVIL ENGINEERS SURVEYORS PLANNERS, INC.  
1705 S. WINCHESTER BLVD, SUITE 200, CAMPSBELL, CA 95008  
T. 408-636-0500

TRANSPORTATION ENGINEERING - ARUP NORTH AMERICA, LTD.  
860 MISSION STREET, SUITE 700, SAN FRANCISCO, CA 94105  
T. 415-567-9445

LIGHTING - ONE LUX STUDIO  
158 WEST 29TH STREET, 10TH FLOOR, NEW YORK, NY 10001  
T. 212-201-6750

SIGNAGE - EXIT  
1617 JPK BLVD, SUITE 1665, PHILADELPHIA, PA 19103  
T. 215-661-1950

PARKING ENGINEERING - WATRY DESIGN, INC.  
2096 GATEWAY PLACE, SUITE 550, SAN JOSE, CA 95110  
T. 408-392-7900

WASTE MANAGEMENT - CINLITTLE INTERNATIONAL  
535 NORTH BRAND BLVD, STE 710 GLENDALE, CA 92103  
T. 626-441-7700

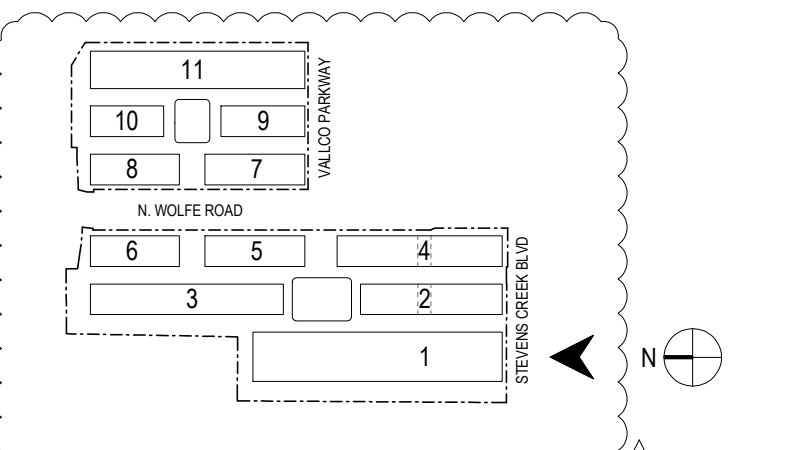


NOT FOR CONSTRUCTION

DISCLAIMER  
THE ARCHITECT/ENGINEER SHALL HAVE NO RESPONSIBILITY FOR ANY LIABILITY, LOSS, COST, DAMAGE OR EXPENSE ARISING FROM OR RELATING TO ANY USE OF THIS DOCUMENT FOR ANY PURPOSE OTHER THAN ITS INTENDED PURPOSE ON THIS PROJECT. THIS DOCUMENT IS TO BE CONSIDERED IN CONJUNCTION WITH ALL RELATED DOCUMENTATION. ANY DISCREPANCIES IDENTIFIED IN THIS DOCUMENT MUST BE REPORTED IMMEDIATELY TO THE ARCHITECT BEFORE PROCEEDING. CONTRACTORS MUST VERIFY ALL DIMENSIONS PRIOR TO PROCEEDING WITH ANY WORK. ONLY FIGURED DIMENSIONS ARE TO BE USED FOR VERIFICATION.

SB-35 DEVELOPMENT APPLICATION

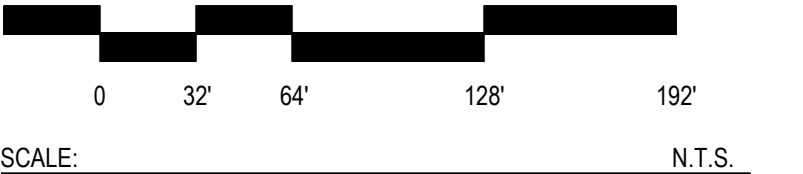
REV	DESCRIPTION	DATE
REV-0	SB-35 DEVELOPMENT APPLICATION	03/27/2018
REV-1	SB-35 APPLICATION REVISIONS	07/31/2018



ARCHITECTS PROJECT NUMBER 708011

PROJECT PHASE SB-35 DEVELOPMENT APPLICATION

IF THIS DRAWING IS NOT 36"x48" IT IS A REDUCED PRINT. REFER TO GRAPHIC SCALE.



SCALE N.T.S.

VISUALIZATIONS - VALLCO BIKE HUB VIEW

SHEET TITLE

P-0003

SHEET NUMBER

© 2018 RAFAEL VINOLY ARCHITECTS PCL

NOTES: LOCATION OF RETAIL AND ENTERTAINMENT VENUES ARE ILLUSTRATIVE AND MAY BE RELOCATED.

# VALLCO TOWN CENTER

OWNER - VALLCO PROPERTY OWNER LLC  
965 PAGE MILL ROAD, PALO ALTO, CA 94304  
T. 650-344-1500

ARCHITECTURE - RAFAEL VINOLY ARCHITECTS  
50 VANDAM STREET, NEW YORK, NY 10013  
T. 212-924-0500

ARCHITECTURE - RAFAEL VINOLY ARCHITECTS  
1033 N. WOLFE ROAD, CUPERTINO, CA 95014  
T. 408-627-7000

LANDSCAPE ARCHITECTURE - OLIN PARTNERSHIP LTD.  
102 S. INDEPENDENCE MALL IV, SUITE 1120, PHILADELPHIA, PA 19106  
T. 215-440-0000

CIVIL - SANDIS CIVIL ENGINEERS SURVEYORS PLANNERS, INC.  
1700 S. WINCHESTER BLVD, SUITE 200, CAMPBELL, CA 95008  
T. 408-636-0900

TRANSPORTATION ENGINEERING - ARUP NORTH AMERICA, LTD.  
660 MISSION STREET, SUITE 700, SAN FRANCISCO, CA 94105  
T. 415-567-9445

LIGHTING - ONE LUX STUDIO  
158 WEST 29TH STREET, 10TH FLOOR, NEW YORK, NY 10001  
T. 212-205-6750

SIGNAGE - EXIT  
1617 JPK BLVD, SUITE 1666, PHILADELPHIA, PA 19103  
T. 215-661-1950

PARKING ENGINEERING - WATRY DESIGN, INC.  
2090 GATEWAY PLACE, SUITE 550, SAN JOSE, CA 95110  
T. 408-392-7900

WASTE MANAGEMENT - CINLITTLE INTERNATIONAL  
535 NORTH BRAND BLVD, STE 710 GLENDALE, CA 92103  
T. 626-441-7700

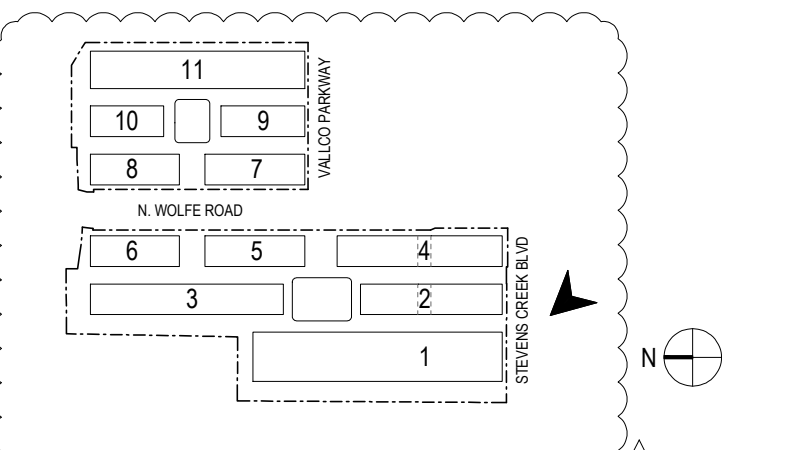


## NOT FOR CONSTRUCTION

DISCLAIMER  
THE ARCHITECT/ENGINEER SHALL HAVE NO RESPONSIBILITY FOR ANY LIABILITY, LOSS, COST, DAMAGE OR EXPENSE ARISING FROM OR RELATING TO ANY USE OF THIS DOCUMENT FOR ANY PURPOSE OTHER THAN ITS INTENDED PURPOSE ON THIS PROJECT. THIS DOCUMENT IS TO BE CONSIDERED IN CONJUNCTION WITH ALL RELATED DOCUMENTATION. ANY DISCREPANCIES IDENTIFIED IN THIS DOCUMENT MUST BE REPORTED IMMEDIATELY TO THE ARCHITECT BEFORE PROCEEDING. CONTRACTORS MUST VERIFY ALL DIMENSIONS PRIOR TO PROCEEDING WITH ANY WORK. ONLY FIGURED DIMENSIONS ARE TO BE USED FOR VERIFICATION.

## SB-35 DEVELOPMENT APPLICATION

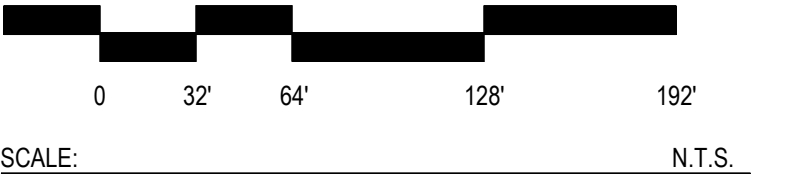
REV	DESCRIPTION	DATE
REV-0	SB-35 DEVELOPMENT APPLICATION	03/27/2018
REV-1	SB-35 APPLICATION REVISIONS	07/31/2018



ARCHITECTS PROJECT NUMBER: 708911

PROJECT PHASE: SB-35 DEVELOPMENT APPLICATION

IF THIS DRAWING IS NOT 36" x 48" IT IS A REDUCED PRINT. REFER TO GRAPHIC SCALE.



SCALE: N.T.S.

VISUALIZATIONS - STEVEN CREEK BLVD. AND STREET B VIEW

SHEET TITLE:

**P-0004**

SHEET NUMBER:

NOTES: LOCATION OF RETAIL AND ENTERTAINMENT VENUES ARE ILLUSTRATIVE AND MAY BE RELOCATED.

# VALLCO TOWN CENTER

OWNER - VALLCO PROPERTY OWNER LLC  
965 PAGE MILL ROAD, PALO ALTO, CA 94304  
T. 650-344-1300

ARCHITECTURE - RAFAEL VINOLY ARCHITECTS  
50 VANDAM STREET, NEW YORK, NY 10013  
T. 212-924-0500

ARCHITECTURE - RAFAEL VINOLY ARCHITECTS  
1033 N. WOLFE ROAD, CUPERTINO, CA 95014  
T. 408-627-7000

LANDSCAPE ARCHITECTURE - OLIN PARTNERSHIP LTD.  
150 S. INDEPENDENCE MALL, W. SUITE 1103, PHILADELPHIA, PA 19106  
T. 215-440-0030

CIVIL - SANDIS CIVIL ENGINEERS SURVEYORS PLANNERS, INC.  
1705 S. WINCHESTER BLVD, SUITE 200, CAMPBELL, CA 95008  
T. 408-636-0900

TRANSPORTATION ENGINEERING - ARUP NORTH AMERICA, LTD.  
880 MISSION STREET, SUITE 700, SAN FRANCISCO, CA 94105  
T. 415-567-9445

LIGHTING - ONE LUX STUDIO  
158 WEST 29TH STREET, 10TH FLOOR, NEW YORK, NY 10001  
T. 212-203-9790

SIGNAGE - EXIT  
1617 JPK BLVD, SUITE 1665, PHILADELPHIA, PA 19103  
T. 215-561-1950

PARKING ENGINEERING - WATRY DESIGN, INC.  
2096 GATEWAY PLACE, SUITE 550, SAN JOSE, CA 95110  
T. 408-392-7900

WASTE MANAGEMENT - CINLITTLE INTERNATIONAL  
535 NORTH BRAND BLVD, STE 710 GLENDALE, CA 92033  
T. 626-441-7700



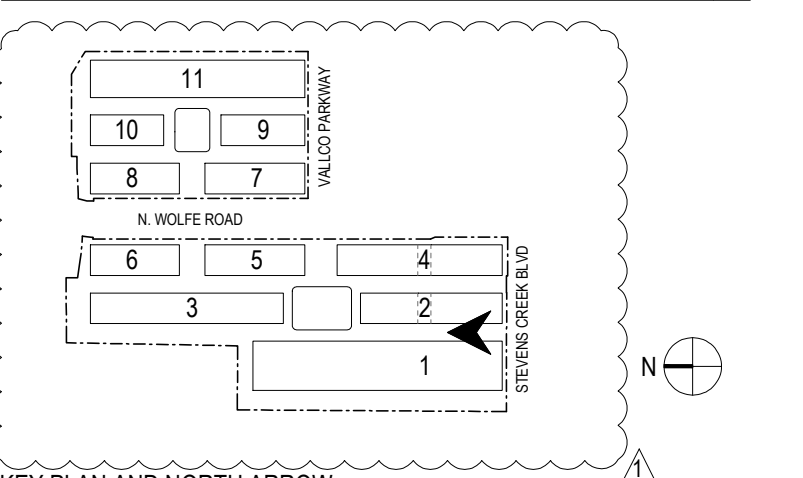
NOTES: LOCATION OF RETAIL AND ENTERTAINMENT VENUES ARE ILLUSTRATIVE AND MAY BE RELOCATED.

## NOT FOR CONSTRUCTION

DISCLAIMER  
THE ARCHITECT / ENGINEER SHALL HAVE NO RESPONSIBILITY FOR ANY LIABILITY, LOSS, COST, DAMAGE OR EXPENSE ARISING FROM OR RELATING TO ANY USE OF THIS DOCUMENT FOR ANY PURPOSE OTHER THAN ITS INTENDED PURPOSE ON THIS PROJECT. THIS DOCUMENT IS TO BE CONSIDERED IN CONJUNCTION WITH ALL RELATED DOCUMENTATION. ANY DISCREPANCIES IDENTIFIED IN THIS DOCUMENT MUST BE REPORTED IMMEDIATELY TO THE ARCHITECT BEFORE PROCEEDING. CONTRACTORS MUST VERIFY ALL DIMENSIONS PRIOR TO PROCEEDING WITH ANY WORK. ONLY FIGURED DIMENSIONS ARE TO BE USED FOR VERIFICATION.

## SB-35 DEVELOPMENT APPLICATION

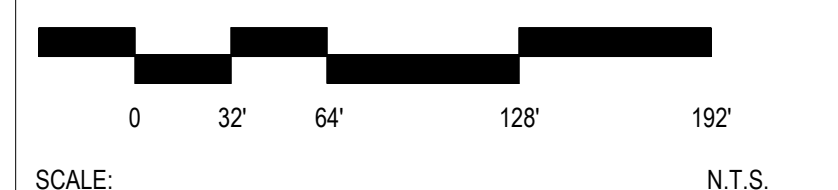
REV	DESCRIPTION	DATE
REV-0	SB-35 DEVELOPMENT APPLICATION	03/27/2018
REV-1	SB-35 APPLICATION REVISIONS	07/31/2018



ARCHITECTS PROJECT NUMBER: 708011

PROJECT PHASE: SB-35 DEVELOPMENT APPLICATION

IF THIS DRAWING IS NOT 36"X48" IT IS A REDUCED PRINT. REFER TO GRAPHIC SCALE.



VISUALIZATIONS - STREET B VIEW LOOKING NORTH

SHEET TITLE:

**P-0005**

SHEET NUMBER: © 2018 RAFAEL VINOLY ARCHITECTS P.C.

# VALLCO TOWN CENTER

OWNER - VALLCO PROPERTY OWNER LLC  
965 PAGE MILL ROAD, PALO ALTO, CA 94304  
T. 650-344-1500

ARCHITECTURE - RAFAEL VINOLY ARCHITECTS  
50 VANDAM STREET, NEW YORK, NY 10013  
T. 212-924-0500

ARCHITECTURE - RAFAEL VINOLY ARCHITECTS  
1033 N. WOLFE ROAD, CUPERTINO, CA 95014  
T. 408-627-7000

LANDSCAPE ARCHITECTURE - OLIN PARTNERSHIP LTD.  
150 S. INDEPENDENCE MALL IV, SUITE 1103, PHILADELPHIA, PA 19106  
T. 214-440-0030

CIVIL - SANDIS CIVIL ENGINEERS SURVEYORS PLANNERS, INC.  
1705 S. WINCHESTER BLVD, SUITE 200, CAMPBELL, CA 95008  
T. 408-636-0500

TRANSPORTATION ENGINEERING - ARUP NORTH AMERICA, LTD.  
880 MISSION STREET, SUITE 700, SAN FRANCISCO, CA 94105  
T. 415-567-9445

LIGHTING - ONE LUX STUDIO  
158 WEST 29TH STREET, 10TH FLOOR, NEW YORK, NY 10001  
T. 212-203-9750

SIGNAGE - EXIT  
1617 JPK BLVD, SUITE 1665, PHILADELPHIA, PA 19103  
T. 215-581-1950

PARKING ENGINEERING - WATRY DESIGN, INC.  
2096 GATEWAY PLACE, SUITE 550, SAN JOSE, CA 95110  
T. 408-392-7000

WASTE MANAGEMENT - CINLITTLE INTERNATIONAL  
535 NORTH BRAND BLVD, STE 710 GLENDALE, CA 92103  
T. 626-441-7700

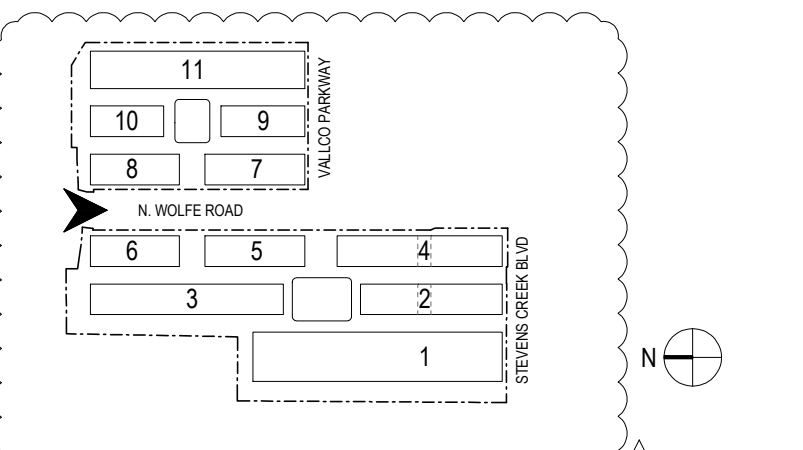


## NOT FOR CONSTRUCTION

DISCLAIMER  
THE ARCHITECT/ENGINEER SHALL HAVE NO RESPONSIBILITY FOR ANY LIABILITY, LOSS, COST, DAMAGE OR EXPENSE ARISING FROM OR RELATING TO ANY USE OF THIS DOCUMENT FOR ANY PURPOSE OTHER THAN ITS INTENDED PURPOSE ON THIS PROJECT. THIS DOCUMENT IS TO BE CONSIDERED IN CONJUNCTION WITH ALL RELATED DOCUMENTATION. ANY DISCREPANCIES IDENTIFIED IN THIS DOCUMENT MUST BE REPORTED IMMEDIATELY TO THE ARCHITECT BEFORE PROCEEDING. CONTRACTORS MUST VERIFY ALL DIMENSIONS PRIOR TO PROCEEDING WITH ANY WORK. ONLY FIGURED DIMENSIONS ARE TO BE USED FOR VERIFICATION.

## SB-35 DEVELOPMENT APPLICATION

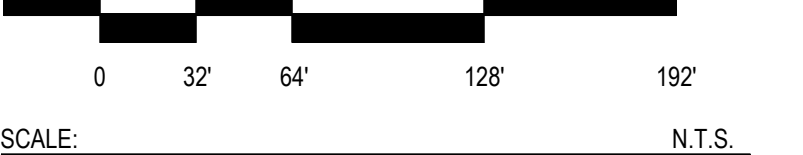
REV	DESCRIPTION	DATE
REV-0	SB-35 DEVELOPMENT APPLICATION	03/27/2018
REV-1	SB-35 APPLICATION REVISIONS	07/31/2018



ARCHITECTS PROJECT NUMBER: 708011

PROJECT PHASE: SB-35 DEVELOPMENT APPLICATION

IF THIS DRAWING IS NOT 36"x48" IT IS A REDUCED PRINT. REFER TO GRAPHIC SCALE.



## VISUALIZATIONS - WOLFE RD. LOOKING SOUTH

SHEET TITLE:

**P-0006**

SHEET NUMBER:

# VALLCO TOWN CENTER

OWNER - VALLCO PROPERTY OWNER LLC  
965 PAGE MILL ROAD, PALO ALTO, CA 94304  
T. 650-344-1500

ARCHITECTURE - RAFAEL VINOLY ARCHITECTS  
50 VANDAM STREET, NEW YORK, NY 10013  
T. 212-924-0500

ARCHITECTURE - RAFAEL VINOLY ARCHITECTS  
1033 N. WOLFE ROAD, CUPERTINO, CA 95014  
T. 408-627-7000

LANDSCAPE ARCHITECTURE - OLIN PARTNERSHIP LTD.  
100 S. INDEPENDENCE MALL, IV, SUITE 1100, PHILADELPHIA, PA 19106  
T. 215-480-0030

CIVIL - SANDIS CIVIL ENGINEERS SURVEYORS PLANNERS, INC.  
1700 S. WINCHESTER BLVD., SUITE 200, CAMPBELL, CA 95008  
T. 408-636-0900

TRANSPORTATION ENGINEERING - ARUP NORTH AMERICA, LTD.  
880 MISSION STREET, SUITE 700, SAN FRANCISCO, CA 94105  
T. 415-567-9445

LIGHTING - ONE LUX STUDIO  
158 WEST 29TH STREET, 10TH FLOOR, NEW YORK, NY 10001  
T. 212-205-6750

SIGNAGE - EXIT  
1617 JFK BLVD, SUITE 1666, PHILADELPHIA, PA 19103  
T. 215-581-1950

PARKING ENGINEERING - WATRY DESIGN, INC.  
2096 GATEWAY PLACE, SUITE 550, SAN JOSE, CA 95110  
T. 408-392-7900

WASTE MANAGEMENT - CINLITTLE INTERNATIONAL  
535 NORTH BRAND BLVD, STE 710 GLENDALE, CA 92103  
T. 626-441-7700

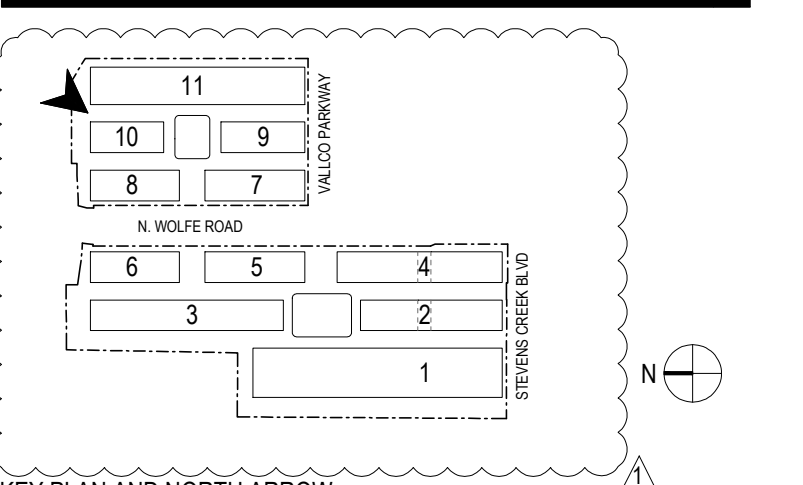


NOT FOR CONSTRUCTION

DISCLAIMER  
THE ARCHITECT/ENGINEER SHALL HAVE NO RESPONSIBILITY FOR ANY LIABILITY, LOSS, COST, DAMAGE OR EXPENSE ARISING FROM OR RELATING TO ANY USE OF THIS DOCUMENT FOR ANY PURPOSE OTHER THAN ITS INTENDED PURPOSE ON THIS PROJECT. THIS DOCUMENT IS TO BE CONSIDERED IN CONJUNCTION WITH ALL RELATED DOCUMENTATION. ANY DISCREPANCIES IDENTIFIED IN THIS DOCUMENT MUST BE REPORTED IMMEDIATELY TO THE ARCHITECT BEFORE PROCEEDING. CONTRACTORS MUST VERIFY ALL DIMENSIONS PRIOR TO PROCEEDING WITH ANY WORK. ONLY FIGURED DIMENSIONS ARE TO BE USED FOR VERIFICATION.

SB-35 DEVELOPMENT APPLICATION

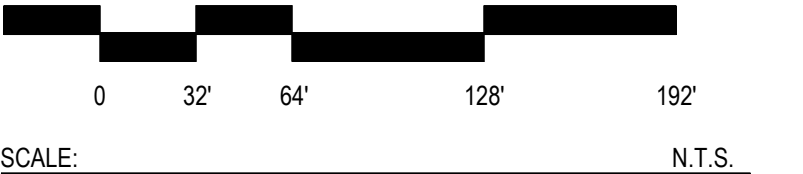
REV	DESCRIPTION	DATE
REV-0	SB-35 DEVELOPMENT APPLICATION	03/27/2018
REV-1	SB-35 APPLICATION REVISIONS	07/31/2018



ARCHITECTS PROJECT NUMBER 708911

PROJECT PHASE SB-35 DEVELOPMENT APPLICATION

IF THIS DRAWING IS NOT 36"x48" IT IS A REDUCED PRINT. REFER TO GRAPHIC SCALE.



SCALE N.T.S.

VISUALIZATIONS - GREEN ROOF VIEW

SHEET TITLE

P-0007

SHEET NUMBER

NOTES: LOCATION OF RETAIL AND ENTERTAINMENT VENUES ARE ILLUSTRATIVE AND MAY BE RELOCATED

# VALLCO TOWN CENTER

OWNER - VALLCO PROPERTY OWNER LLC  
965 PAGE MILL ROAD, PALO ALTO, CA 94304  
T. 650-344-1300

ARCHITECTURE - RAFAEL VINOLY ARCHITECTS  
50 VANDAM STREET, NEW YORK, NY 10013  
T. 212-924-0500

ARCHITECTURE - RAFAEL VINOLY ARCHITECTS  
1033 N. WOLFE ROAD, CUPERTINO, CA 95014  
T. 408-627-7000

LANDSCAPE ARCHITECTURE - OLIN PARTNERSHIP LTD.  
150 S. INDEPENDENCE MALL, V. SUITE 1123, PHILADELPHIA, PA 19106  
T. 214-440-0030

CIVIL - SANDIS CIVIL ENGINEERS SURVEYORS PLANNERS, INC.  
1705 S. WINCHESTER BLVD, SUITE 200, CAMPBELL, CA 95008  
T. 408-636-0900

TRANSPORTATION ENGINEERING - ARUP NORTH AMERICA, LTD.  
880 MISSION STREET, SUITE 700, SAN FRANCISCO, CA 94105  
T. 415-567-9445

LIGHTING - ONE LUX STUDIO  
158 WEST 29TH STREET, 10TH FLOOR, NEW YORK, NY 10001  
T. 212-201-9750

SIGNAGE - EXIT  
1617 JPK BLVD, SUITE 1666, PHILADELPHIA, PA 19103  
T. 215-561-1950

PARKING ENGINEERING - WATRY DESIGN, INC.  
2096 GATEWAY PLACE, SUITE 550, SAN JOSE, CA 95110  
T. 408-392-7900

WASTE MANAGEMENT - CINI LITTLE INTERNATIONAL  
535 NORTH BRAND BLVD, STE 710 GLENDALE, CA 92103  
T. 626-441-7700

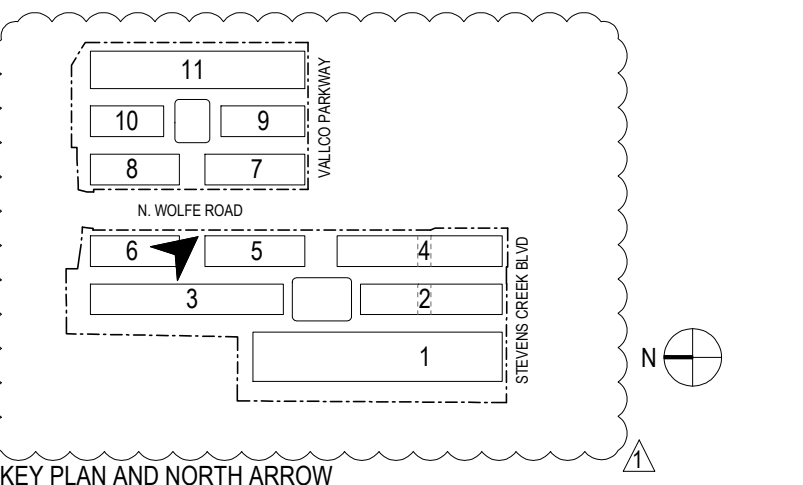


## NOT FOR CONSTRUCTION

DISCLAIMER  
THE ARCHITECT / ENGINEER SHALL HAVE NO RESPONSIBILITY FOR ANY LIABILITY, LOSS, COST, DAMAGE OR EXPENSE ARISING FROM OR RELATING TO ANY USE OF THIS DOCUMENT FOR ANY PURPOSE OTHER THAN ITS INTENDED PURPOSE ON THIS PROJECT. THIS DOCUMENT IS TO BE CONSIDERED IN CONJUNCTION WITH ALL RELATED DOCUMENTATION. ANY DISCREPANCIES IDENTIFIED IN THIS DOCUMENT MUST BE REPORTED IMMEDIATELY TO THE ARCHITECT BEFORE PROCEEDING. CONTRACTORS MUST VERIFY ALL DIMENSIONS PRIOR TO PROCEEDING WITH ANY WORK. ONLY FIGURED DIMENSIONS ARE TO BE USED FOR VERIFICATION.

## SB-35 DEVELOPMENT APPLICATION

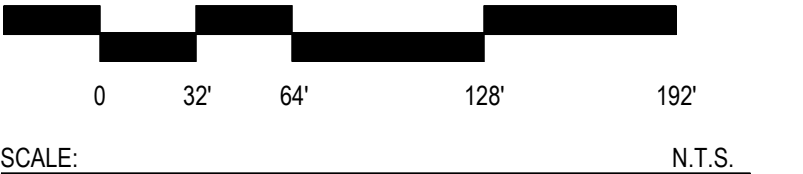
REV	DESCRIPTION	DATE
REV-0	SB-35 DEVELOPMENT APPLICATION	03/27/2018
REV-1	SB-35 APPLICATION REVISIONS	07/31/2018



ARCHITECTS PROJECT NUMBER: 708011

PROJECT PHASE: SB-35 DEVELOPMENT APPLICATION

IF THIS DRAWING IS NOT 36"X48" IT IS A REDUCED PRINT. REFER TO GRAPHIC SCALE.



## VISUALIZATIONS - GREEN ROOF BRIDGE VIEW

SHEET TITLE:

**P-0008**

SHEET NUMBER:



# VALLCO TOWN CENTER

OWNER - VALLCO PROPERTY OWNER LLC  
965 PAGE MILL ROAD, PALO ALTO, CA 94304  
T. 650-344-1300

ARCHITECTURE - RAFAEL VINOLY ARCHITECTS  
50 VANDAM STREET, NEW YORK, NY 10013  
T. 212-924-0500

ARCHITECTURE - RAFAEL VINOLY ARCHITECTS  
1033 N. WOLFE ROAD, CUPERTINO, CA 95014  
T. 408-627-7000

LANDSCAPE ARCHITECTURE - OLIN PARTNERSHIP LTD.  
192 S. INDEPENDENCE MALL, IV, SUITE 1120, PHILADELPHIA, PA 19106  
T. 215-440-0000

CIVIL - SANDIS CIVIL ENGINEERS SURVEYORS PLANNERS, INC.  
1700 S. WINCHESTER BLVD, SUITE 200, CAMPBELL, CA 95008  
T. 408-636-0900

TRANSPORTATION ENGINEERING - ARUP NORTH AMERICA, LTD.  
660 MISSION STREET, SUITE 700, SAN FRANCISCO, CA 94105  
T. 415-567-9445

LIGHTING - ONE LUX STUDIO  
158 WEST 29TH STREET, 10TH FLOOR, NEW YORK, NY 10001  
T. 212-201-6750

SIGNAGE - EXIT  
1617 JFK BLVD, SUITE 1666, PHILADELPHIA, PA 19103  
T. 215-661-1950

PARKING ENGINEERING - WATRY DESIGN, INC.  
2096 GATEWAY PLACE, SUITE 550, SAN JOSE, CA 95110  
T. 408-392-7900

WASTE MANAGEMENT - CINLITTLE INTERNATIONAL  
535 NORTH BRAND BLVD, STE 710 GLENDALE, CA 92103  
T. 626-441-7700

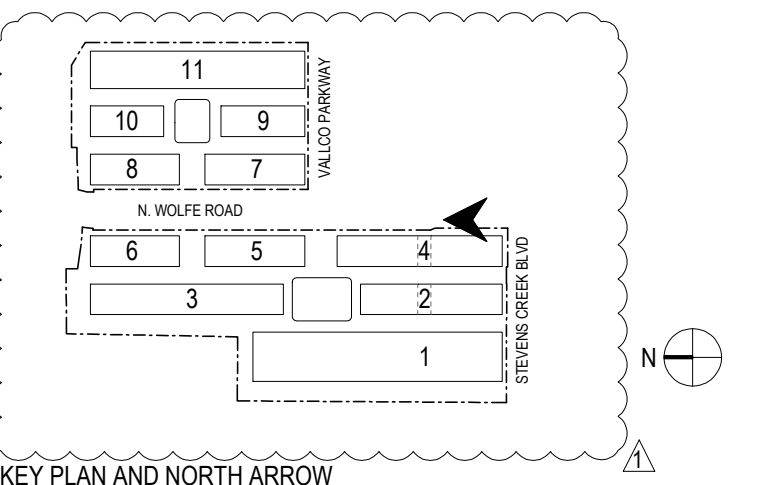


## NOT FOR CONSTRUCTION

DISCLAIMER  
THE ARCHITECT/ENGINEER SHALL HAVE NO RESPONSIBILITY FOR ANY LIABILITY, LOSS, COST, DAMAGE OR EXPENSE ARISING FROM OR RELATING TO ANY USE OF THIS DOCUMENT FOR ANY PURPOSE OTHER THAN ITS INTENDED PURPOSE ON THIS PROJECT. THIS DOCUMENT IS TO BE CONSIDERED IN CONJUNCTION WITH ALL RELATED DOCUMENTATION. ANY DISCREPANCIES IDENTIFIED IN THIS DOCUMENT MUST BE REPORTED IMMEDIATELY TO THE ARCHITECT BEFORE PROCEEDING. CONTRACTORS MUST VERIFY ALL DIMENSIONS PRIOR TO PROCEEDING WITH ANY WORK. ONLY FIGURED DIMENSIONS ARE TO BE USED FOR VERIFICATION.

## SB-35 DEVELOPMENT APPLICATION

REV	DESCRIPTION	DATE
REV-0	SB-35 DEVELOPMENT APPLICATION	03/27/2018
REV-1	SB-35 APPLICATION REVISIONS	07/31/2018



ARCHITECTS PROJECT NUMBER: 708911  
PROJECT PHASE: SB-35 DEVELOPMENT APPLICATION

IF THIS DRAWING IS NOT 36"x48" IT IS A REDUCED PRINT. REFER TO GRAPHIC SCALE.



VISUALIZATIONS - WOLFE RD. SIDEWALK LOOKING NORTH

SHEET TITLE:

**P-0009**

SHEET NUMBER:

(NOTES: LOCATION OF RETAIL AND ENTERTAINMENT VENUES ARE ILLUSTRATIVE AND MAY BE RELOCATED.)

# VALLCO TOWN CENTER

OWNER - VALLCO PROPERTY OWNER LLC  
965 PAGE MILL ROAD, PALO ALTO, CA 94304  
T. 650-344-1300

ARCHITECTURE - RAFAEL VINOLY ARCHITECTS  
50 VANDAM STREET, NEW YORK, NY 10013  
T. 212-924-0500

ARCHITECTURE - RAFAEL VINOLY ARCHITECTS  
1033 N. WOLFE ROAD, CUPERTINO, CA 95014  
T. 408-627-7000

LANDSCAPE ARCHITECTURE - OLIN PARTNERSHIP LTD.  
102 S. INDEPENDENCE MALL, W. SUITE 1120, PHILADELPHIA, PA 19106  
T. 215-440-0030

CIVIL - SANDIS CIVIL ENGINEERS SURVEYORS PLANNERS, INC.  
1700 S. WINCHESTER BLVD, SUITE 200, CAMPBELL, CA 95008  
T. 408-636-0900

TRANSPORTATION ENGINEERING - ARUP NORTH AMERICA, LTD.  
860 MISSION STREET, SUITE 700, SAN FRANCISCO, CA 94105  
T. 415-567-9445

LIGHTING - ONE LUX STUDIO  
158 WEST 29TH STREET, 10TH FLOOR, NEW YORK, NY 10001  
T. 212-205-6750

SIGNAGE - EXIT  
1617 JPK BLVD, SUITE 1665, PHILADELPHIA, PA 19103  
T. 215-661-1950

PARKING ENGINEERING - WATRY DESIGN, INC.  
2096 GATEWAY PLACE, SUITE 550, SAN JOSE, CA 95110  
T. 408-392-7900

WASTE MANAGEMENT - CINI LITTLE INTERNATIONAL  
535 NORTH BRAND BLVD, STE 710 GLENDALE, CA 92103  
T. 626-441-7700

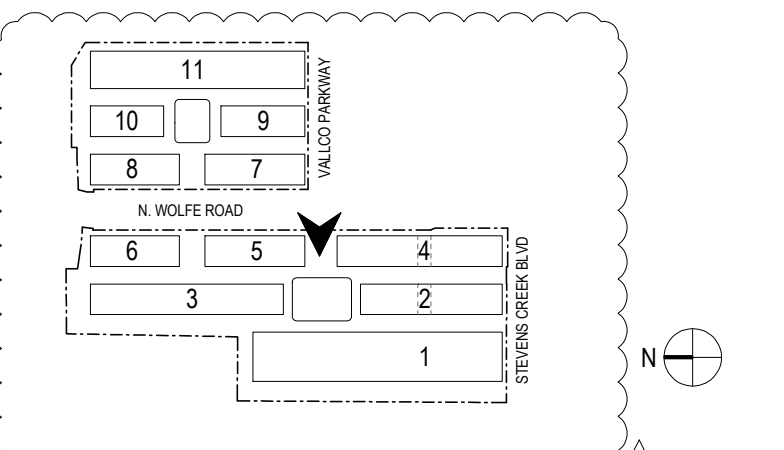


NOT FOR CONSTRUCTION

DISCLAIMER  
THE ARCHITECT/ENGINEER SHALL HAVE NO RESPONSIBILITY FOR ANY LIABILITY, LOSS, COST, DAMAGE OR EXPENSE ARISING FROM OR RELATING TO ANY USE OF THIS DOCUMENT FOR ANY PURPOSE OTHER THAN ITS INTENDED PURPOSE ON THIS PROJECT. THIS DOCUMENT IS TO BE CONSIDERED IN CONJUNCTION WITH ALL RELATED DOCUMENTATION. ANY DISCREPANCIES IDENTIFIED IN THIS DOCUMENT MUST BE REPORTED IMMEDIATELY TO THE ARCHITECT BEFORE PROCEEDING. CONTRACTORS MUST VERIFY ALL DIMENSIONS PRIOR TO PROCEEDING WITH ANY WORK. ONLY FIGURED DIMENSIONS ARE TO BE USED FOR VERIFICATION.

## SB-35 DEVELOPMENT APPLICATION

REV	DESCRIPTION	DATE
REV-0	SB-35 DEVELOPMENT APPLICATION	03/27/2018
REV-1	SB-35 APPLICATION REVISIONS	07/31/2018



ARCHITECTS PROJECT NUMBER: 708011

PROJECT PHASE: SB-35 DEVELOPMENT APPLICATION

IF THIS DRAWING IS NOT 36" x 48" IT IS A REDUCED PRINT. REFER TO GRAPHIC SCALE.



VISUALIZATIONS - VALLCO PARKWAY ENTRANCE TO PLAZA WEST

SHEET TITLE:

**P-0010**

SHEET NUMBER

# VALLCO TOWN CENTER

OWNER - VALLCO PROPERTY OWNER LLC  
965 PAGE MILL ROAD, PALO ALTO, CA 94304  
T. 650-344-1300

ARCHITECTURE - RAFAEL VINOLY ARCHITECTS  
50 VANDAM STREET, NEW YORK, NY 10013  
T. 212-924-0500

ARCHITECTURE - RAFAEL VINOLY ARCHITECTS  
1033 N. WOLFE ROAD, CUPERTINO, CA 95014  
T. 408-627-7000

LANDSCAPE ARCHITECTURE - OLIN PARTNERSHIP LTD.  
192 S. INDEPENDENCE MALL IV, SUITE 1103, PHILADELPHIA, PA 19106  
T. 215-440-0030

CIVIL - SANDIS CIVIL ENGINEERS SURVEYORS PLANNERS, INC.  
1700 S. WINCHESTER BLVD, SUITE 200, CAMPBELL, CA 95008  
T. 408-636-0900

TRANSPORTATION ENGINEERING - ARUP NORTH AMERICA, LTD.  
860 MISSION STREET, SUITE 700, SAN FRANCISCO, CA 94105  
T. 415-567-9445

LIGHTING - ONE LUX STUDIO  
158 WEST 29TH STREET, 10TH FLOOR, NEW YORK, NY 10001  
T. 212-201-6750

SIGNAGE - EXIT  
1617 JPK BLVD, SUITE 1665, PHILADELPHIA, PA 19103  
T. 215-661-1950

PARKING ENGINEERING - WATRY DESIGN, INC.  
2096 GATEWAY PLACE, SUITE 550, SAN JOSE, CA 95110  
T. 408-392-7900

WASTE MANAGEMENT - CINLITTLE INTERNATIONAL  
535 NORTH BRAND BLVD, STE 710 GLENDALE, CA 92103  
T. 626-441-7700

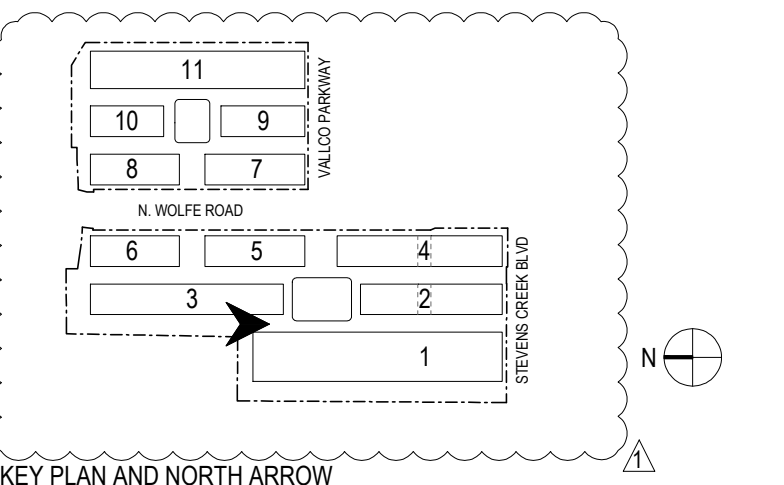


NOT FOR CONSTRUCTION

DISCLAIMER  
THE ARCHITECT/ENGINEER SHALL HAVE NO RESPONSIBILITY FOR ANY LIABILITY, LOSS, COST, DAMAGE OR EXPENSE ARISING FROM OR RELATING TO ANY USE OF THIS DOCUMENT FOR ANY PURPOSE OTHER THAN ITS INTENDED PURPOSE ON THIS PROJECT. THIS DOCUMENT IS TO BE CONSIDERED IN CONJUNCTION WITH ALL RELATED DOCUMENTATION. ANY DISCREPANCIES IDENTIFIED IN THIS DOCUMENT MUST BE REPORTED IMMEDIATELY TO THE ARCHITECT BEFORE PROCEEDING. CONTRACTORS MUST VERIFY ALL DIMENSIONS PRIOR TO PROCEEDING WITH ANY WORK. ONLY FIGURED DIMENSIONS ARE TO BE USED FOR VERIFICATION.

## SB-35 DEVELOPMENT APPLICATION

REV	DESCRIPTION	DATE
REV-0	SB-35 DEVELOPMENT APPLICATION	03/27/2018
REV-1	SB-35 APPLICATION REVISIONS	07/31/2018



ARCHITECTS PROJECT NUMBER: 708011

PROJECT PHASE: SB-35 DEVELOPMENT APPLICATION

IF THIS DRAWING IS NOT 36"X48" IT IS A REDUCED PRINT. REFER TO GRAPHIC SCALE.



## VISUALIZATIONS - STREET B VIEW LOOKING SOUTH

SHEET TITLE:

**P-0011**

SHEET NUMBER: © 2018 RAFAEL VINOLY ARCHITECTS PCL

NOTES: LOCATION OF RETAIL AND ENTERTAINMENT VENUES ARE ILLUSTRATIVE AND MAY BE RELOCATED.

# VALLCO TOWN CENTER

OWNER - VALLCO PROPERTY OWNER LLC  
965 PAGE MILL ROAD, PALO ALTO, CA 94304  
T. 650-344-1300

ARCHITECTURE - RAFAEL VINOLY ARCHITECTS  
50 VANDAM STREET, NEW YORK, NY 10013  
T. 212-924-0500

ARCHITECTURE - RAFAEL VINOLY ARCHITECTS  
1033 N. WOLFE ROAD, CUPERTINO, CA 95014  
T. 408-627-7000

LANDSCAPE ARCHITECTURE - OLIN PARTNERSHIP LTD.  
150 S. INDEPENDENCE MALL, V. SUITE 1103, PHILADELPHIA, PA 19106  
T. 215-440-0030

CIVIL - SANDIS CIVIL ENGINEERS SURVEYORS PLANNERS, INC.  
1705 S. WINCHESTER BLVD, SUITE 200, CAMPBELL, CA 95008  
T. 408-636-0900

TRANSPORTATION ENGINEERING - ARUP NORTH AMERICA, LTD.  
880 MISSION STREET, SUITE 700, SAN FRANCISCO, CA 94105  
T. 415-567-9445

LIGHTING - ONE LUX STUDIO  
158 WEST 29TH STREET, 10TH FLOOR, NEW YORK, NY 10001  
T. 212-201-9750

SIGNAGE - EXIT  
1617 JPK BLVD, SUITE 1666, PHILADELPHIA, PA 19103  
T. 215-581-1950

PARKING ENGINEERING - WATRY DESIGN, INC.  
2096 GATEWAY PLACE, SUITE 550, SAN JOSE, CA 95110  
T. 408-392-7900

WASTE MANAGEMENT - CIN LITTLE INTERNATIONAL  
535 NORTH BRAND BLVD, STE 710 GLENDALE, CA 92103  
T. 626-441-7700

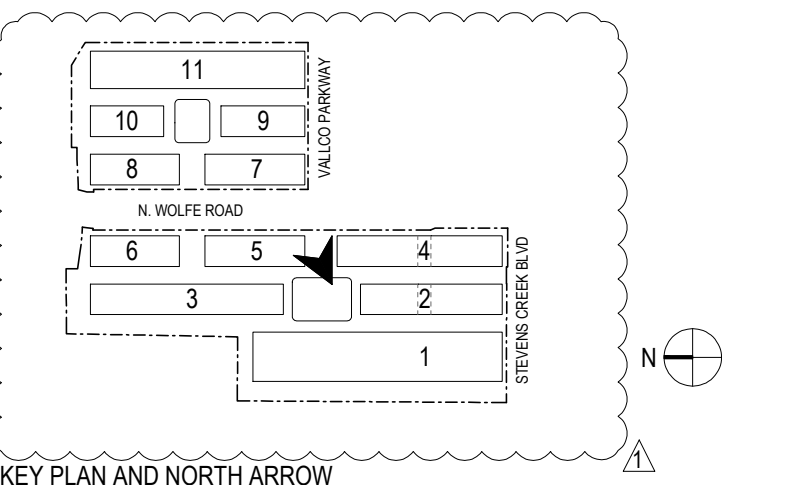


NOT FOR CONSTRUCTION

DISCLAIMER  
THE ARCHITECT/ENGINEER SHALL HAVE NO RESPONSIBILITY FOR ANY LIABILITY, LOSS, COST, DAMAGE OR EXPENSE ARISING FROM OR RELATING TO ANY USE OF THIS DOCUMENT FOR ANY PURPOSE OTHER THAN ITS INTENDED PURPOSE ON THIS PROJECT. THIS DOCUMENT IS TO BE CONSIDERED IN CONJUNCTION WITH ALL RELATED DOCUMENTATION. ANY DISCREPANCIES IDENTIFIED IN THIS DOCUMENT MUST BE REPORTED IMMEDIATELY TO THE ARCHITECT BEFORE PROCEEDING. CONTRACTORS MUST VERIFY ALL DIMENSIONS PRIOR TO PROCEEDING WITH ANY WORK. ONLY FIGURED DIMENSIONS ARE TO BE USED FOR VERIFICATION.

SB-35 DEVELOPMENT APPLICATION

REV	DESCRIPTION	DATE
REV-0	SB-35 DEVELOPMENT APPLICATION	03/27/2018
REV-1	SB-35 APPLICATION REVISIONS	07/31/2018



NOTES: LOCATION OF RETAIL AND ENTERTAINMENT VENUES ARE ILLUSTRATIVE AND MAY BE RELOCATED.

ARCHITECTS PROJECT NUMBER: 708011

PROJECT PHASE: SB-35 DEVELOPMENT APPLICATION

IF THIS DRAWING IS NOT 36"x48" IT IS A REDUCED PRINT. REFER TO GRAPHIC SCALE.



VISUALIZATIONS - STREET 2 AND PLAZA WEST VIEW  
LOOKING WEST

SHEET TITLE:

P-0012

SHEET NUMBER:

# VALLCO TOWN CENTER

OWNER - VALLCO PROPERTY OWNER LLC  
965 PAGE MILL ROAD, PALO ALTO, CA 94304  
T. 650-344-1300

ARCHITECTURE - RAFAEL VINOLY ARCHITECTS  
50 VANDAM STREET, NEW YORK, NY 10013  
T. 212-924-0500

ARCHITECTURE - RAFAEL VINOLY ARCHITECTS  
1033 N. WOLFE ROAD, CUPERTINO, CA 95014  
T. 408-627-7000

LANDSCAPE ARCHITECTURE - OLIN PARTNERSHIP LTD.  
192 S. INDEPENDENCE MALL, V. SUITE 1123, PHILADELPHIA, PA 19106  
T. 215-440-0030

CIVIL - SANDIS CIVIL ENGINEERS SURVEYORS PLANNERS, INC.  
1705 S. WINCHESTER BLVD, SUITE 200, CAMPBELL, CA 95008  
T. 408-636-0900

TRANSPORTATION ENGINEERING - ARUP NORTH AMERICA, LTD.  
880 MISSION STREET, SUITE 700, SAN FRANCISCO, CA 94105  
T. 415-567-9445

LIGHTING - ONE LUX STUDIO  
158 WEST 29TH STREET, 10TH FLOOR, NEW YORK, NY 10001  
T. 212-201-9750

SIGNAGE - EXIT  
1617 JPK BLVD, SUITE 1665, PHILADELPHIA, PA 19103  
T. 215-641-1950

PARKING ENGINEERING - WATRY DESIGN, INC.  
2096 GATEWAY PLACE, SUITE 550, SAN JOSE, CA 95110  
T. 408-392-7900

WASTE MANAGEMENT - CINLITTLE INTERNATIONAL  
535 NORTH BRAND BLVD, STE 710 GLENDALE, CA 92103  
T. 626-441-7700

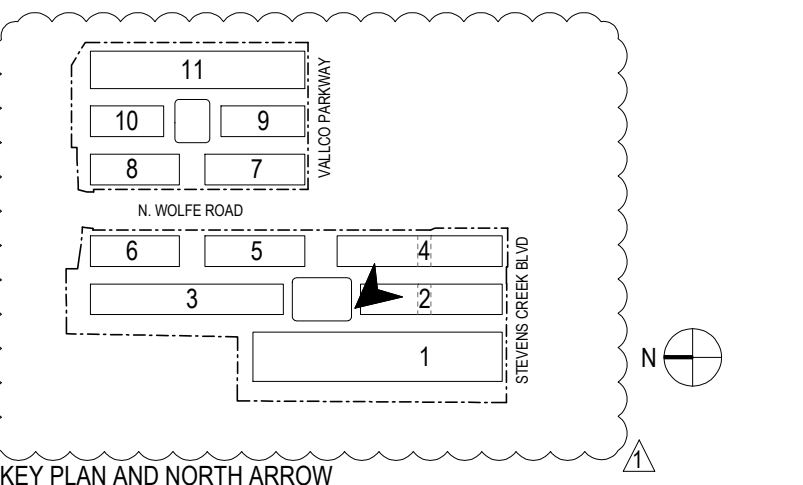


NOT FOR CONSTRUCTION

DISCLAIMER  
THE ARCHITECT/ENGINEER SHALL HAVE NO RESPONSIBILITY FOR ANY LIABILITY, LOSS, COST, DAMAGE OR EXPENSE ARISING FROM OR RELATING TO ANY USE OF THIS DOCUMENT FOR ANY PURPOSE OTHER THAN ITS INTENDED PURPOSE ON THIS PROJECT. THIS DOCUMENT IS TO BE CONSIDERED IN CONJUNCTION WITH ALL RELATED DOCUMENTATION. ANY DISCREPANCIES IDENTIFIED IN THIS DOCUMENT MUST BE REPORTED IMMEDIATELY TO THE ARCHITECT BEFORE PROCEEDING. CONTRACTORS MUST VERIFY ALL DIMENSIONS PRIOR TO PROCEEDING WITH ANY WORK. ONLY FIGURED DIMENSIONS ARE TO BE USED FOR VERIFICATION.

SB-35 DEVELOPMENT APPLICATION

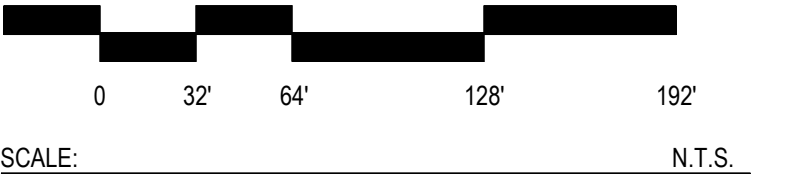
REV	DESCRIPTION	DATE
REV-0	SB-35 DEVELOPMENT APPLICATION	03/27/2018
REV-1	SB-35 APPLICATION REVISIONS	07/31/2018



ARCHITECTS PROJECT NUMBER: 708011

PROJECT PHASE: SB-35 DEVELOPMENT APPLICATION

IF THIS DRAWING IS NOT 36"x48" IT IS A REDUCED PRINT. REFER TO GRAPHIC SCALE.



VISUALIZATIONS - STREET 2 AND PLAZA WEST VIEW LOOKING NORTH

SHEET TITLE:

P-0013

SHEET NUMBER:

NOTES: LOCATION OF RETAIL AND ENTERTAINMENT VENUES ARE ILLUSTRATIVE AND MAY BE RELOCATED.

# VALLCO TOWN CENTER

OWNER - VALLCO PROPERTY OWNER LLC  
965 PAGE MILL ROAD, PALO ALTO, CA 94304  
T. 650-344-1300

ARCHITECTURE - RAFAEL VINOLY ARCHITECTS  
50 VANDAM STREET, NEW YORK, NY 10013  
T. 212-924-0500

ARCHITECTURE - RAFAEL VINOLY ARCHITECTS  
1033 N. WOLFE ROAD, CUPERTINO, CA 95014  
T. 408-627-7000

LANDSCAPE ARCHITECTURE - OLIN PARTNERSHIP LTD.  
102 S. INDEPENDENCE MALL IV, SUITE 1120, PHILADELPHIA, PA 19106  
T. 215-440-0030

CIVIL - SANDIS CIVIL ENGINEERS SURVEYORS PLANNERS, INC.  
1700 S. WINCHESTER BLVD, SUITE 200, CAMPBELL, CA 95008  
T. 408-636-0900

TRANSPORTATION ENGINEERING - ARUP NORTH AMERICA, LTD.  
860 MISSION STREET, SUITE 700, SAN FRANCISCO, CA 94105  
T. 415-567-9445

LIGHTING - ONE LUX STUDIO  
158 WEST 29TH STREET, 10TH FLOOR, NEW YORK, NY 10001  
T. 212-205-6750

SIGNAGE - EXIT  
1617 JFK BLVD, SUITE 1665, PHILADELPHIA, PA 19103  
T. 215-661-1950

PARKING ENGINEERING - WATRY DESIGN, INC.  
2090 GATEWAY PLACE, SUITE 550, SAN JOSE, CA 95110  
T. 408-392-7900

WASTE MANAGEMENT - CINLITTLE INTERNATIONAL  
535 NORTH BRAND BLVD, STE 710 GLENDALE, CA 92103  
T. 626-441-7700

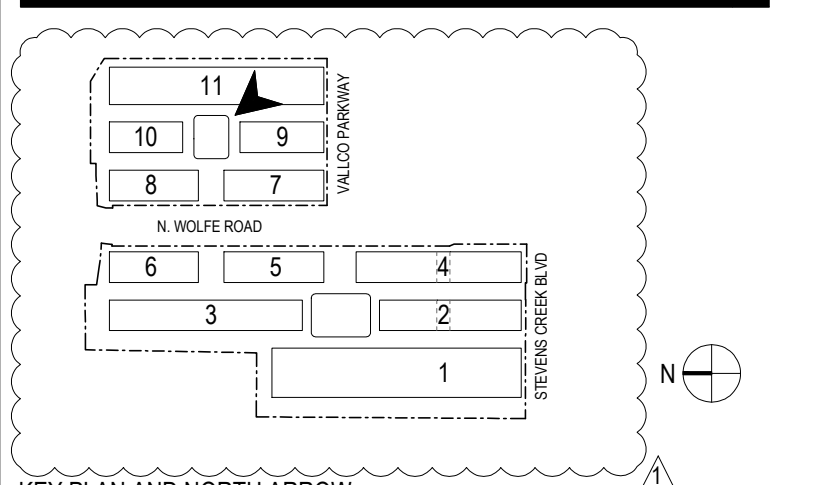


NOT FOR CONSTRUCTION

DISCLAIMER  
THE ARCHITECT/ENGINEER SHALL HAVE NO RESPONSIBILITY FOR ANY LIABILITY, LOSS, COST, DAMAGE OR EXPENSE ARISING FROM OR RELATING TO ANY USE OF THIS DOCUMENT FOR ANY PURPOSE OTHER THAN ITS INTENDED PURPOSE ON THIS PROJECT. THIS DOCUMENT IS TO BE CONSIDERED IN CONJUNCTION WITH ALL RELATED DOCUMENTATION. ANY DISCREPANCIES IDENTIFIED IN THIS DOCUMENT MUST BE REPORTED IMMEDIATELY TO THE ARCHITECT BEFORE PROCEEDING. CONTRACTORS MUST VERIFY ALL DIMENSIONS PRIOR TO PROCEEDING WITH ANY WORK. ONLY FIGURED DIMENSIONS ARE TO BE USED FOR VERIFICATION.

SB-35 DEVELOPMENT APPLICATION

REV	DESCRIPTION	DATE
REV-0	SB-35 DEVELOPMENT APPLICATION	03/27/2018
REV-1	SB-35 APPLICATION REVISIONS	07/31/2018



ARCHITECTS PROJECT NUMBER: 708011

PROJECT PHASE: SB-35 DEVELOPMENT APPLICATION

IF THIS DRAWING IS NOT 36"x48" IT IS A REDUCED PRINT. REFER TO GRAPHIC SCALE.



VISUALIZATIONS - STREET E VIEW LOOKING NORTH

SHEET TITLE:

**P-0014**

SHEET NUMBER

© 2018 RAFAEL VINOLY ARCHITECTS PC

NOTES: LOCATION OF RETAIL AND ENTERTAINMENT VENUES ARE ILLUSTRATIVE AND MAY BE RELOCATED

# VALLCO TOWN CENTER



OWNER - VALLCO PROPERTY OWNER LLC  
 965 PAGE MILL ROAD, PALO ALTO, CA 94304  
 T. 650-344-1500

ARCHITECTURE - RAFAEL VINOLY ARCHITECTS  
 50 VANDAM STREET, NEW YORK, NY 10013  
 T. 212-924-0500

ARCHITECTURE - RAFAEL VINOLY ARCHITECTS  
 1033 N. WOLFE ROAD, CUPERTINO, CA 95014  
 T. 408-627-7000

LANDSCAPE ARCHITECTURE - OLIN PARTNERSHIP LTD.  
 192 S. INDEPENDENCE MALL, W. SUITE 1120, PHILADELPHIA, PA 19106  
 T. 215-440-0030

CIVIL - SANDIS CIVIL ENGINEERS SURVEYORS PLANNERS, INC.  
 1700 S. WINCHESTER BLVD, SUITE 200, CAMPBELL, CA 95008  
 T. 408-636-0500

TRANSPORTATION ENGINEERING - ARUP NORTH AMERICA, LTD.  
 660 MISSION STREET, SUITE 700, SAN FRANCISCO, CA 94105  
 T. 415-567-9445

LIGHTING - ONE LUX STUDIO  
 158 WEST 29TH STREET, 10TH FLOOR, NEW YORK, NY 10001  
 T. 212-201-9250

SIGNAGE - EXIT  
 1617 JPK BLVD, SUITE 1666, PHILADELPHIA, PA 19103  
 T. 215-661-1950

PARKING ENGINEERING - WATRY DESIGN, INC.  
 2099 GATEWAY PLACE, SUITE 550, SAN JOSE, CA 95110  
 T. 408-392-7900

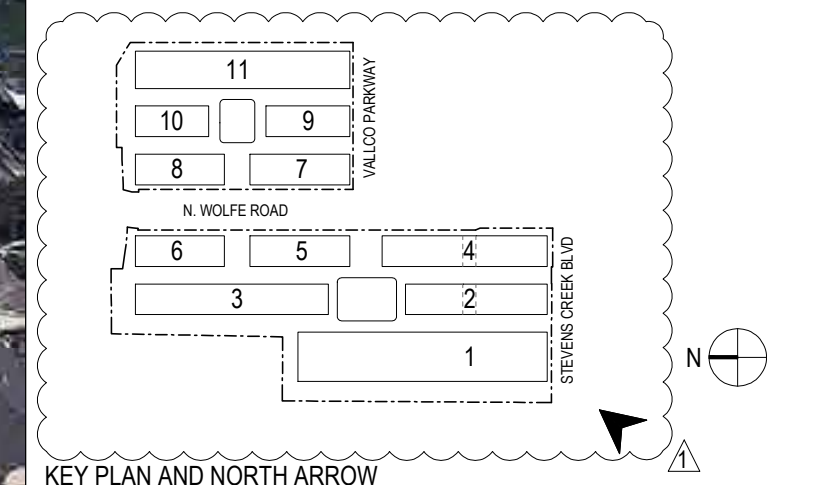
WASTE MANAGEMENT - CINLITTLE INTERNATIONAL  
 535 NORTH BRAND BLVD, STE 710 GLENDALE, CA 92103  
 T. 626-441-7700

**NOT FOR CONSTRUCTION**

**DISCLAIMER**  
 THE ARCHITECT / ENGINEER SHALL HAVE NO RESPONSIBILITY FOR ANY LIABILITY, LOSS, COST, DAMAGE OR EXPENSE ARISING FROM OR RELATING TO ANY USE OF THIS DOCUMENT FOR ANY PURPOSE OTHER THAN ITS INTENDED PURPOSE ON THIS PROJECT. THIS DOCUMENT IS TO BE CONSIDERED IN CONJUNCTION WITH ALL RELATED DOCUMENTATION. ANY DISCREPANCIES IDENTIFIED IN THIS DOCUMENT MUST BE REPORTED IMMEDIATELY TO THE ARCHITECT BEFORE PROCEEDING. CONTRACTORS MUST VERIFY ALL DIMENSIONS PRIOR TO PROCEEDING WITH ANY WORK. ONLY FIGURED DIMENSIONS ARE TO BE USED FOR VERIFICATION.

**SB-35 DEVELOPMENT APPLICATION**

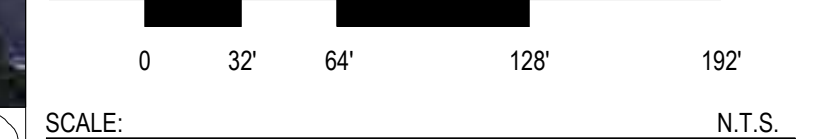
REV	DESCRIPTION	DATE
REV-0	SB-35 DEVELOPMENT APPLICATION	03/27/2018
REV-1	SB-35 APPLICATION REVISIONS	07/31/2018



ARCHITECTS PROJECT NUMBER: 708011

PROJECT PHASE: SB-35 DEVELOPMENT APPLICATION

IF THIS DRAWING IS NOT 36"x48" IT IS A REDUCED PRINT. REFER TO GRAPHIC SCALE.



**VISUALIZATIONS - AERIAL VIEW**

SHEET TITLE:  
**P-0015**  
 SHEET NUMBER

NOTES: LOCATION OF RETAIL AND ENTERTAINMENT VENUES ARE ILLUSTRATIVE AND MAY BE RELOCATED