



NOTE: REFER TO LANDSCAPE ARCHITECTURE DRAWINGS FOR PLANTING AND HARDSCAPE INFORMATION



HYATT HOUSE HOTEL AT VALLCO PARK

WOLFE ROAD & INTERSTATE 280
CUPERTINO, CALIFORNIA

PROJECT VIEW OPTIONAL ENTRY TOWER STONE FINISH AERIAL VIEW NORTHEAST

DATE: 10/3/2014
JOB NO.: 1345P



**GENE FONG
ASSOCIATES**
ARCHITECTURE · PLANNING · INTERIORS
1130 WESTWOOD BLVD, CA 90024
310-209-7520 310-209-7516 FAX

A-4.0a



NOTE: REFER TO LANDSCAPE ARCHITECTURE DRAWINGS FOR PLANTING AND HARDSCAPE INFORMATION



HYATT HOUSE HOTEL AT VALLCO PARK

WOLFE ROAD & INTERSTATE 280
CUPERTINO, CALIFORNIA

PROJECT VIEW
VIEW FROM ENTRY DRIVE

DATE: 10/3/2014
JOB NO.: 1345P



GENE FONG
ASSOCIATES
ARCHITECTURE · PLANNING · INTERIORS
1130 WESTWOOD BLVD., CA 90024
310-209-7520 310-209-7516 FAX

A-4.1



NOTE: REFER TO LANDSCAPE ARCHITECTURE DRAWINGS FOR PLANTING AND HARDSCAPE INFORMATION



HYATT HOUSE HOTEL AT VALLCO PARK

WOLFE ROAD & INTERSTATE 280
CUPERTINO, CALIFORNIA

PROJECT VIEW OPTIONAL ENTRY TOWER STONE FINISH VIEW FROM ENTRY DRIVE

DATE: 10/3/2014
JOB NO.: 1345P



**GENE FONG
ASSOCIATES**
ARCHITECTURE · PLANNING · INTERIORS
1130 WESTWOOD BLVD., CA 90024
310-209-7520 310-209-7516 FAX

A-4.1a



NOTE: REFER TO LANDSCAPE ARCHITECTURE DRAWINGS FOR PLANTING AND HARDSCAPE DESIGN

VIEW SOUTH



NOTE: REFER TO LANDSCAPE ARCHITECTURE DRAWINGS FOR PLANTING AND HARDSCAPE DESIGN

AERIAL VIEW EAST



NOTE: REFER TO LANDSCAPE ARCHITECTURE DRAWINGS FOR PLANTING AND HARDSCAPE DESIGN

MAIN ENTRY / DROP-OFF



NOTE: REFER TO LANDSCAPE ARCHITECTURE DRAWINGS FOR PLANTING AND HARDSCAPE DESIGN

VIEW SOUTH (FROM FREEWAY)

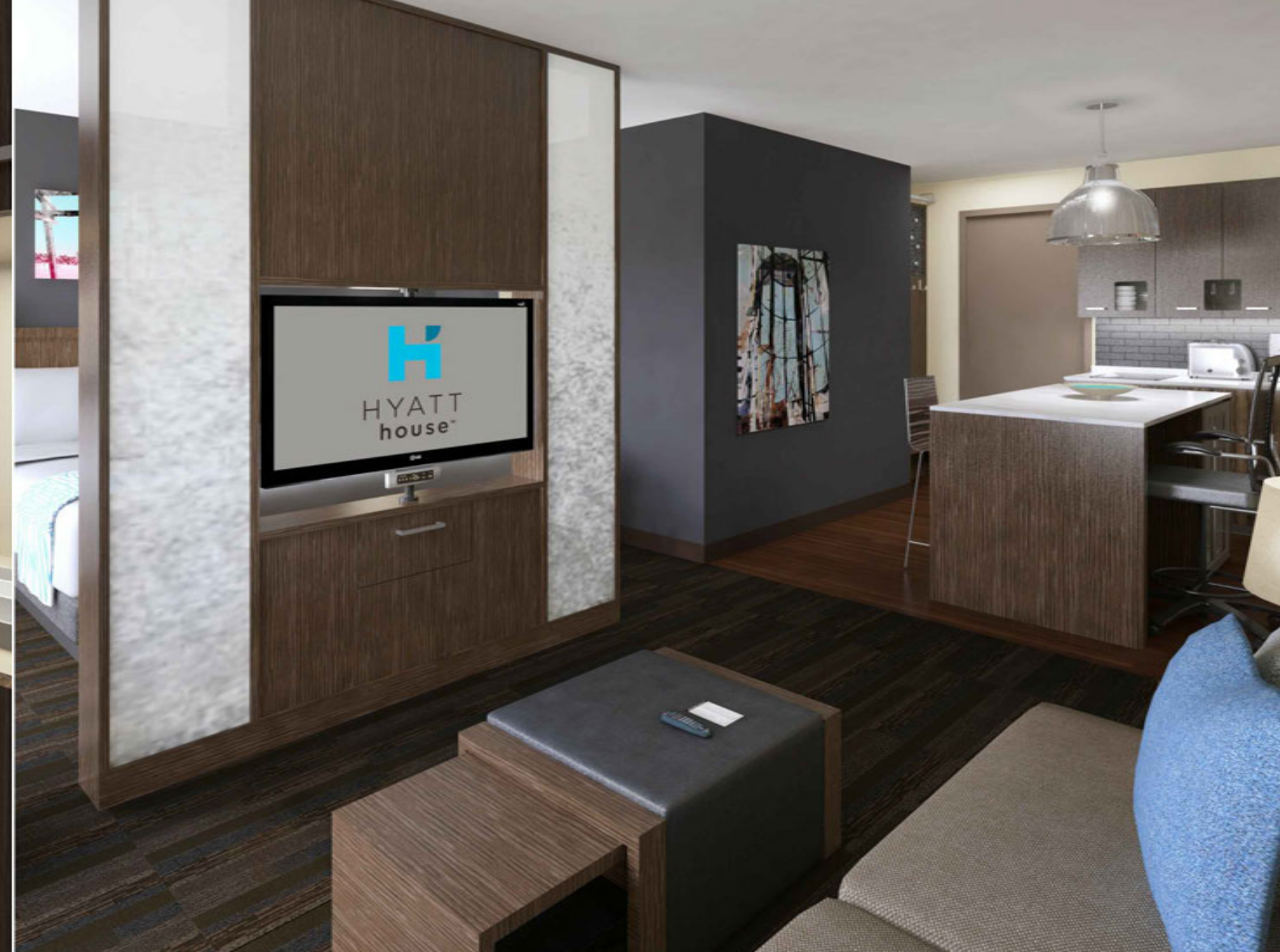


One Bedroom Kitchen Suite

Den Guestroom

Studio Kitchen Suite

Social Sectional



Outdoor Lounge

H BAR

Lounge

The House Host and Market





S-1 EXTERIOR CEMENT PLASTER
SMOOTH FINISH
INTEGRAL COLOR TO MATCH:
DUNN EDWARDS DE-5497
(TAPERING LIGHT)



S-2 EXTERIOR CEMENT PLASTER
SMOOTH FINISH
INTEGRAL COLOR TO MATCH:
DUNN EDWARDS DE-5493
(FLOATING LILY PAD)



S-3 EXTERIOR CEMENT PLASTER
SMOOTH FINISH
INTEGRAL COLOR TO MATCH:
DUNN EDWARDS DE-718
(MESA TAN)



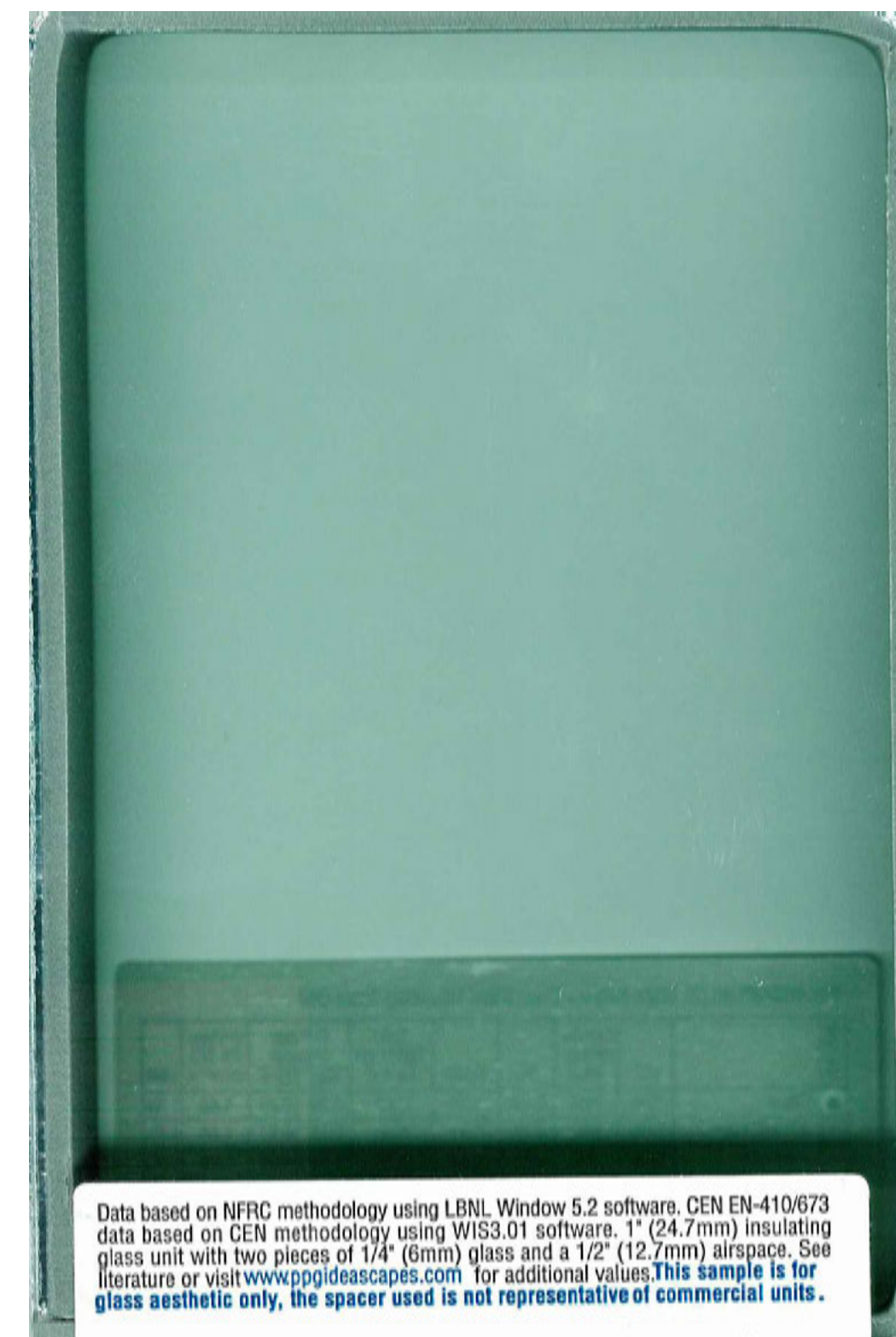
ST-1 MANUFACTURED STONE TILE SYSTEM
"FRENCH LIMESTONE - COUNTRY BEIGE"

ST-2 MANUFACTURED STONE, WAINSCOT / SILL CAP
CHISELED, BROWNSTONE

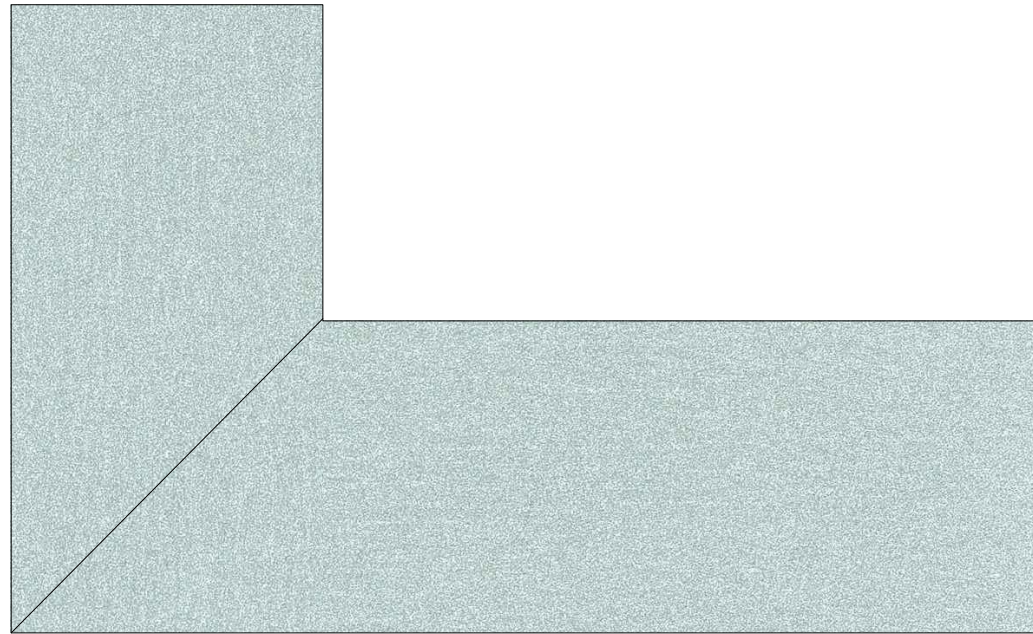
PRELIMINARY EXTERIOR FINISH SCHEDULE					
NO.	MATERIAL	FINISH	COLOR	GRAPHIC	MANUFACTURER/REMARKS
(S-1)	EXT. CEMENT PLASTER	SMOOTH, INTEGRAL COLOR	"TAPERING LIGHT"		COLOR TO MATCH DUNN EDWARDS DE-5497
(S-2)	EXT. CEMENT PLASTER	SMOOTH, INTEGRAL COLOR	"FLOATING LILY PAD"		COLOR TO MATCH DUNN EDWARDS DE-5493
(S-3)	EXT. CEMENT PLASTER	SMOOTH, INTEGRAL COLOR	"MESA TAN"		COLOR TO MATCH DUNN EDWARDS DE-714
(F-1)	EXT. FIBER CEMENT PANEL SYSTEM	SMOOTH PANEL W/EXPOSED FASTENERS	"COOL WATER"		COLOR TO MATCH DUNN EDWARDS DE-6316
(ST-1)	MANUFACTURED STONE CLADDING SYSTEM	"FRENCH LIMESTONE"	"COUNTRY BEIGE"		CORONADO STONE OR SIMILAR
(ST-2)	MANUFACTURED STONE, WAINSCOT / SILL CAP	CHISELED	BROWNSTONE		CORONADO STONE OR SIMILAR
(M-1)	METAL PANEL SYSTEM, WINDOW FRAME (STOREFRONT)	FACTORY FINISH	"SILVER-STORM"		--
(M-2)	METAL PANEL SYSTEM	FACTORY FINISH	"MEDIUM GRAY"		--
(M-3)	WINDOW FRAME (NAILFIN)	FACTORY FINISH	"SILVER-STORM"		--
(M-4)	METAL GRILL	FACTORY FINISH	"SILVER-STORM"		--
(G-1)	CLEAR GLAZING	FACTORY FINISH	CLEAR		--
(G-2)	SPANDREL GLAZING	FACTORY FINISH	60% OPACITY		--
(L-1)	GREENWALL LANDSCAPE SYSTEM	FACTORY FINISH	--		--



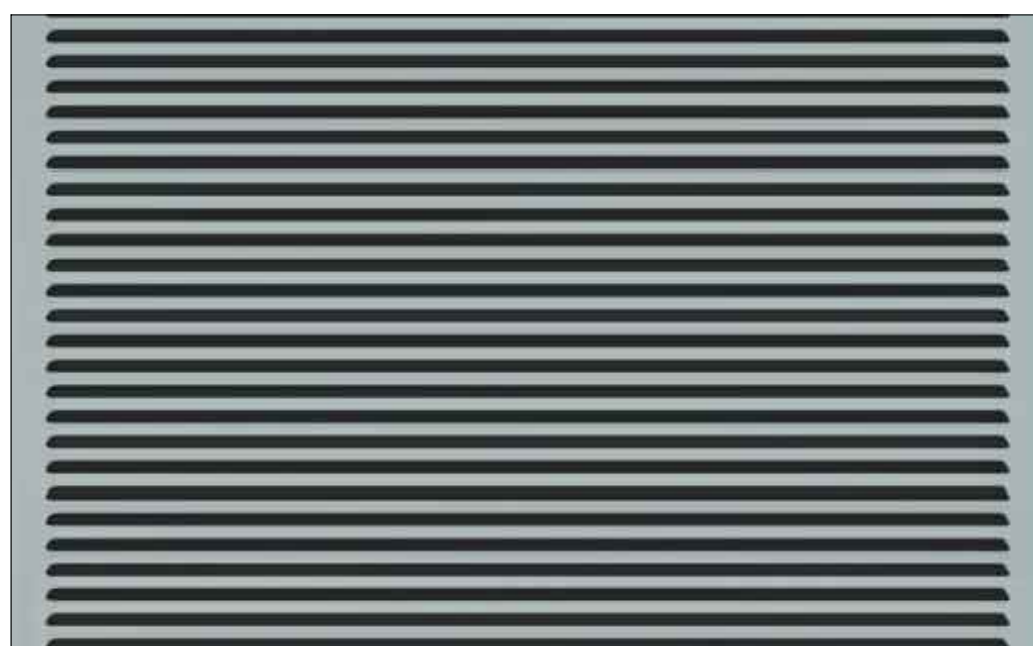
G-1 "LOW E" CLEAR GLAZING
PPG SOLARBAN 60 OR GREATER



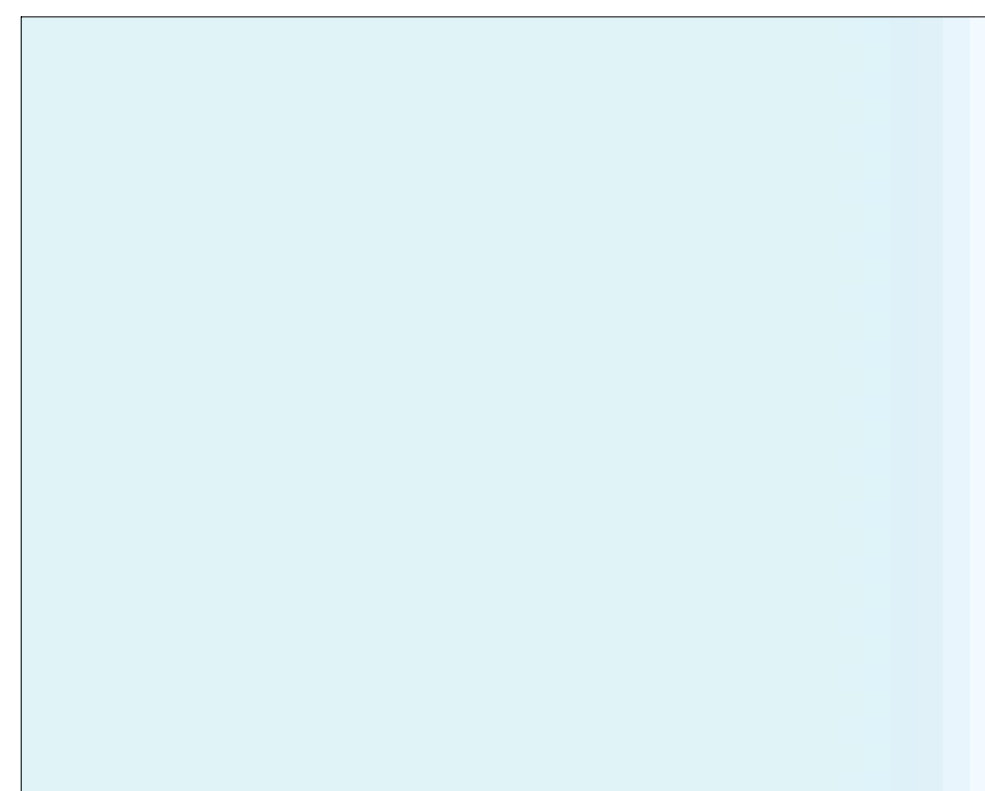
G-2 "LOW E" SPANDREL GLAZING
PPG SOLARBAN 60 OR GREATER



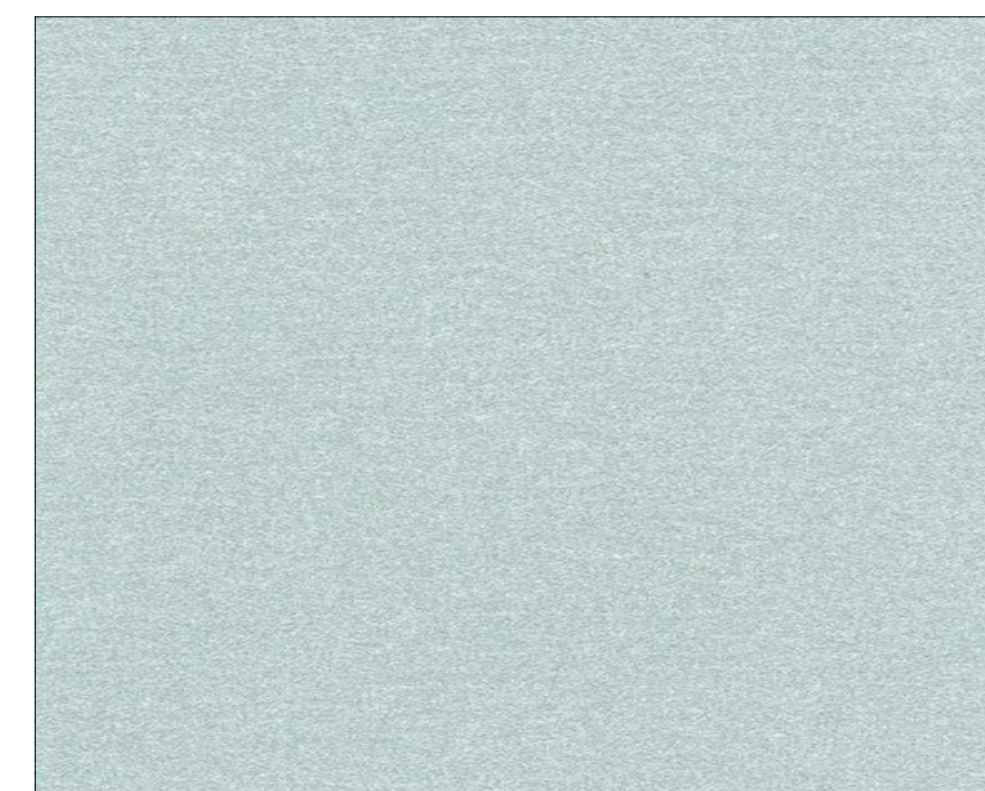
M-3 ALUMINUM STOREFRONT SYSTEM
BRIGHT SILVER METALLIC COATING



M-4 ARCHITECTURAL GRILLE
BRIGHT SILVER METALLIC COATING



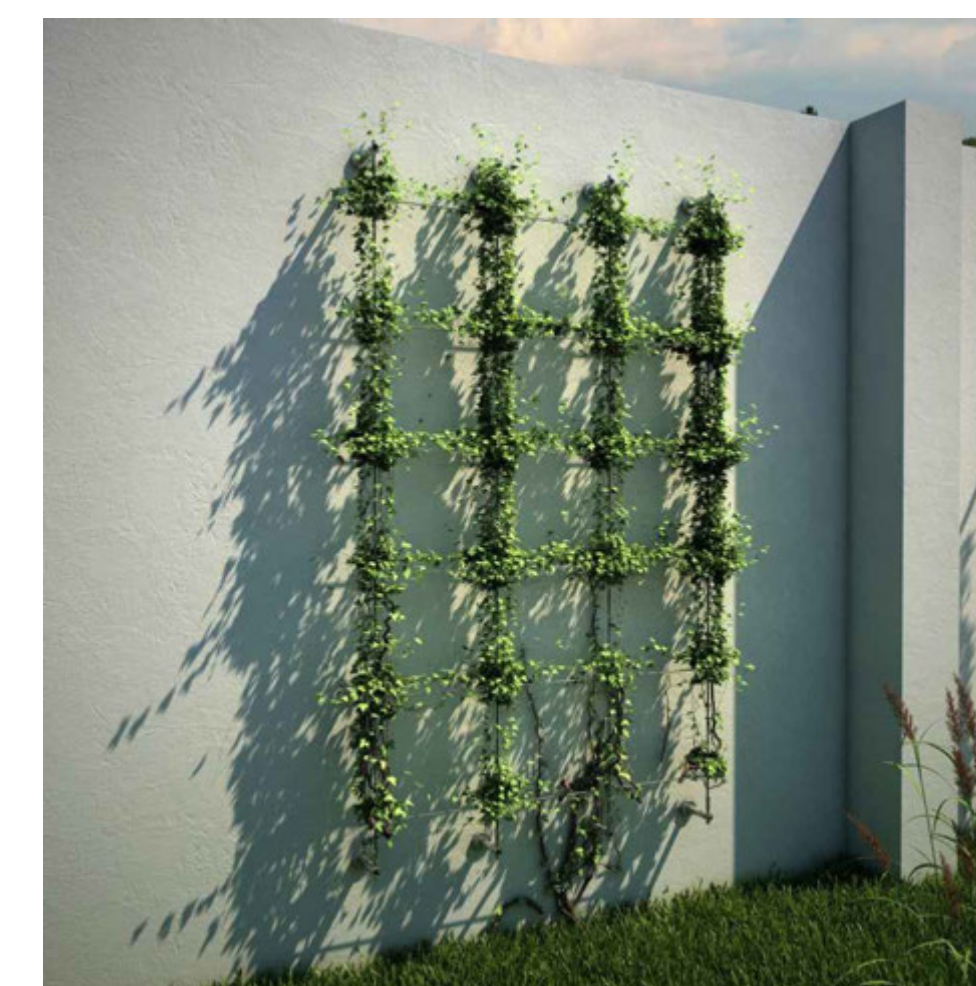
F-1 EXTERIOR FIBER CEMENT PANEL SYSTEM
SMOOTH PANEL WITH EXPOSED FASTENERS
COLOR TO MATCH:
DUNN EDWARDS DE-6316
(COOL WATER)



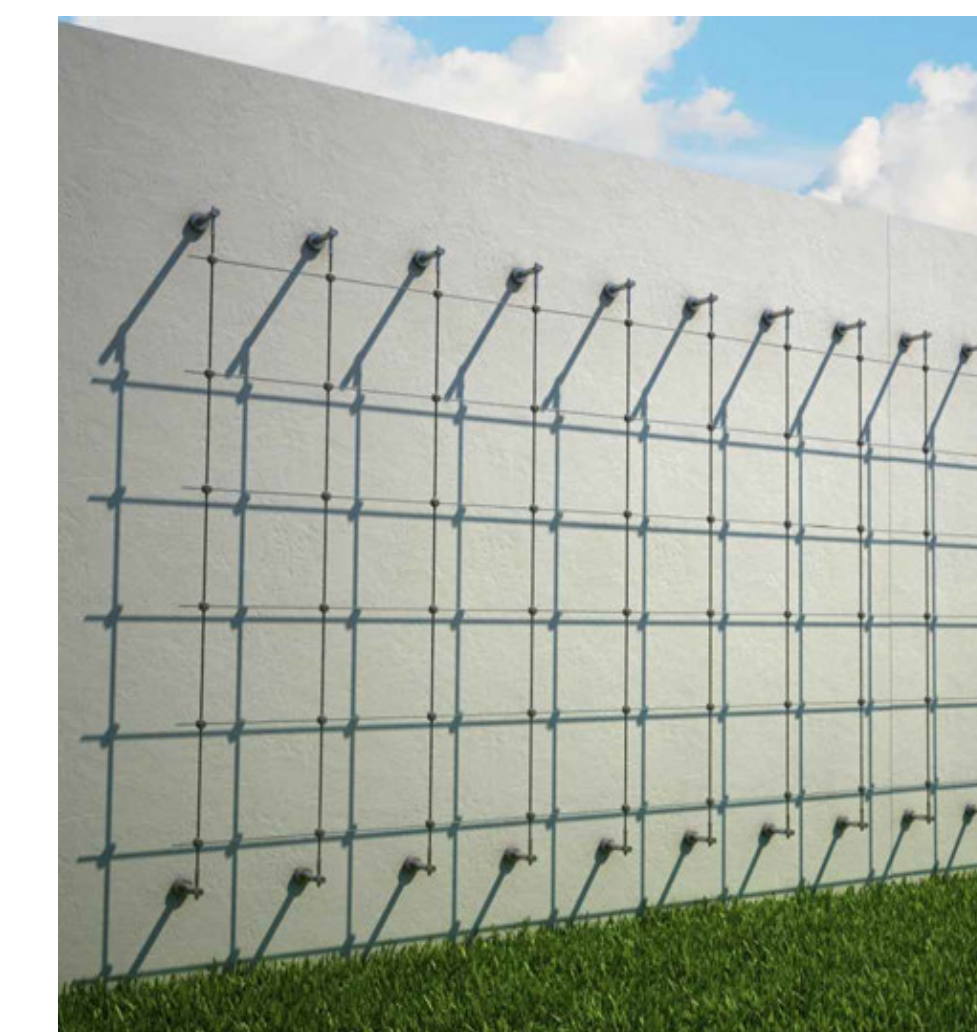
M-1 METAL PANEL SYSTEM
BRIGHT SILVER METALLIC



M-2 METAL PANEL SYSTEM
MEDIUM GRAY METALLIC



L-1 GREENWALL SYSTEM





A SAMPLE OF STOREFRONT AT GUESTROOMS



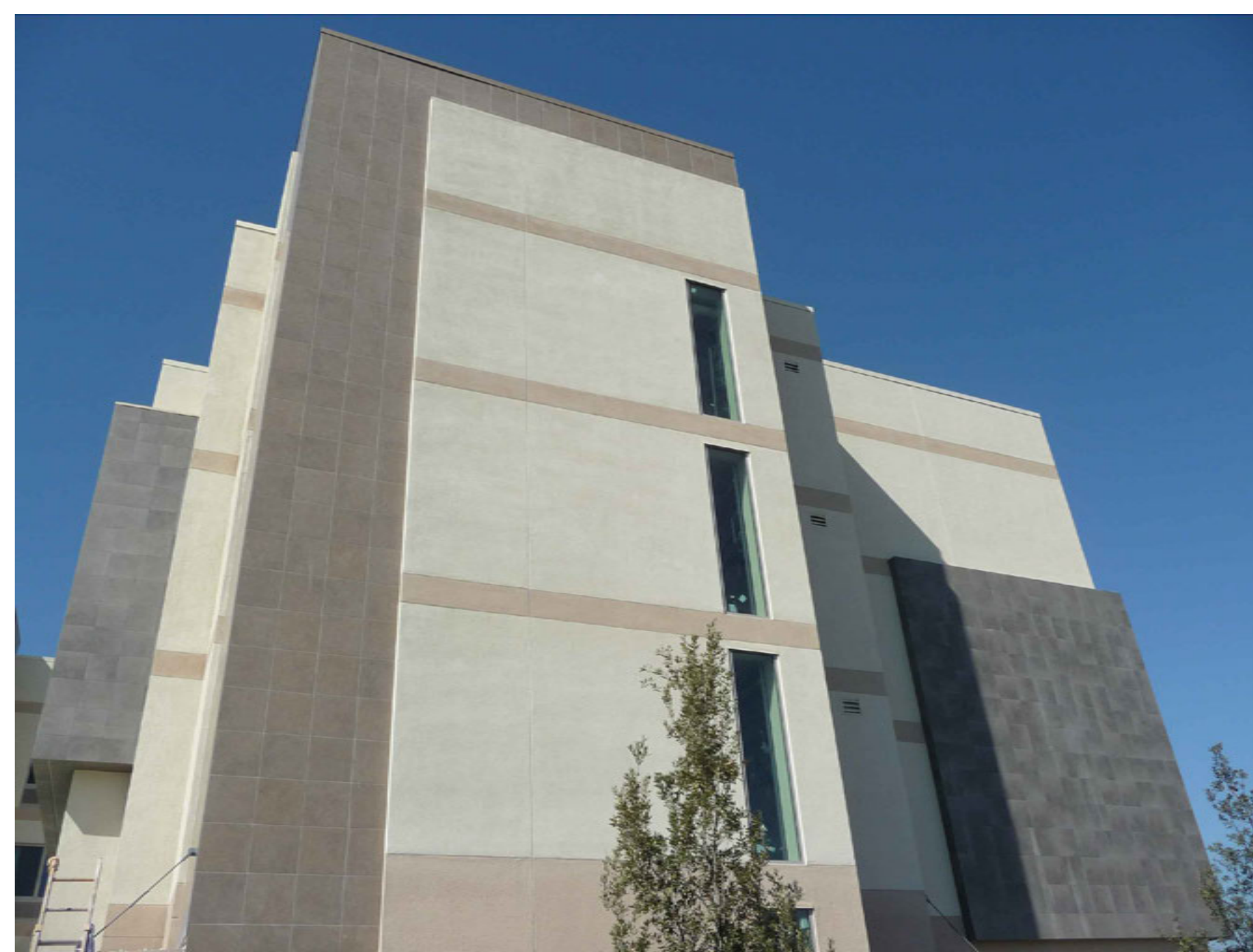
B SAMPLE OF PUNCHED WINDOW AND ARCHITECTURAL GRILL



C SAMPLE OF LIMESTONE



D SAMPLE OF GREENWALL



E PLASTER WITH STONE TILE



F METAL PANEL - SMOOTH



G FIBER CEMENT PANEL SYSTEM



HYATT HOUSE HOTEL AT VALLCO PARK

WOLFE ROAD & INTERSTATE 280
CUPERTINO, CALIFORNIA

CONCEPT IMAGERY

DATE: 10/3/2014
JOB NO.: 1345P





GENE FONG ASSOCIATES
 ARCHITECTURE • PLANNING • INTERIORS
 1150 WESTWOOD BLVD., LOS ANGELES, CA 90024
 310 • 209 • 7520 310 • 209 • 7616 FAX

PROJECT:
HYATT HOUSE,
 CUPERTINO, CA



VALLCO FASHION CENTER
 10380 PERIMETER ROAD
 CUPERTINO, CA

OWNER:
CUPERTINO PROPERTY DEVELOPMENT II, LLC
 19620 STEVENS CREEK BLVD., SUITE 200
 CUPERTINO, CA 95014

SUBMITTALS:

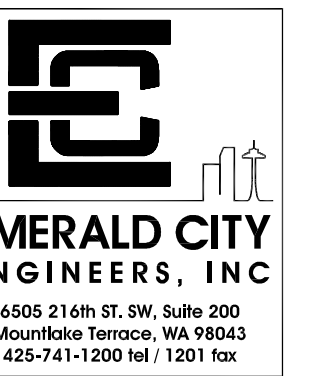
9/12/14	50% DD PROGRESS
9/26/14	100% DD PROGRESS
10/03/14	PLANNING SUBMITTAL

REVISIONS:



10-03-14

CONSULTANT:



SHEET TITLE:

SITE LIGHTING

SCALE: AS NOTED

DATE: 10/03/14

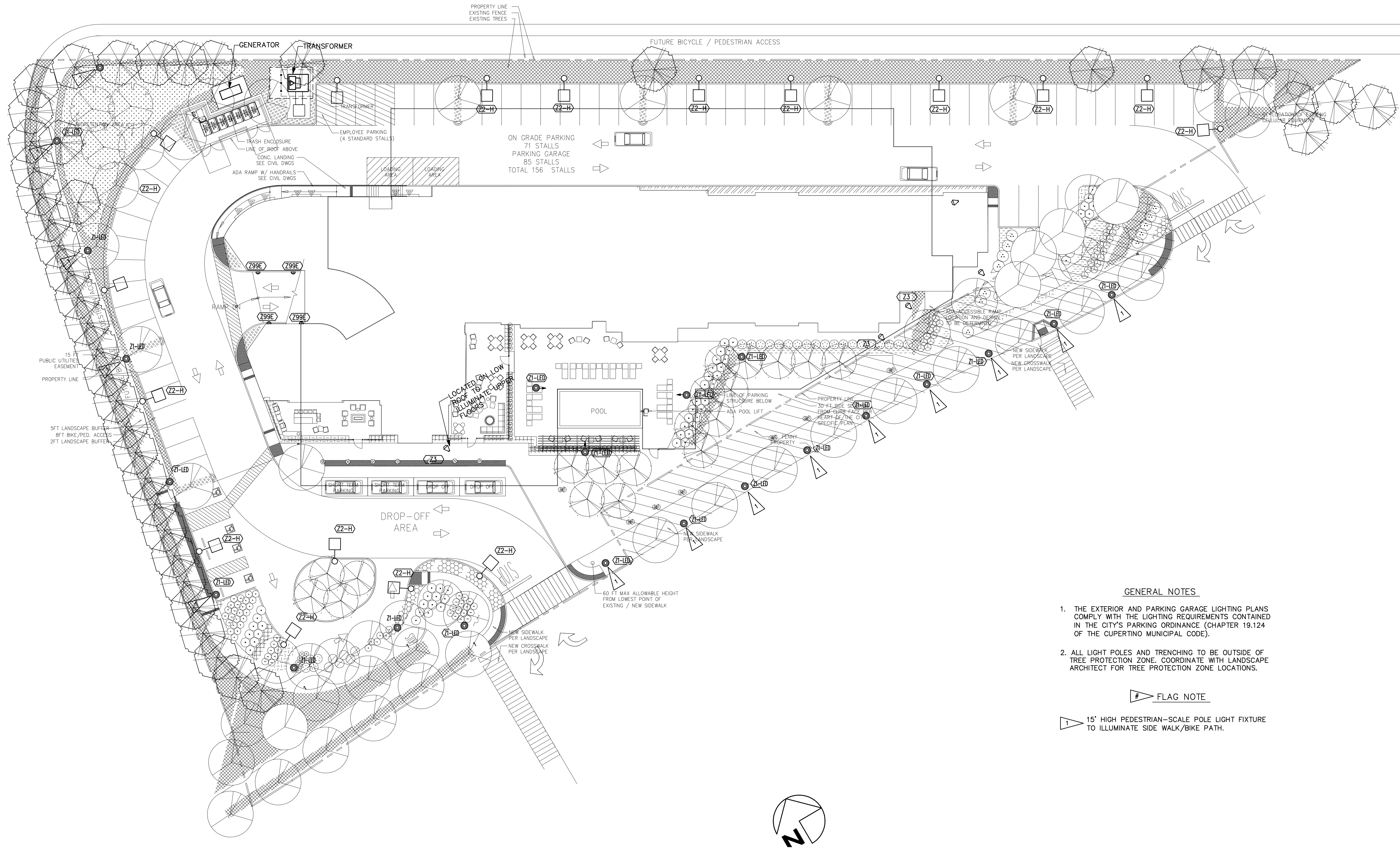
PHASE: DESIGN DEVELOPMENT

JOB NUMBER: 2033-006

SHEET NUMBER:

E-1.0

COPYRIGHT 2014, GENE FONG ASSOCIATES

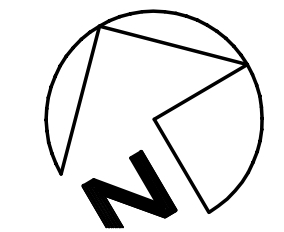


GENERAL NOTES

1. THE EXTERIOR AND PARKING GARAGE LIGHTING PLANS COMPLY WITH THE LIGHTING REQUIREMENTS CONTAINED IN THE CITY'S PARKING ORDINANCE (CHAPTER 19.124 OF THE CUPERTINO MUNICIPAL CODE).
2. ALL LIGHT POLES AND TRENCHING TO BE OUTSIDE OF TREE PROTECTION ZONE. COORDINATE WITH LANDSCAPE ARCHITECT FOR TREE PROTECTION ZONE LOCATIONS.

FLAG NOTE

- 1 15' HIGH PEDESTRIAN-SCALE POLE LIGHT FIXTURE TO ILLUMINATE SIDE WALK/BIKE PATH.



SITE LIGHTING

SCALE: 1" = 20'



GENEFONG ASSOCIATES
ARCHITECTURE • PLANNING • INTERIORS
1150 WESTWOOD BLVD., LOS ANGELES, CA 90024
310 • 209 • 7520 310 • 209 • 7616 FAX

PROJECT:
HYATT HOUSE, CUPERTINO, CA



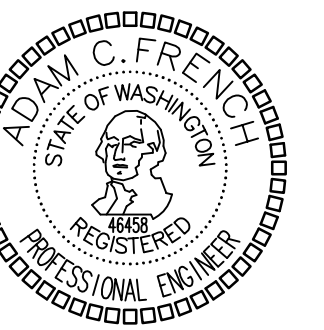
VALLCO FASHION CENTER
10380 PERIMETER ROAD
CUPERTINO, CA

OWNER:
CUPERTINO PROPERTY DEVELOPMENT II, LLC
19620 STEVENS CREEK BLVD., SUITE 200
CUPERTINO, CA 95014

SUBMITTALS:

9/12/14	50% DD PROGRESS
9/26/14	100% DD PROGRESS
10/03/14	PLANNING SUBMITTAL

REVISIONS:



10-03-14

CONSULTANT:



SHEET TITLE:

SITE
PHOTOMETRICS

SCALE:
AS NOTED

DATE:
10/03/14

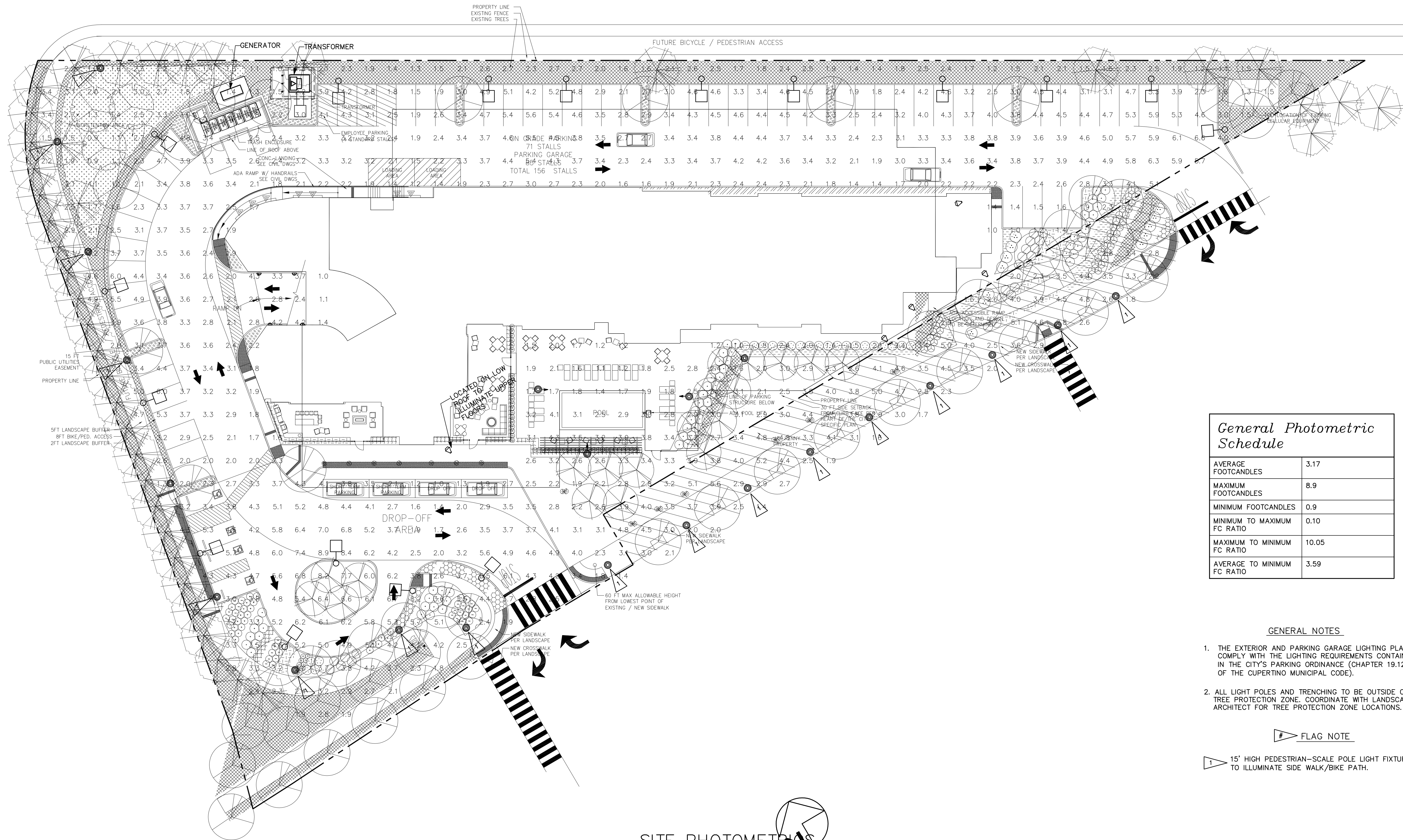
PHASE:
DESIGN DEVELOPMENT

JOB NUMBER:
2033-006

SHEET NUMBER:

E-1.1

COPYRIGHT 2014, GENE FONG ASSOCIATES



General Photometric Schedule

AVERAGE FOOTCANDLES	3.17
MAXIMUM FOOTCANDLES	8.9
MINIMUM FOOTCANDLES	0.9
MINIMUM TO MAXIMUM FC RATIO	0.10
MAXIMUM TO MINIMUM FC RATIO	10.05
AVERAGE TO MINIMUM FC RATIO	3.59

GENERAL NOTES

1. THE EXTERIOR AND PARKING GARAGE LIGHTING PLANS COMPLY WITH THE LIGHTING REQUIREMENTS CONTAINED IN THE CITY'S PARKING ORDINANCE (CHAPTER 19.124 OF THE CUPERTINO MUNICIPAL CODE).
2. ALL LIGHT POLES AND TRENCHING TO BE OUTSIDE OF TREE PROTECTION ZONE. COORDINATE WITH LANDSCAPE ARCHITECT FOR TREE PROTECTION ZONE LOCATIONS.

FLAG NOTE

- 15' HIGH PEDESTRIAN-SCALE POLE LIGHT FIXTURE TO ILLUMINATE SIDE WALK/BIKE PATH.

SITE PHOTOMETRICS
SCALE: 1" = 20'



GENEFONG ASSOCIATES
 ARCHITECTURE • PLANNING • INTERIORS
 1130 WESTWOOD BLVD., LOS ANGELES, CA 90024
 310 • 209 • 7520 310 • 209 • 7616 FAX

PROJECT:

HYATT HOUSE,
 CUPERTINO, CA



VALLCO FASHION CENTER
 10380 PERIMETER ROAD
 CUPERTINO, CA

OWNER:

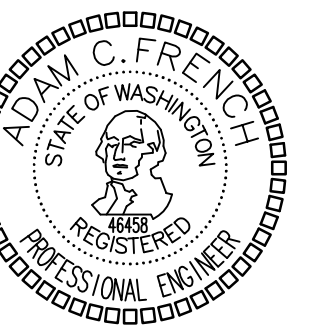
CUPERTINO
 PROPERTY
 DEVELOPMENT II,
 LLC

19620 STEVENS CREEK BLVD.,
 SUITE 200
 CUPERTINO, CA 95014

SUBMITTALS:

9/12/14	50% DD PROGRESS
9/26/14	100% DD PROGRESS
10/03/14	PLANNING SUBMITTAL

REVISIONS:



10-03-14

CONSULTANT:



EMERALD CITY
 ENGINEERS, INC.
 4605 214th St. SW, Suite 200
 Mountlake Terrace, WA 98043
 425-741-1200 ext. 1203 fax

SHEET TITLE:

PARKING GARAGE
 PHOTOMETRIC

SCALE:
 AS NOTED

DATE:
 10/03/14

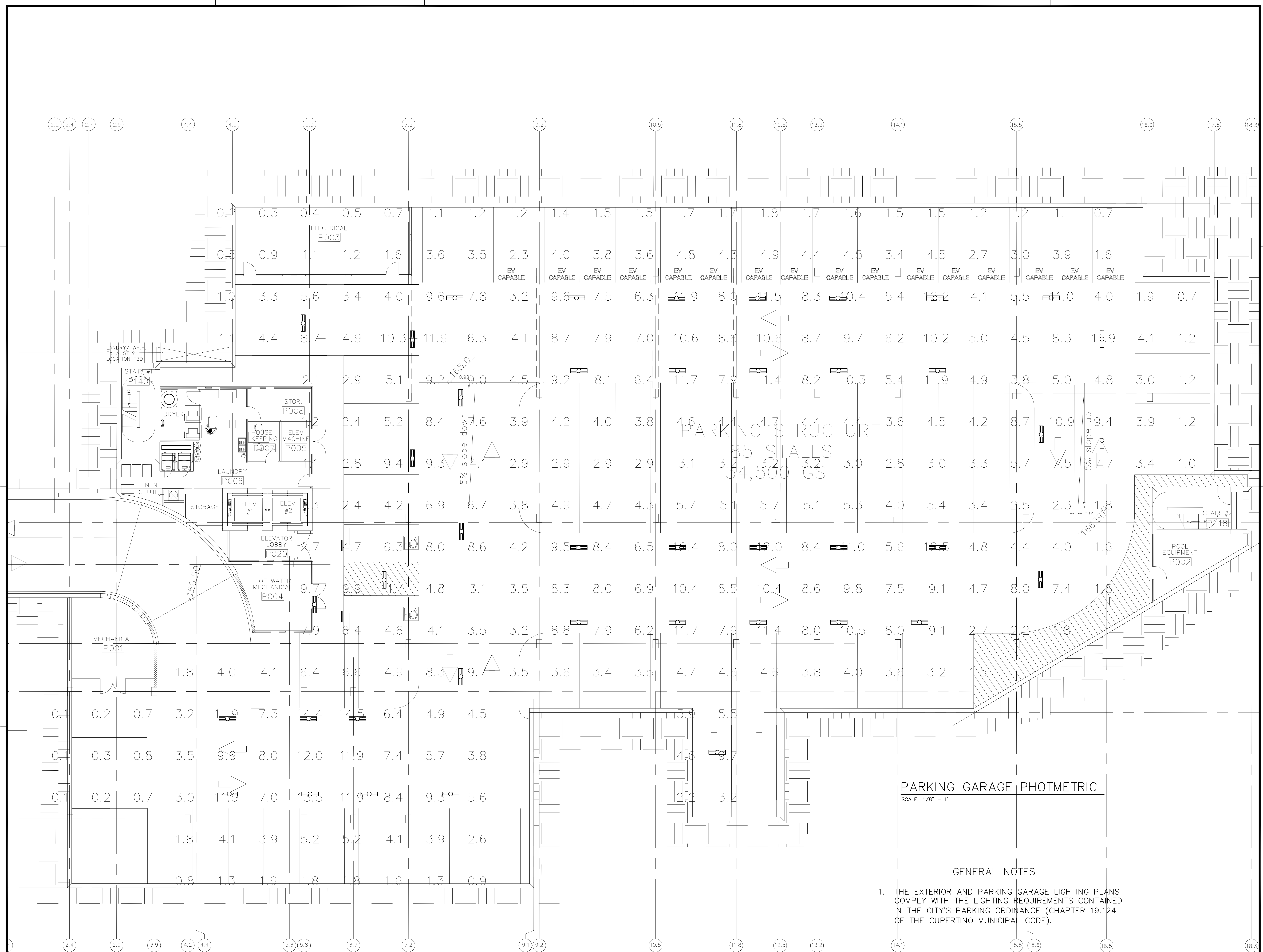
PHASE:
 DESIGN DEVELOPMENT

JOB NUMBER:
 2033-006

SHEET NUMBER:

E-1.2

COPYRIGHT 2014, GENE FONG ASSOCIATES



PARKING GARAGE PHOTMETRIC
 SCALE: 1/8" = 1'

GENERAL NOTES

1. THE EXTERIOR AND PARKING GARAGE LIGHTING PLANS COMPLY WITH THE LIGHTING REQUIREMENTS CONTAINED IN THE CITY'S PARKING ORDINANCE (CHAPTER 19.124 OF THE CUPERTINO MUNICIPAL CODE).