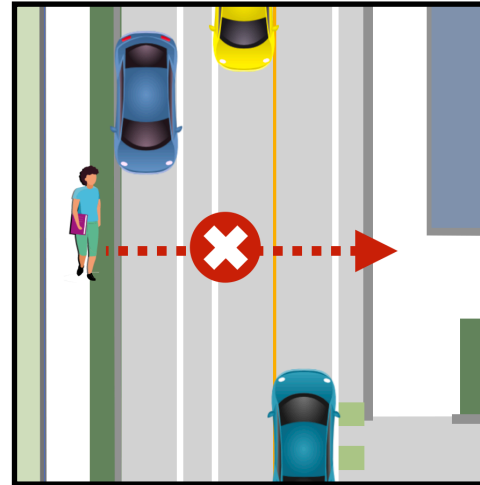
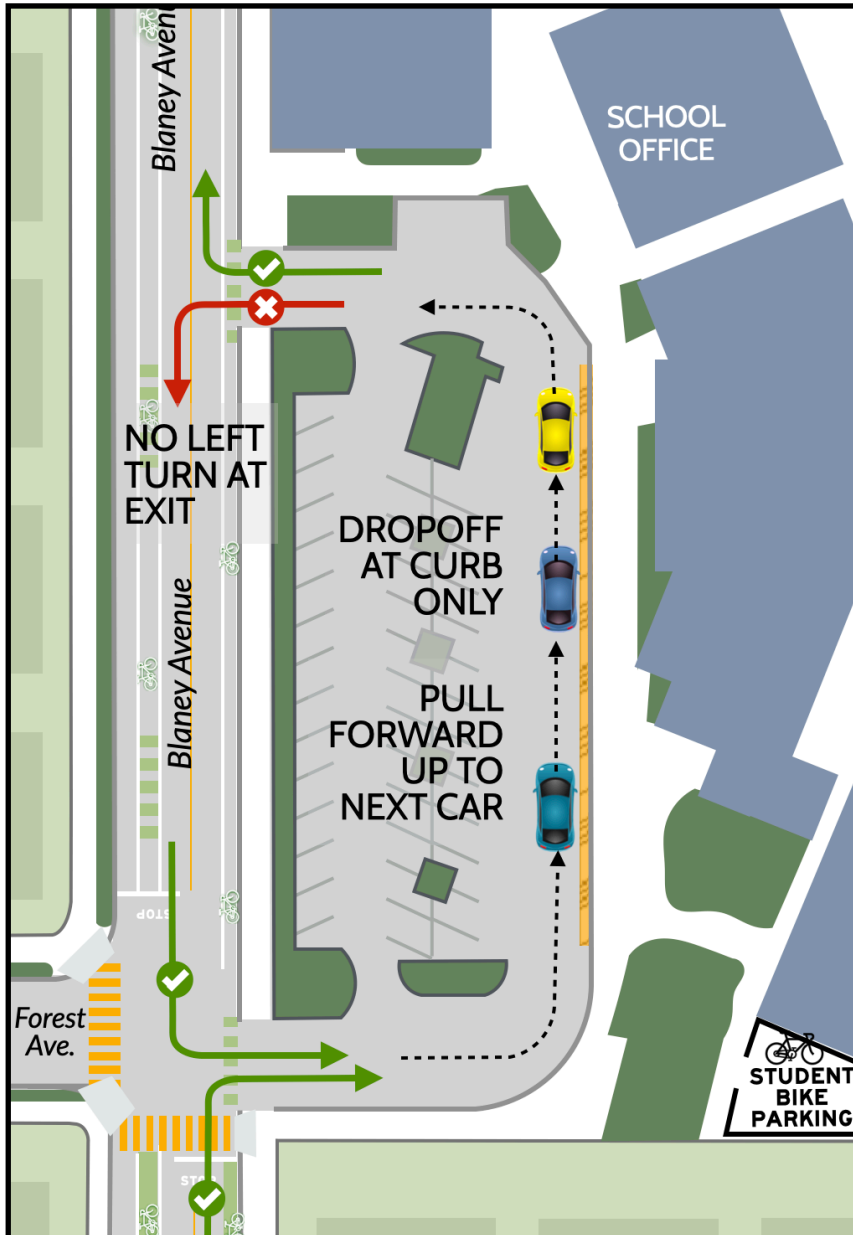


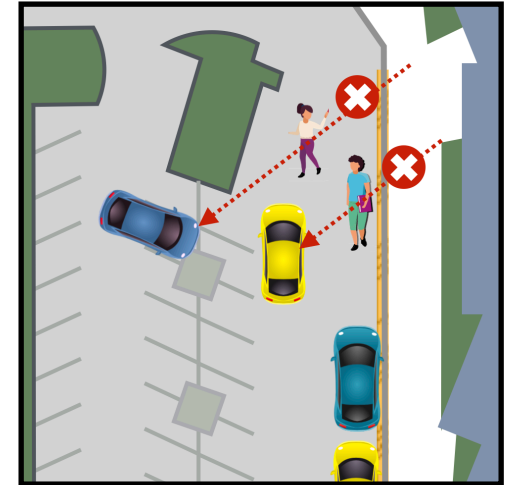


COLLINS ELEMENTARY DROP OFF & PICKUP RULES

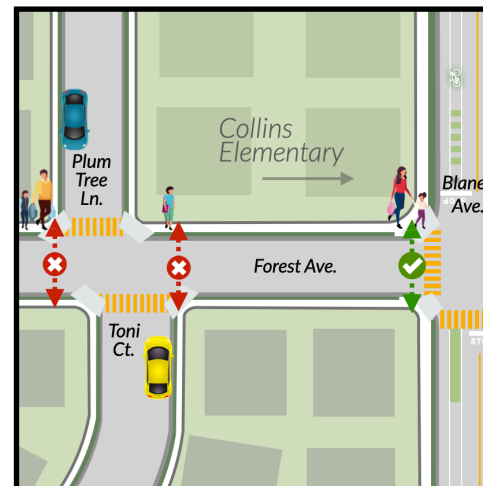
Blaney Avenue Dropoff



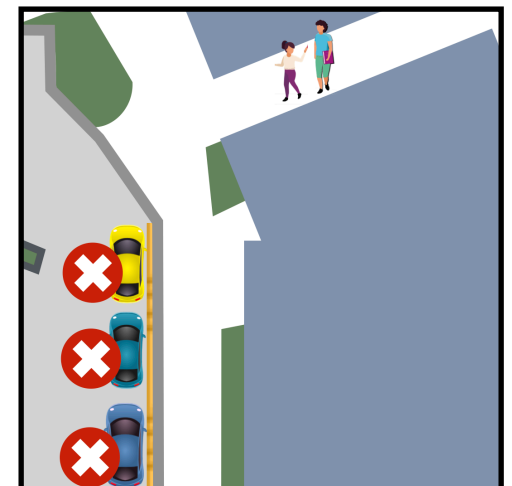
Do not drop off your child on Blaney and let them cross mid-block. Your child should always use the crosswalk.



Do not encourage your child to cross the drop off lane or parking lot to reach your car for pickup. Use the curb lane.



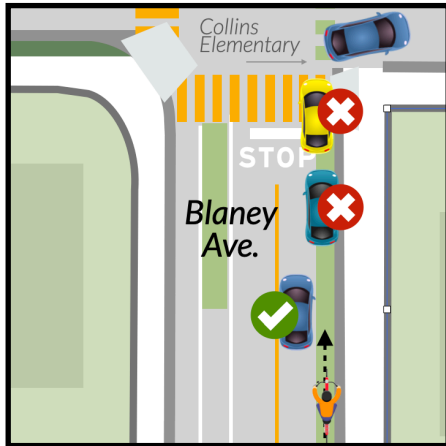
If parking and walking to or from Collins, only cross Forest Ave. at the Blaney Ave. crosswalk, not at other streets.



There is **NO PARKING** at the curb of the drop off lot until your child is dismissed. You must circle the block and return.

HOW TO DROP OFF AND PICK UP AT COLLINS

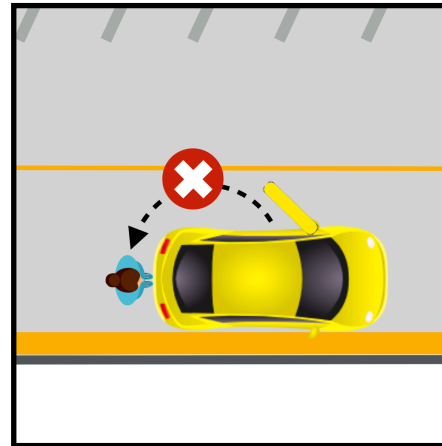
Do not block crosswalk or bike lane when turning into lot. Idling in the bike lane is illegal.



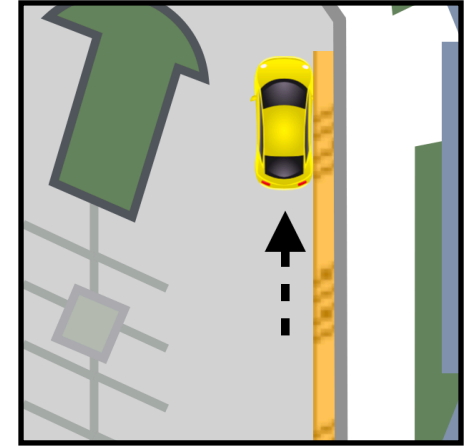
STOP, then watch for cyclists and walkers before entering Collins dropoff lane.



Be ready to drop off. Drivers must not get out of the car or have backpacks in the trunk.



Pull all the way to end of the dropoff zone **before** letting your child out.



Biking Rules

- You must wear a buckled helmet at all times.
- Walk your bike at all times on campus and in school parking lots.
- You must lock up your bike in the designated bike parking areas.

Failure to follow the rules may result in disciplinary action.



Scooters & Skateboards

- You must wear a buckled helmet at all times.
- You may not ride any of these on campus or in school parking lots.
- Storage at school is the responsibility of the student.

Portal Ave.

Students can be dropped off along Portal Ave and easily walk into Collins via the back gate. It's great for cyclists, too!

YOU CAN:



- Avoid the traffic jams near school
- Increase your child's school success
- Save gas, money, and be more green

HAVE YOUR CHILD WALK, BIKE, OR SCOOTER TO SCHOOL!

