



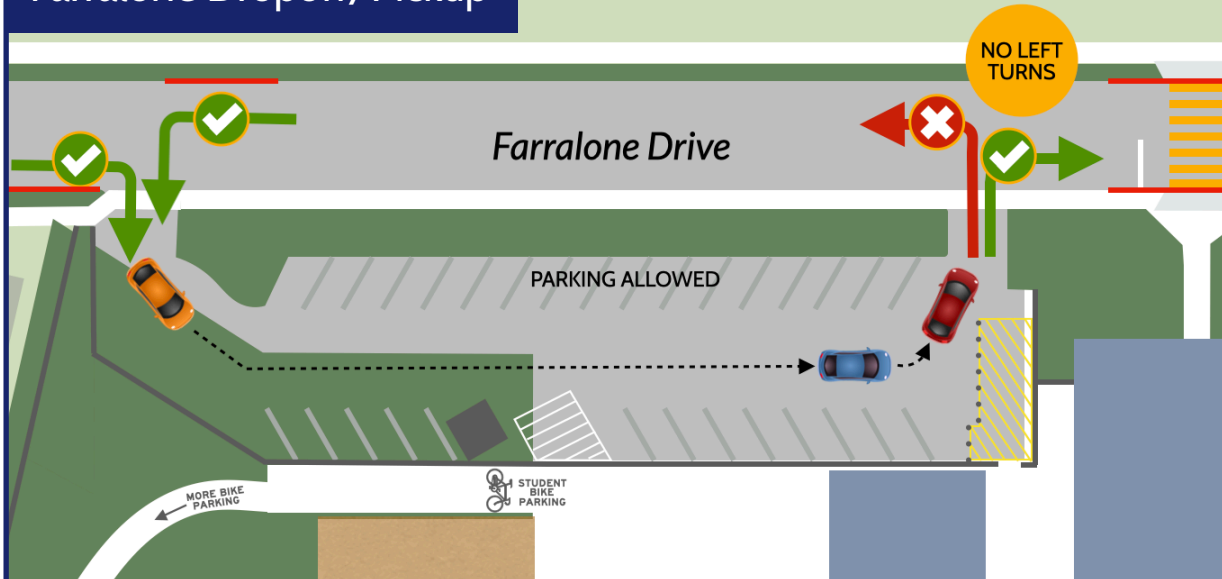
EATON ELEMENTARY DROPOFF & PICKUP RULES



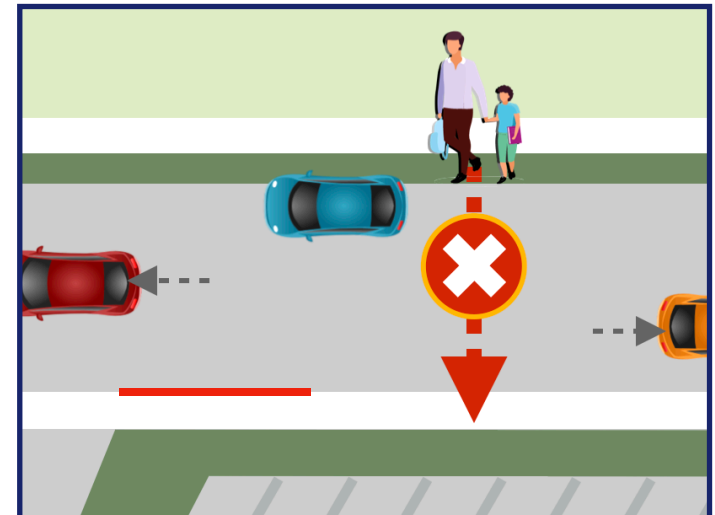
Suisun Dropoff/Pickup



Farralone Dropoff/Pickup

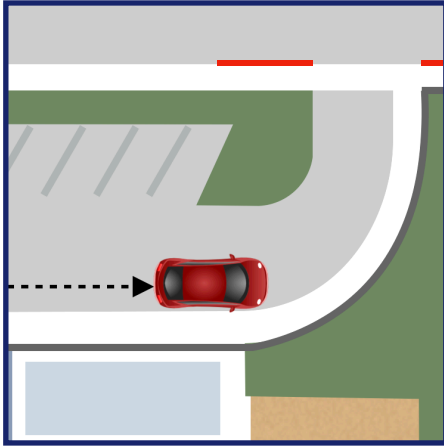


ONLY CROSS AT CROSSWALKS. Do not park on the other side of Suisun Drive and then cross mid-block to Eaton Elementary.

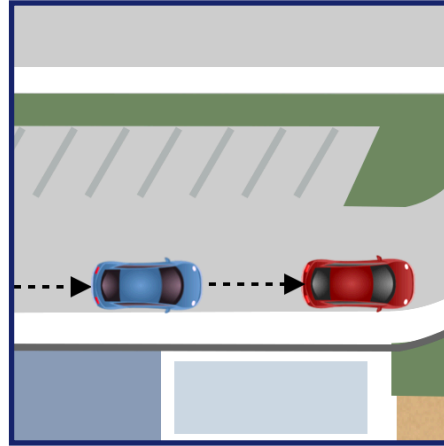


HOW TO DROP OFF AT EATON

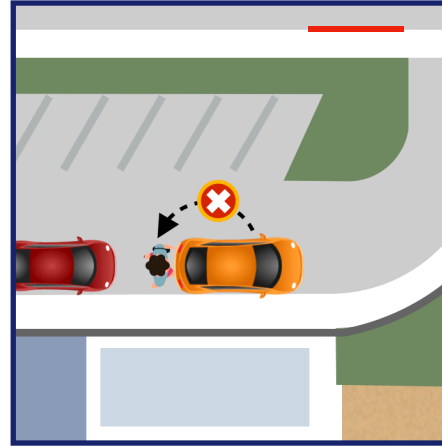
Pull all the way to end of the dropoff zone **before** letting your child out.



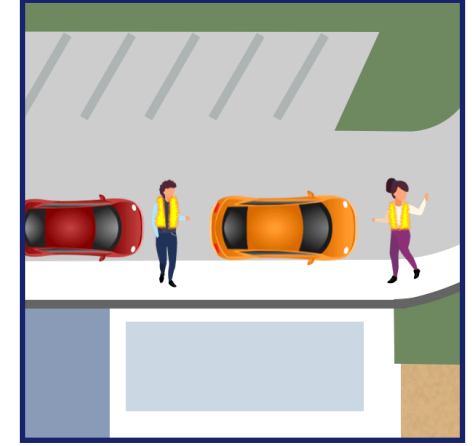
Move your car forward when the next car ahead of you moves forward.



Be ready to drop off. *Drivers* must not get out of the car or have backpacks in the trunk.



The Student Traffic Team will open the car door and help your student out of the car.



WATCH FOR STUDENTS ESPECIALLY IN THESE AREAS

STOP, then watch for students at entrances and exits to all dropoff lanes.



STOP and wait for parents and students in the Farralone crosswalk.



Eaton Biking Rules: **Students AND parents** must walk bikes on campus and in all parking lots • Always wear a helmet!

YOU CAN:

- Avoid the traffic jams near school
- Increase your child's school success
- Save gas, money, and be more green



HAVE YOUR CHILD WALK, BIKE, OR SCOOTER TO SCHOOL!

