

### Existing Conditions

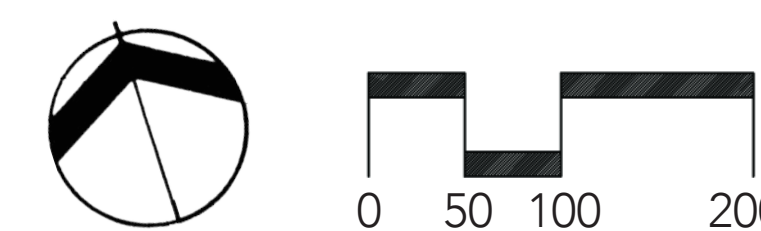
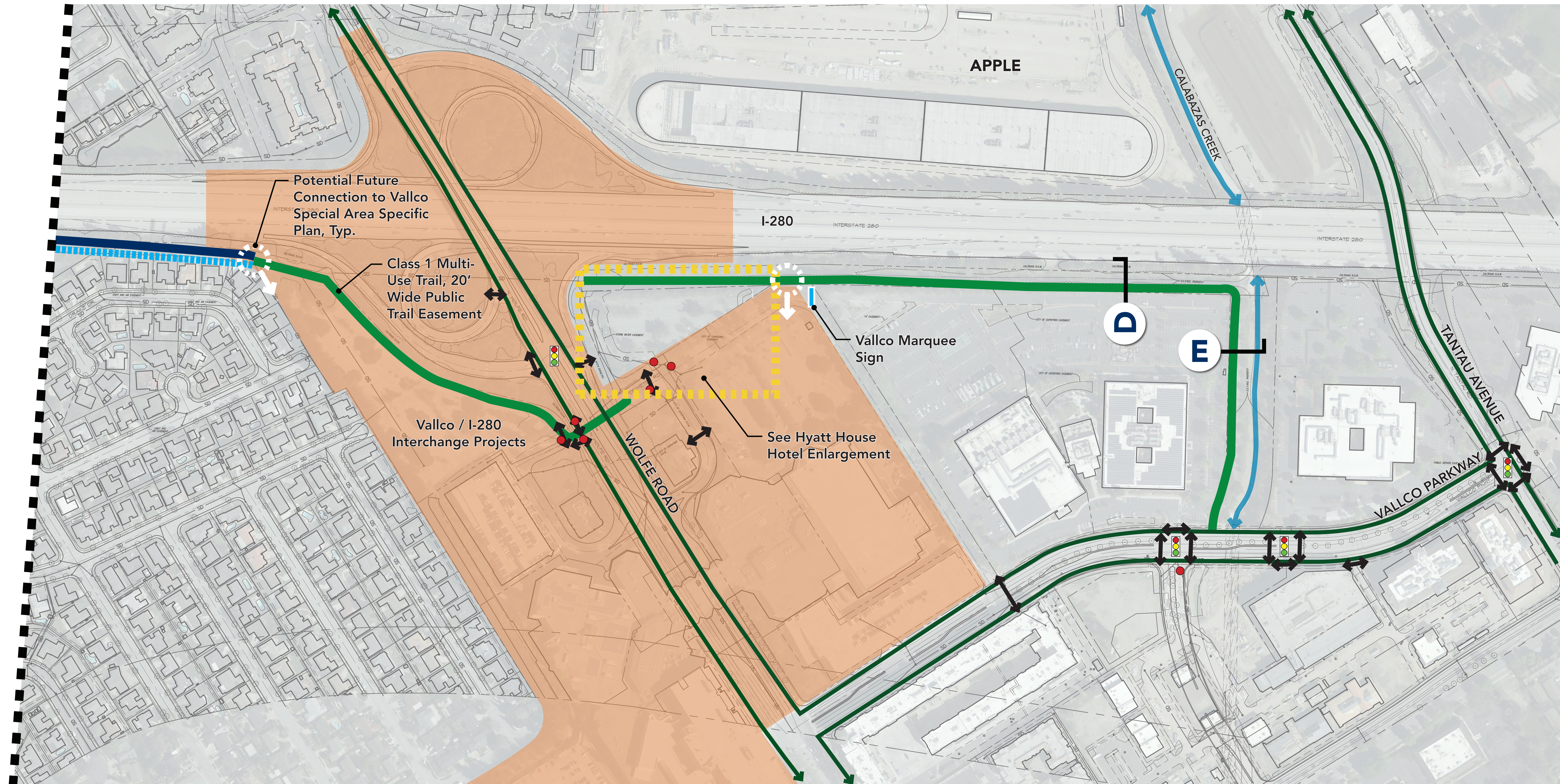
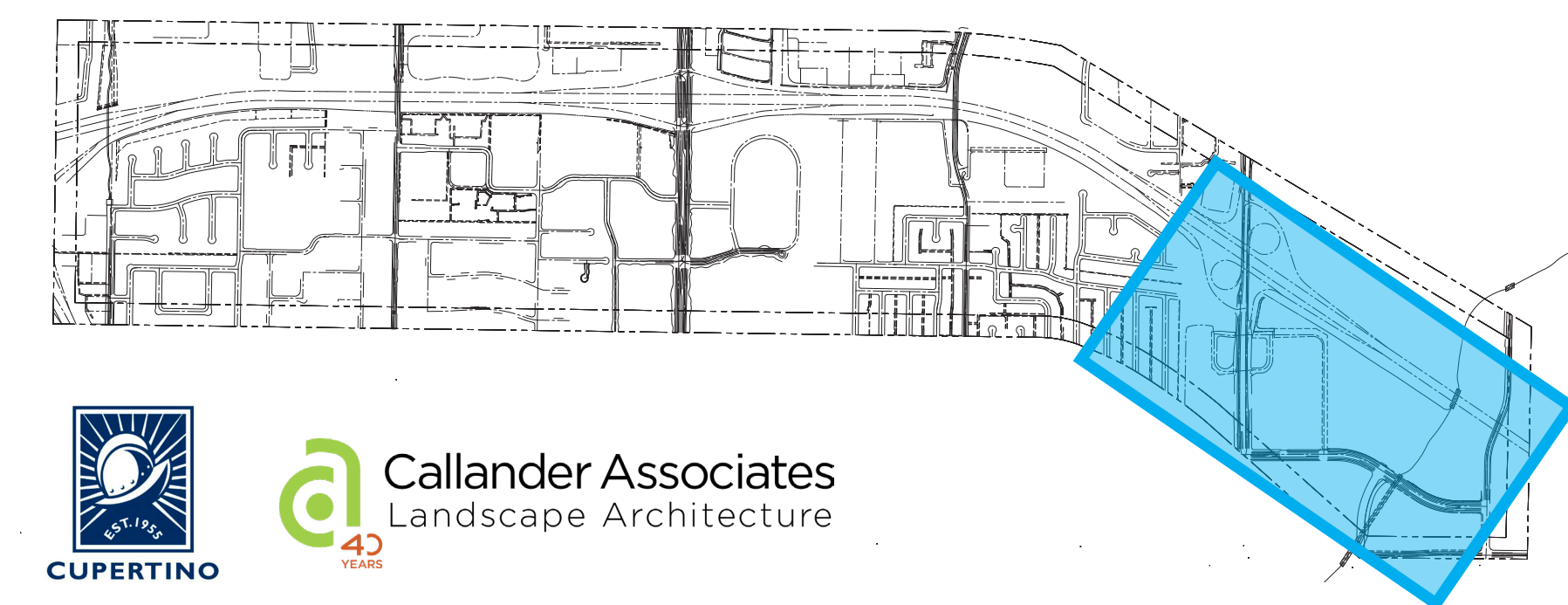
- Trail Connection Point / Enlargement Area
- Gateway
- City Limits

### Existing Connections

- Class 1 Bike Path
- Bike Lanes on Street
- Bike Route
- Crosswalk
- Stop Sign
- Traffic Signal

### Trail Types

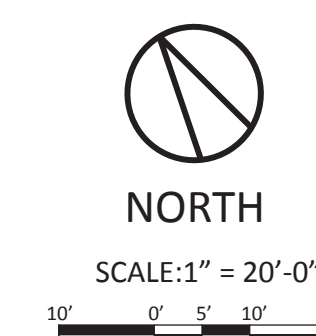
- Alternative #1**  
 Pedestrian Trail, less than 16'-0"
- Alternative #2**  
 Covered Ditch, Class 1 Multi-Use Trail, 16'-0" minimum
- Standard**  
 Class 1 Multi-Use Trail, 16'-0" minimum





**LEGEND**

- ① DROP-OFF / ENTRY PLAZA
- ② PUBLIC OPEN SPACE
- ③ OUTDOOR DINING
- ④ POOL
- ⑤ EXISTING TREE
- ⑥ SHADE TREE
- ⑦ FLOWERING / SEASONAL TREE IN GRATE
- ⑧ UPRIGHT EVERGREEN TREE
- ⑨ STREET TREE IN GRATE
- ⑩ PUBLIC ART
- ⑪ DECORATIVE PAVING BANDS (GRAVEL OR CONCRETE)
- ⑫ PEDESTRIAN CROSSWALK
- ⑬ TRASH/RECYCLING BIN
- ⑭ STORMWATER PLANTING
- ⑮ ADA ACCESSIBLE RAMP
- ⑯ SCREENED TRANSFORMER

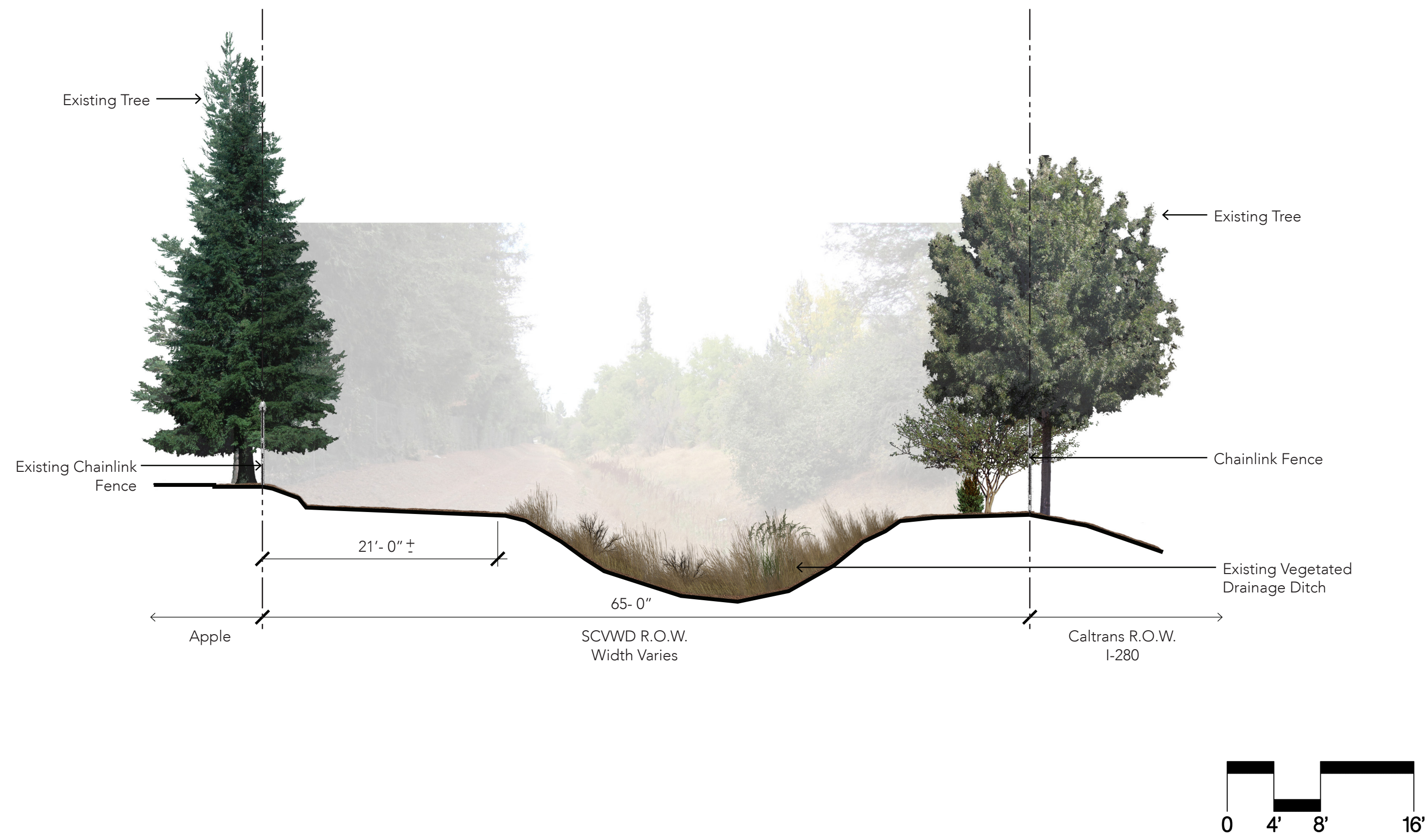


Concept Plan prepared by Bruce Jett Associates, 8/13/14

## Hyatt House Hotel Bicycle / Pedestrian Path Connection

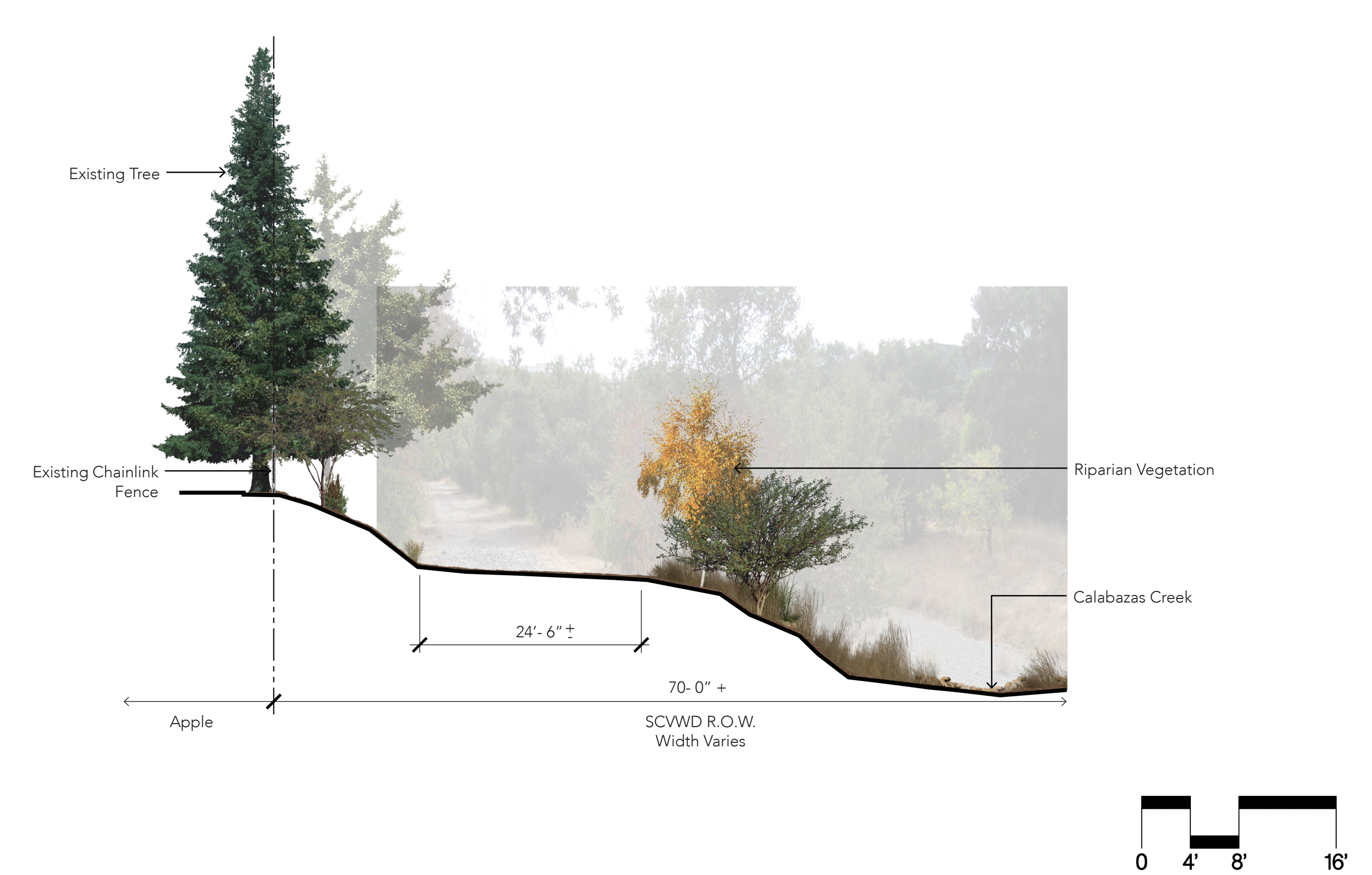
## D SECTION D

Existing

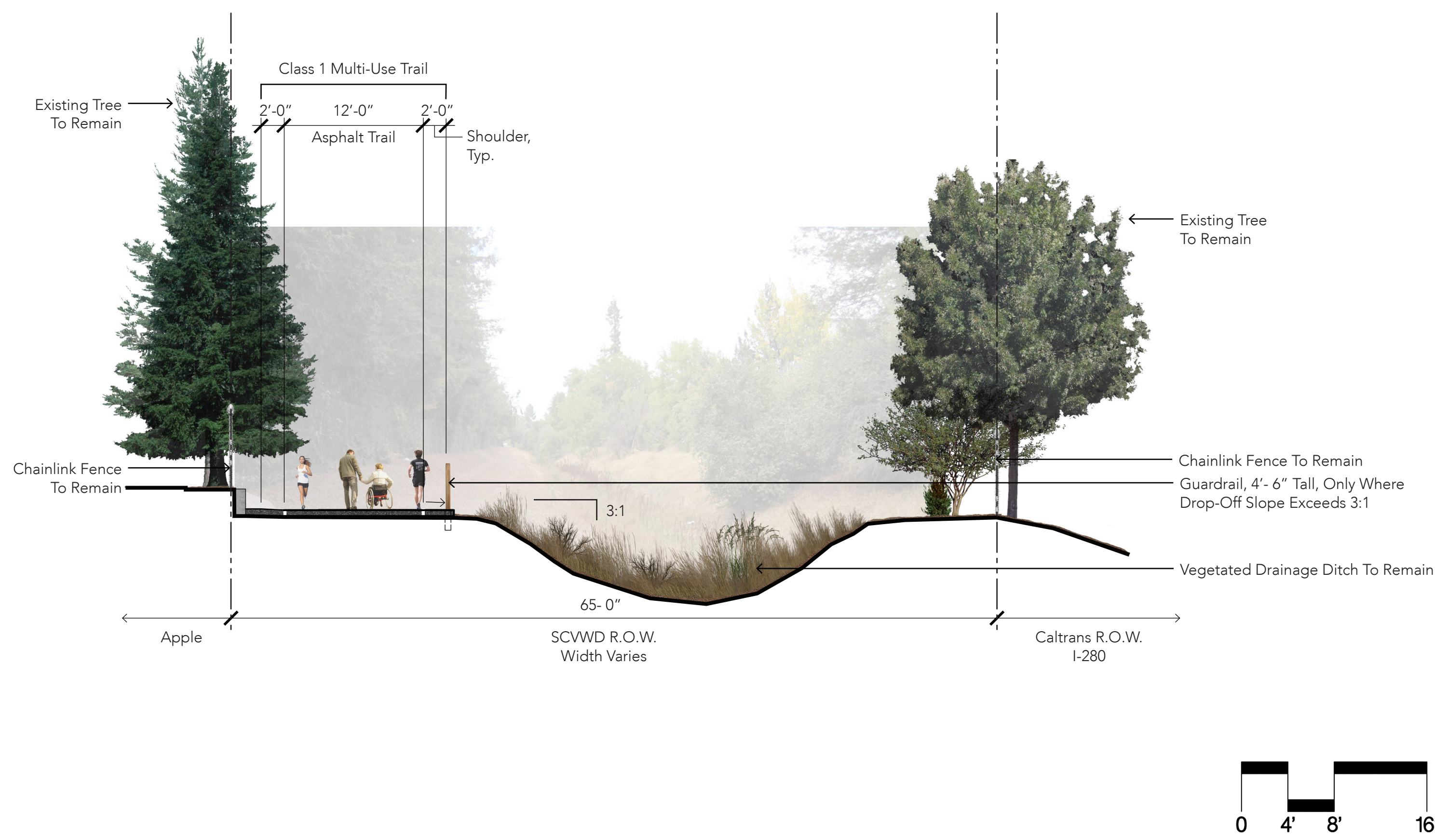


## E SECTION E

Existing



Proposed



Proposed

